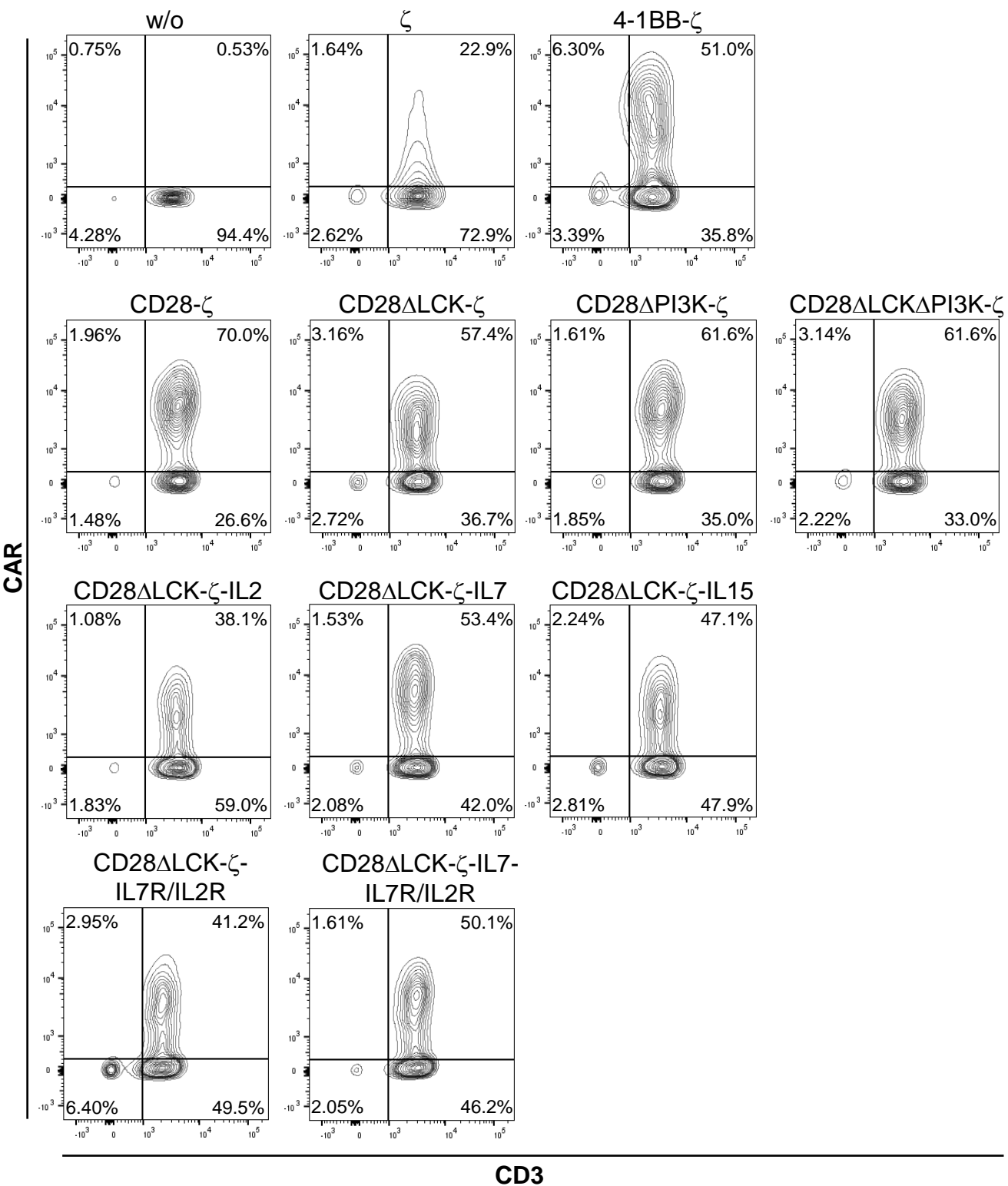


YMTHE, Volume 26

Supplemental Information

CD28- ζ CAR T Cells Resist TGF- β Repression through IL-2 Signaling, Which Can Be Mimicked by an Engineered IL-7 Autocrine Loop

Viktória Golumba-Nagy, Johannes Kuehle, Andreas A. Hombach, and Hinrich Abken



Supplement Figure 1 Different CAR expression on human T cell surface

CAR expression on human T cell surface was measured after the transduction by flow cytometry. For CAR detection PE conjugated Goat F(ab')₂ anti-human IgG antibody, for CD3 labeling FITC conjugated anti-CD3 antibody were used. Percentage value in the top right area represents the CD3⁺CAR⁺ T cell population.