

690 **SUPPLEMENTARY MATERIAL**

691 **Figure S1. The AB<sub>5</sub> structure of cholera toxin**

692 A ribbon diagram derived from the crystal structure of CT (PDB 1S5F) is presented, with the 21  
693 kDa A1 subunit in dark blue, the 5 kDa A2 subunit in light blue, and the 55 kDa B  
694 homopentamer in grey. The disulfide bond connecting CTA1 and CTA2 is highlighted in yellow.  
695

696 **Figure S2. Reduction of the CT holotoxin**

697 CT incubated in the absence (lane 1) or presence (lane 2) of 1 mM GSH for 5 min at 30°C was  
698 resolved by non-reducing SDS-PAGE and visualized with Coomassie stain. CT reduced with β-  
699 mercaptoethanol in the sample buffer was loaded as a reference in lane 3.

700

701 **Figure S3. Heat denaturation of PDI**

702 Thermal unfolding of PDI was studied by CD spectroscopy using a 1.0 mm path-length quartz  
703 cuvette. The protein (800 nM) was dissolved in an aqueous pH 7.0 buffer containing 20 mM  
704 sodium borate, 100 mM NaCl, and 1 mM GSH. The initial spectrum was measured at 30°C  
705 (dark blue). The sample was then heated to 90°C, incubated for 5 min, and a spectrum was  
706 recorded at that temperature (red). The temperature was then decreased to 23°C, and a last  
707 spectrum was recorded (light blue). All spectra have been corrected by subtraction of the buffer  
708 spectrum.

709

710 **Figure S4. Glycerol does not inhibit the enzymatic activity of trypsin**

711 Alpha-casein was placed in 20 mM sodium phosphate buffer (pH 7.4) containing 1 mM GSH.  
712 Protein samples (2 μg) were incubated for 1 h at 4°C in the absence or presence of trypsin before

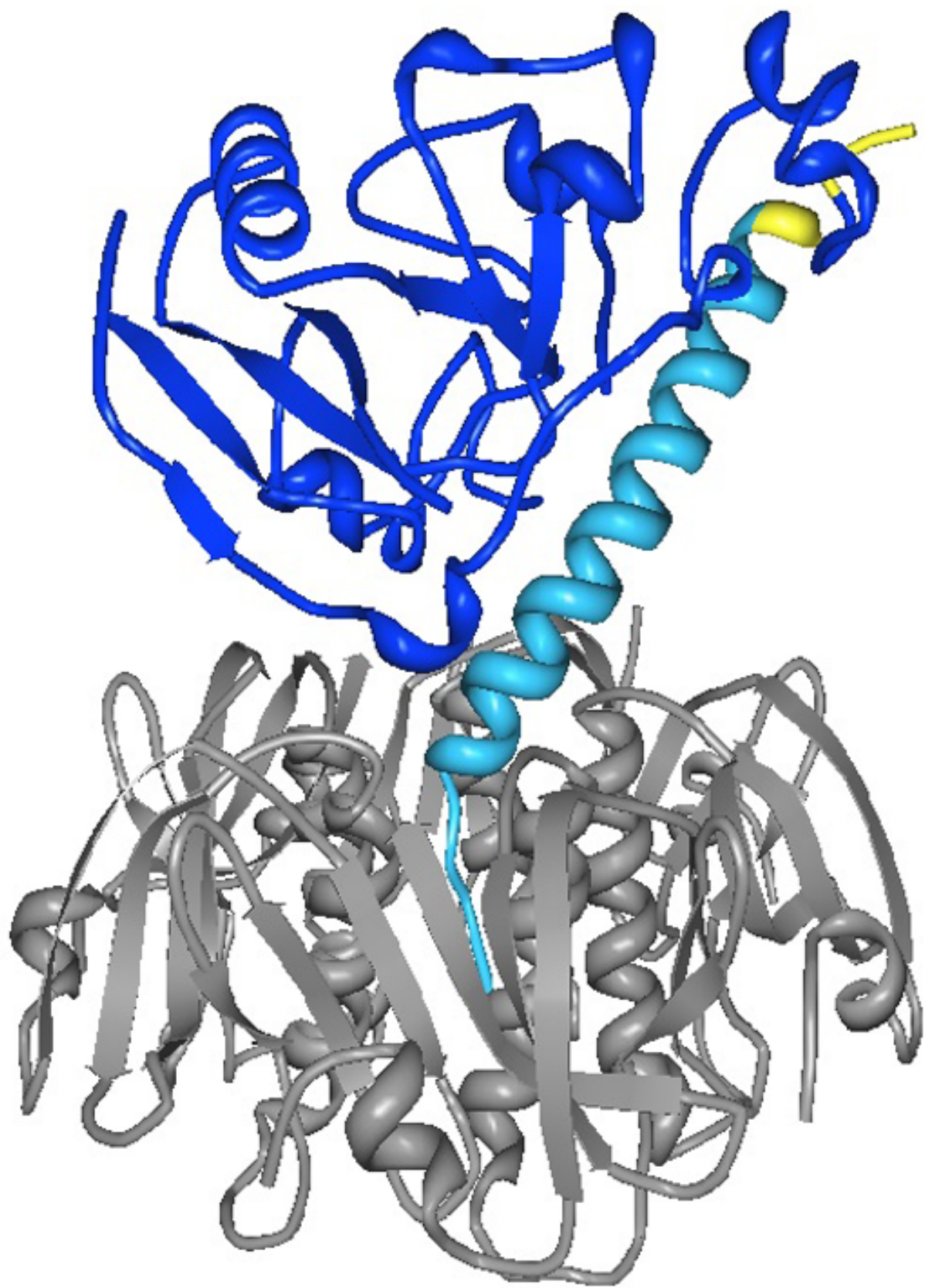
713 visualization with SDS-PAGE and Coomassie stain. Samples exposed to trypsin were either  
714 untreated or co-incubated with 10% glycerol as indicated.

715

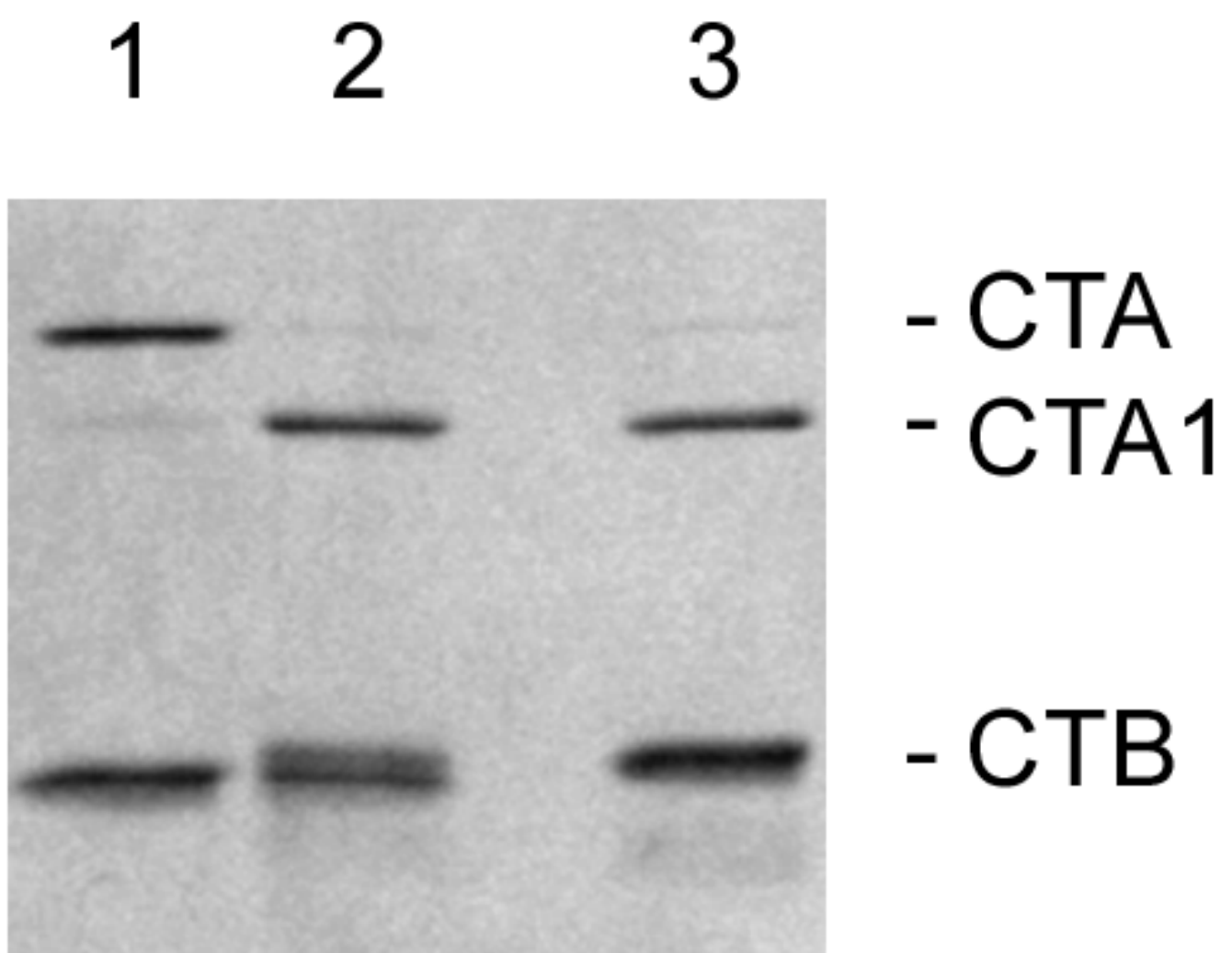
716 **Figure S5. Location of cut sites for thermolysin and trypsin in CTA1**

717 Recognition sites for thermolysin and trypsin along the length of the CTA1 polypeptide were  
718 identified with the ExPASy Peptide Cutter tool.

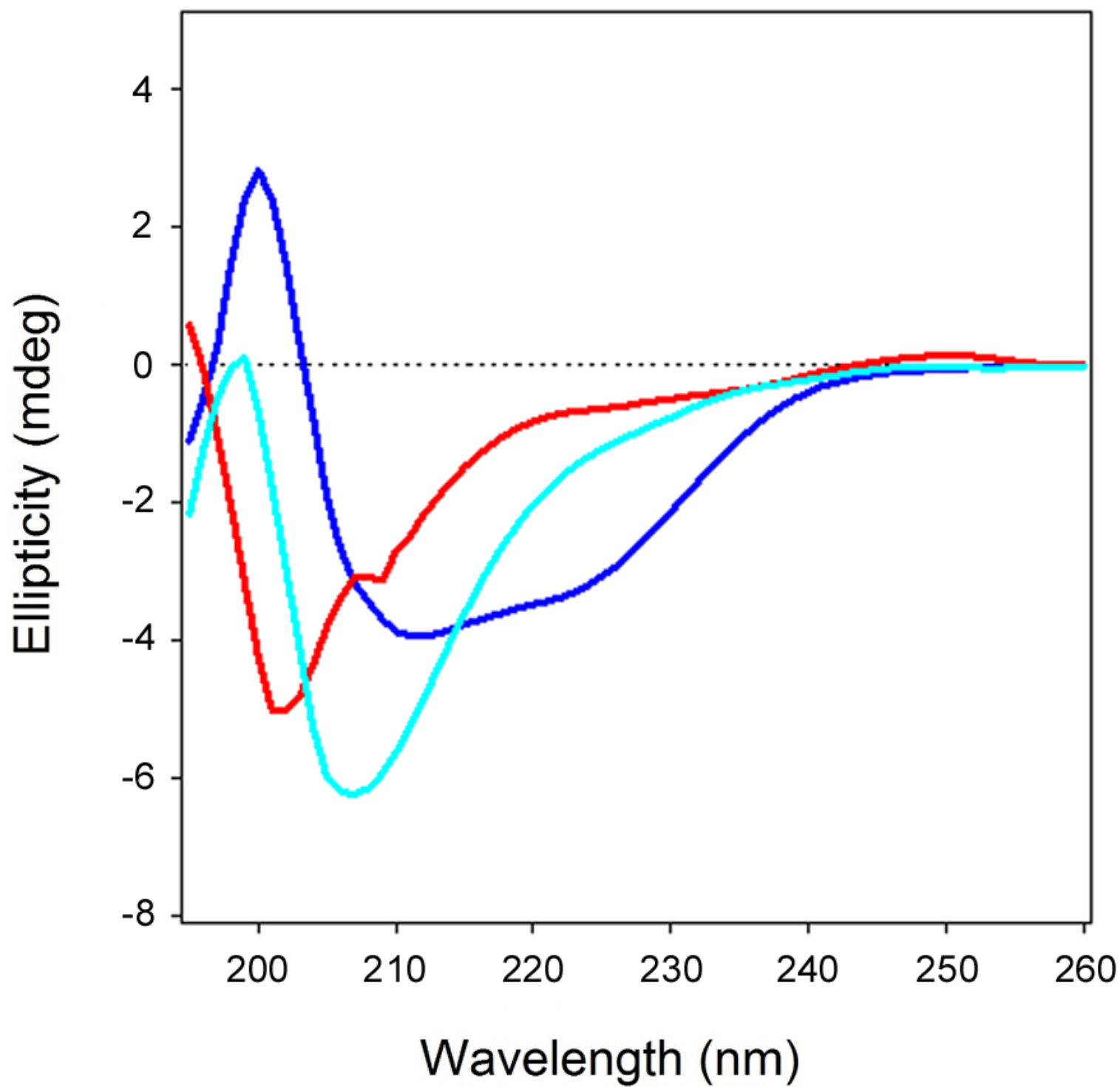
719



**FIGURE S1**

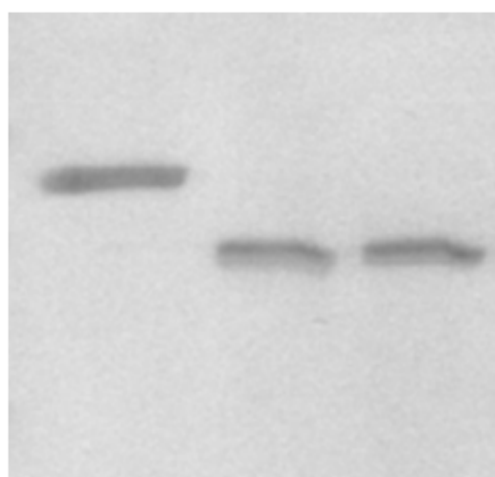


**FIGURE S2**



**FIGURE S3**

Casein	+	+	+
Trypsin	-	+	+
Glycerol	-	-	+



- Casein  
- Trypsin

FIGURE S4

