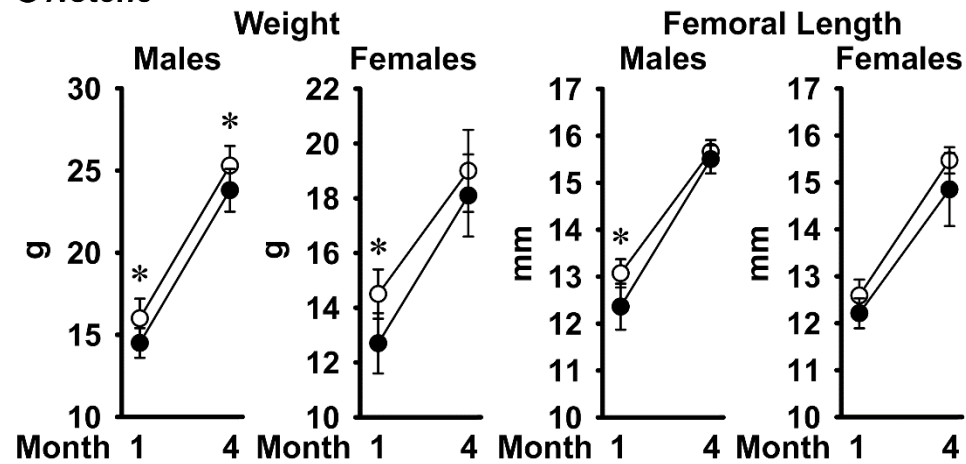


## Supporting Information Figure 1

○ Control

● *Notch3<sup>tm1.1Ecan</sup>*



**Supporting Information Figure 1.** Weight and femoral length of male and female *Notch3<sup>tm1.1Ecan</sup>* mutant mice (filled black circles) and littermate wild type controls (open circles). Values are means  $\pm$  SD. Number of observations for 1 month old male control mice  $n = 7$  and *Notch3<sup>tm1.1Ecan</sup>*  $n = 9$ ; female control  $n = 4$  and *Notch3<sup>tm1.1Ecan</sup>*  $n = 4$ . Number of observations for 4 month old male control mice  $n = 11$  and *Notch3<sup>tm1.1Ecan</sup>*  $n = 10$ ; female control  $n = 8$  and *Notch3<sup>tm1.1Ecan</sup>*  $n = 8$ . \*Significantly different between *Notch3<sup>tm1.1Ecan</sup>* mutant mice and control,  $p < 0.05$  by unpaired  $t$ -test.