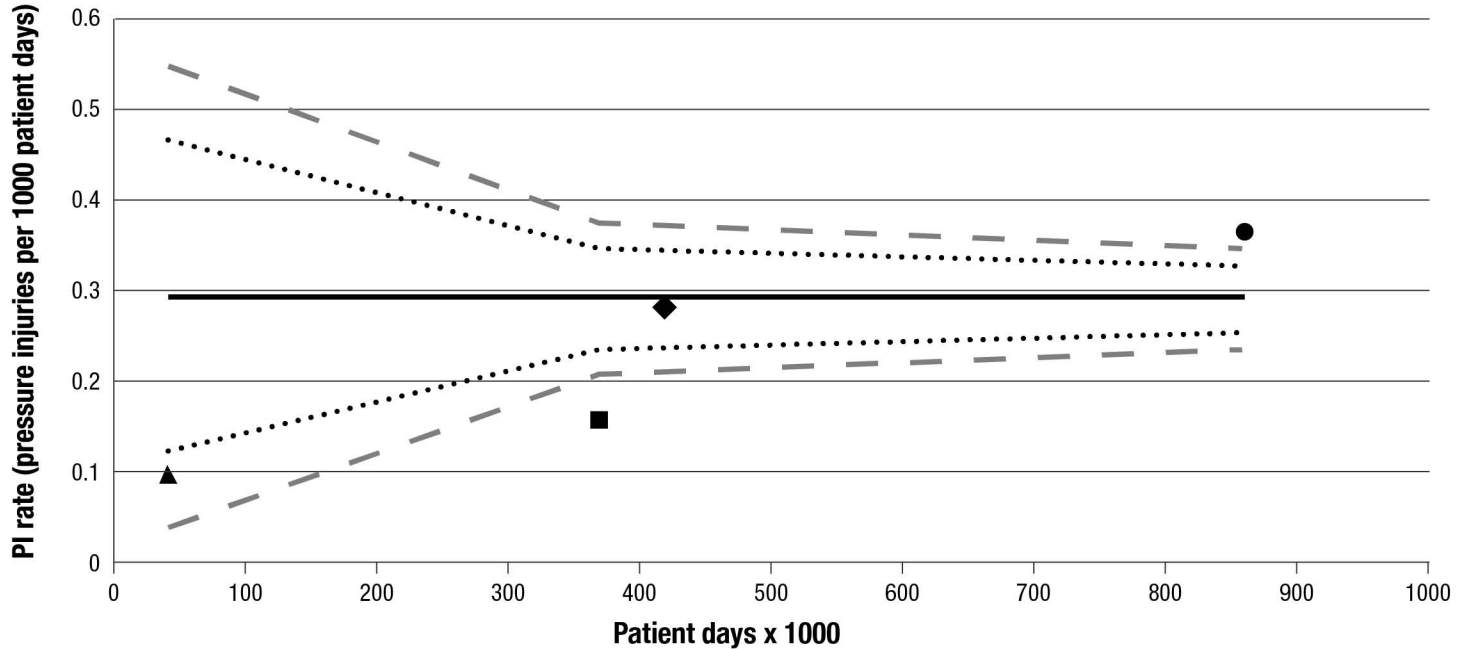


# Pressure Injury Funnel Chart

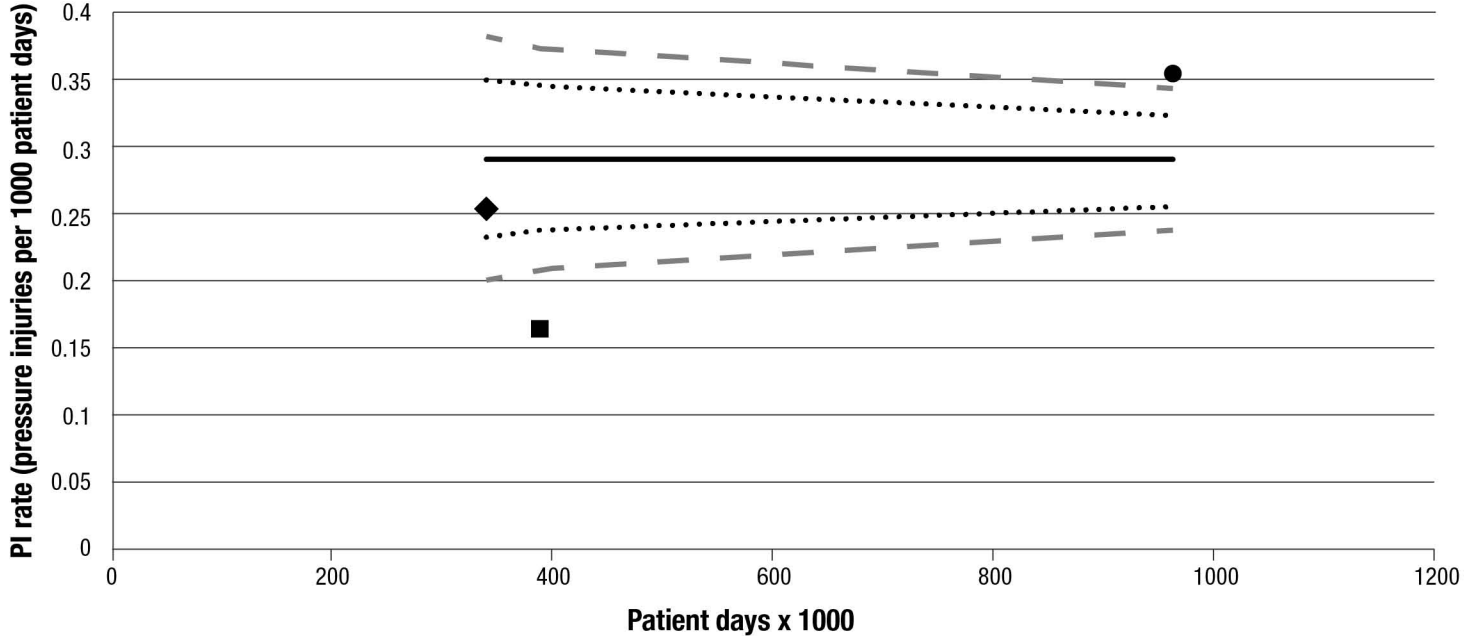
Assess skin in contact with medical devices



- ▲ Do Not Implement Element (2)
- Element Not Implemented Reliably (<80%) (26)
- ◆ Implement Element, Do Not Measure Reliability (16)
- Element Implemented Reliably (>80%) (10)
- Centerline (0.291)
- ..... UCL-2sigma
- ..... LCL-2sigma
- - - UCL-3sigma
- - - LCL-3sigma

# Pressure Injury Funnel Chart

Turn immobile patients at least every 2 hours or other increment



● Element Not Implemented Reliably (<80%) (30)

— Centerline (0.291)

..... UCL-2sigma

- - - UCL-3sigma

◆ Implement Element, Do Not Measure Reliability (14)

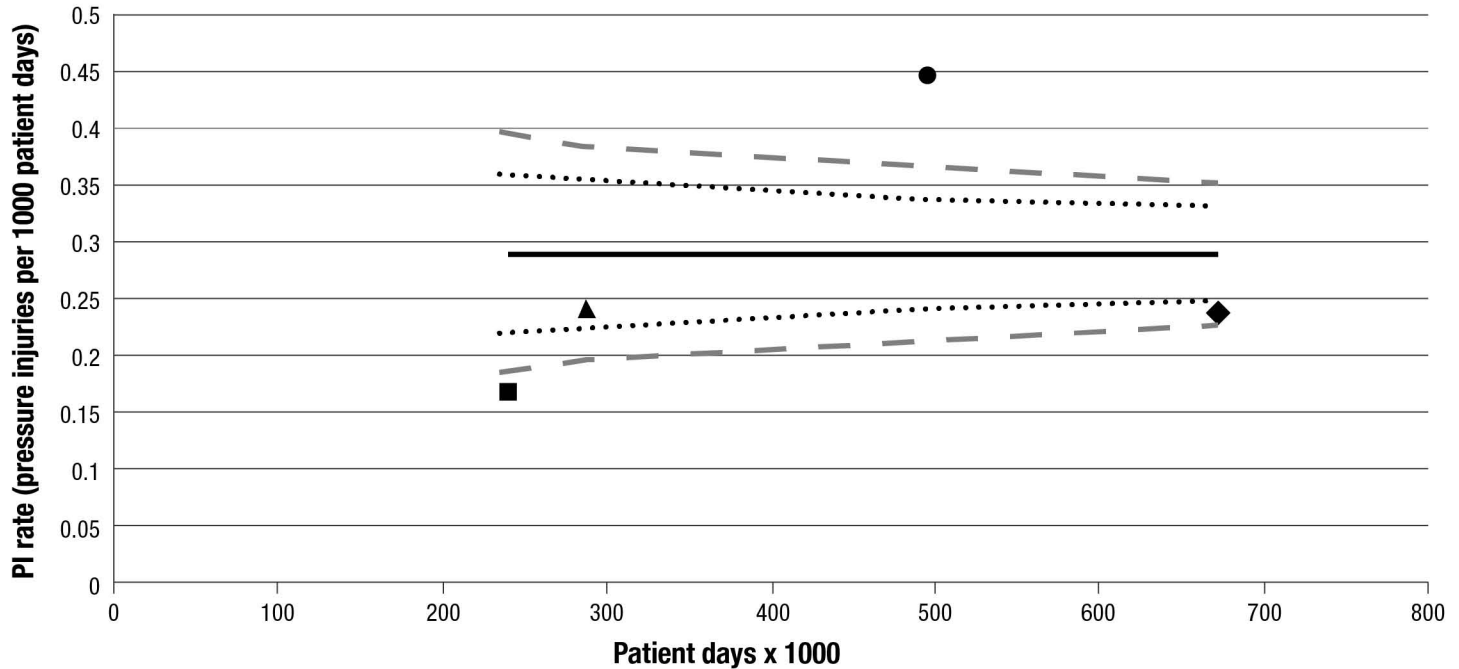
■ Element Implemented Reliably (>80%) (10)

..... LCL-2sigma

- - - LCL-3sigma

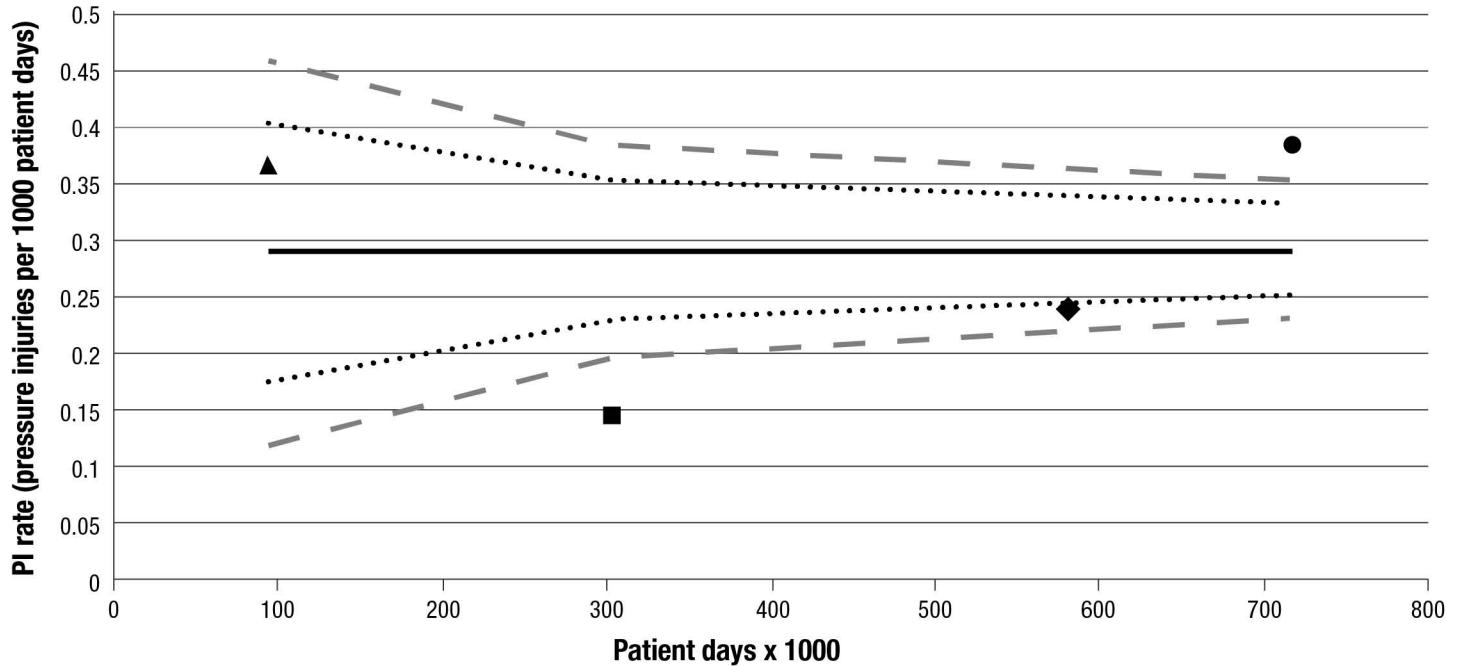
# Pressure Injury Funnel Chart

Maintain HOB less than 30 degrees



# Pressure Injury Funnel Chart

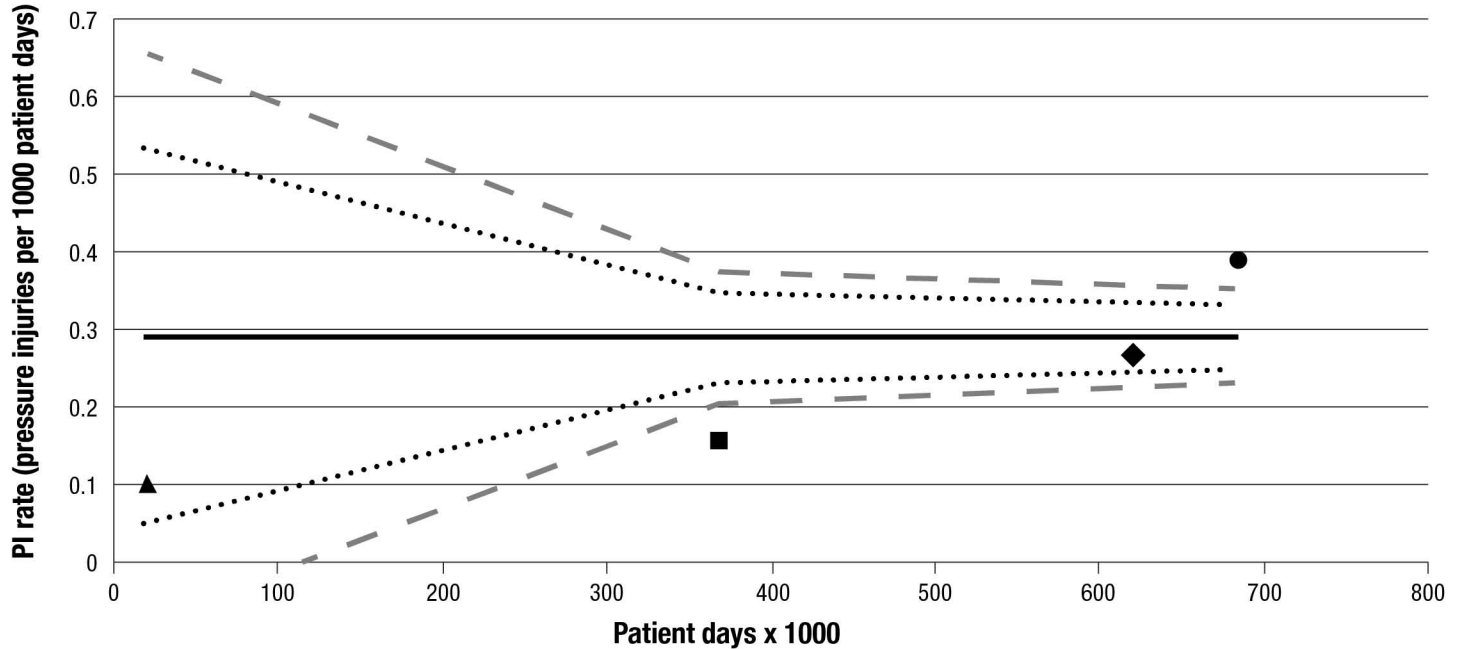
Evaluate need for specialty bed



- ▲ Do Not Implement Element (2)
- Element Not Implemented Reliably (<80%) (24)
- ◆ Implement Element, Do Not Measure Reliability (20)
- Element Implemented Reliably (>80%) (8)
- Centerline (0.291)
- ..... LCL-2sigma
- ..... UCL-2sigma
- - - LCL-3sigma
- - - UCL-3sigma

# Pressure Injury Funnel Chart

Cushion bony prominences



▲ Do Not Implement Element (1)

● Element Not Implemented Reliably (<80%) (23)

— Centerline (0.291)

..... LCL-2sigma

- - - LCL-3sigma

◆ Implement Element, Do Not Measure Reliability (20)

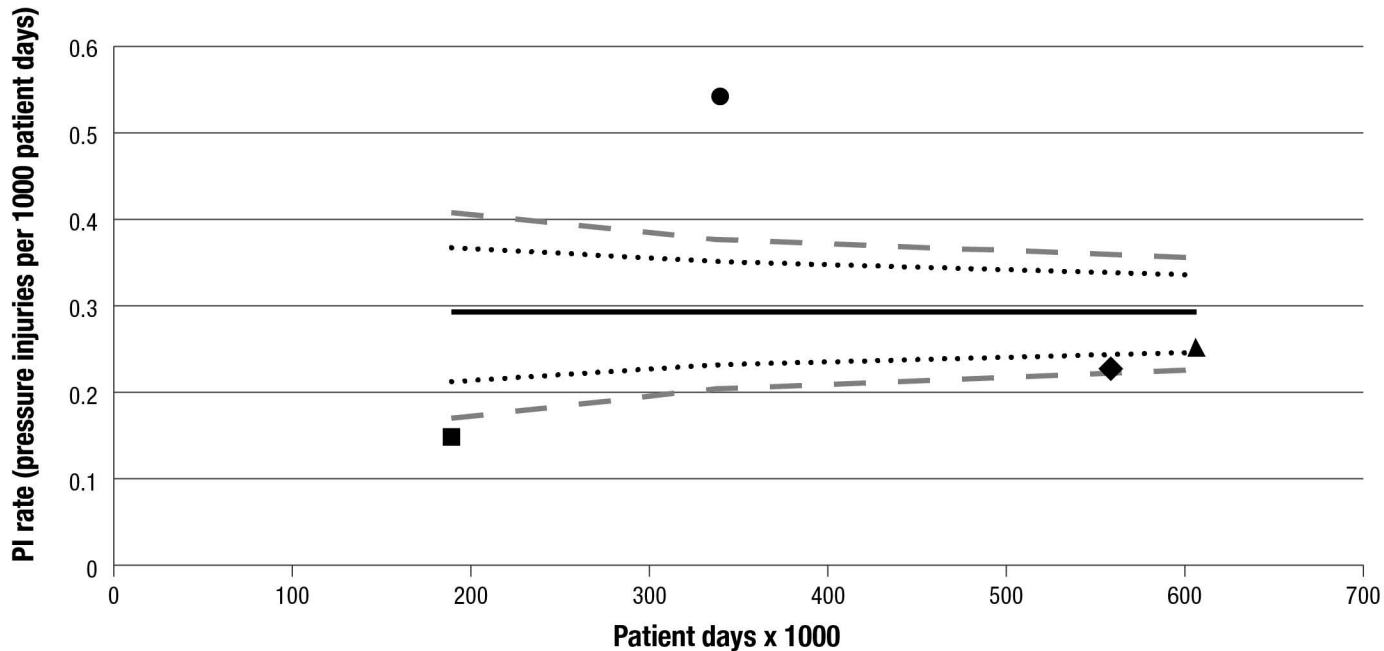
■ Element Implemented Reliably (>80%) (10)

..... UCL-2sigma

- - - UCL-3sigma

# Pressure Injury Funnel Chart

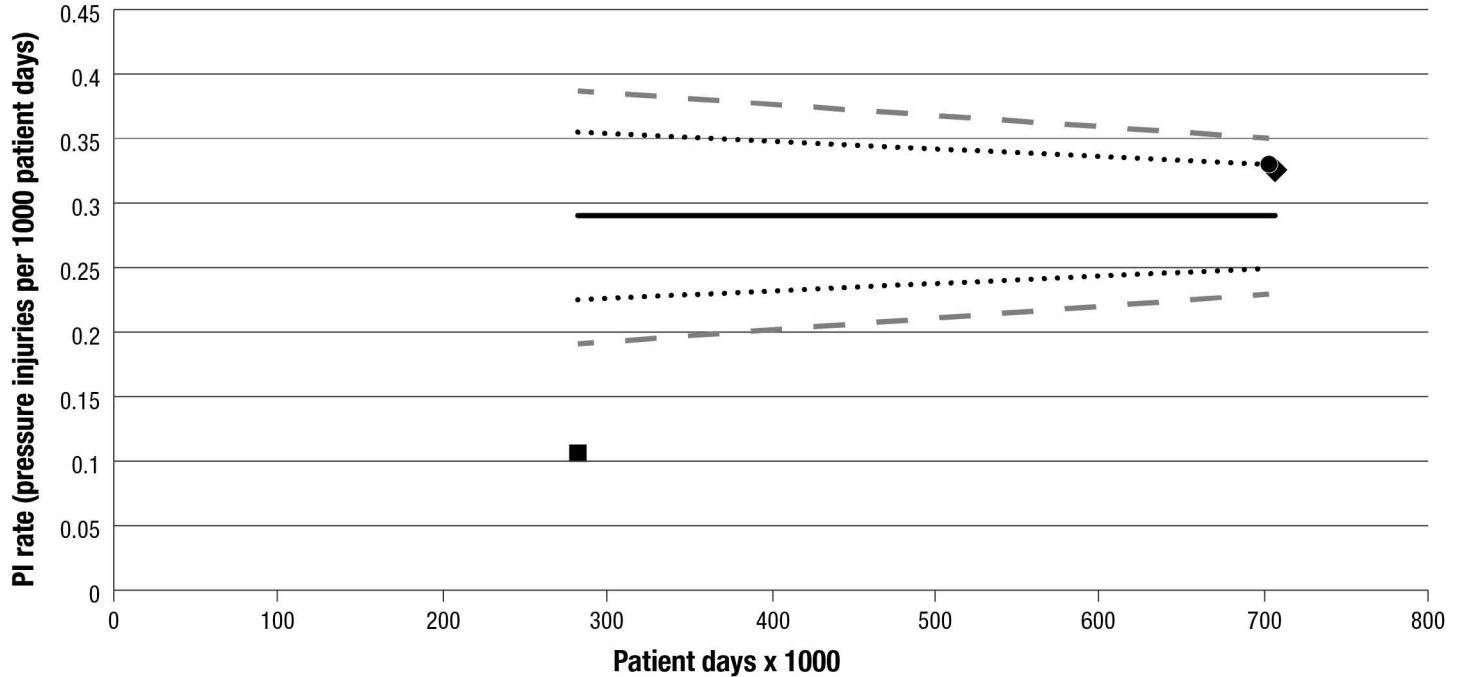
## Apply barrier cream for all diapered patients



- ▲ Do Not Implement Element (17)
- Element Not Implemented Reliably (<80%) (14)
- Centerline (0.291)
- ⋯ LCL-2sigma
- LCL-3sigma
- ◆ Implement Element, Do Not Measure Reliability (17)
- Element Implemented Reliably (>80%) (6)
- ⋯ UCL-2sigma
- UCL-3sigma

# Pressure Injury Funnel Chart

Keep skin clean and dry



● Element Not Implemented Reliably (<80%) (22)

— Centerline (0.291)

..... LCL-2sigma

- - - LCL-3sigma

◆ Implement Element, Do Not Measure Reliability (24)

■ Element Implemented Reliably (>80%) (8)

..... UCL-2sigma

- - - UCL-3sigma