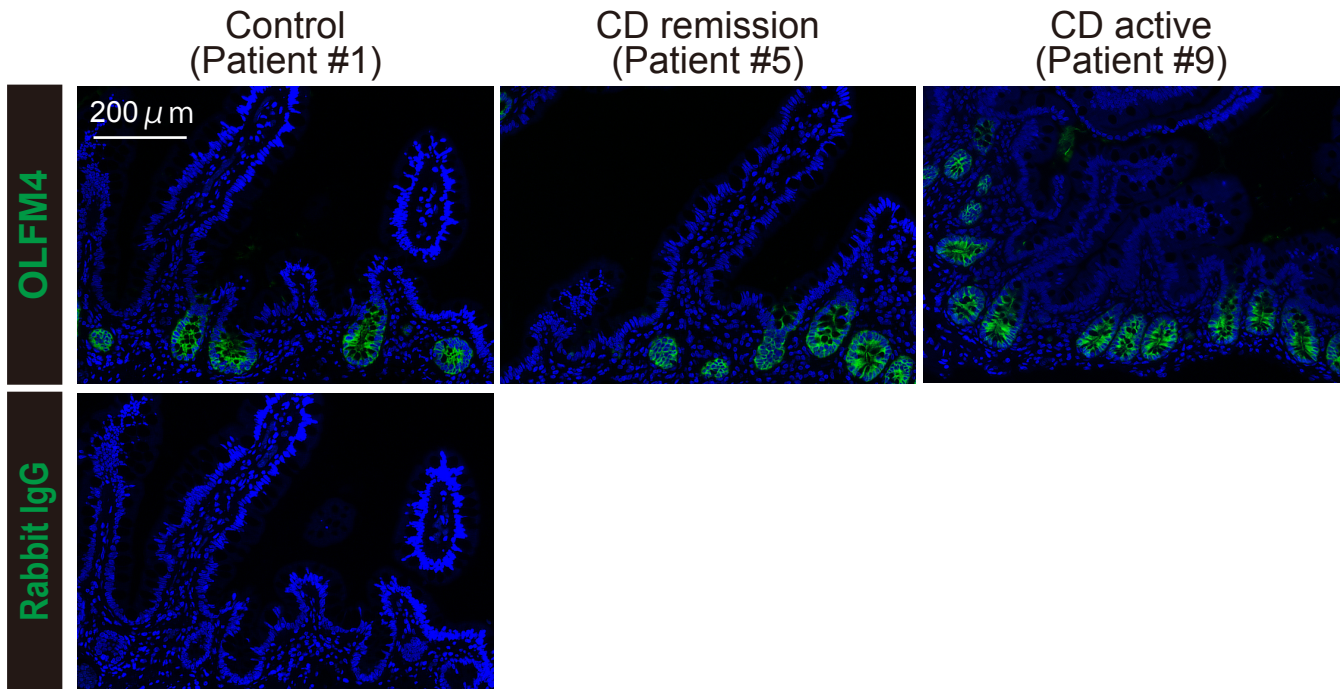
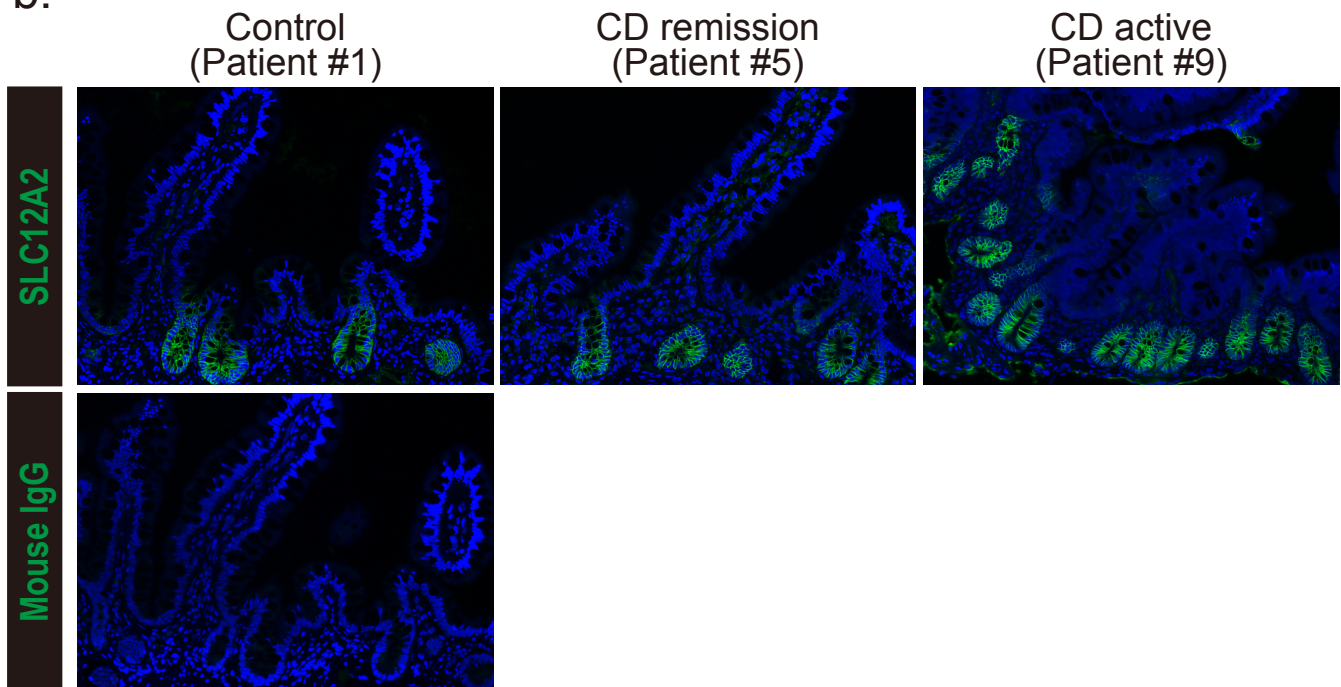


a.



b.



**Supplementary Figure S1. Expression of OLFM4 and SLC12A2 in biopsy specimens.**

Expression of OLFM4 (a) and SLC12A2 (b) were analyzed by immunohistochemistry using small intestinal biopsies. Positive signals are shown as green signals of the fluorescein-labeled tyramid. Results of corresponding non-immunized control IgG are also shown. Data shows results of the same area (100 cm proximal to the ileocecal valve).