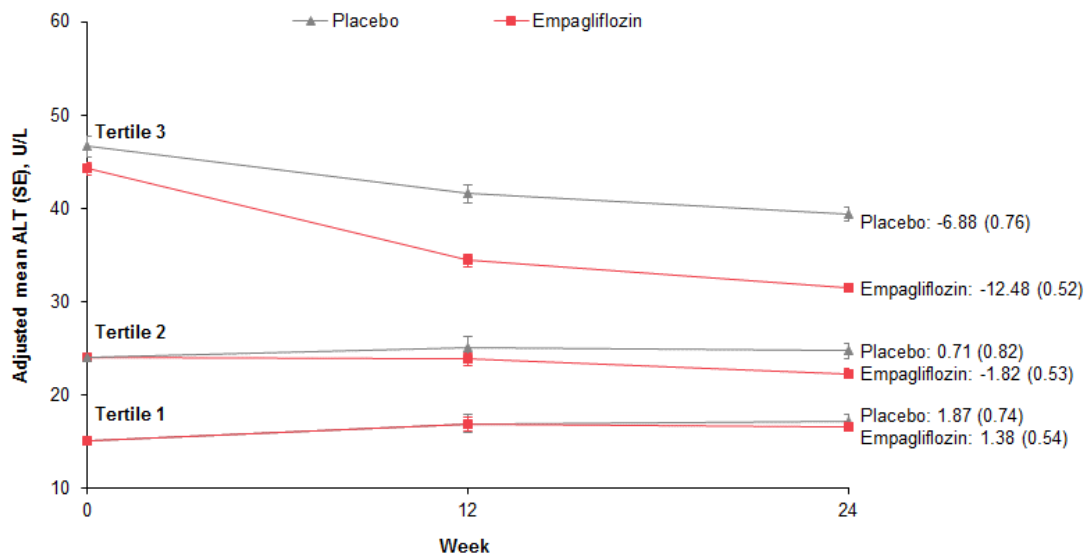


Empagliflozin is associated with improvements in liver enzymes potentially consistent with reductions in liver fat: results from randomised trials including the EMPA-REG OUTCOME® trial (Sattar N et al.)

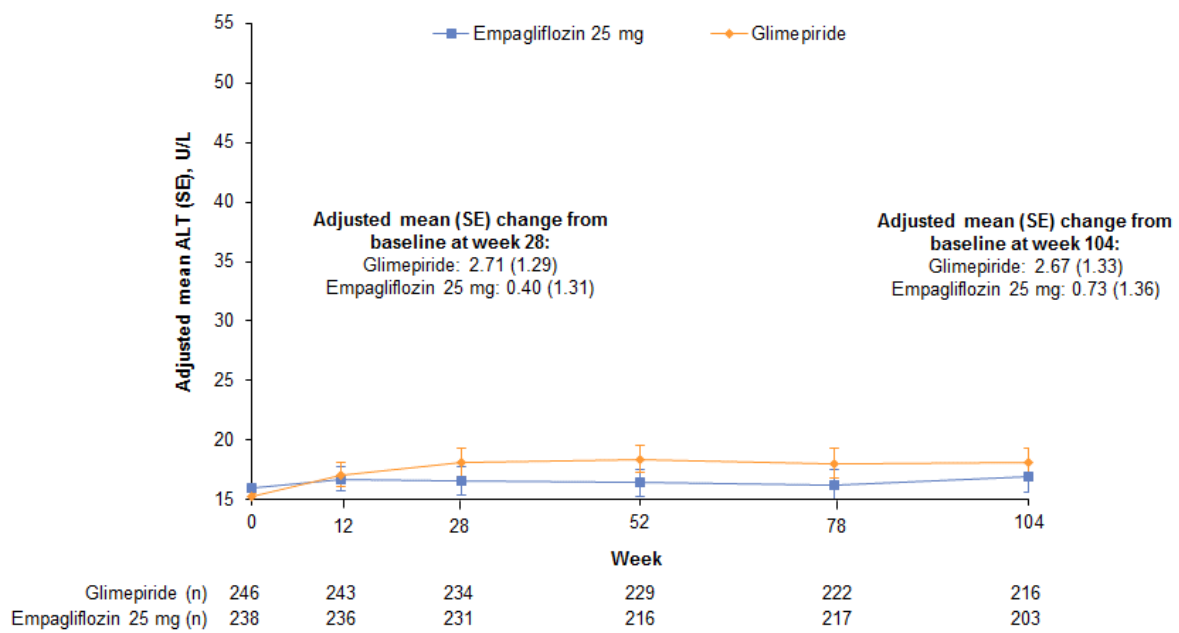
Electronic supplementary material (ESM)



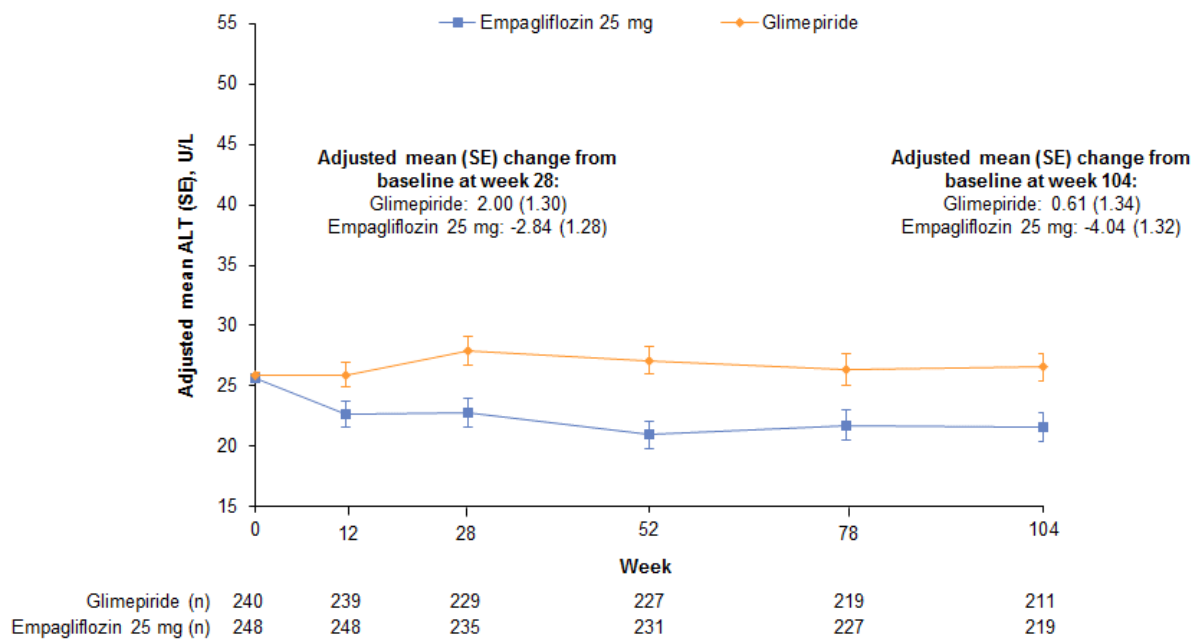
	0	12	24
Tertile 3			
Placebo (n)	286	283	260
Empagliflozin (n)	515	510	487
Tertile 2			
Placebo (n)	228	227	207
Empagliflozin (n)	519	514	499
Tertile 1			
Placebo (n)	261	258	242
Empagliflozin (n)	554	549	523

ESM Figure 1. Changes in alanine aminotransferase (ALT) in pooled 24-week trial data in tertiles by baseline ALT. Mixed model repeated measures analysis in patients treated with ≥ 1 dose of study drug based on observed cases, including values after initiation of rescue medication. Baseline values are mean (SE). SE, standard error.

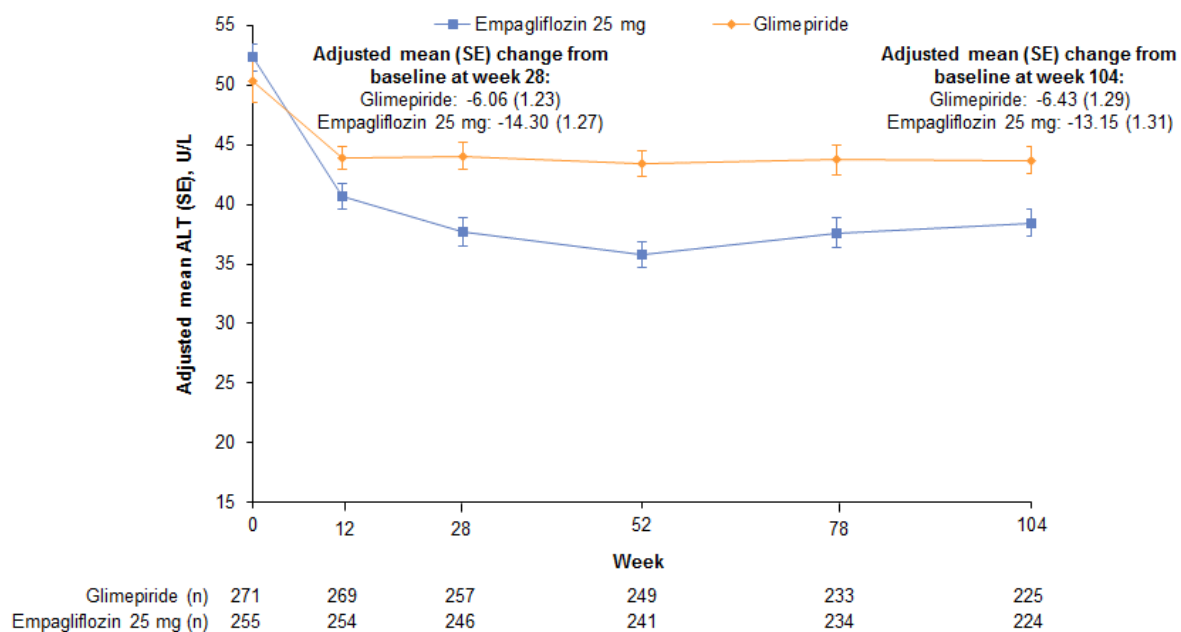
a



b

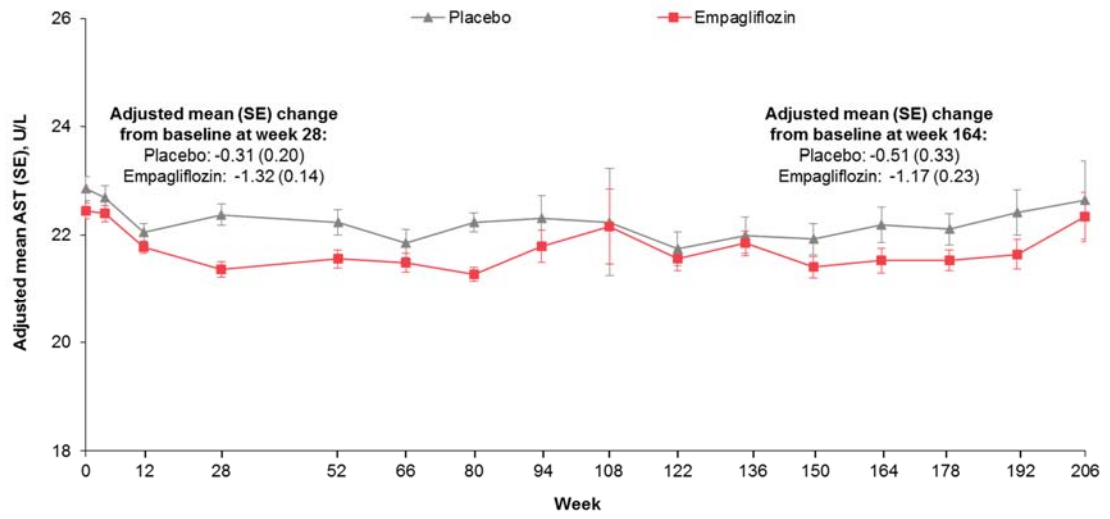


C



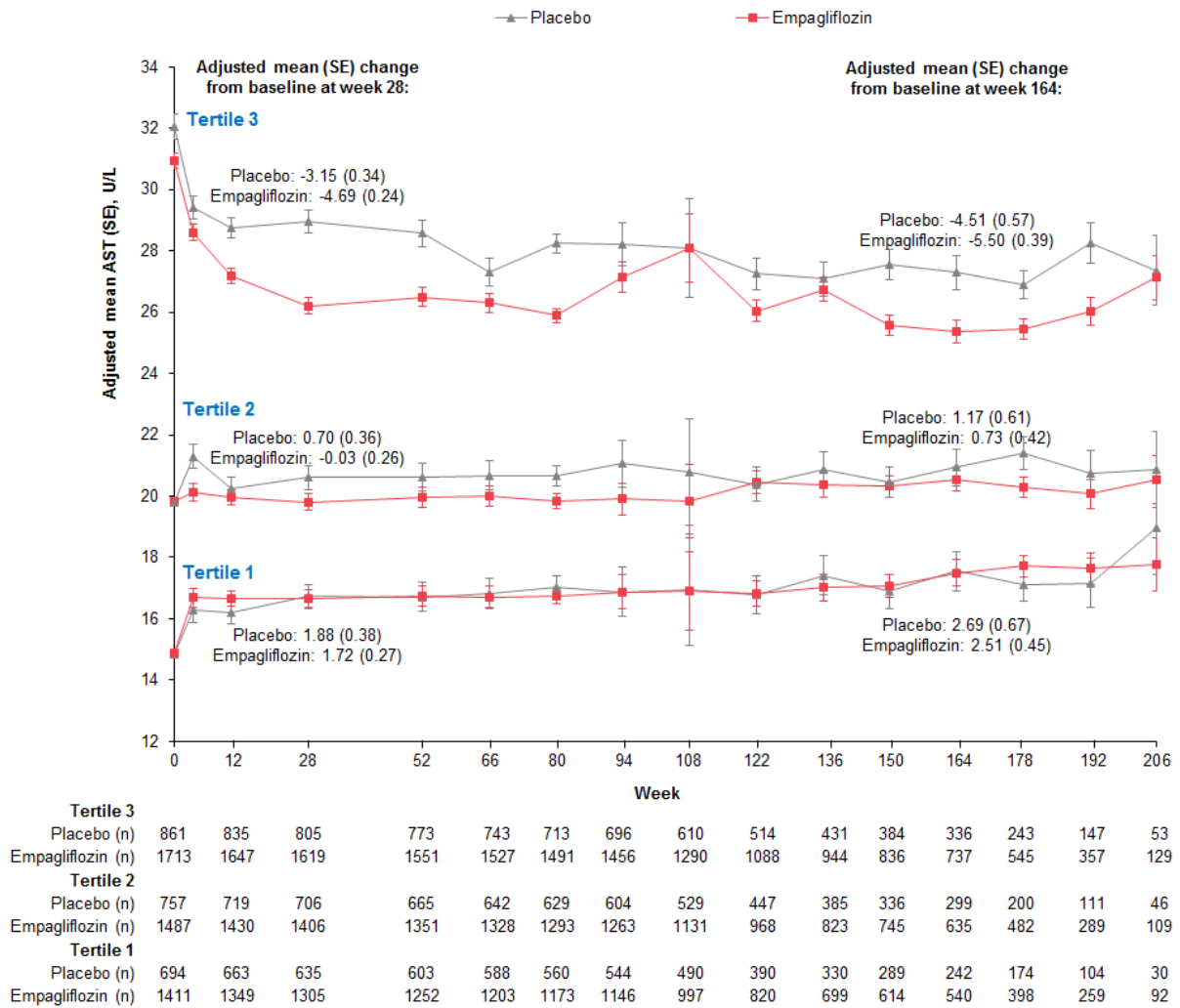
ESM Figure 2. Changes in alanine aminotransferase (ALT) in the EMPA-REG H2H-SU trial in tertiles of patients by baseline ALT: (a) tertile 1; (b) tertile 2; (c) tertile 3. Mixed model repeated measures analysis in patients treated with ≥ 1 dose of study drug based on observed cases, including values after initiation of rescue medication. Baseline values are mean (SE). SE, standard error.

a



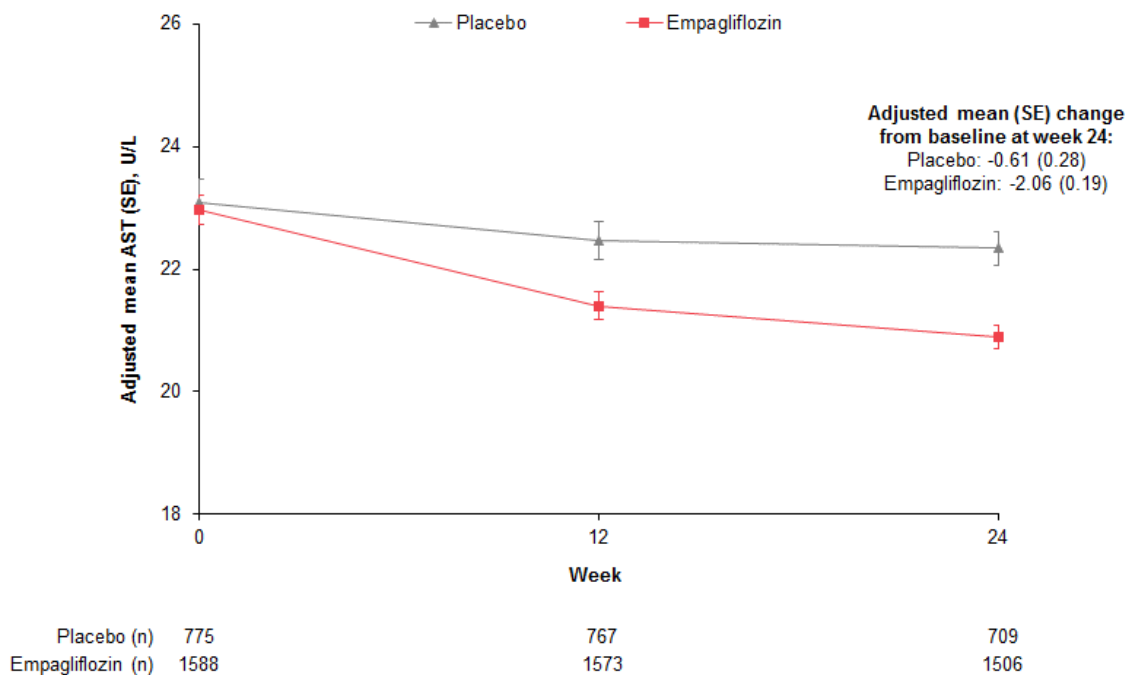
Placebo (n)	2312	2217	2146	2041	1973	1902	1844	1629	1351	1146	1009	877	617	362	129
Empagliflozin (n)	4611	4426	4330	4154	4058	3957	3865	3418	2876	2466	2195	1912	1425	905	330

b

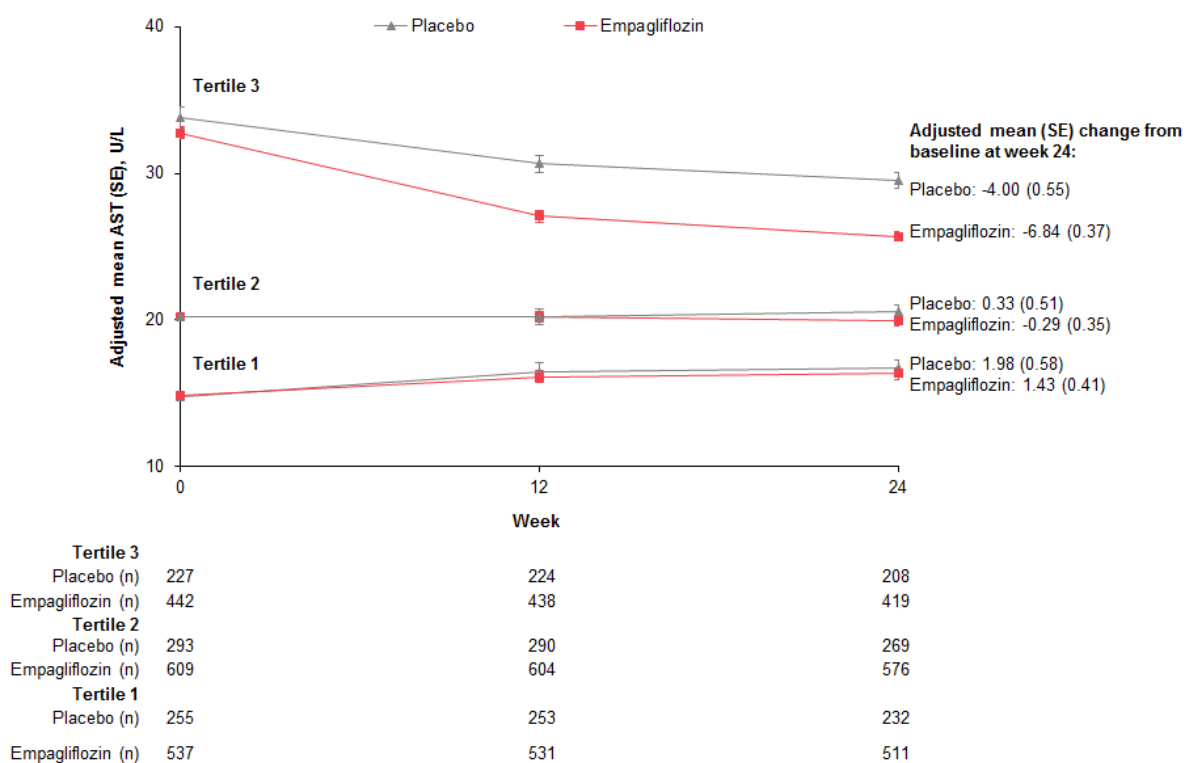


ESM Figure 3. Changes in aspartate aminotransferase (AST) in the EMPA-REG OUTCOME[®] trial in (a) all patients and (b) tertiles by baseline AST. Mixed model repeated measures analysis in patients treated with ≥ 1 dose of study drug based on observed cases, including values after initiation of rescue medication.

a

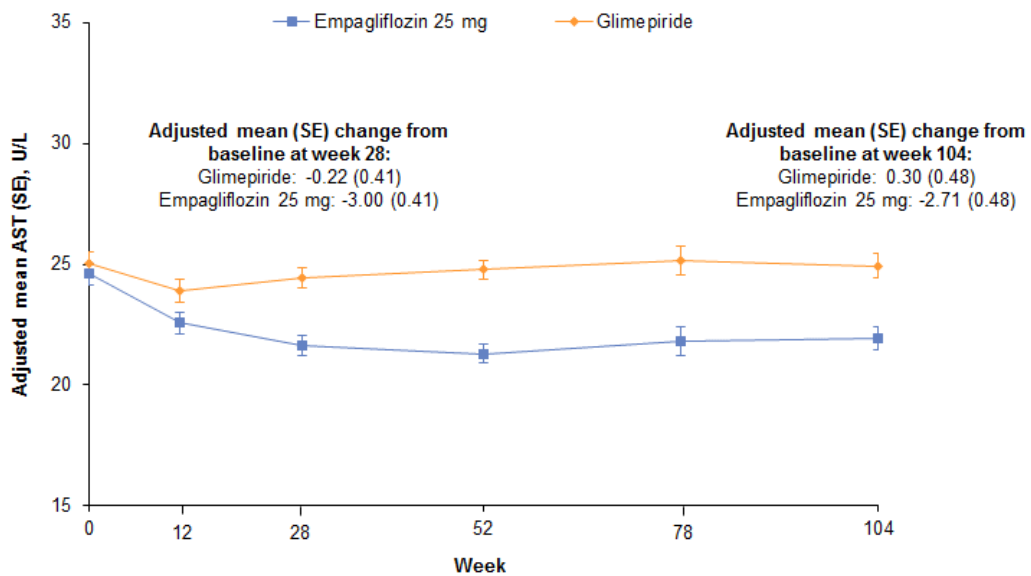


b



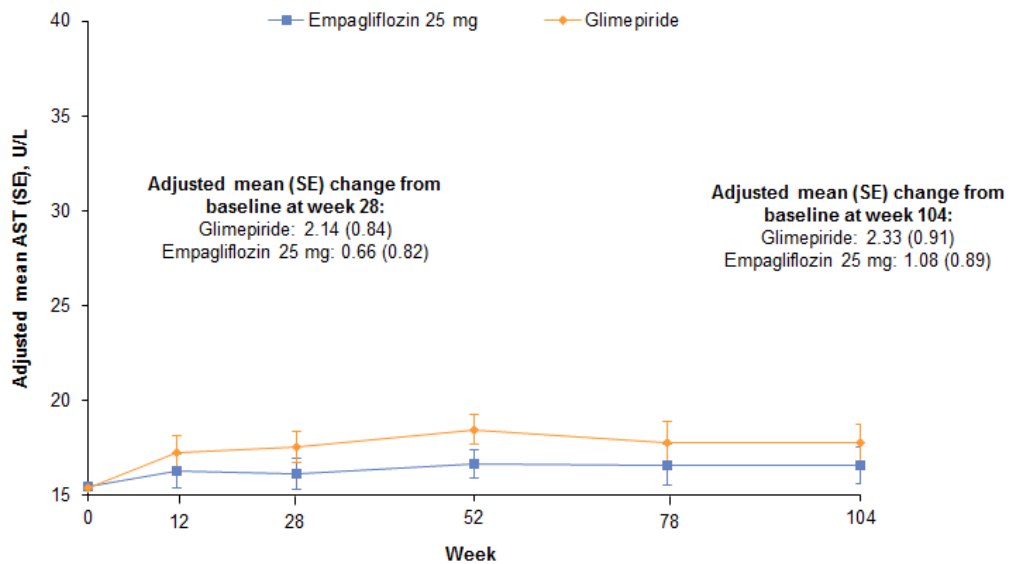
ESM Figure 4. Changes in aspartate aminotransferase (AST) in pooled 24-week trial data in (a) all patients and (b) tertiles of patients by baseline ALT. Mixed model repeated measures analysis in patients treated with ≥ 1 dose of study drug based on observed cases, including values after initiation of rescue medication. Baseline values are mean (SE). SE, standard error.

a



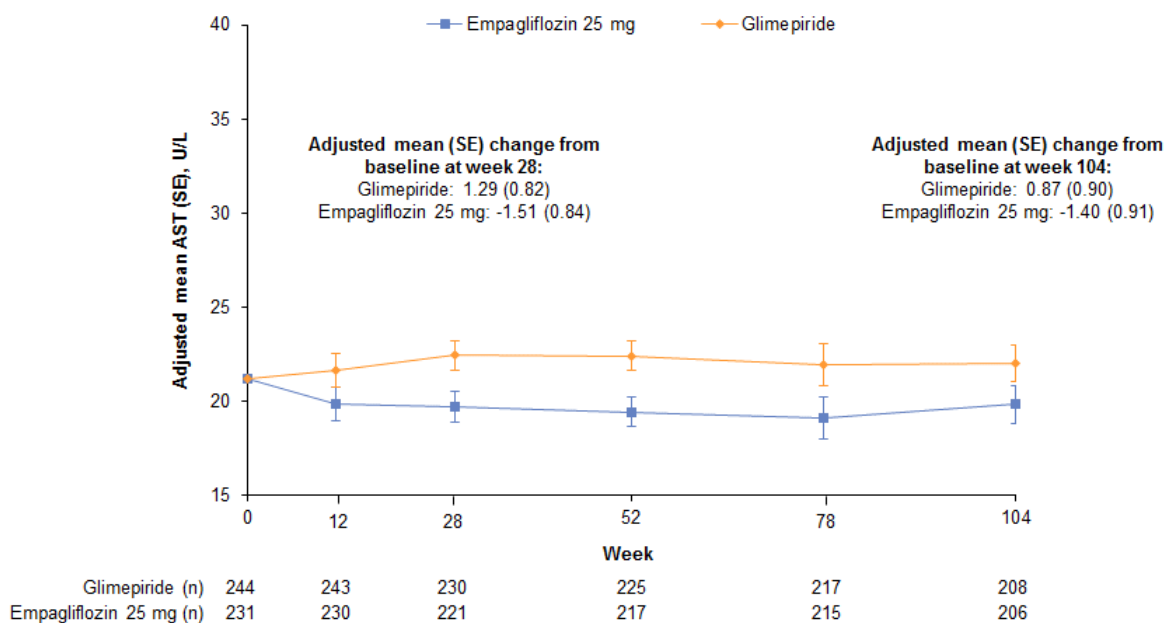
Empagliflozin 25 mg (n)	741	738	708	687	678	646
Glimepiride (n)	757	751	720	703	674	653

b

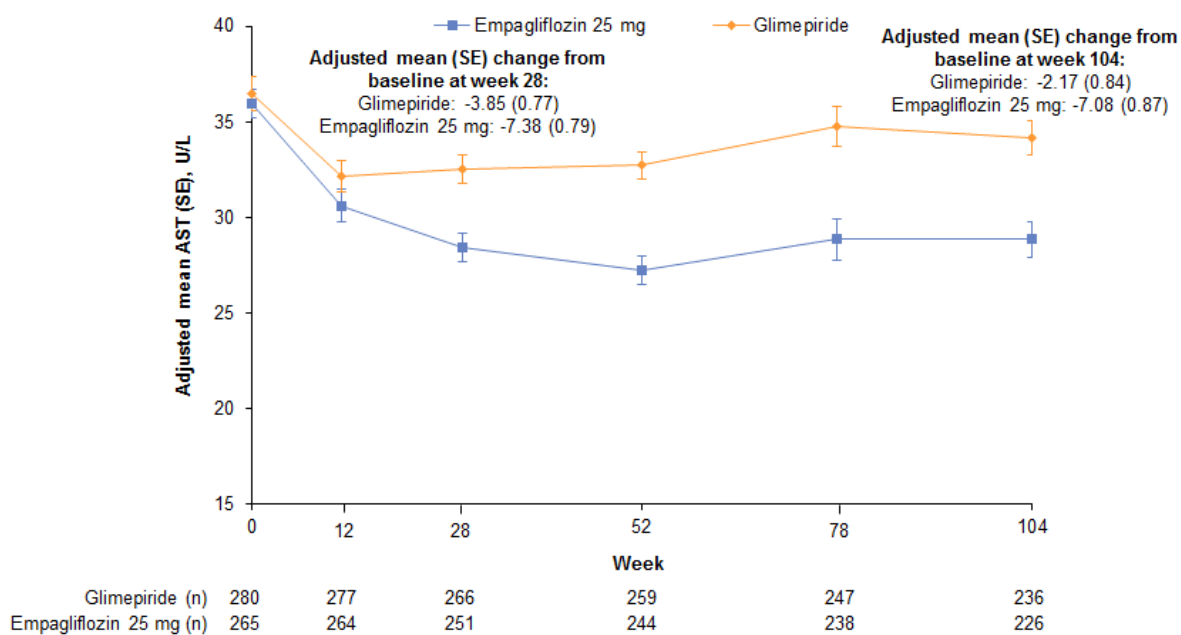


Glimepiride (n)	233	231	224	219	210	209
Empagliflozin 25 mg (n)	245	244	236	226	225	214

c



d



ESM Figure 5. Changes in aspartate aminotransferase (AST) in the EMPA-REG H2H-SU trial in (a) all patients and in tertiles of patients by baseline ALT: (b) tertile 1; (c) tertile 2; (d) tertile 3. Mixed model repeated measures analysis in patients treated with ≥ 1 dose of study drug based on observed cases, including values after initiation of rescue medication. Baseline values are mean (SE). SE, standard error