

## Supplementary Figure

### Accretionary prism collapse: a new hypothesis on the source of the 1771 giant tsunami in the Ryukyu Arc, SW Japan

Yukinobu Okamura<sup>1\*</sup>, Azusa Nishizawa<sup>2</sup>, Yushiro Fujii<sup>3</sup>, Hideaki Yanagisawa<sup>4</sup>

<sup>1</sup> Research Institute of Earthquake and Volcano Geology, Geological Survey of Japan, AIST, 1-1-1 Higashi, Tsukuba, Ibaraki 305-8567, Japan

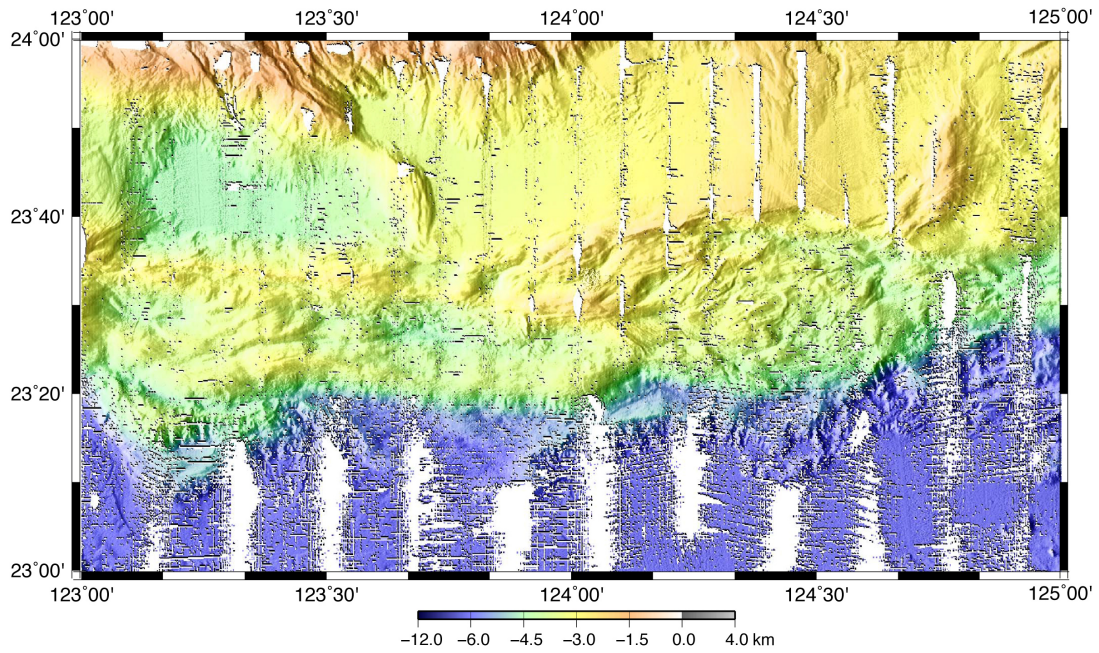
<sup>2</sup> Hydrographic and Oceanographic Department, Japan Coast Guard, 3-1-1 Kasumigaseki, Chiyoda-ku, Tokyo 100-8932, Japan

<sup>2</sup> National Research Institute for Earth Science and Disaster Resilience, 3-1, Tennodai, Tsukuba, Ibaraki, 305-0006, Japan

<sup>3</sup> International Institute of Seismology and Earthquake Engineering, Building Research Institute, 1 Tachihara, Tsukuba, Ibaraki 305-0802, Japan

<sup>4</sup> Department of Regional Design, Faculty of Liberal Art, Tohoku Gakuin University, 2-1-1 Tenjinzawa, Izumi-ku, Sendai, Miyagi 981-3193, Japan

\* Corresponding author: [okamura-y@aist.go.jp](mailto:okamura-y@aist.go.jp)



**Supplementary Figure A1. Map showing the original bathymetric data.**

The data was obtained by multi-narrow-beam echo sounders. White areas are gaps in the data.