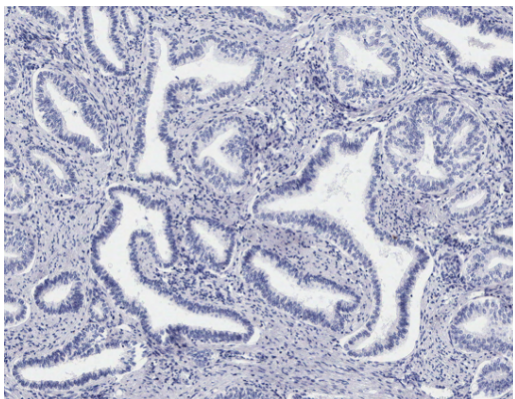
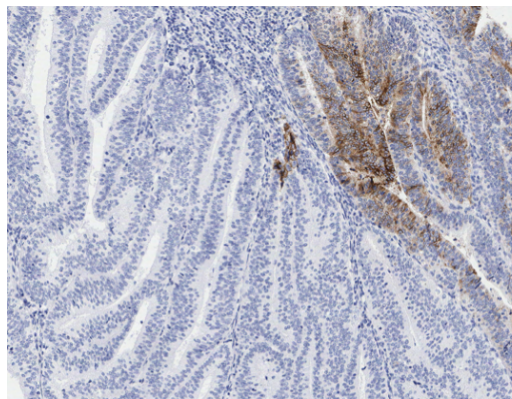


Supplementary Figure 1 L1CAM expression in tumour cells (a) score 0 = 0%, (b) score 1 = 1-10%, (c) score 2 and 3 = \geq 10%

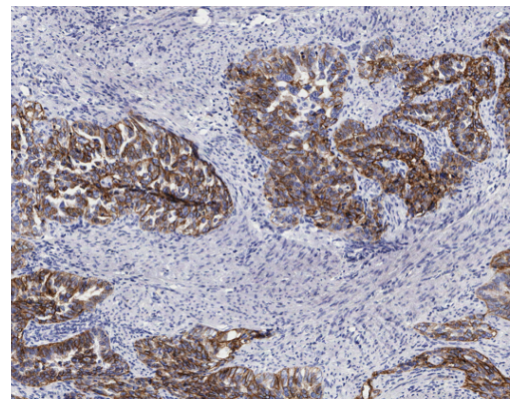
(a) Score 0 (no staining)



(b) Score 1 (1-10%)



(c) Score 2 and 3 (\geq 10%)



L1CAM
(CD 171)