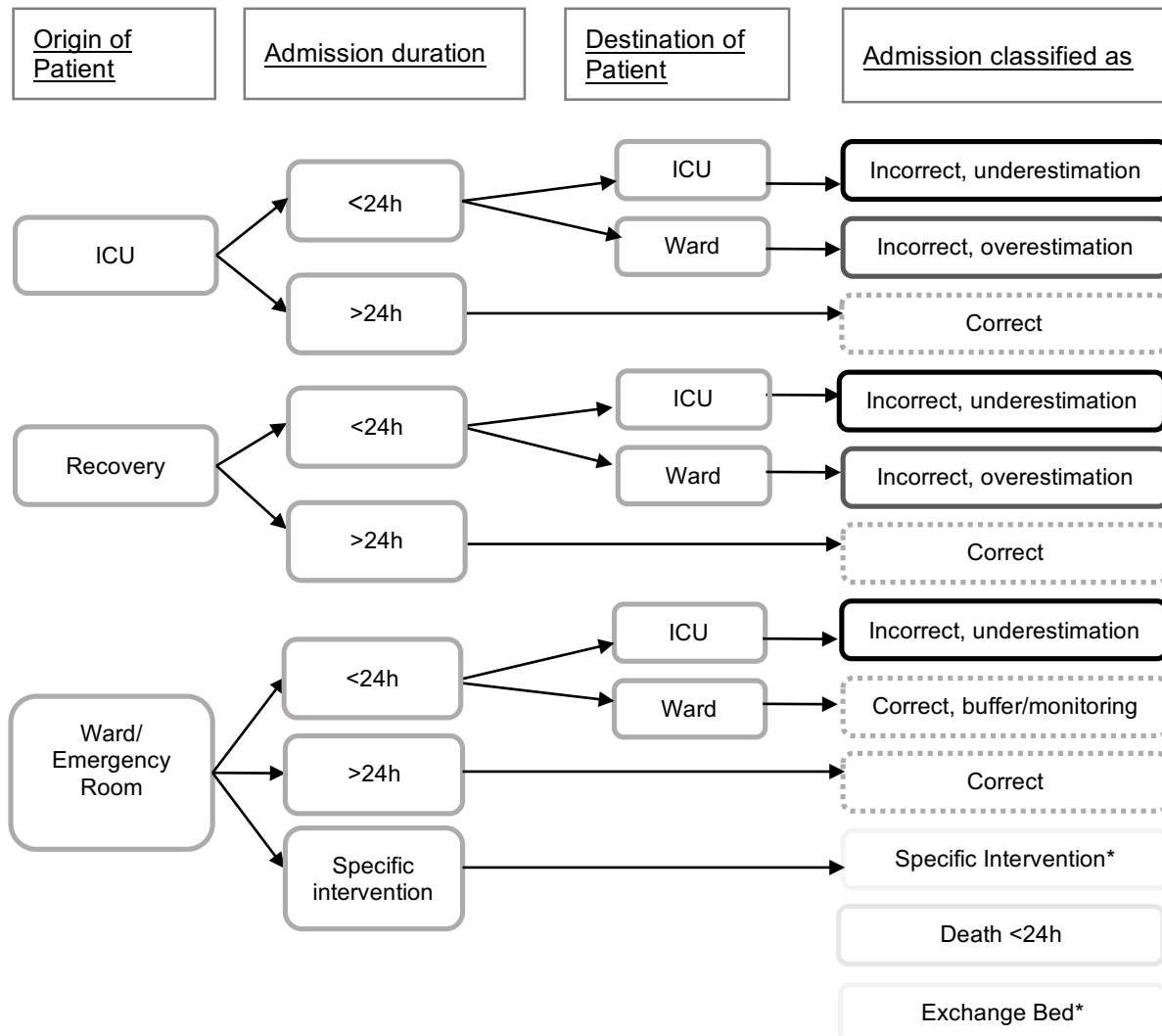


Supplementary File 1.
Flow Chart of the Logistical Classifications of Correct Admissions



This Flow Chart demonstrates the logistical classification of admissions, as used in this article and elaborated in more detail elsewhere.¹¹ It uses the origin of the patient, the admission duration and the destination of discharge to determine whether an admission is correct or incorrect. A further distinction is made to determine whether incorrect admissions are due to under-triage of level of care needed (early transfer to the ICU) or due to over-triage of level of care needed.