

Supplementary Online Content

Limwattananon C, Limwattananon S, Tungthong J, Sirikomom K. Association between a centrally reimbursed fee schedule policy and access to cataract surgery in the Universal Coverage Scheme in Thailand. *JAMA Ophthalmol*. Published May 24, 2018. doi:10.1001/jamaophthalmol.2018.1843

eTable. Point Estimates and 95% CI of SII on CSR Across 13 Regions, 2005-2015

eFigure. Gradients in CSR Across 13 Administrative Regions; 2005, 2010 and 2015

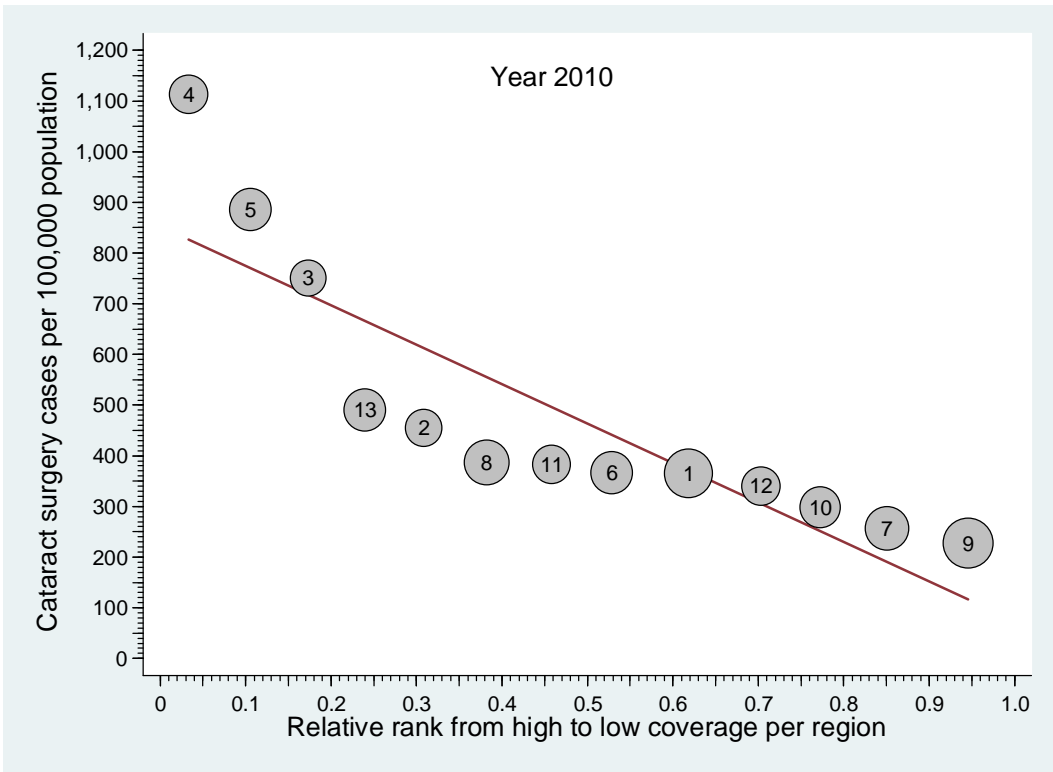
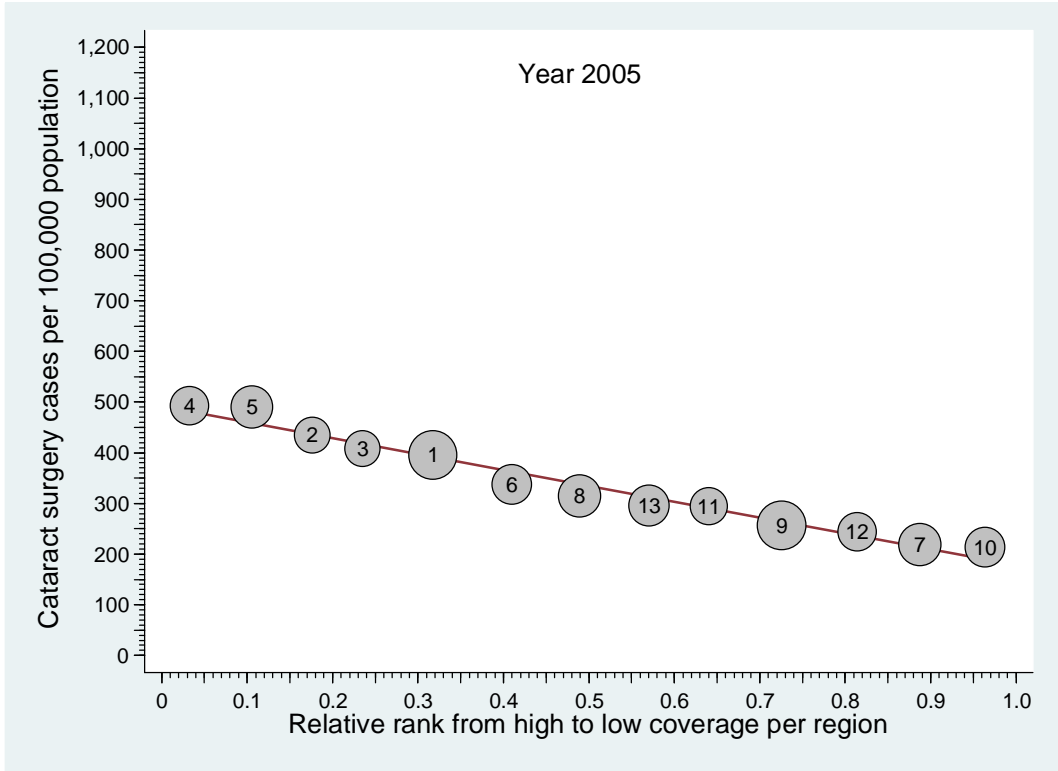
This supplementary material has been provided by the authors to give readers additional information about their work.

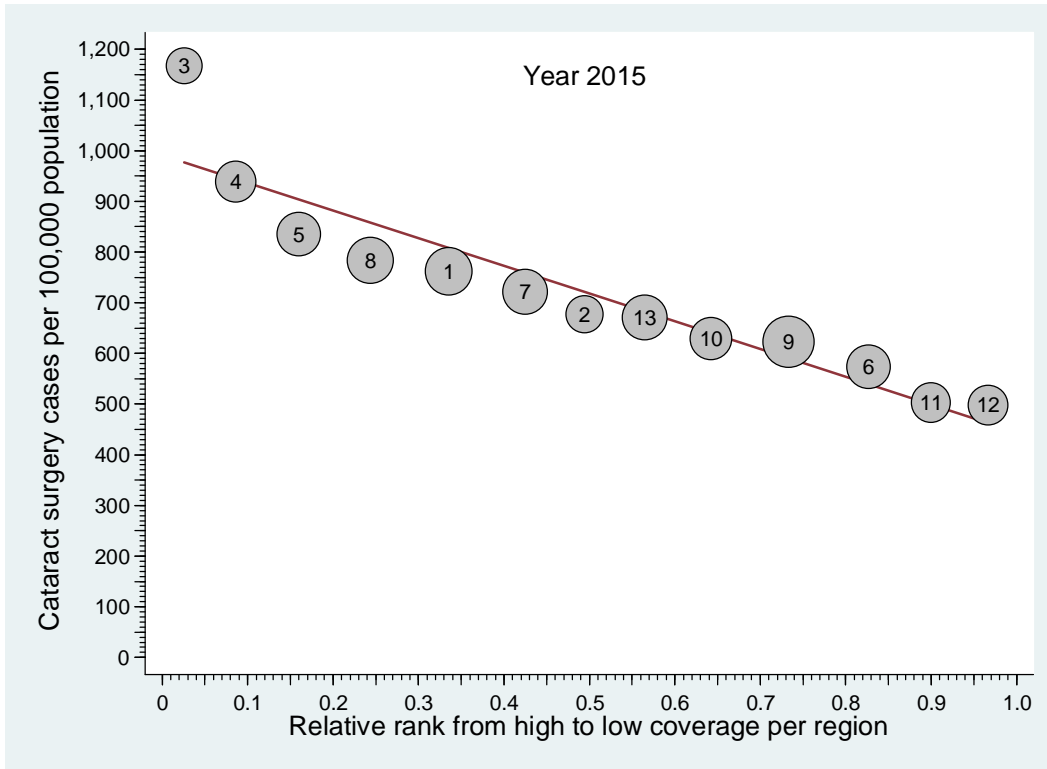
eTable. Point Estimates and 95% CI of SII on CSR Across 13 Regions, 2005-2015

Year	2005	2006	2007	2008	2009	2010	2011	2012	2013	2014	2015
Point estimate*	314.6	268.0	306.2	337.6	464.7	755.4	721.2	800.4	681.0	551.6	502.9
95% CI*	274.4 - 354.8	226.0 - 310.0	207.7 - 404.7	258.2 - 417.0	292.5 - 636.9	391.8 - 1,119.0	422.6 - 1,019.8	525.0 - 1,075.7	440.1 - 921.9	441.7 - 661.4	374.6 - 631.2

*Number of cataract surgery cases per 100,000 population

Abbreviation: CI, confidence interval; SII, Slope Index of Inequality; CSR, cataract surgery rate.





eFigure. Gradients in CSR Across 13 Administrative Regions; 2005, 2010 and 2015

Thirteen regions were plotted for the CSR on the vertical axis against corresponding ranks on the horizontal axis. Each circle with size proportional to the CSR represents each region. The straight line is the fitted slope of the CSR gradient against relative ranking of 13 regions. The SII, estimating inequality gap is a distance between the regional extremes.

Abbreviation: CSR, cataract surgery rate.