

Supplementary Material to: “Decreased serum PON1 arylesterase activity in familial hypercholesterolemia patients with a mutated *LDLR* gene”

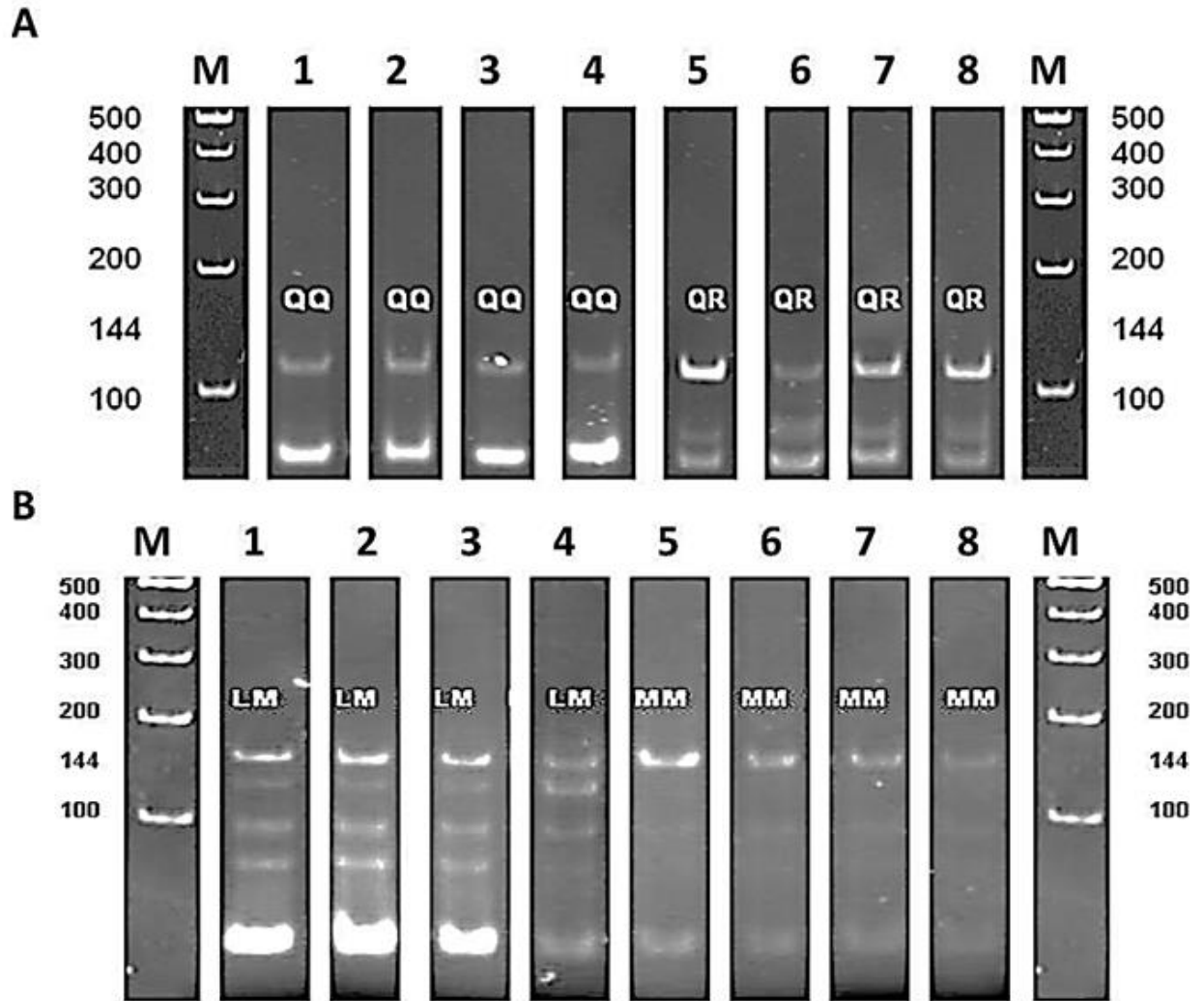


Figure S1 - RFLP results of *PON1* Q192R (Fig. A) and *PON1* L55M (Fig. B) amplified *HinfI* treated PCR products. M: DNA marker, Lanes 1-8: *HinfI* restricted PCR products