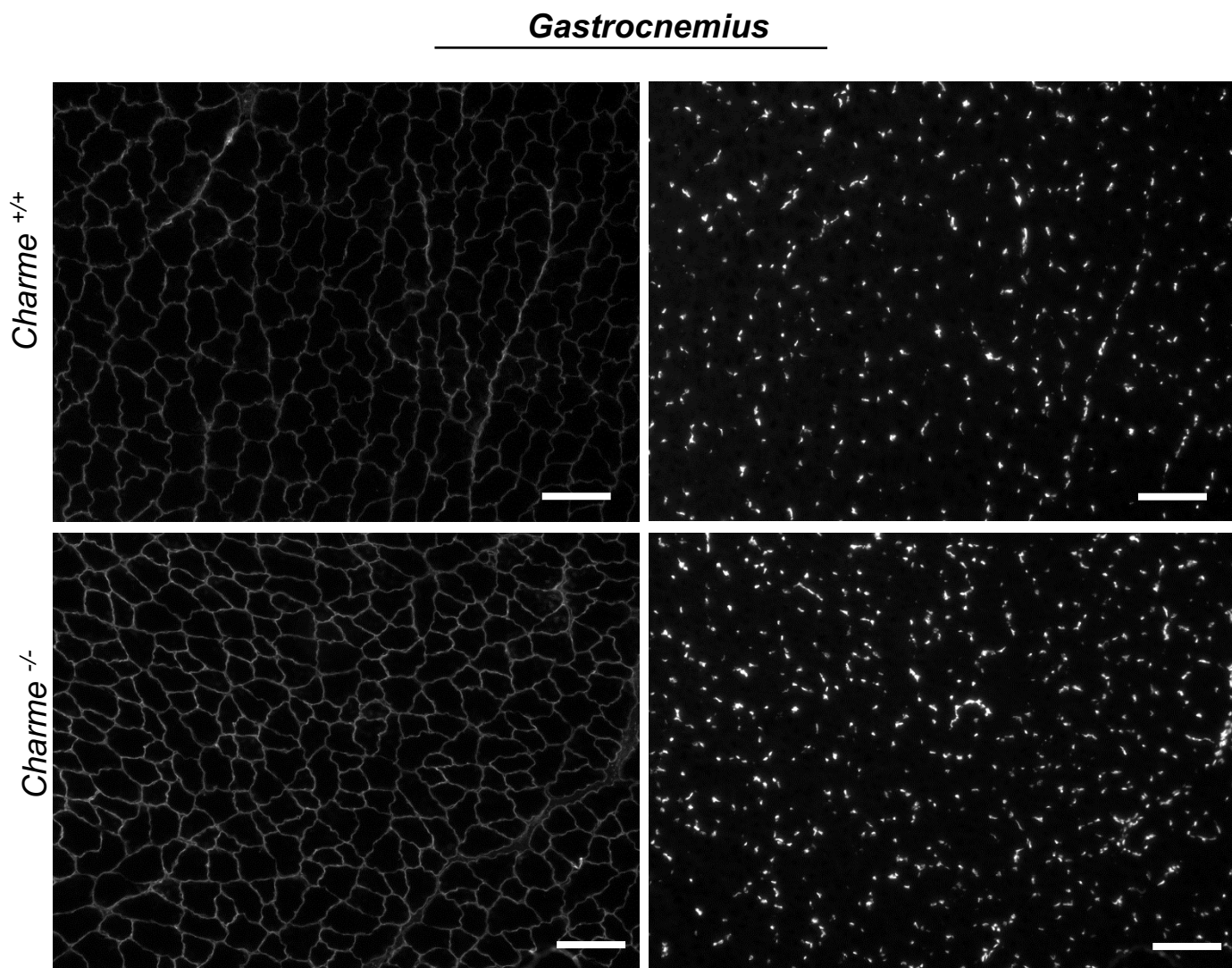


RAW DATA FIGURE 4

Fig 4

Figure 4C



Full size images of immunofluorescence for dystrophin protein and DAPI (4',6-diamidino-2-phenylindole) on *Charme*^{+/+} and *Charme*^{-/-} skeletal gastrocnemius and heart biopsies.

The images were acquired as 8 bit depth by using a Plan-Neofluar EC 10×/0.3 M27 (gastrocnemius) or LD 20×/0.4 Korr (heart) and collected with AxioVision Rel.4.8 software. The entire images were processed in post-acquisition analysis with FIJI software, in contrast and brightness for Dystrophin and DAPI. For both channels, pseudocolor were added and color combine applied. Scale bar = 100 μm.