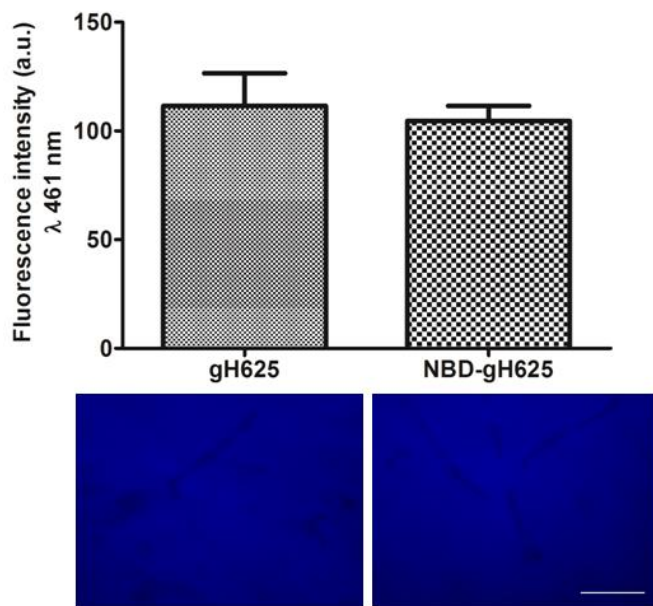


Enhanced uptake of gH625 by blood brain barrier compared to liver *in vivo*: characterization of the mechanism by an *in vitro* model and implications for delivery.

*Annarita Falanga,<sup>1,2</sup> Giuseppina Iachetta,<sup>3</sup> Lucia Lombardi,<sup>1</sup> Emiliana Perillo,<sup>1</sup> Assunta Lombardi,<sup>3</sup> Giancarlo Morelli,<sup>1,2</sup> Salvatore Valiante,<sup>3,4</sup> Stefania Galdiero<sup>1,2\*</sup>*



**Figure S1.** Evaluation of the fluorescence signal on ex vivo brain samples at 461 nm. Images show no difference in signal between gH625 and NBD-gH625 samples. Scale bar 50  $\mu\text{m}$ .