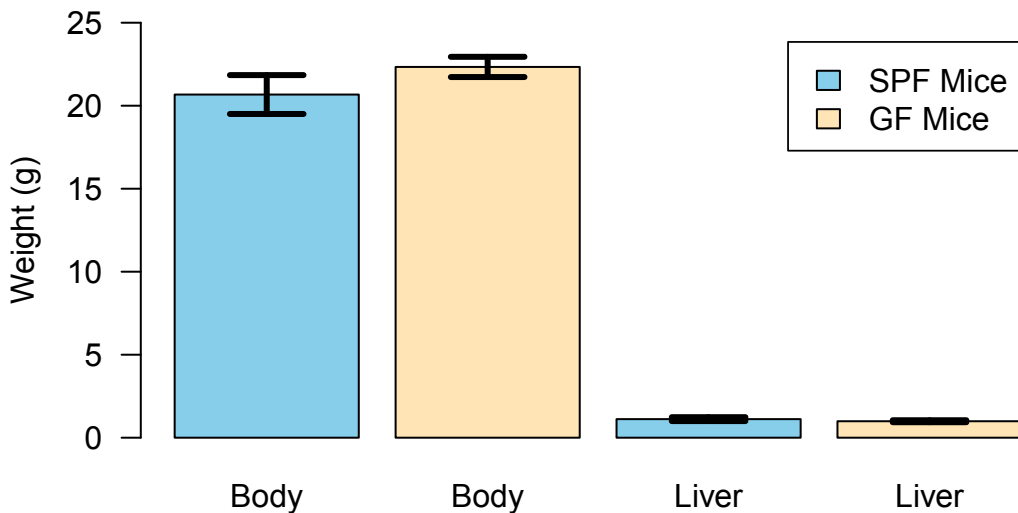
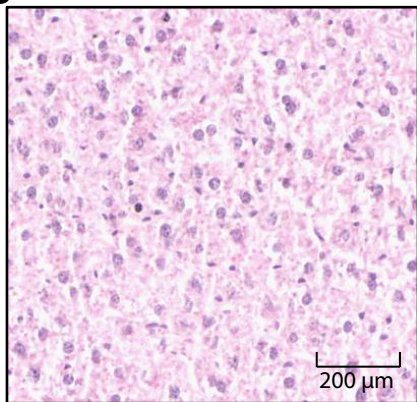
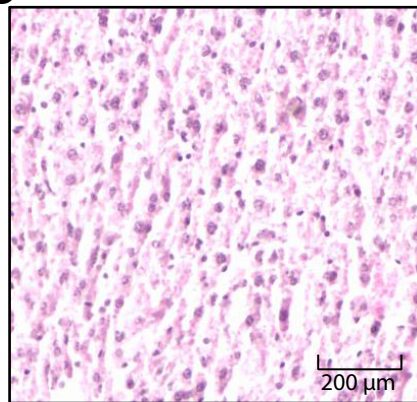
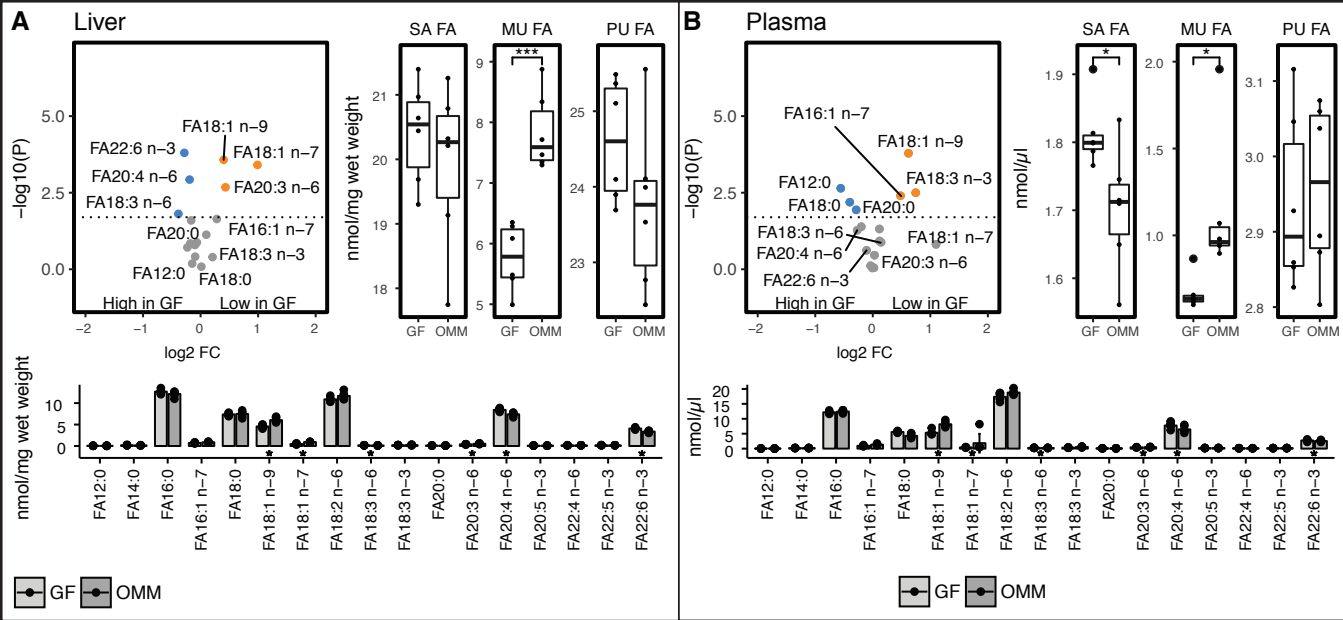
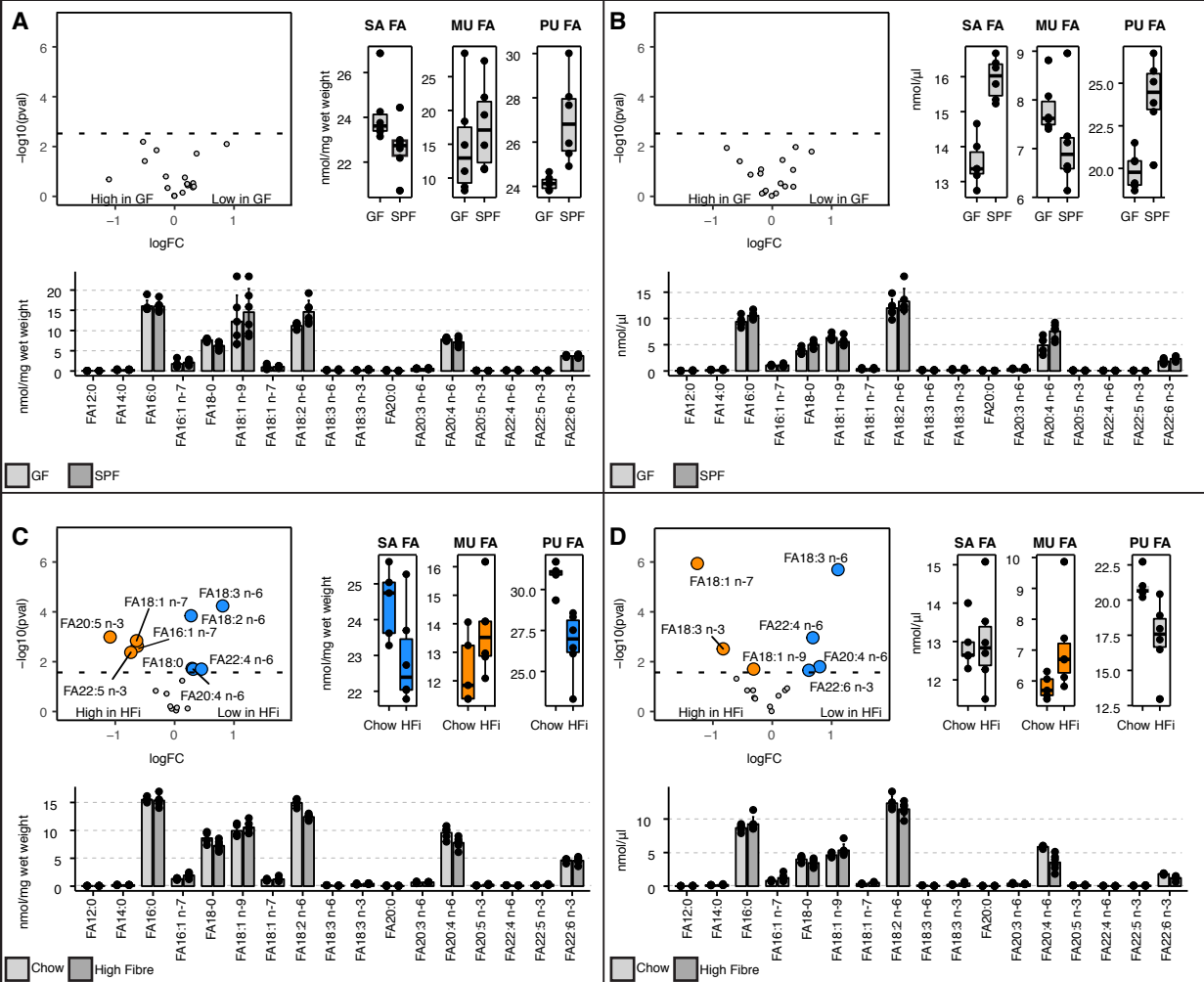


A**B****C**

Supplementary Figure 1: Comparison of body/liver weight and liver histology.(A) Body and liver weight of SPF and GF mice ($n=6/\text{group}$). Representative images of hematoxylin and eosin (HE)-stained liver sections from SPF (B) and GF (C) mice. 20 \times magnification, 10 \times optical zoom. Error bars in the bar plots show the standard deviation.



Supplementary Figure 2: Quantitative FA analyses of liver and plasma samples from GF and Oligo-MM¹² mice. GF and Oligo-MM¹² mice were fed a chow diet (n=6/group). (A) Total FA in liver and (B) plasma. Significance and log₂ fold change in individual FA species shown in volcano plot; boxplots show concentrations of saturated (SA), monounsaturated (MU), and polyunsaturated (PU) FA species; individual FA levels of the different groups as barplots. In boxplots the thick lines represent the medians, the upper and lower lines of the boxes show the 25% and 75% quartiles and the whiskers are 1.5 times the interquartile range of the data. Error bars in the barplots show the standard deviation. FDR, false discovery rate. GF, germfree; OMM, Oligo-MM¹². *p<0.05, **p<0.01, ***p<0.001.



Supplementary Figure 3: Quantitative FA analyses of liver and plasma from mice fed specific diets. GF and SPF mice ($n=6/\text{group}$) were fed an experimental control diet containing purified cellulose (5%) as fiber source for 2 weeks. (A) Total FA in liver and (B) plasma. SPF mice ($n=6/\text{group}$) were fed either a chow diet (5% crude fiber) or a regular diet comparable to chow but with elevated fiber content (14% crude fiber) for 2 weeks. (C) Total FA in liver and (D) plasma. Significance and \log_2 fold change in individual FA species shown in volcano plot; boxplots show concentrations of saturated (SA), monounsaturated (MU), and polyunsaturated (PU) FA species; individual FA levels of the different groups as barplots. In boxplots the thick lines represent the medians, the upper and lower lines of the boxes show the 25% and 75% quartiles and the whiskers are 1.5 times the interquartile range of the data. Ch, chow; FDR, false discovery rate; GF, germfree; HFi, High Fiber; SPF, specific pathogen-free. * $p<0.05$, ** $p<0.01$, *** $p<0.001$.