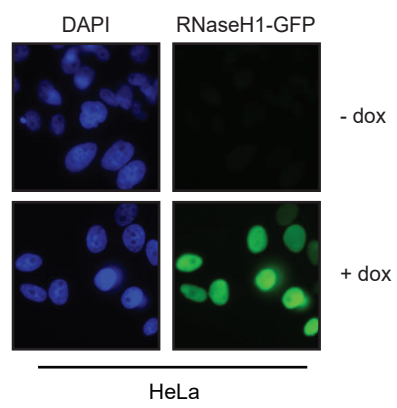
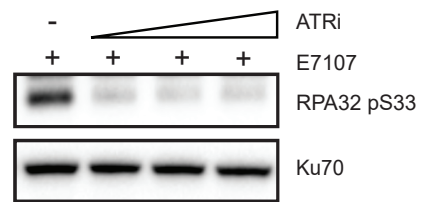


**A**



**B**



**Supplementary Figure S4. RNA splicing perturbation by pharmacologic compounds induce R loop and ATR-mediated RPA32 phosphorylation. (A)** Expression of GFP-tagged RNaseH1 in HeLa cells were induced by the addition of doxycycline (200 ng/mL) for 24h and analyzed by immunostaining using GFP specific antibody. **(B)** HeLa cells were treated with 1 nM E7107 for 24h followed by two-fold dilution of ATRi (1.25 – 5  $\mu$ M) for 1h.