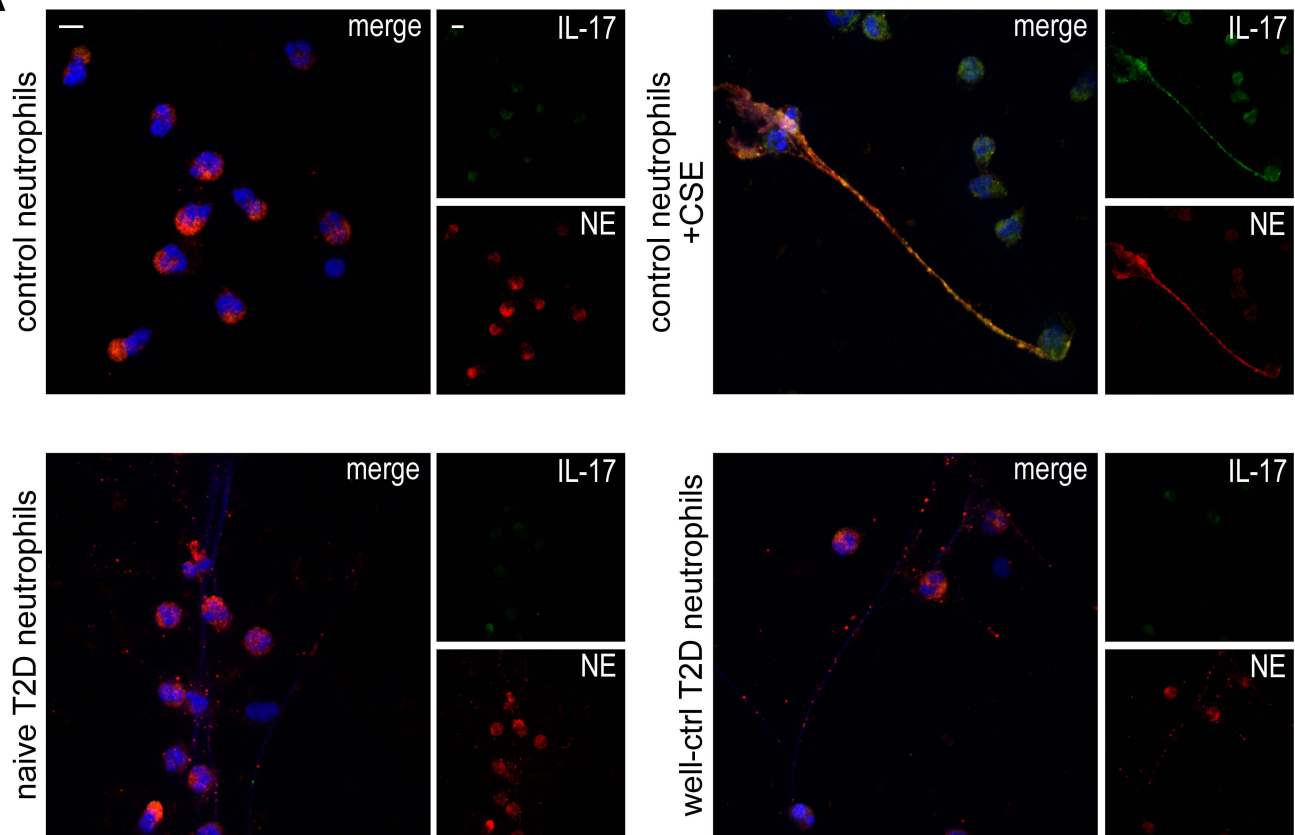
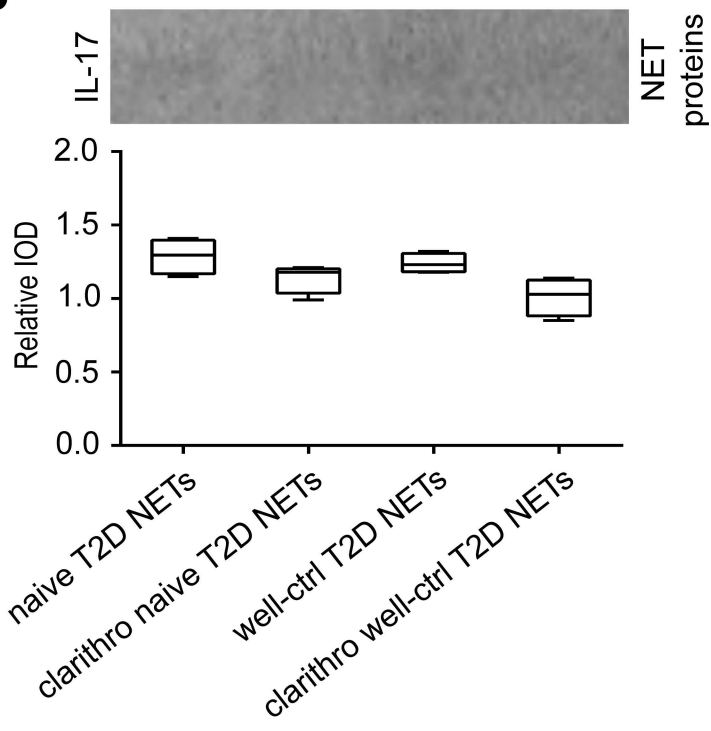


**A****B**

1 **Supplementary figure legend**

2

3 **Supplementary figure S1. T2D NETs are not decorated with IL-17.** (A) Confocal  
4 microscopy for IL-17 / NE staining in neutrophils isolated from treatment-naive and  
5 well-controlled T2D patients. Neutrophils isolated from healthy individuals treated  
6 with cigarette smoke extract (CSE) or not were used as positive and negative controls,  
7 respectively. (B) IL-17 in purified NET proteins derived from NETs from naive and  
8 well-controlled T2D patients generated *in vitro* spontaneously or using  
9 clarithromycin. Relative IOD was calculated compared to control NETs value. (A)  
10 Blue: DAPI, Green: IL-17, Red: NE. One representative out of six independent  
11 experiments is shown. Original magnification: x600, Scale bar – 5µm. (B) Data from  
12 four independent experiments presented in box-and-whiskers plots including  
13 minimum and maximum values as well as median and IQR. Overall KW p-value was  
14 0.0092. IOD – integrated optical density.