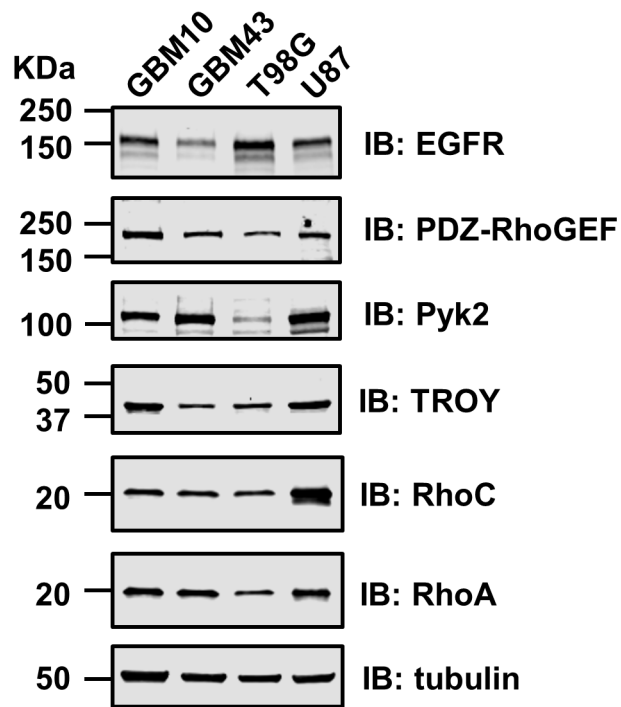


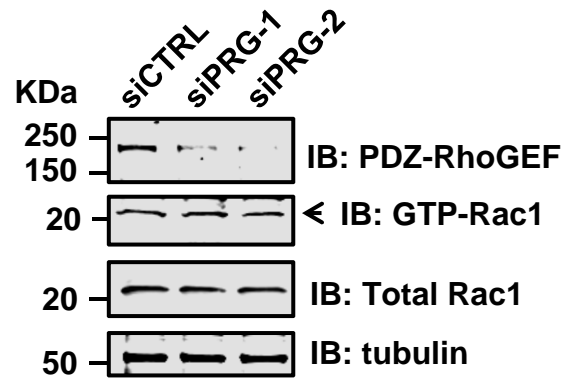
Supplementary Figure 1



Supplementary Figure 1. The expression pattern profile of EGFR, PDZ-RhoGEF, Pyk2, TROY, RhoC and RhoA in GBM10, GBM43, T98G, and U87 cells.

Cell lysates were immunoblotted with the indicated antibodies. α -tubulin was the loading control.

Supplementary Figure 2



Supplementary Figure 2. Knockdown of PDZ-RhoGEF (PRG) does not affect Rac1 activation in T98G cells.

T98G cells were transfected with two different siRNAs targeting PDZ-RhoGEF or a control non-targeting siRNA. Cells were serum starved for 16 h. Cell lysates were harvested and equal amounts of proteins were assessed for Rac1 activation using a Rac1 pull-down activation assay (Pierce, ThermoScientific).