

Supplemental Figures

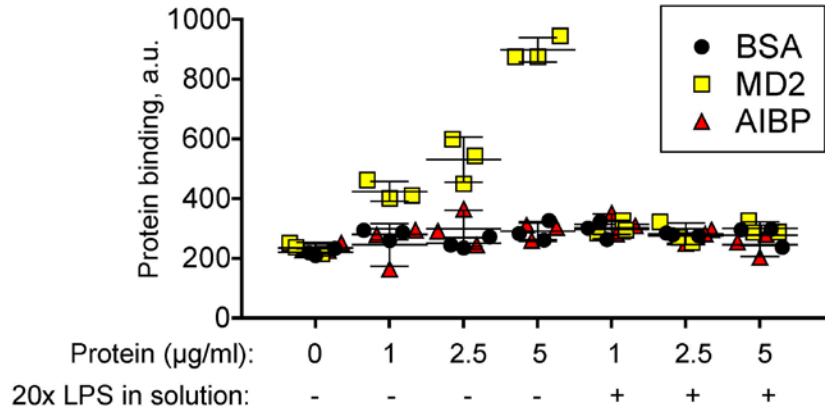


Figure S1. AIBP does not bind LPS. BSA, MD2-His or His-AIBP at 1.0, 2.5 or 5.0 µg/ml (AIBP and MD2 are of approximately equal molecular mass) were added to the plate coated with 50 µl of 1 µg/ml LPS. In some wells, proteins were preincubated with a 20-fold excess of LPS. Protein binding to the wells was detected with an anti-His antibody. Mean±SD; n=3 (technical replicates).

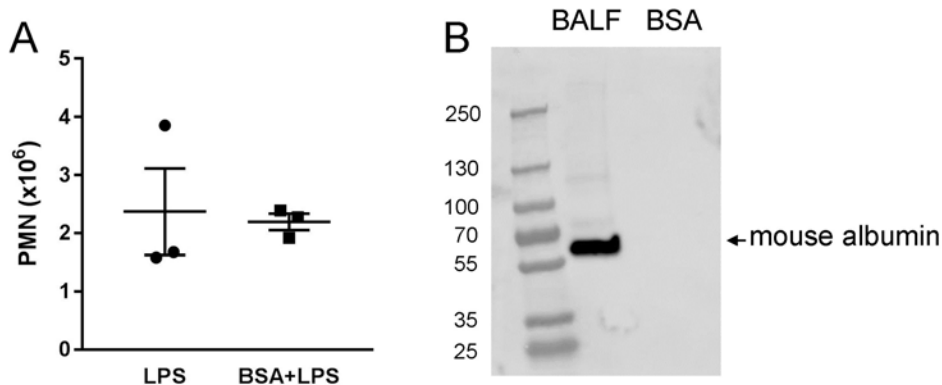


Figure S2. A, Comparison of response to nebulized LPS and LPS+BSA shows no difference in recruitment of neutrophils. Conditions as in Figure 6 B-E. Mean±SD; n=3.

B, Anti-mouse albumin antibody does not cross-react with BSA. BALF from LPS-injured mice (as in Figure 6B-E) and BSA were run in parallel in western blot.