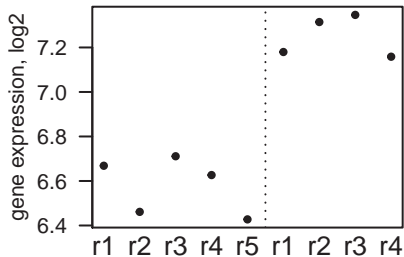


Mid2_predicted

adj.pv=0.0084, fc=1.59

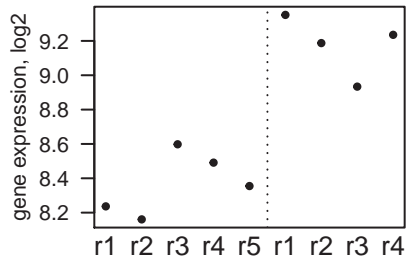
VN6 VN10



Tmem98

adj.pv=0.014, fc=1.75

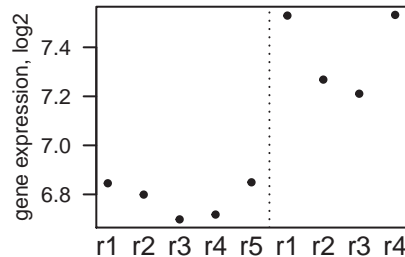
VN6 VN10



Fxyd1

adj.pv=0.014, fc=1.52

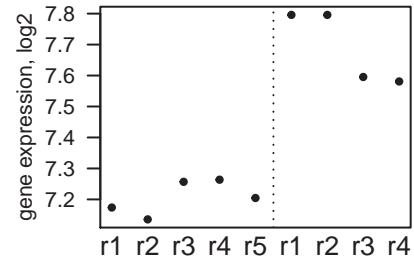
VN6 VN10



Igsf4c_predicted

adj.pv=0.0151, fc=1.4

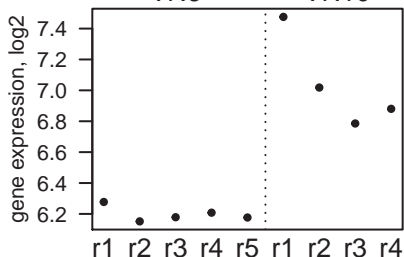
VN6 VN10



RGD1309108_predicted

adj.pv=0.0156, fc=1.79

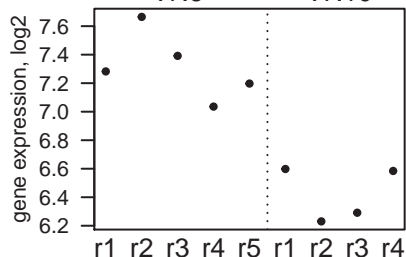
VN6 VN10



Loxl2_predicted

adj.pv=0.0156, fc=0.54

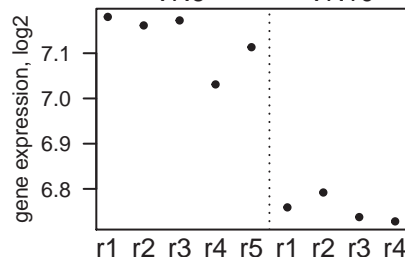
VN6 VN10



Aspm_predicted

adj.pv=0.016, fc=0.77

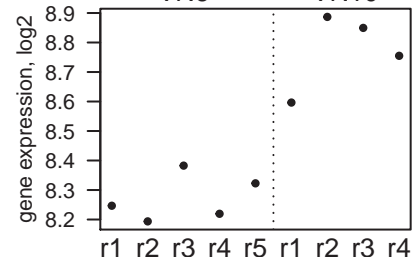
VN6 VN10



Ermp1

adj.pv=0.0172, fc=1.41

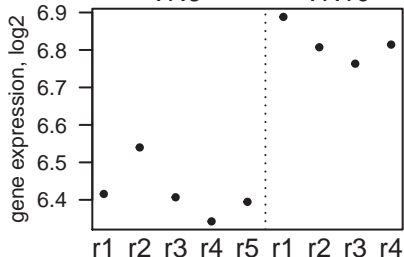
VN6 VN10



Rgs16

adj.pv=0.0175, fc=1.32

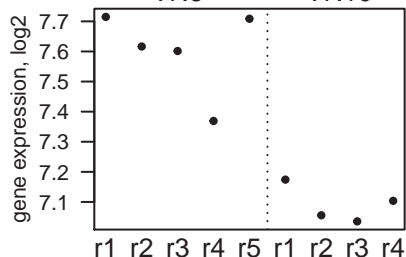
VN6 VN10



Ppil1

adj.pv=0.0194, fc=0.7

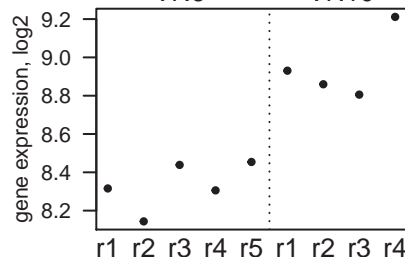
VN6 VN10



Dag1

adj.pv=0.0194, fc=1.54

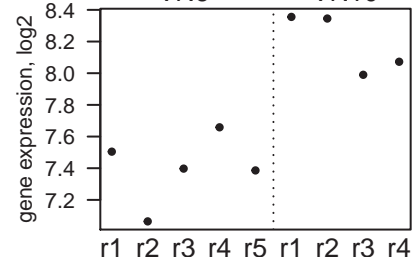
VN6 VN10



Rab33a_predicted

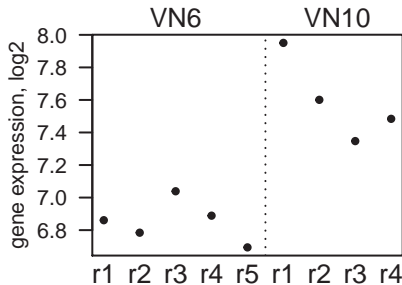
adj.pv=0.02, fc=1.73

VN6 VN10



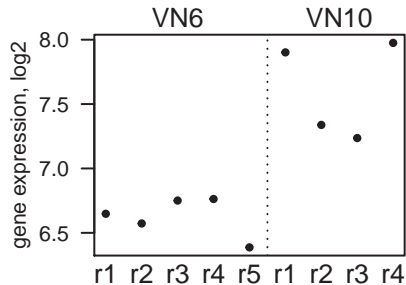
RGD1310680_predicted

adj.pv=0.0213, fc=1.67



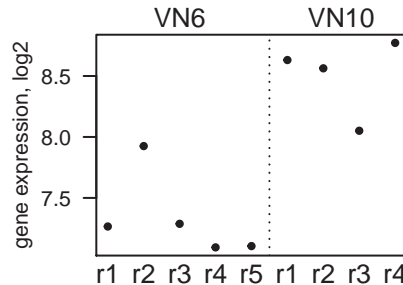
Lgi4

adj.pv=0.0224, fc=1.98



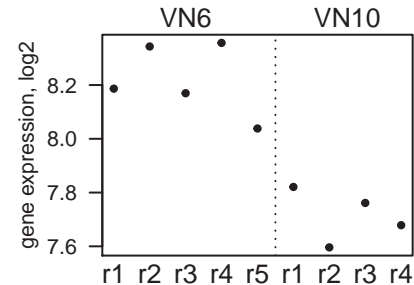
Entpd2

adj.pv=0.0224, fc=2.25



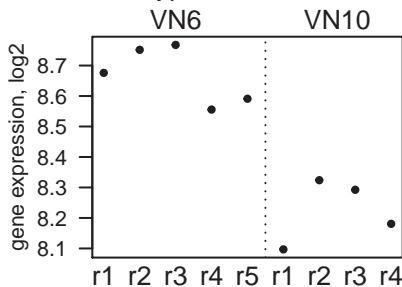
Arfp1

adj.pv=0.0224, fc=0.7



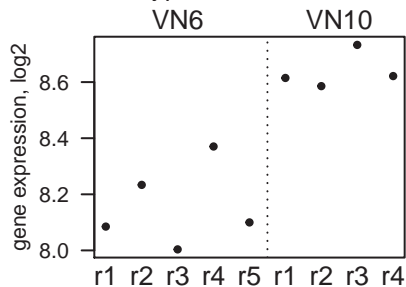
RGD1562608_predicted

adj.pv=0.024, fc=0.73



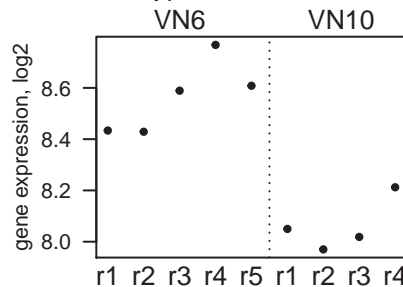
RGD735065

adj.pv=0.0279, fc=1.39



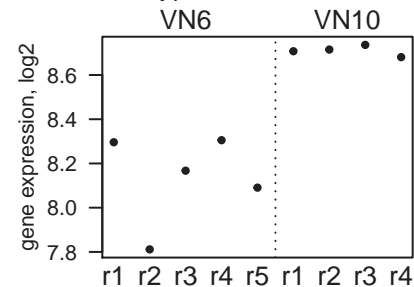
Ddx18

adj.pv=0.0279, fc=0.71



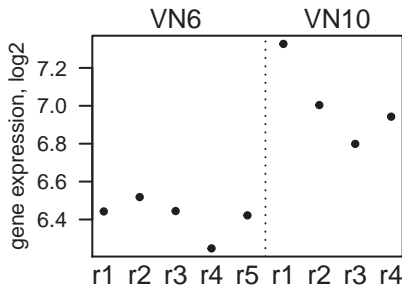
Chn2

adj.pv=0.0279, fc=1.49



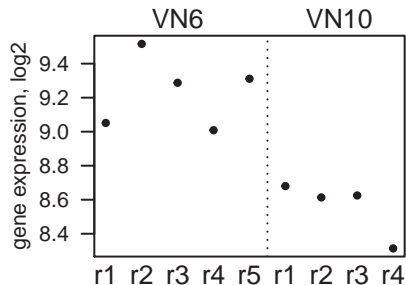
LOC501479

adj.pv=0.0295, fc=1.52



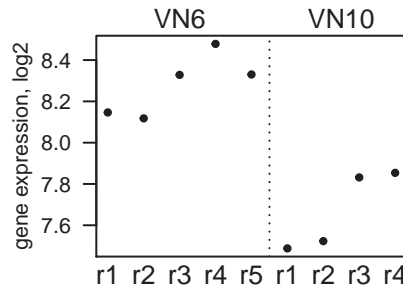
RGD1563633_predicted

adj.pv=0.0298, fc=0.63



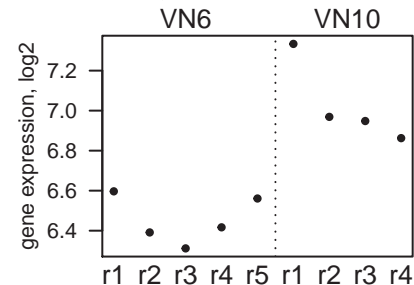
RGD1562451_predicted

adj.pv=0.0326, fc=0.66



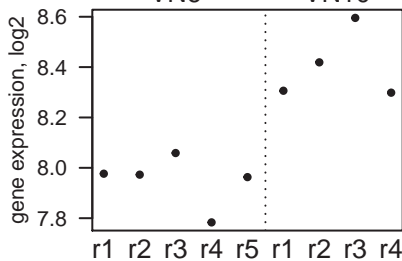
LOC501482

adj.pv=0.0364, fc=1.49

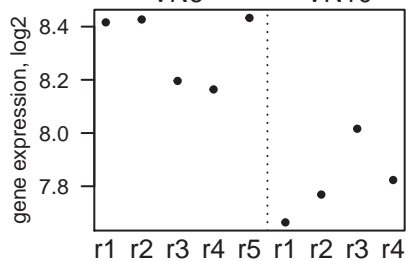


Usp48*adj.pv=0.0364, fc=1.37*

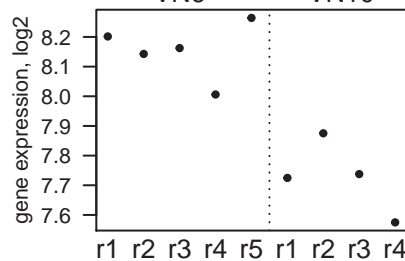
VN6 VN10

**Cndp2***adj.pv=0.0364, fc=0.7*

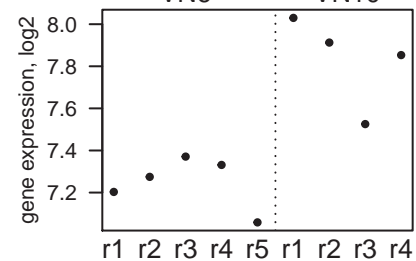
VN6 VN10

**Trps1_predicted***adj.pv=0.0364, fc=0.74*

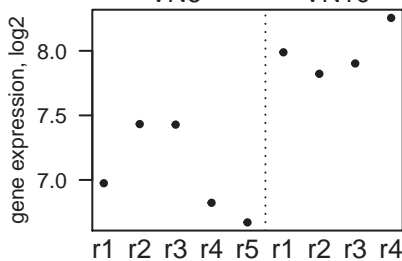
VN6 VN10

**LOC499749***adj.pv=0.0374, fc=1.5*

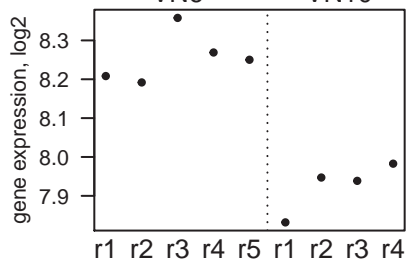
VN6 VN10

**Col5a3***adj.pv=0.0381, fc=1.9*

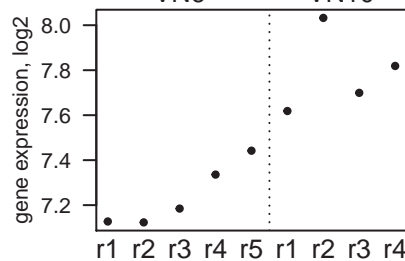
VN6 VN10

**LOC687406***adj.pv=0.0381, fc=0.8*

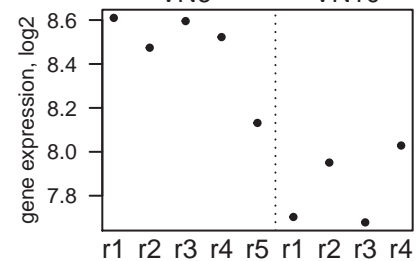
VN6 VN10

**Cdc9111***adj.pv=0.0381, fc=1.46*

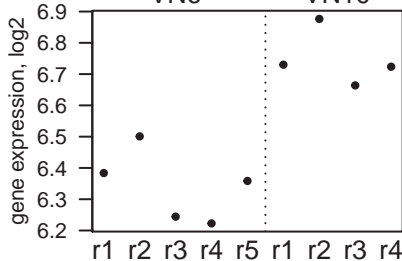
VN6 VN10

**Dclk1***adj.pv=0.0381, fc=0.65*

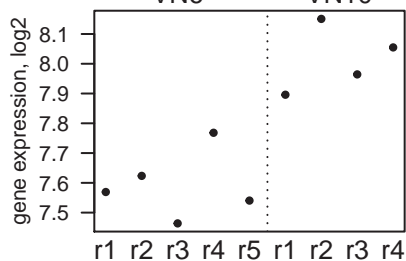
VN6 VN10

**Ascl2***adj.pv=0.0406, fc=1.33*

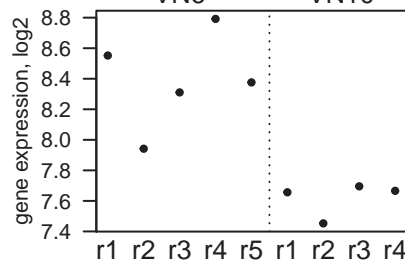
VN6 VN10

**Rad23a***adj.pv=0.0425, fc=1.34*

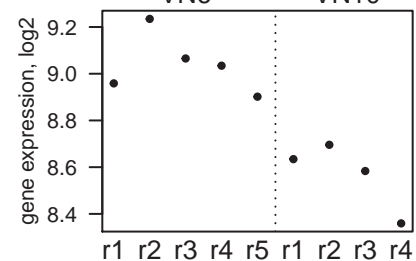
VN6 VN10

**LOC501231***adj.pv=0.0448, fc=0.58*

VN6 VN10

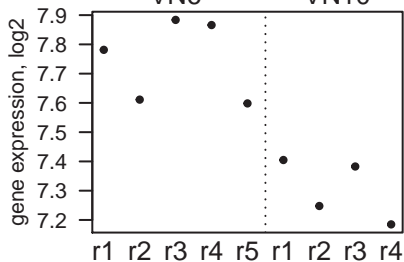
**Prkcb1***adj.pv=0.0474, fc=0.72*

VN6 VN10

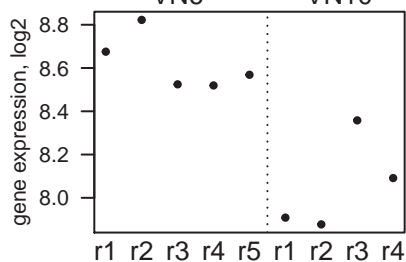


Cbwd1*adj.pv=0.0474, fc=0.74*

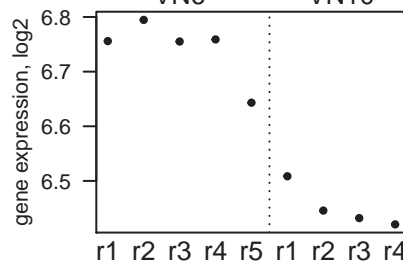
VN6 VN10

**Napg***adj.pv=0.0493, fc=0.68*

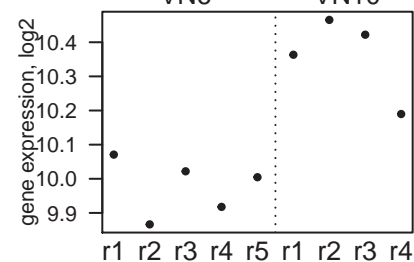
VN6 VN10

**Cnnm1_predicted***adj.pv=0.0498, fc=0.82*

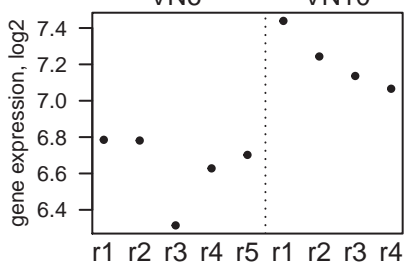
VN6 VN10

**RGD1560248_predicted***adj.pv=0.0498, fc=1.3*

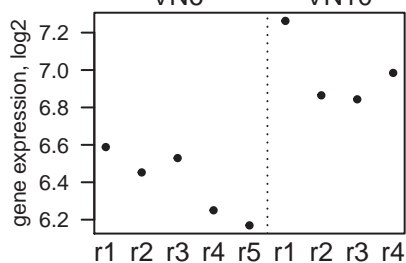
VN6 VN10

**RGD1310509_predicted***adj.pv=0.0498, fc=1.49*

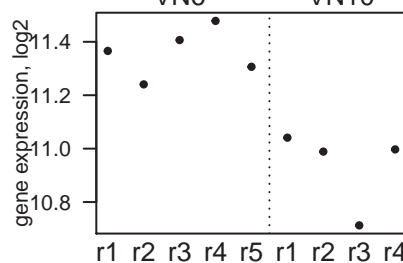
VN6 VN10

**LOC501633***adj.pv=0.0498, fc=1.51*

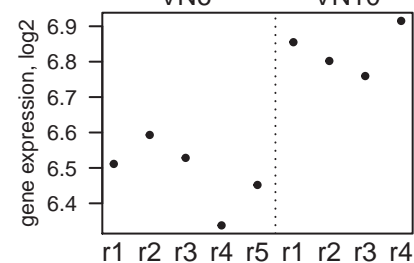
VN6 VN10

**RGD1309427_predicted***adj.pv=0.05, fc=0.75*

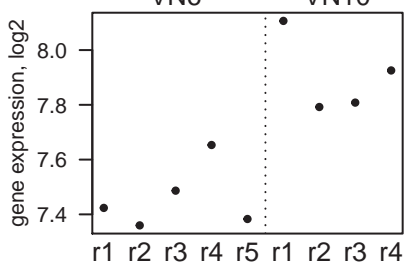
VN6 VN10

**Sox9***adj.pv=0.05, fc=1.27*

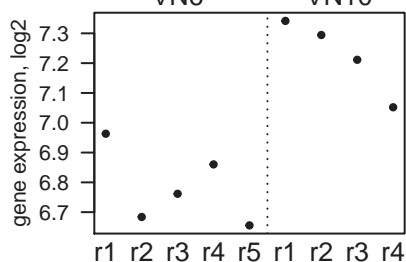
VN6 VN10

**Omg***adj.pv=0.05, fc=1.36*

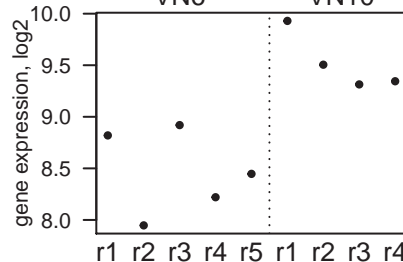
VN6 VN10

**Nmnat1***adj.pv=0.05, fc=1.36*

VN6 VN10

**RGD1306811_predicted***adj.pv=0.05, fc=2.07*

VN6 VN10

**LOC363492***adj.pv=0.05, fc=1.24*

VN6 VN10

