

Figure S8

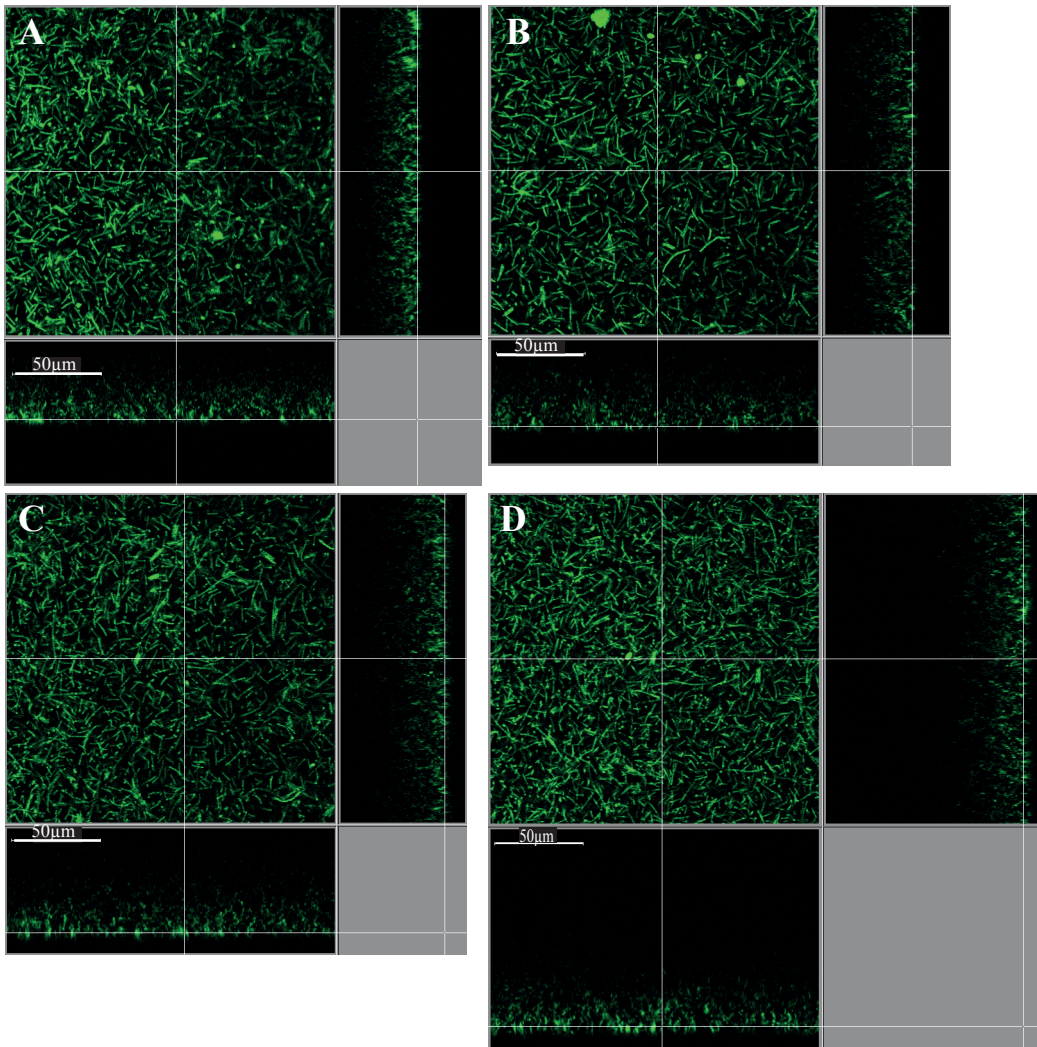


Figure S8. Intact biofilm architecture of *pilA₁* and *CD2831* mutant strains

Biofilm were grown from adhesive starter cells in TYt medium for 24h and in the presence of anhydro-tetracycline inducer as described in Figure 9. Intact biofilm staining and observation by CLMS were as described in Figure 8. A section view close to the surface is shown for the biofilm of each strain, with a white bar indicating the scale (50 μm). The following strains bearing the same empty vector (p) are shown: the parental strain (630 Δerm p; in A and C), *pilA₁* (*pilA₁* p; in B) and *CD2831* mutants (*CD2831* p; in D). After data recovery and quantification of biofilm parameters, a statistical analysis revealed no significant difference between the parental and mutant strains (not shown).