

Supplementary Online Content

Thomas M, Armenti ST, Ayres MB, Demirci H. Uveal effusion after immune checkpoint inhibitor therapy. *JAMA Ophthalmol*. Published online April 12, 2018.
doi:10.1001/jamaophthalmol.2018.0920

eFigure 1. Images from patient #1 at initial presentation (A, C) and following cessation (B, D) of anti-PD-1/PD-L1 therapy.

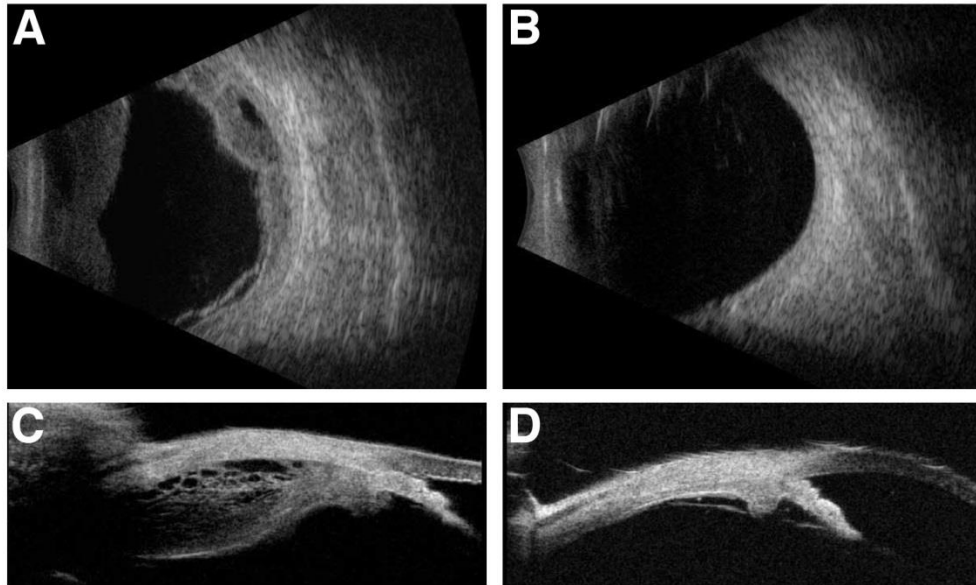
eFigure 2. Images from patient #2.

eFigure 3. Images from patient #2 at presentation (A, C) and after cessation of anti-PD-1/PD-L1 therapy (B, D).

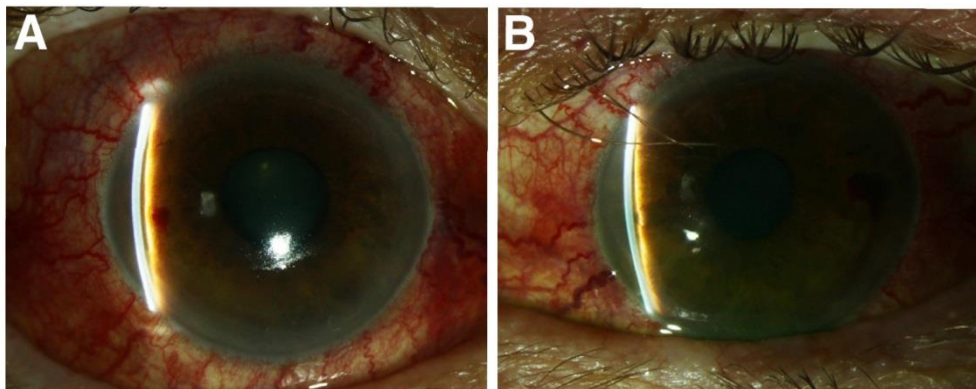
This supplementary material has been provided by the authors to give readers additional information about their work.

Supplemental Material

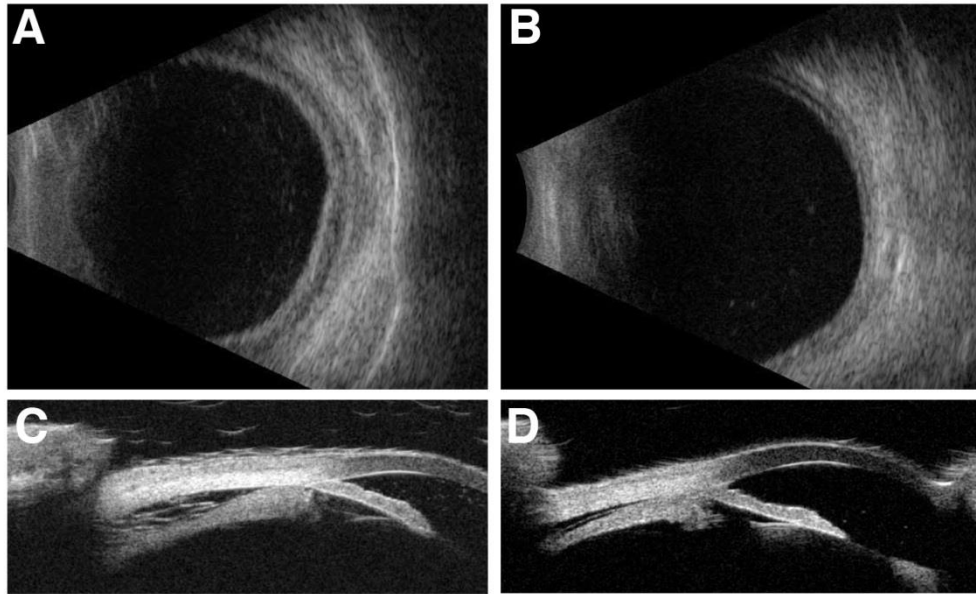
The following document includes three supplemental figures (referred to as eFigure 1-3 in the body of the manuscript) with the corresponding figure legends.



eFigure 1. Images from patient #1 at initial presentation (A, C) and following cessation (B, D) of anti-PD-1/PD-L1 therapy. (A, B) B-scan ultrasonography of the left eye. Note choroidal effusion with inferior shallow exudative retinal detachment in the left eye (A) that resolves after agent cessation (B). (C, D) UBM of the left eye. Note ciliochoroidal effusions (C) that resolve after agent cessation (D).



eFigure 2. Images from patient #2. (A, B) Slit lamp photography of the right (A) and left (B) eyes. Note diffuse conjunctival injection and shallow anterior chambers.



eFigure 3. Images from patient #2 at presentation (A, C) and after cessation of anti-PD-1/PD-L1 therapy (B, D). (A, B) B-scan ultrasonography of the right eye. (C, D) Anterior segment ultrasound of the right eye.