

## Supplementary Online Content

Wattamwar K, Qian ZJ, Otter J, et al. Association of cardiovascular comorbidities with hearing loss in the older old. *JAMA Otolaryngol Head Neck Surg*. Published online June 14, 2018. doi:10.1001/jamaoto.2018.0643

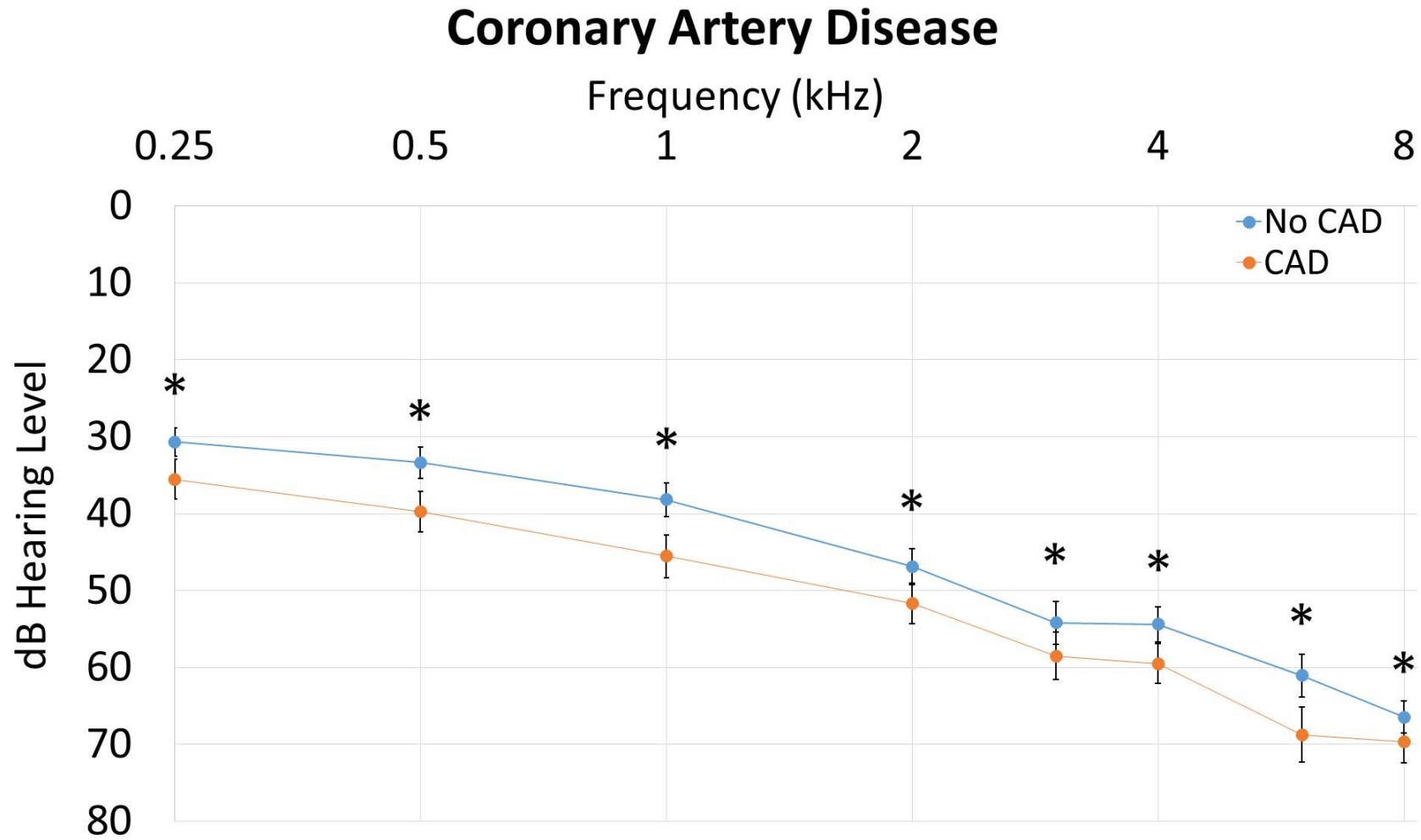
- eFigure 1.** Effect of CAD on hearing
- eFigure 2.** Effect of DM on hearing
- eFigure 3.** Effect of CVA on hearing
- eFigure 4.** Effect of hypertension on hearing
- eFigure 5.** Effect of smoking on hearing

This supplementary material has been provided by the authors to give readers additional information about their work.

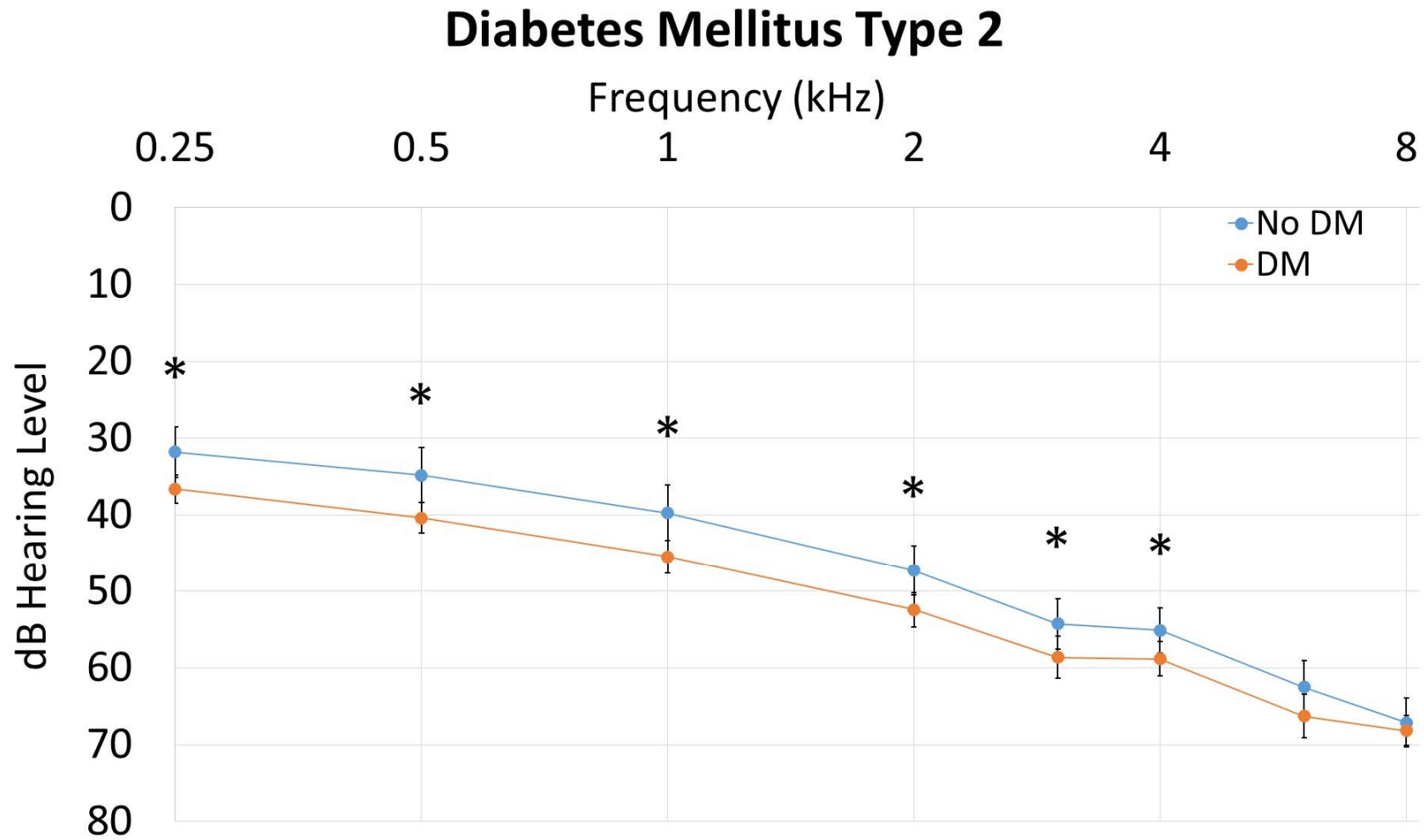
## Online-Only Figures: Impact of each cardiovascular comorbidity on hearing.

- eFigure 1. Effect of CAD on hearing.** Subjects with CAD demonstrated higher thresholds at all frequencies tested compared to those without CAD by the following differences and 95% confidence intervals: 0.25 kHz: 4.86 (1.79, 7.94), 0.5 kHz: 6.41 (3.10, 9.73), 1 kHz: 7.38 (3.85, 10.91), 2 kHz: 4.81 (1.19, 8.44), 3 kHz: 4.32 (0.07, 8.56), 4 kHz: 5.08 (1.55, 8.62), 6 kHz: 7.71 (3.21, 12.22), 8 kHz: 3.14 (0.04, 6.24).
- eFigure 2. Effect of DM on hearing.** Subjects with DM demonstrated higher thresholds at all frequencies tested compared to those without DM by the following differences and 95% confidence intervals: 0.25 kHz: 4.80 (1.25, 8.35), 0.5 kHz: 5.58 (1.73, 9.43), 1 kHz: 5.74 (1.70, 9.78), 2 kHz: 5.15 (1.12, 9.18), 3 kHz: 4.36 (0.11, 8.61), 4 kHz: 3.70 (0.08, 7.32), 6 kHz: 3.77 (-1.02, 8.55), 8 kHz: 1.05 (-2.62, 4.71).
- eFigure 3. Effect of CVA on hearing.** Subjects with CVA demonstrated higher thresholds at all frequencies tested compared to those without CVA by the following differences and 95% confidence intervals: 0.25 kHz: 4.67 (0.38, 8.95), 0.5 kHz: 5.73 (1.04, 10.41), 1 kHz: 6.55 (1.60, 11.51), 2 kHz: 3.52 (-1.56, 8.61), 3 kHz: 2.34 (-3.46, 8.15), 4 kHz: 1.31 (-3.68, 6.30), 6 kHz: 1.59 (-4.96, 8.14), 8 kHz: 3.19 (-1.45, 7.83).
- eFigure 4. Effect of hypertension on hearing.** Subjects with HTN demonstrated higher thresholds at most frequencies tested compared to those without HTN by the following differences and 95% confidence intervals: 0.25 kHz: 3.12 (-0.58, 6.82), 0.5 kHz: 3.37 (0.04, 6.70), 1 kHz: 3.86 (0.09, 7.63), 2 kHz: 2.54 (-1.47, 6.55), 3 kHz: -0.86 (-5.76, 4.05), 4 kHz: 1.09 (-2.80, 4.98), 6 kHz: 1.72 (-3.46, 6.90), 8 kHz: -0.08 (-3.78, 3.63).
- eFigure 5. Effect of smoking on hearing.** Thresholds between smokers and non-smokers differed by the following magnitudes and 95% confidence intervals: 0.25 kHz: 0.83 (-4.49, 6.15), 0.5 kHz: 2.01 (-3.46, 7.48), 1 kHz: 0.59 (-5.00, 6.17), 2 kHz: -0.20 (-5.41, 5.01), 3 kHz: 0.42 (-4.84, 5.69), 4 kHz: -1.96 (-6.82, 2.90), 6 kHz: -2.05 (-7.99, 3.89), 8 kHz: 0.47 (-4.08, 5.02).

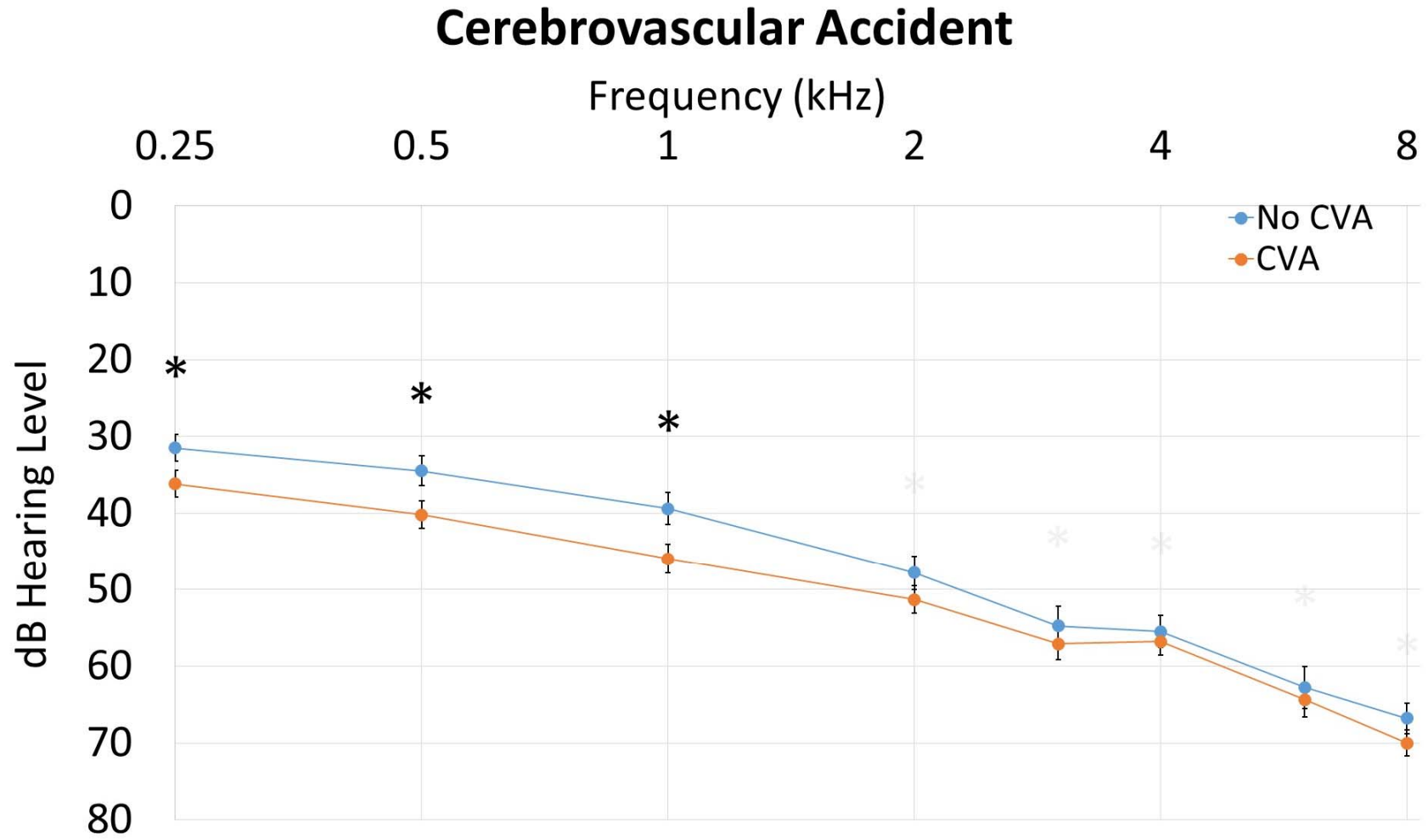
eFigure 1



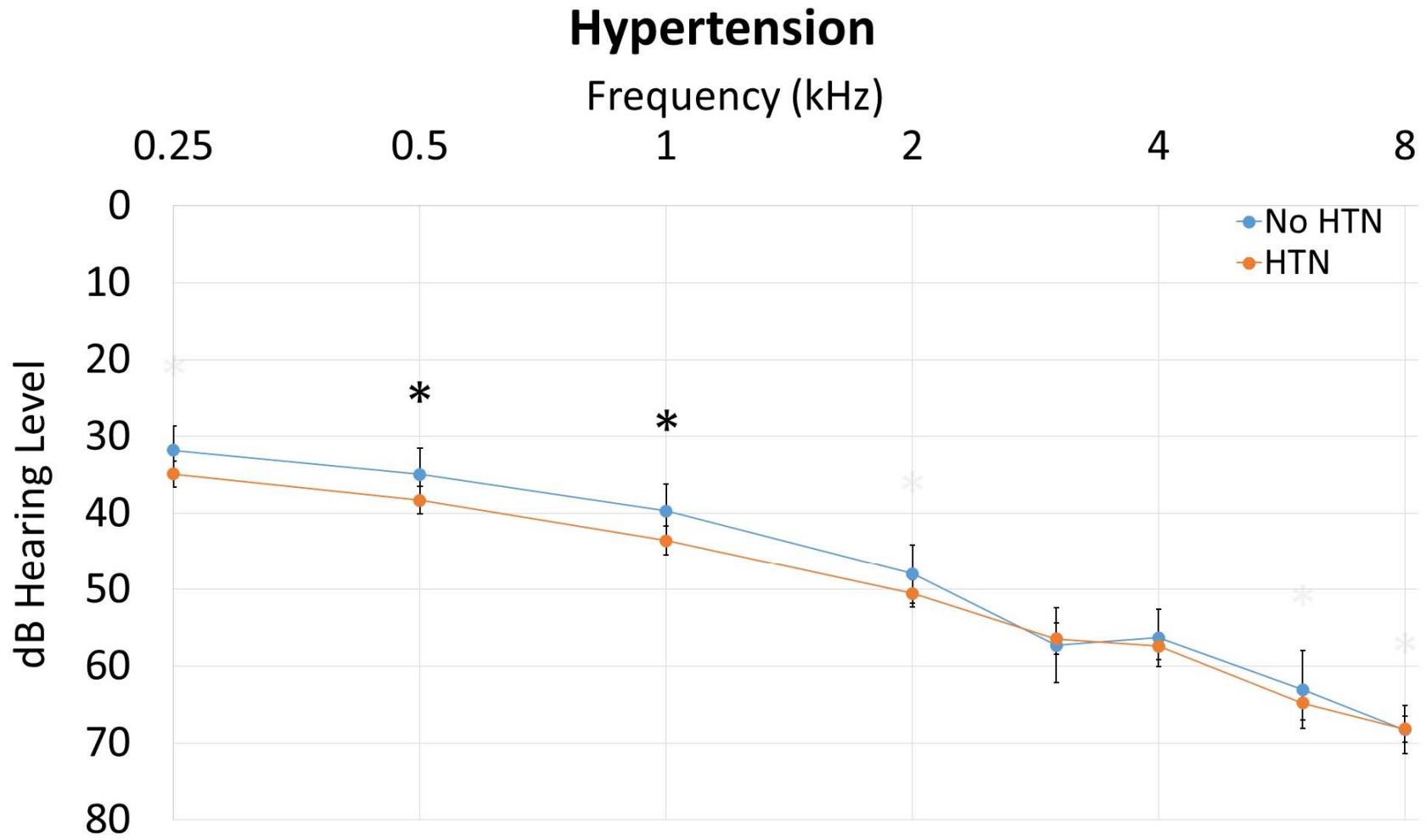
eFigure 2



eFigure 3



eFigure 4



eFigure 5

