

**Salicylic acid in *Populus tomentosa* is a remote signalling molecule induced by
the *Botryosphaeria dothidea* infection**

Yong-xia Li^{1,2}✉, Wei Zhang^{1,2}✉, Hui-xia Dong^{1,3}, Zhen-yu Liu^{2,4}, Jian Ma^{1,2}, Xing-yao Zhang^{1,2}

¹Lab. of Forest Pathogen Integrated Biology, Research Institute of Forestry New Technology, Chinese Academy of Forestry, Beijing 100091, China

²Co-Innovation Center for Sustainable Forestry in Southern China, Nanjing Forestry University, Nanjing 210037, China

³College of Life Science, Henan Normal University, Xinxiang 453007, China

⁴College of Plant Protection, Shandong Agricultural University, Tai'an 271018, China

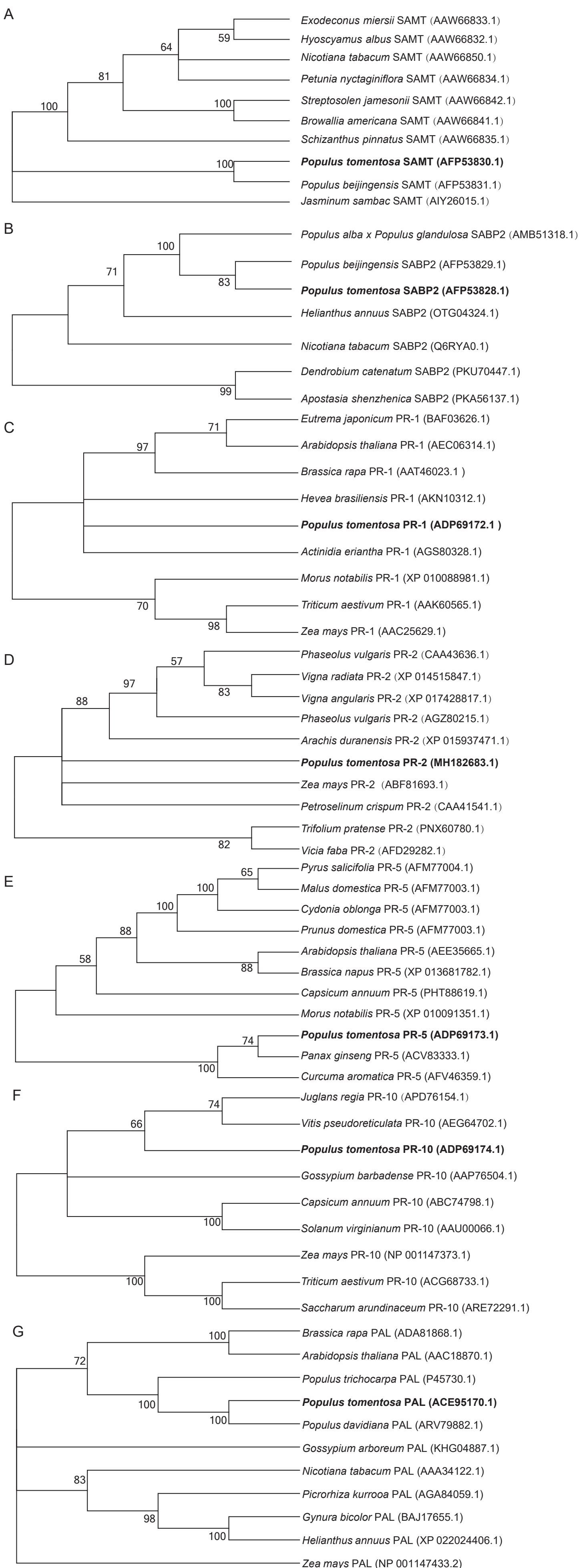


Fig. S1 Phylogenetic trees of PtoSMT, PtoSABP2, PtoPR-1, PtoPR-2, PtoPR-5 and PtoPR-10. PtoSMT (GeneBank No. JQ086572) and PtoSABP2 (GeneBank No. JQ086570) sequences were submitted by us. Other sequences were from NCBI.

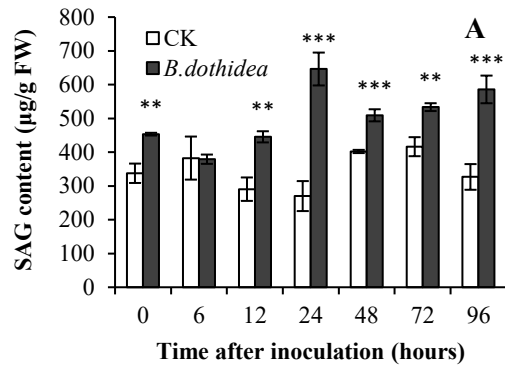


Fig. S2 Liquid chromatography of SAG in *P. tomentosa* after *B. dothidea* inoculation. SAG, SA glucoside (a storage form of SA). □, CK (control) inoculation with culture-medium; ■, inoculation with *B. dothidea*. Infected sites were 5 mm around the inoculation sites and uninfected sites were 10 cm away from inoculation sites. Error bars represent SEM. P values for differences between inoculation with *B. dothidea* and control: * $P < 0.05$, ** $P < 0.01$ and *** $P < 0.001$ (Independent-samples T test).

Table S1 Primer sequences for the qRT-PCR analysis of *SAMT*, *SABP2*, and PR genes in *P. tomentosa* following inoculation with *B. dothidea*.

Target gene	GenBank No.	Forward primer sequence (5'–3')	Reverse primer sequence (5'–3')
<i>SABP2</i>	JQ086570	GTTTGAGTTTGGCTCTTGCT	TGTGGTATCTGGCATGAAAG
<i>SAMT</i>	JQ086572	CAGCACAAGTCCACCAAGCGT	TTGAGAGCCACAGCCAAAAGC
PR-1	HM589199	GCTATAACAATCCCTCTATCCCTT	CCACACAATATTTCCAACACCTAC
PR-2	MH182683	TACCAATGACTGGGAGGAGCAC	AAGACACGGCGGACATAGAGC
PR-5	HM589200	ATCGTTGTTTCCCTGCTTCC	AAATTGCACTTGGTCCGTCC
PR-10	HM589201	ATGAGTTTTCTGTCGCTGTCCC	ACCTTCCTTATTGTTCCCTGGCC
PAL	EU760386	TGAAGAAATAAGTCCCAACGAGT	TCAAAGGAGCTGAAATAGCAATG
β -Tubulin	MH173049	GCACCAACTTGTTGAGAATGC	TTTCAACTGACCAGGGAACC