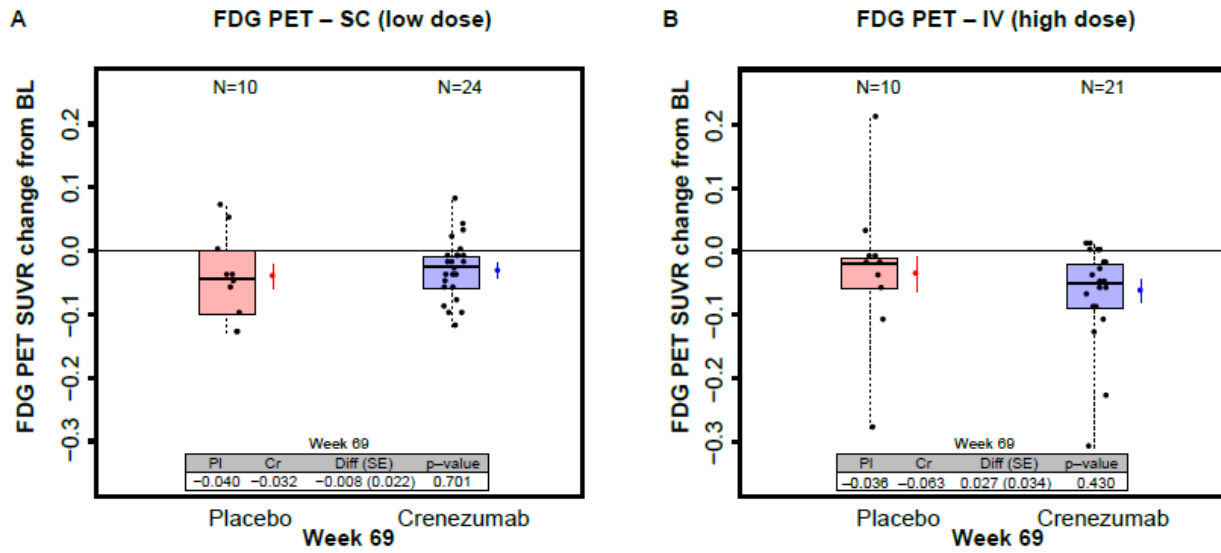


**Fig. S3** FDG PET

FDG PET SUVR change from baseline in the low-dose SC (A) and high-dose IV (B) cohorts.



*Cr* crenezumab; *Diff* difference; *FDG* fluorodeoxyglucose ( $^{18}\text{F}$ ); *IV* intravenous; *PET* positron emission tomography; *PI* placebo; *SC* subcutaneous; *SE* standard error