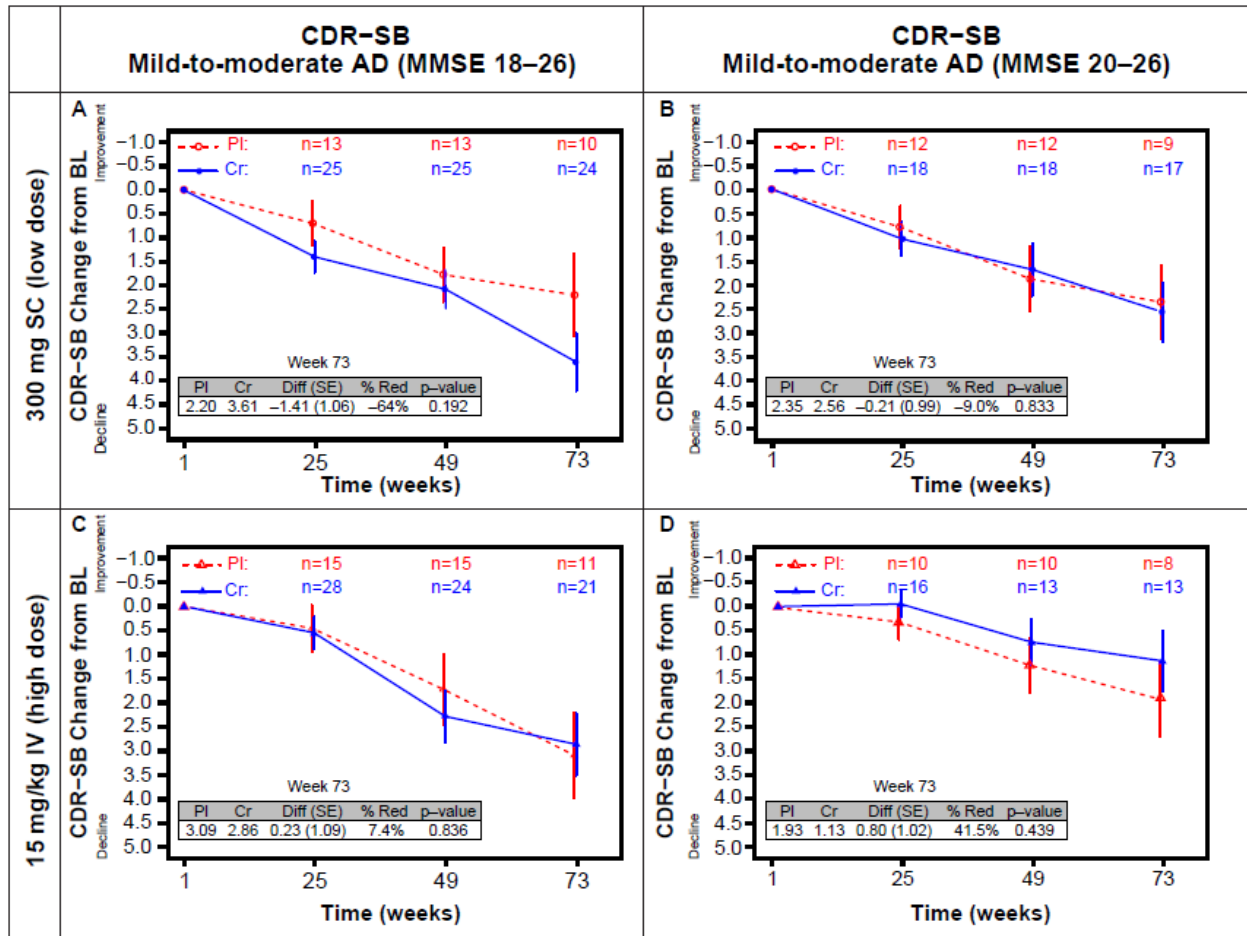


Fig. S5 CDR-SB

Change from baseline (BL) of CDR-SB score in patients with mild-to-moderate AD (A and C) or mild AD (B and D) in the low-dose SC (A and B) and high-dose IV (C and D) cohorts.



% Red percentage reduction; AD Alzheimer's disease; BL baseline; CDR-SB Clinical Dementia Rating-Sum of Boxes; Cr crenesumab; Diff difference; IV intravenous; MMSE Mini-Mental State Examination; PI placebo; SC subcutaneous; SE standard error