

Figure S1. The genes may be acquired by the event of horizontal gene transfer in *Cardinium* cSfur

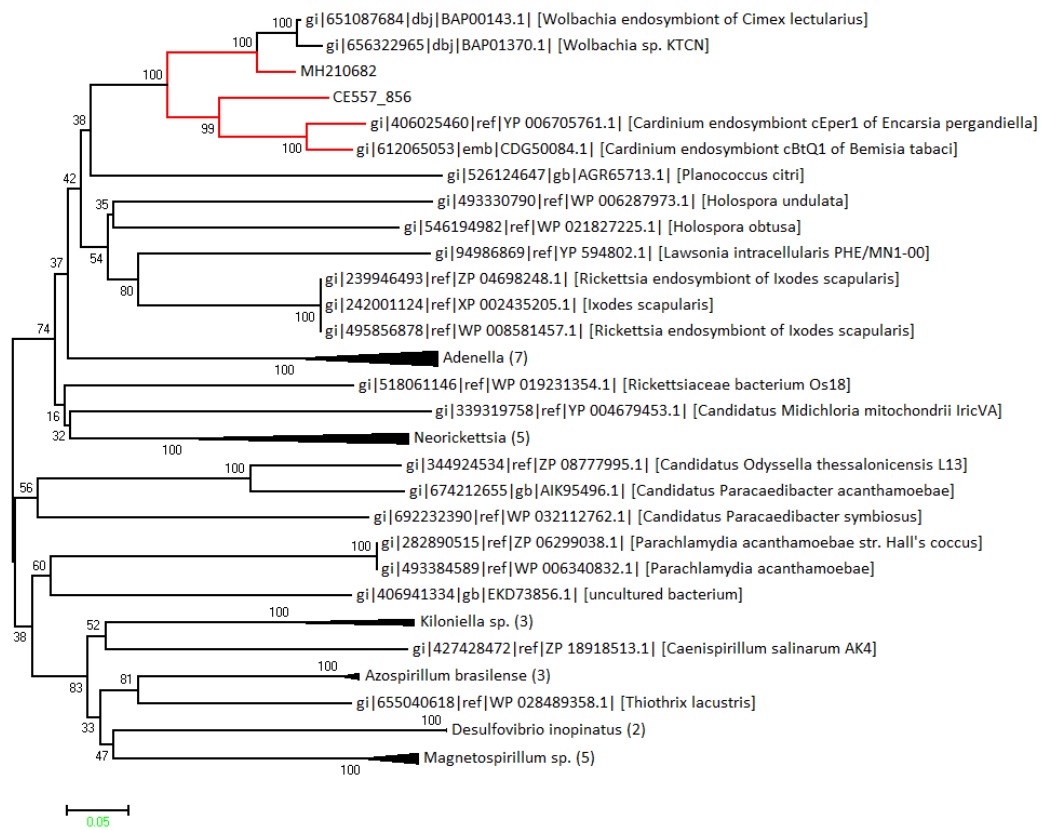
A-F: Biotin synthesis genes

G-I: Glycolysis related genes

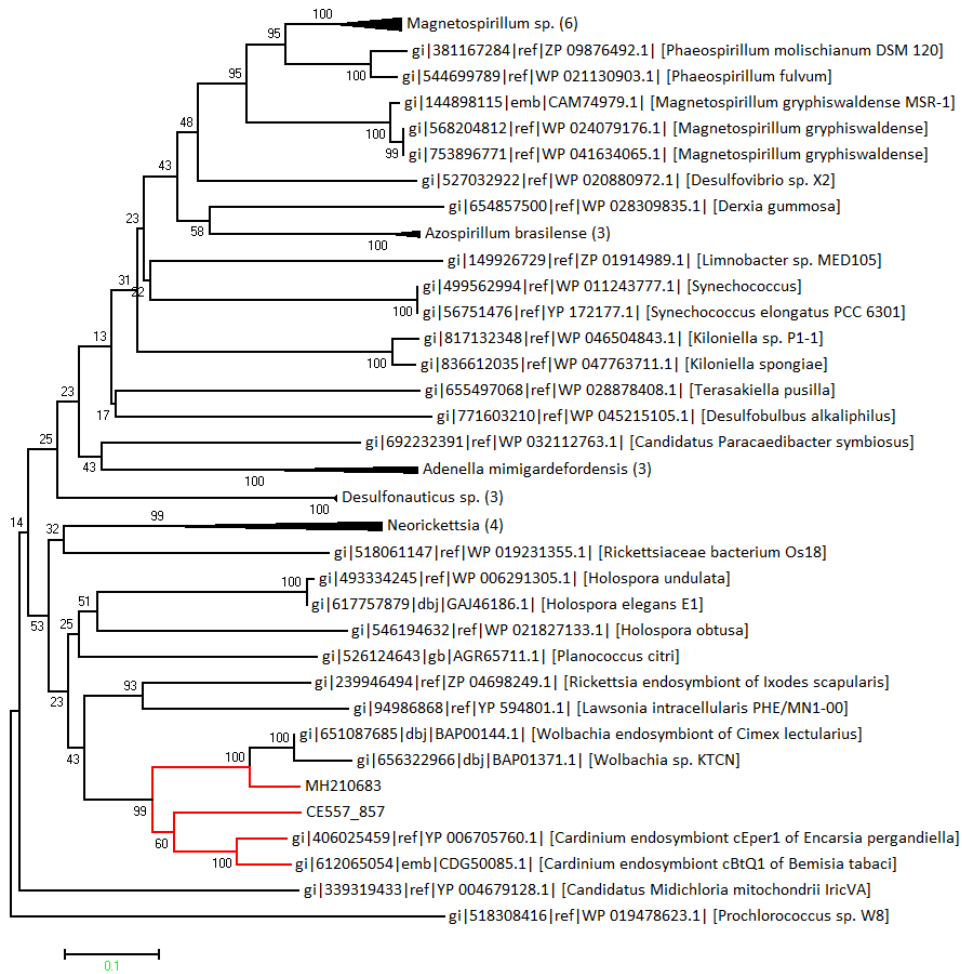
J-W: Other non-transposase encoding genes

AA-AH: Transposase encoding genes

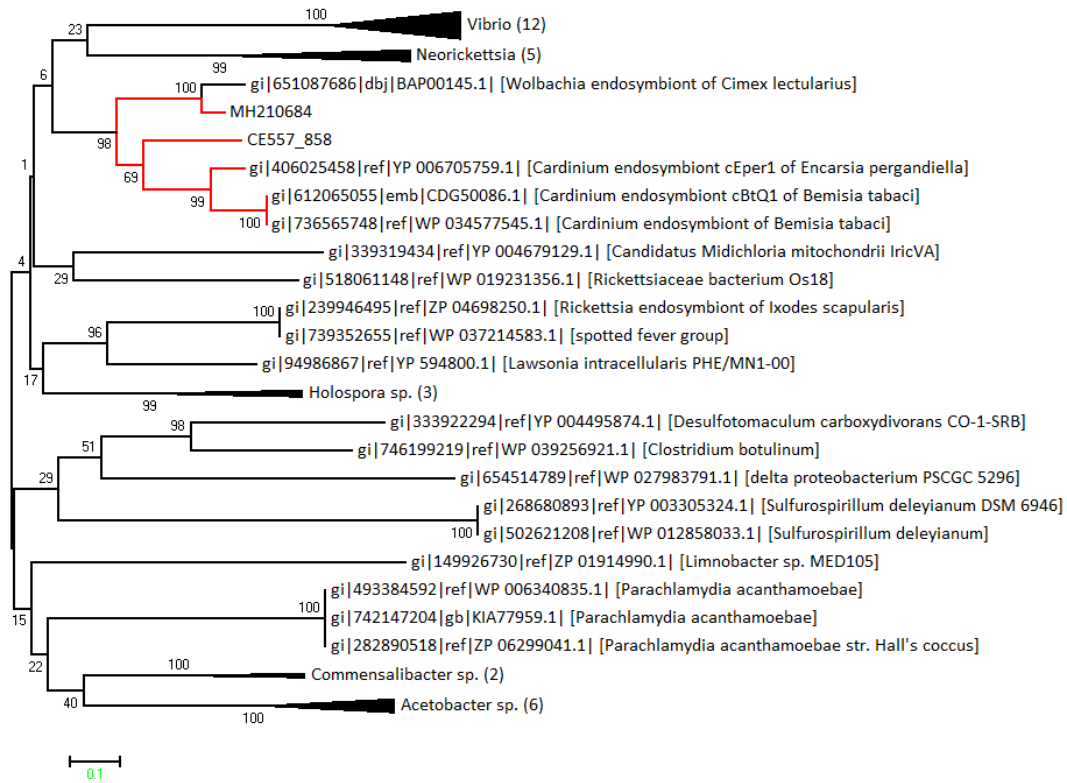
A: CE557_856 (bioA: adenosylmethionine-8-amino-7-oxononanoate transaminase)



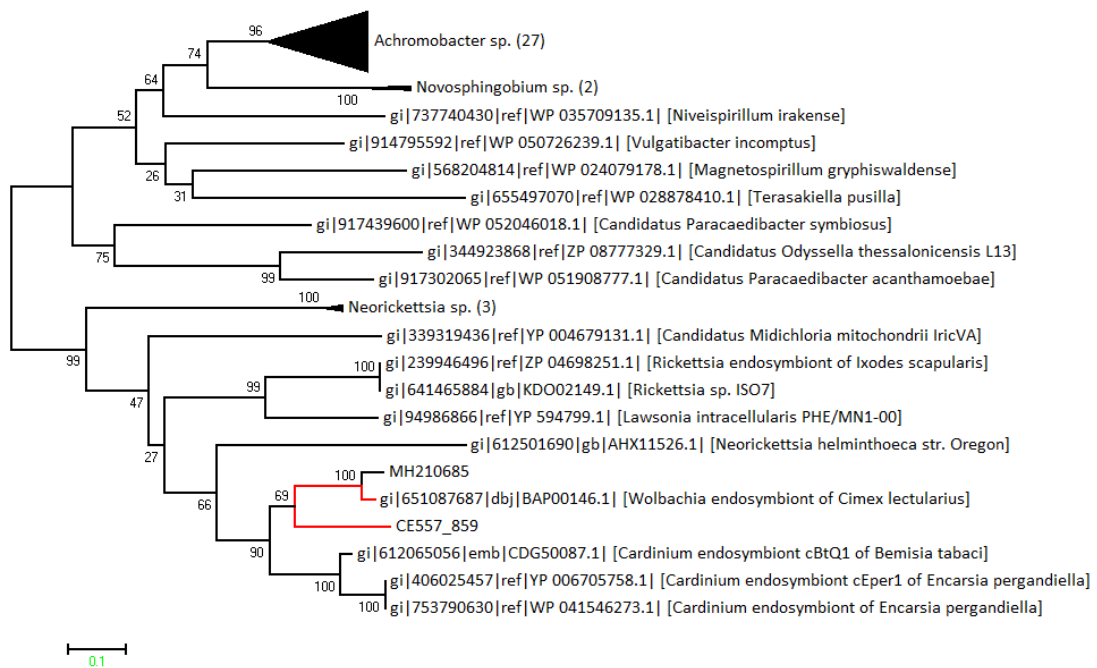
B: CE557_857 (bioD: dethiobiotin synthase)



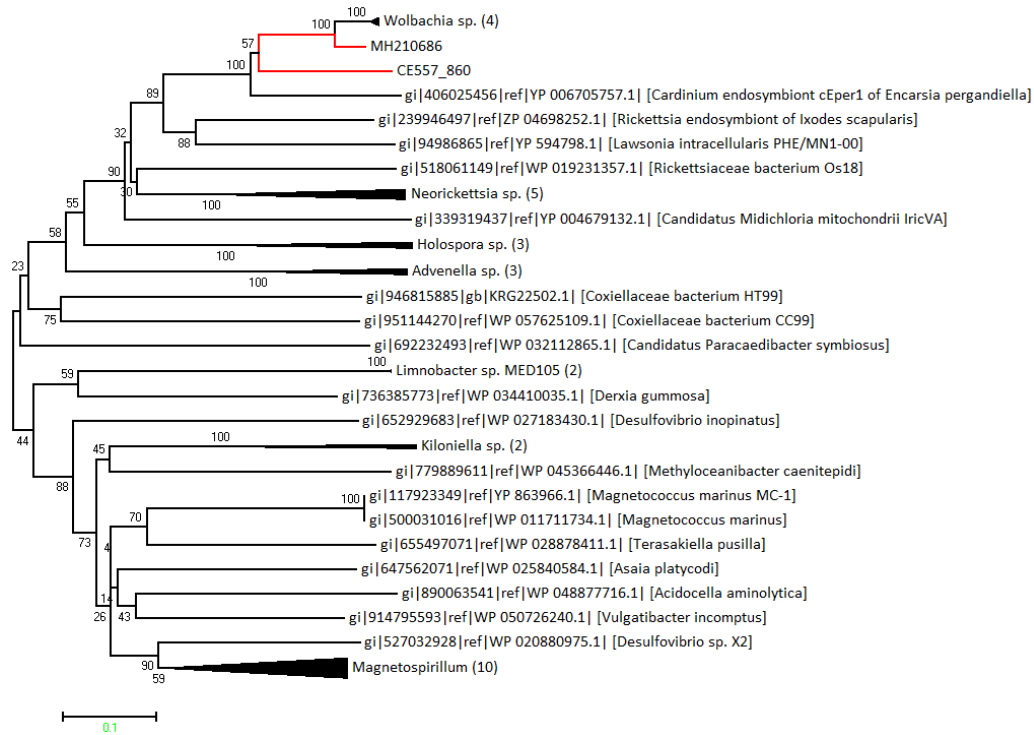
C: CE557_858 (bioC: malonyl-CoA O-methyltransferase)



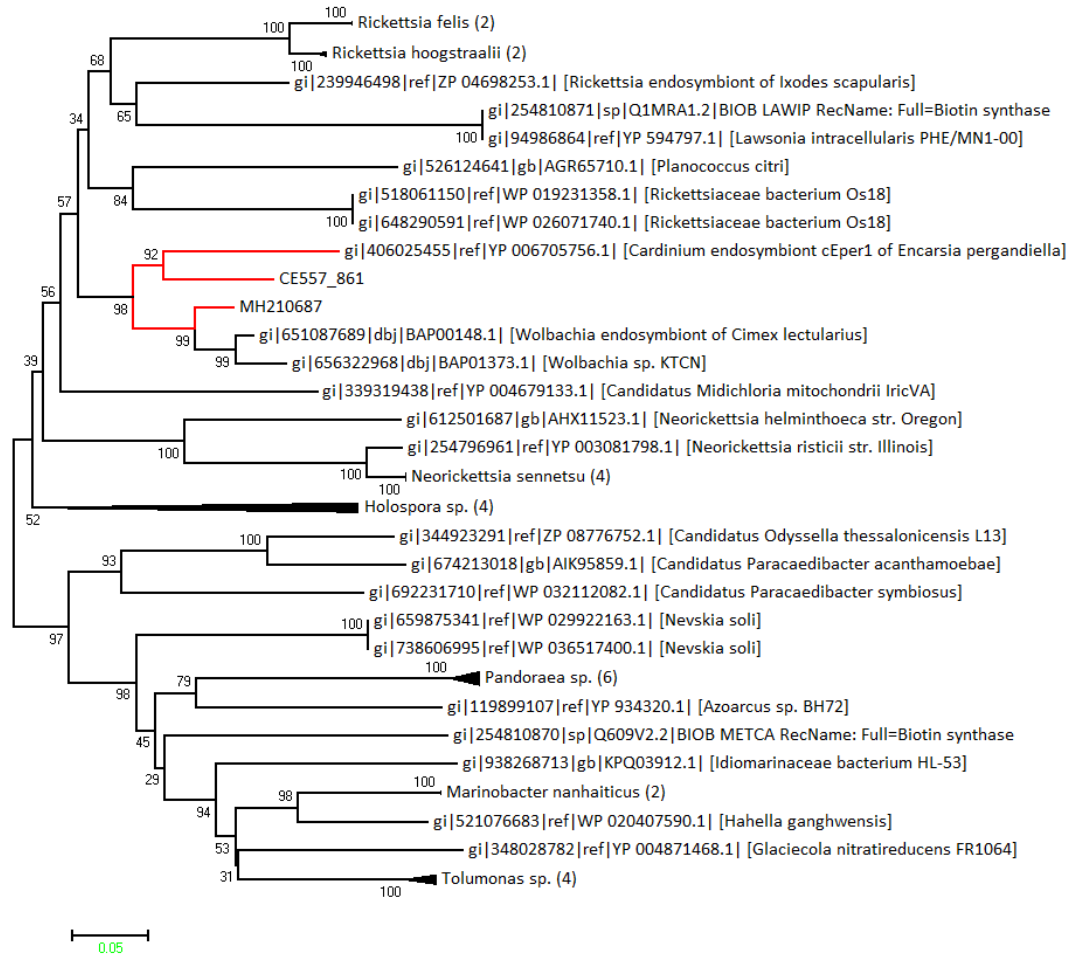
D: CE557_859 (bioH: pimeloyl-[acyl-carrier protein] methyl ester esterase)



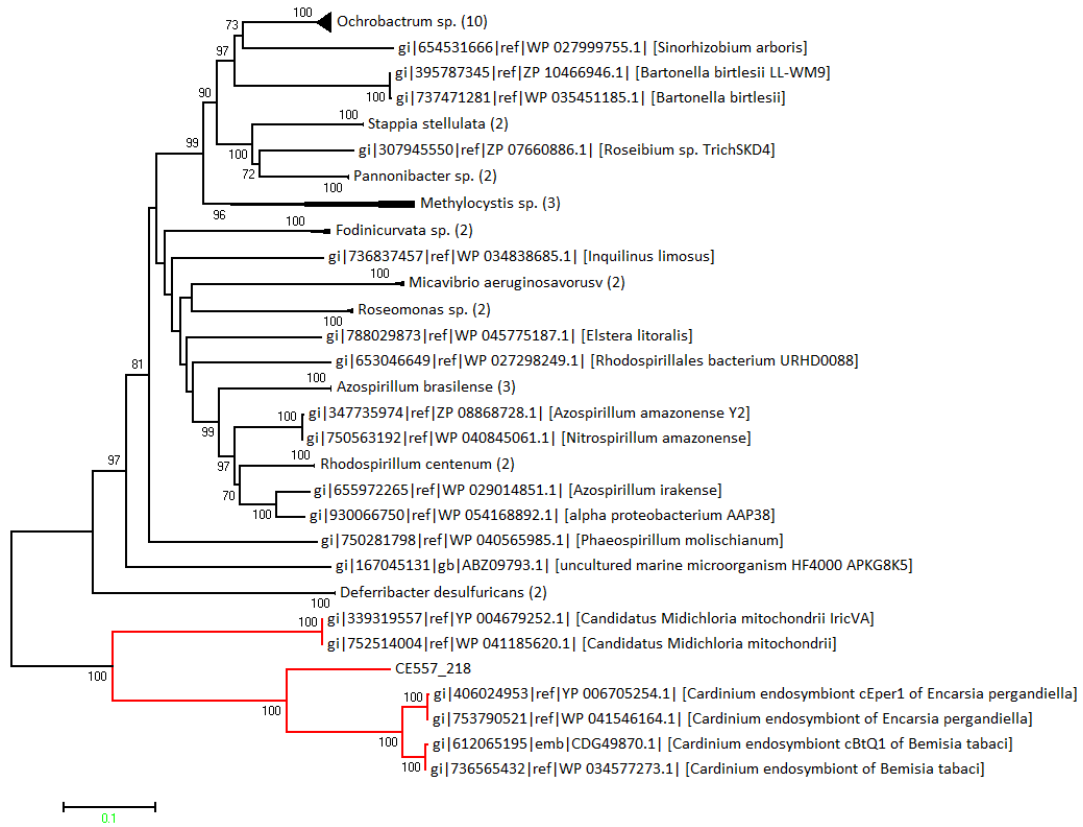
E: CE557_860 (bioF: 8-amino-7-oxononanoate synthase)



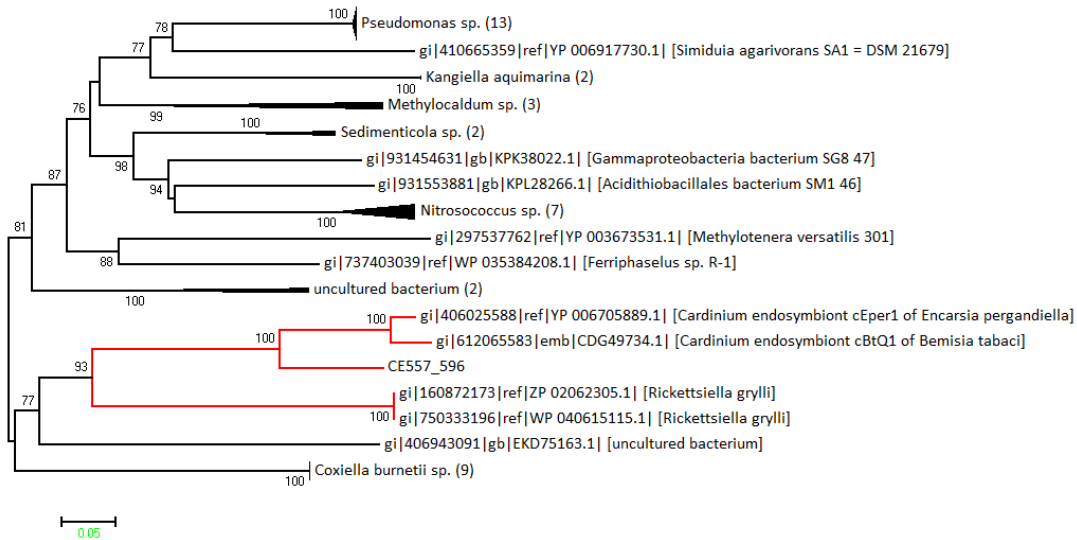
F: CE557_861 (bioB: biotin synthase)



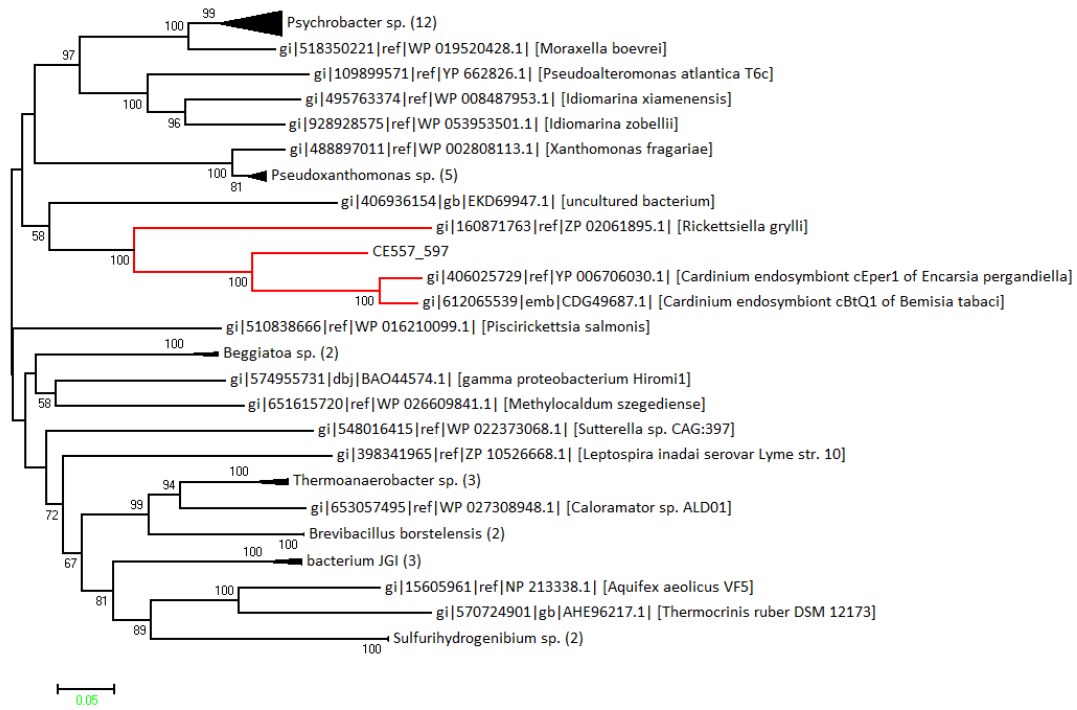
G: CE557_218 (ppdK, pyruvate phosphate dikinase)



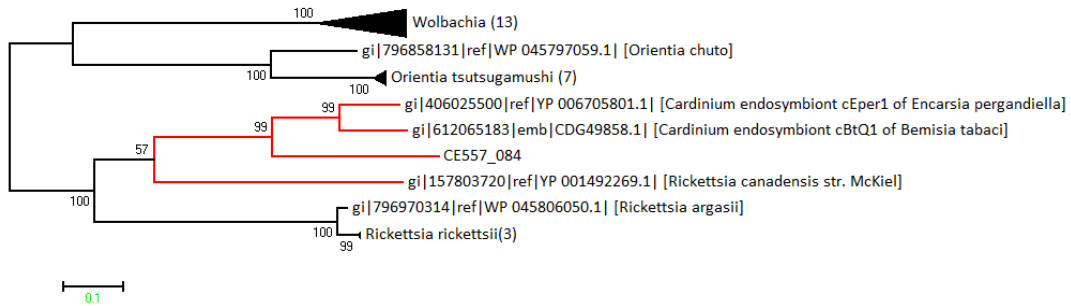
H: CE557_596 (gpml, phosphoglyceromutase)



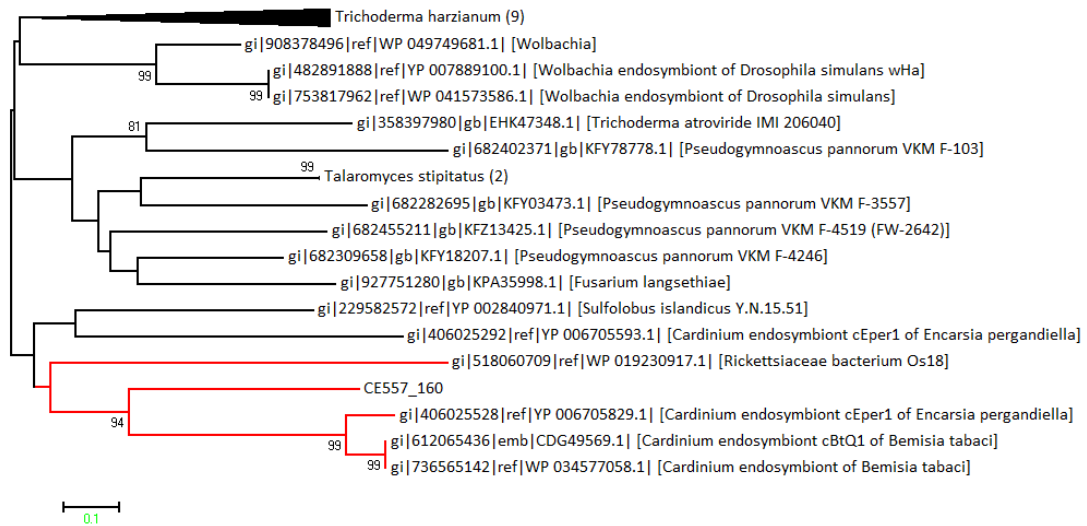
I: CE557_597 (enolase, phosphopyruvate hydratase)



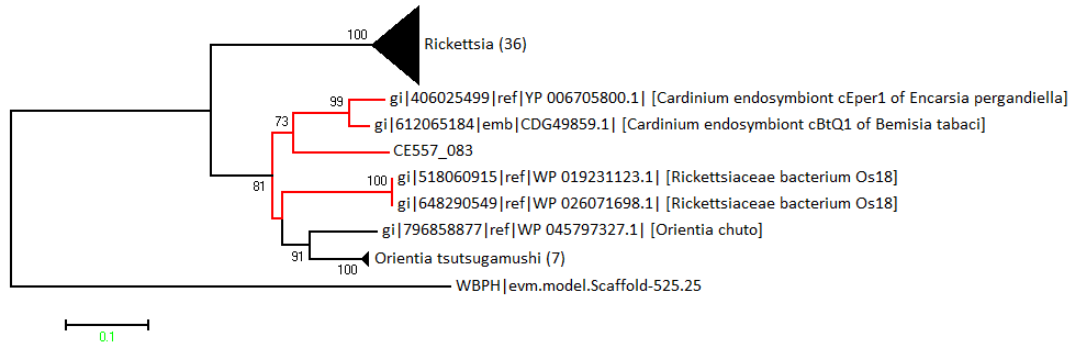
J: CE557_084 (hypothetical protein)



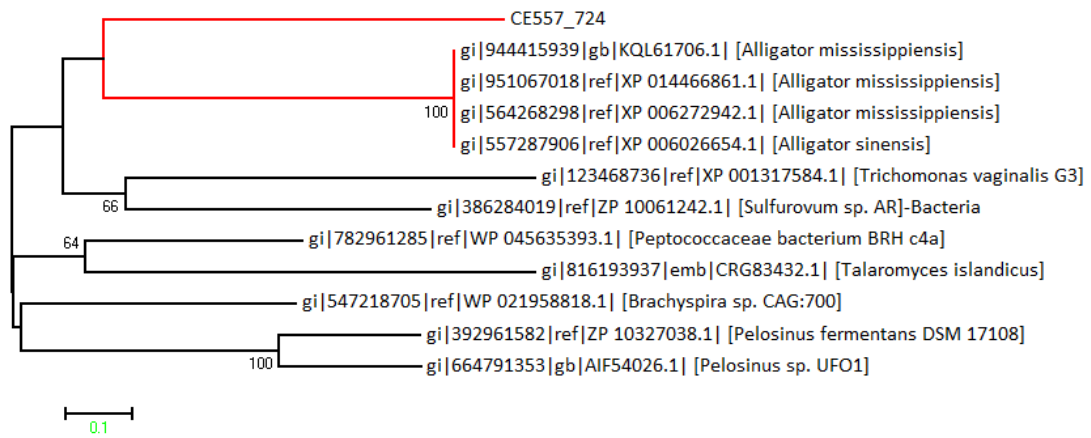
K: CE557_160 (ankyrin-1-like protein)



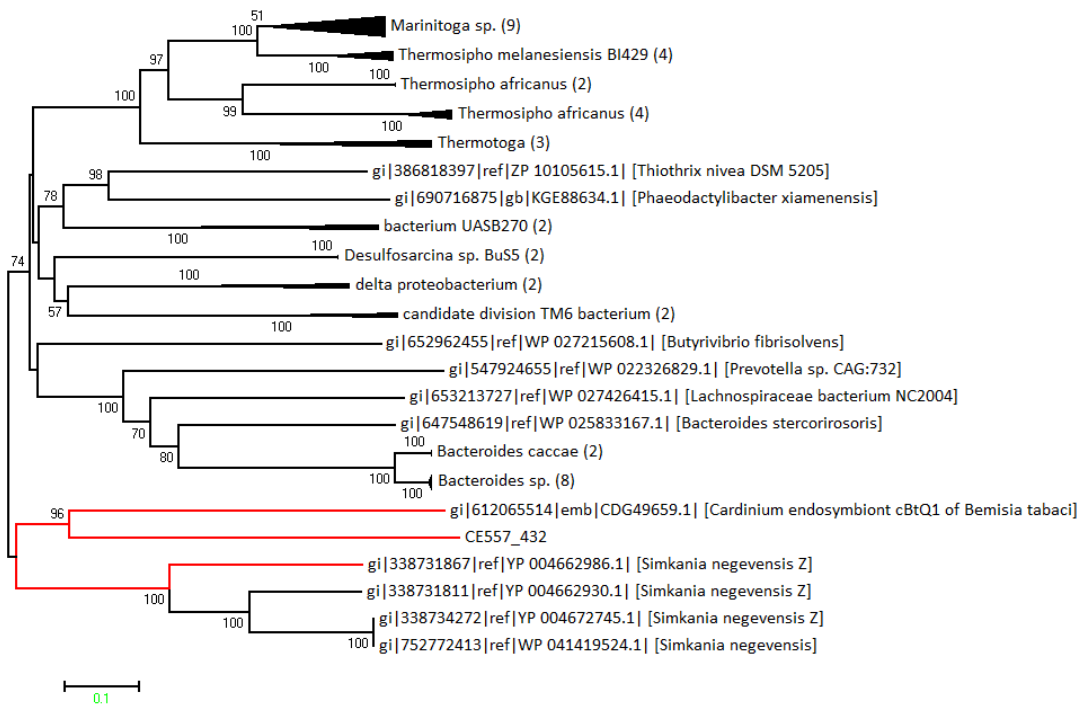
L: CE557_083 (3-methyladenine DNA glycosylase)



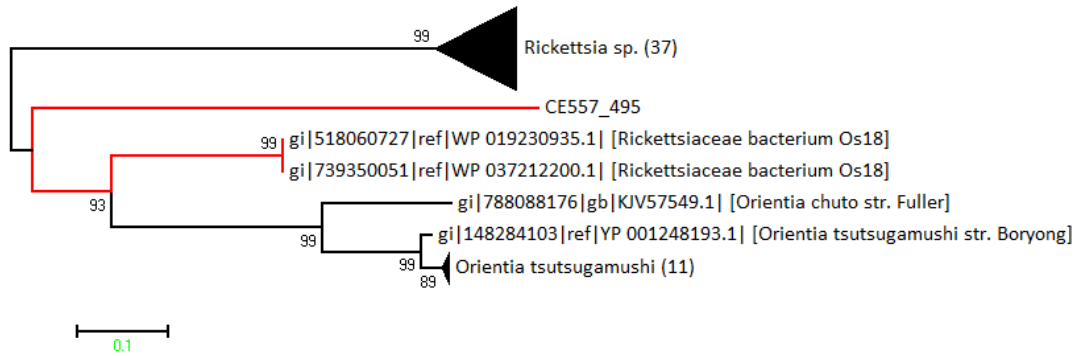
M: CE557_724 (Ankyrin repeat-containing protein)



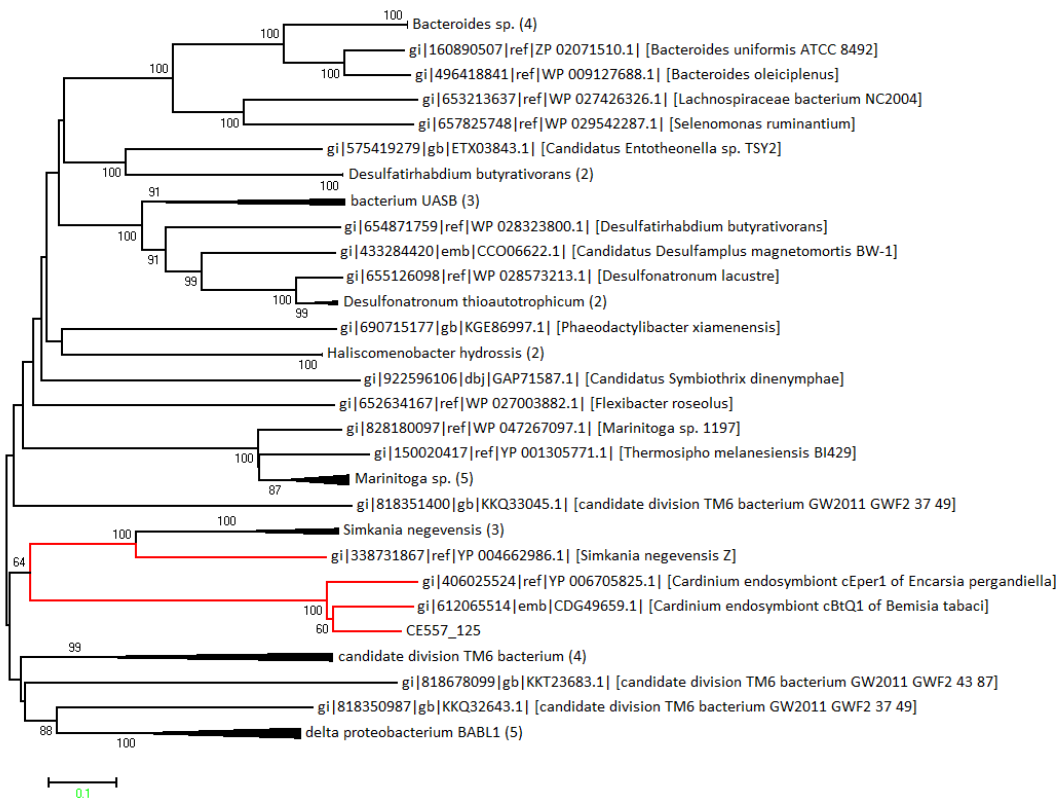
N: CE557_432 (hypothetical protein)



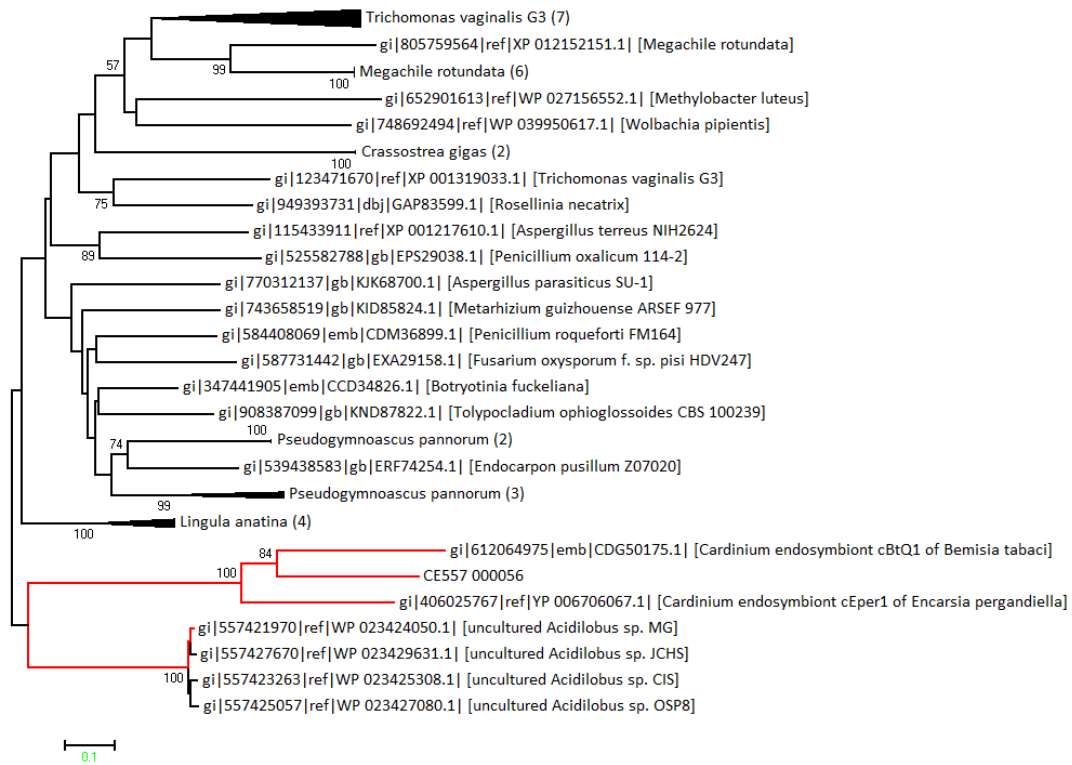
O: CE557_495 (hypothetical protein)



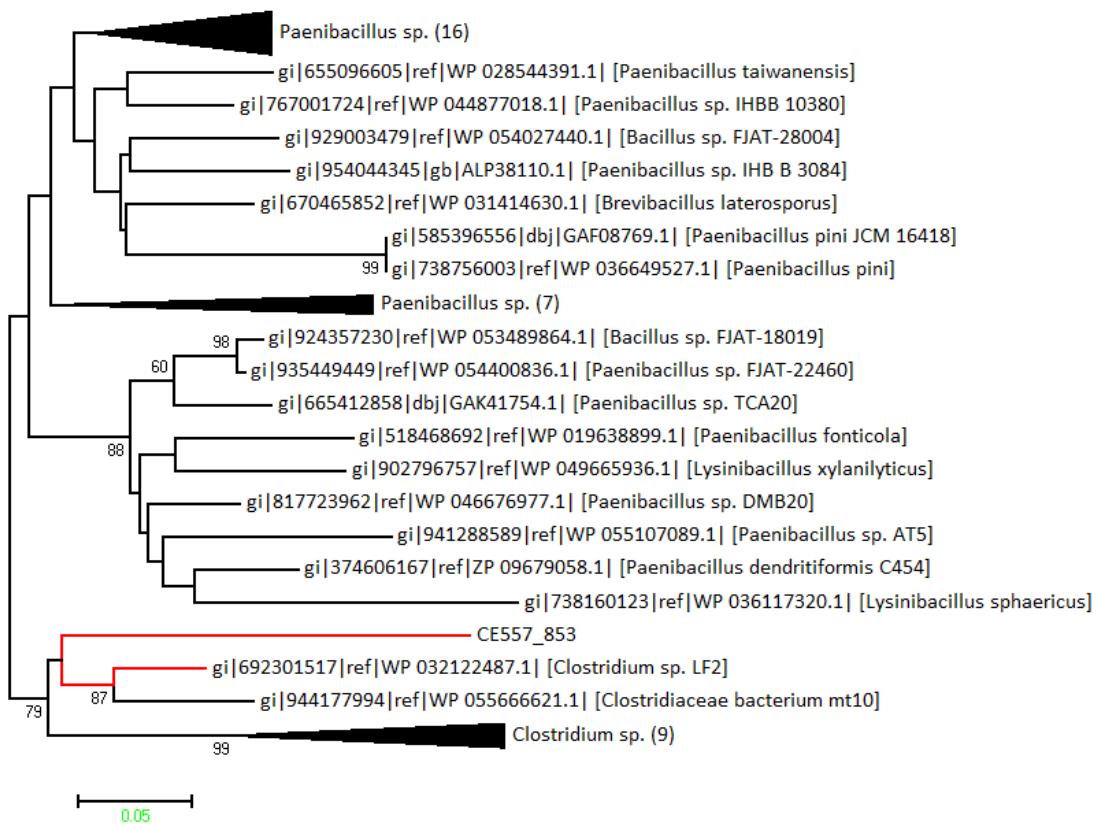
P: CE557_125 (hypothetical protein)



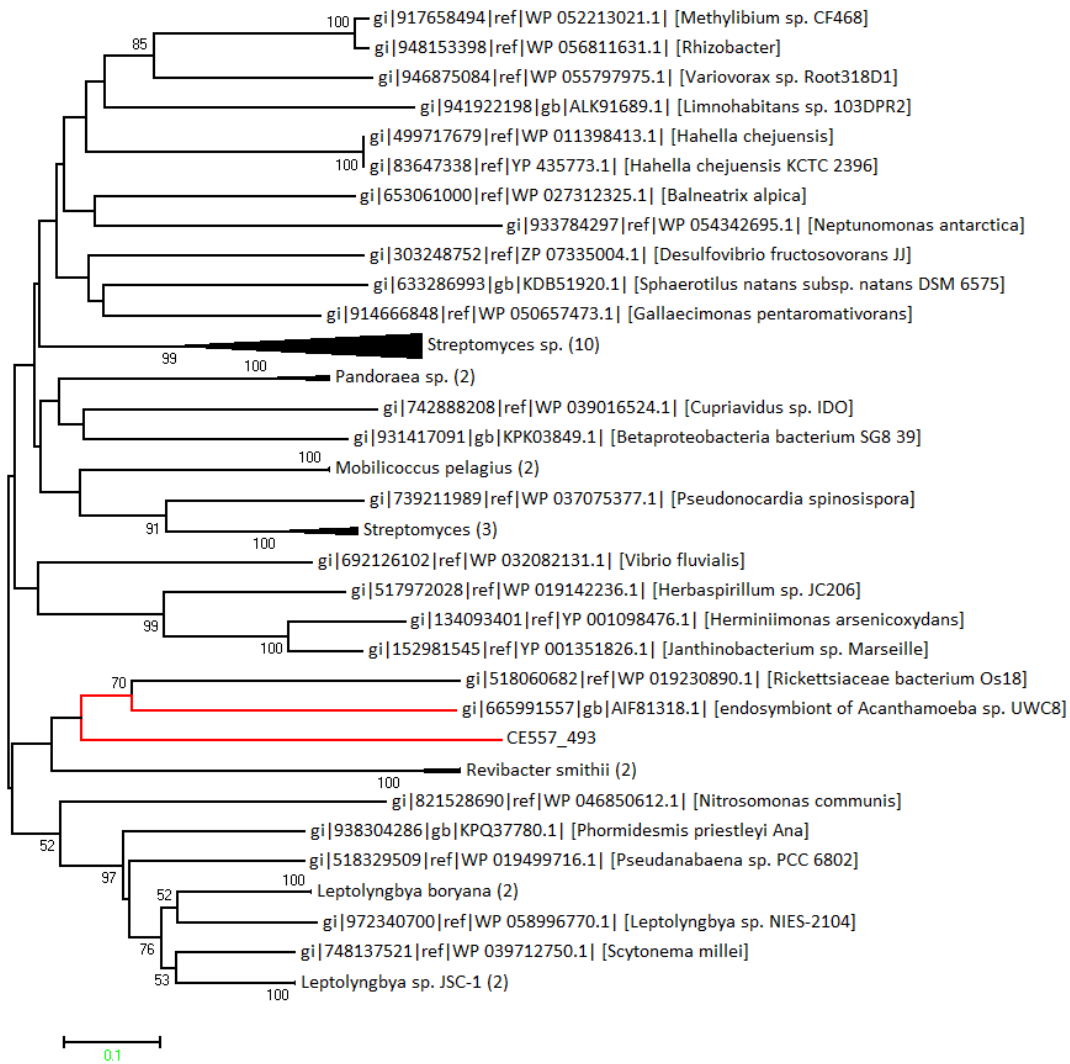
Q: CE557_056 (putative nacht and ankyrin domain protein)



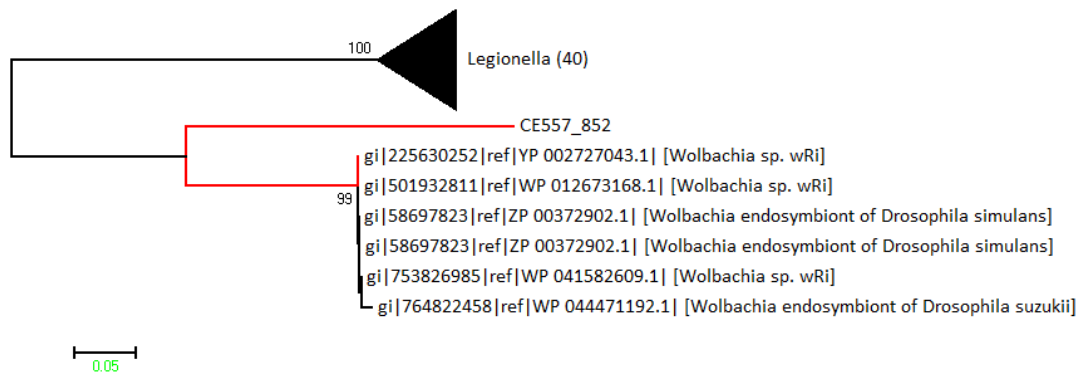
R: CE557_853 (3-demethylubiquinone-9 3-methyltransferase)



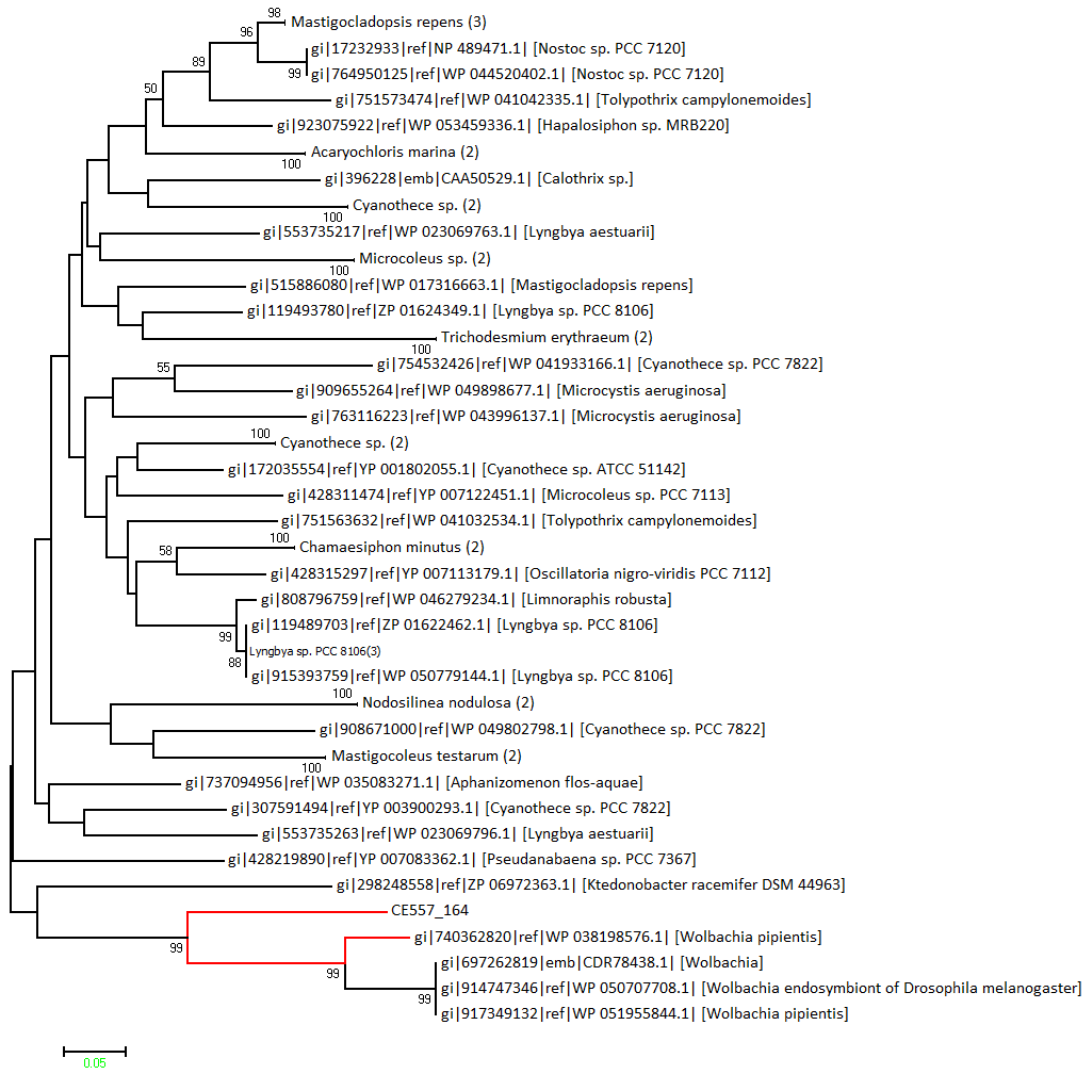
S: CE557_493 (hypothetical protein)



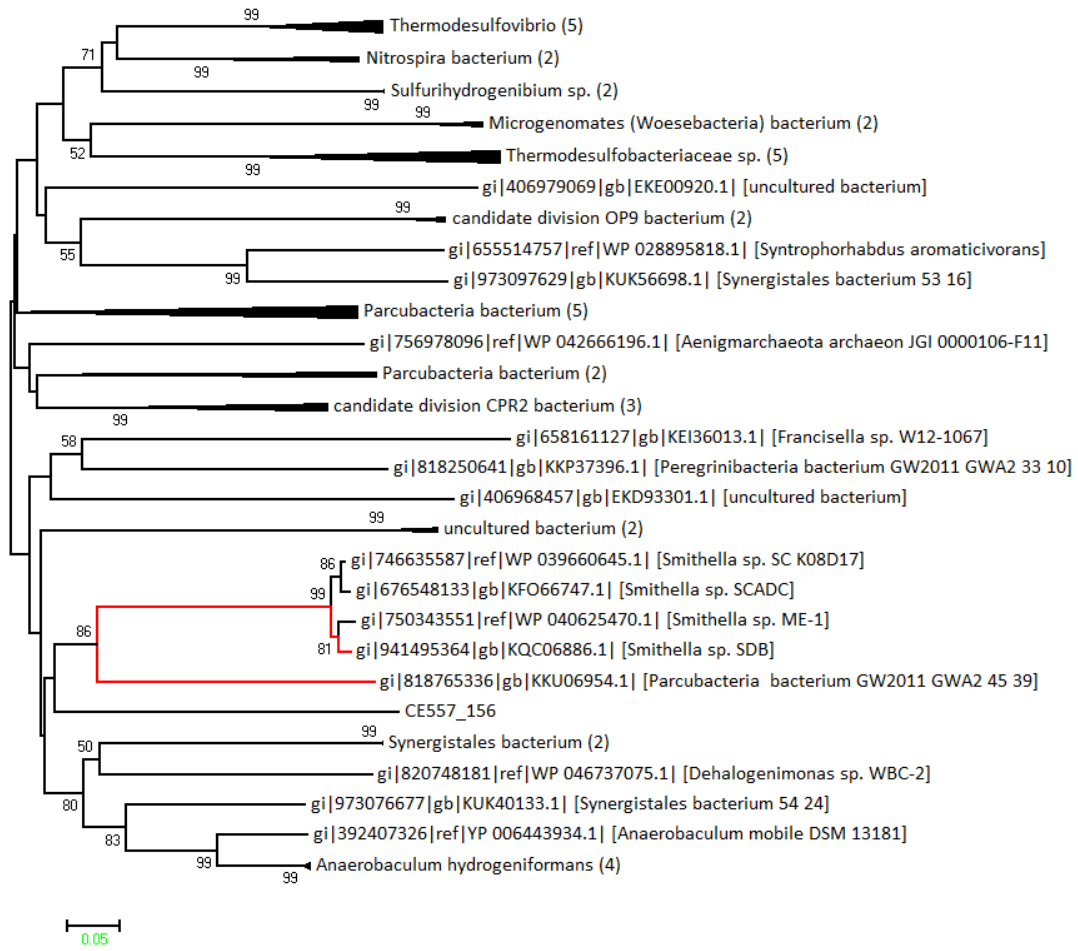
T: CE557_852 (ABC transporter transmembrane region, putative)



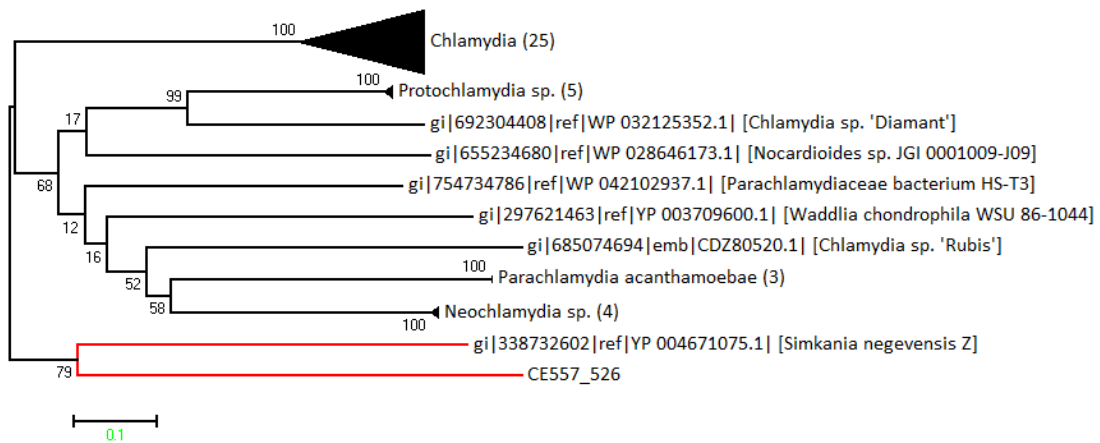
U: CE557_164 (hypothetical protein)



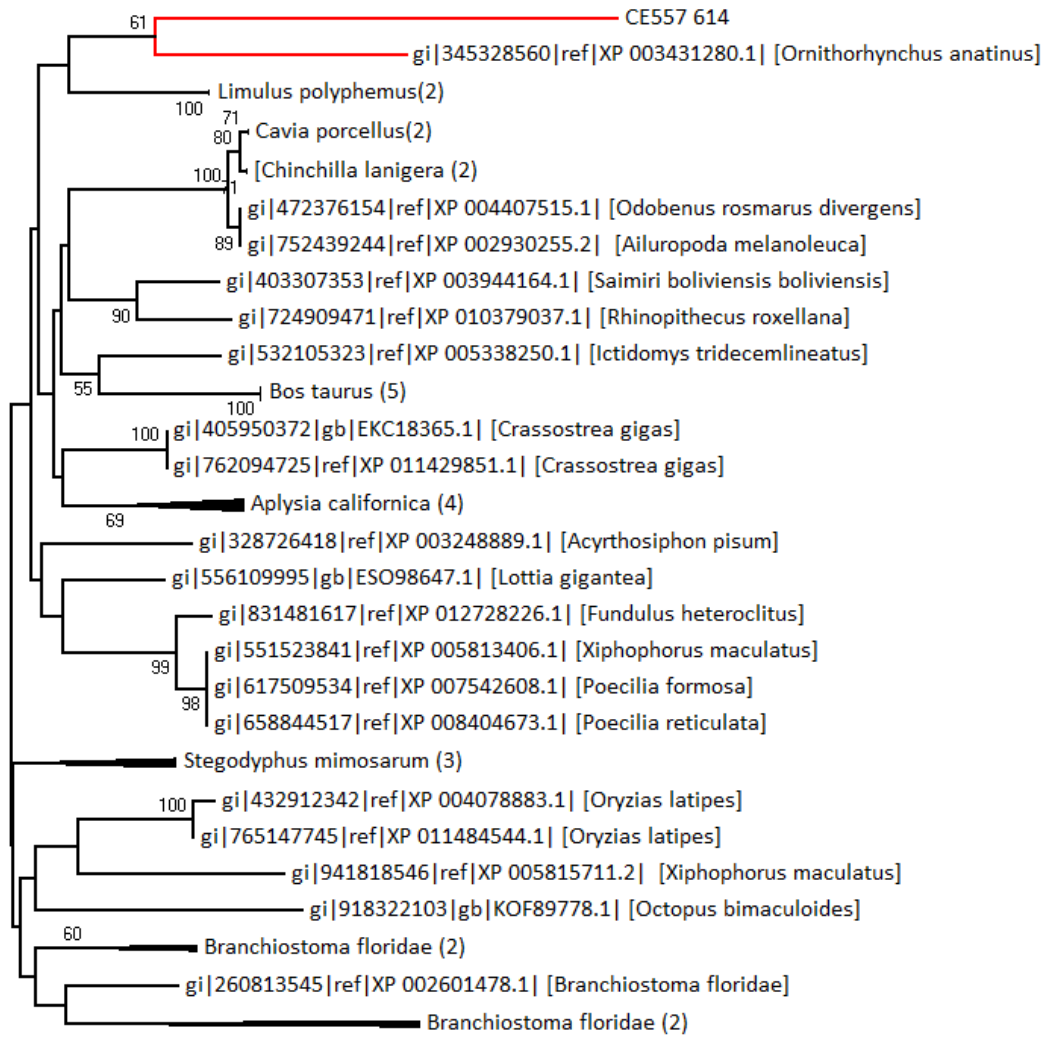
V: CE557_156 (PIF1 helicase)



W: CE557_526 (hypothetical protein)

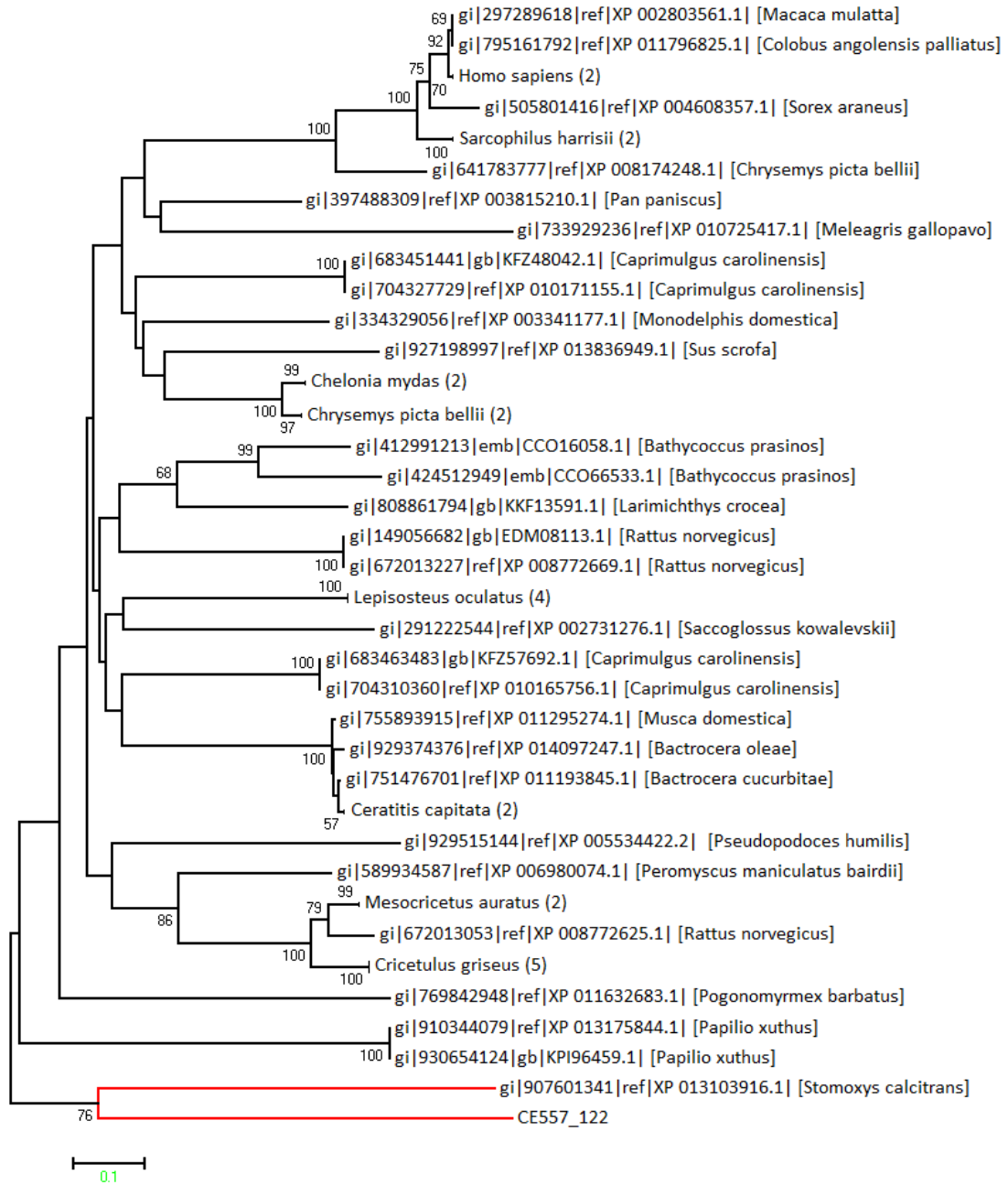


X: CE557_614 (zinc finger protein OZF-like)

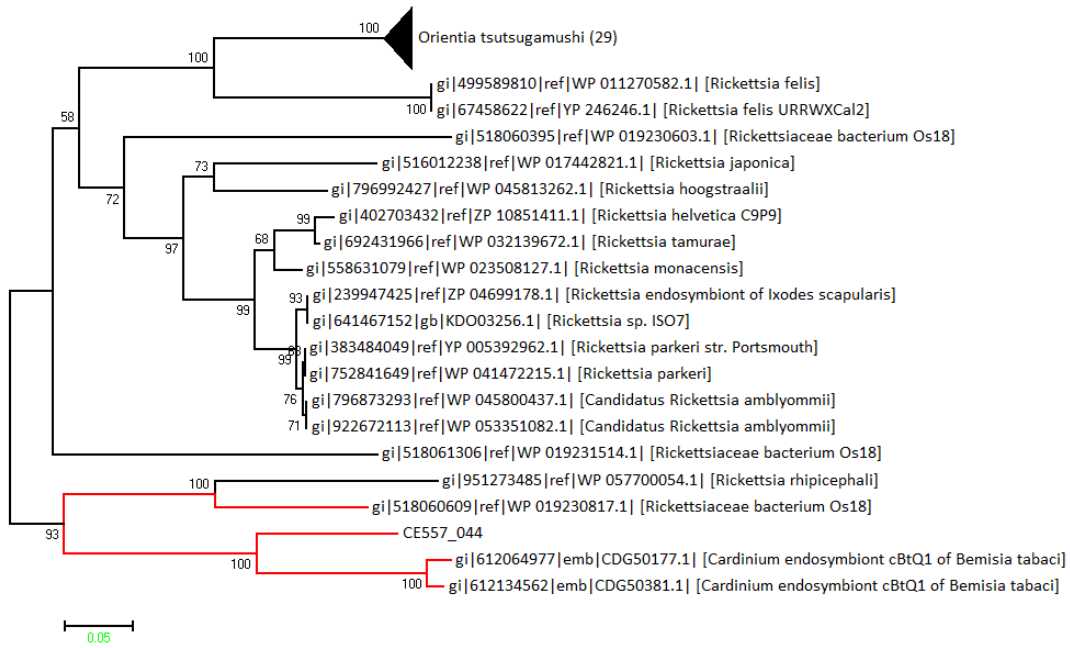


0.05

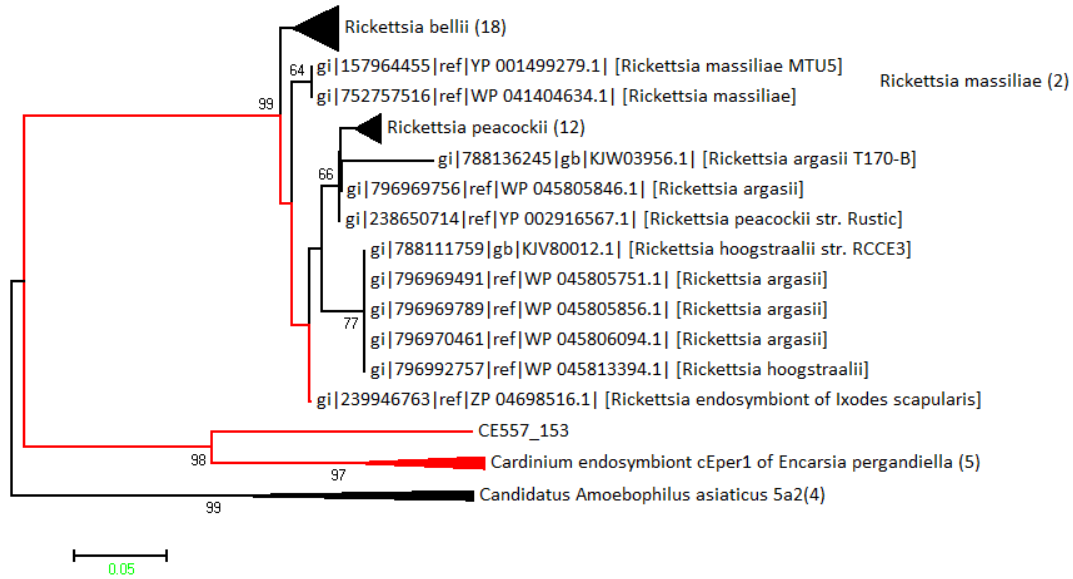
Y: CE557_122 (zinc finger protein 419-like)



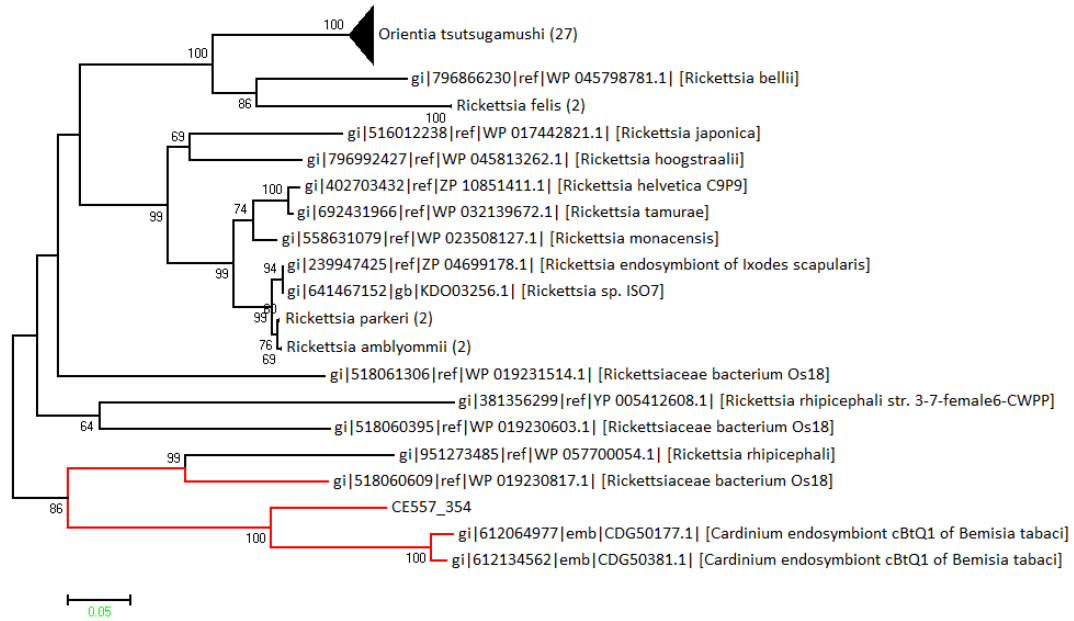
AA: CE557_044 (hypothetical protein)



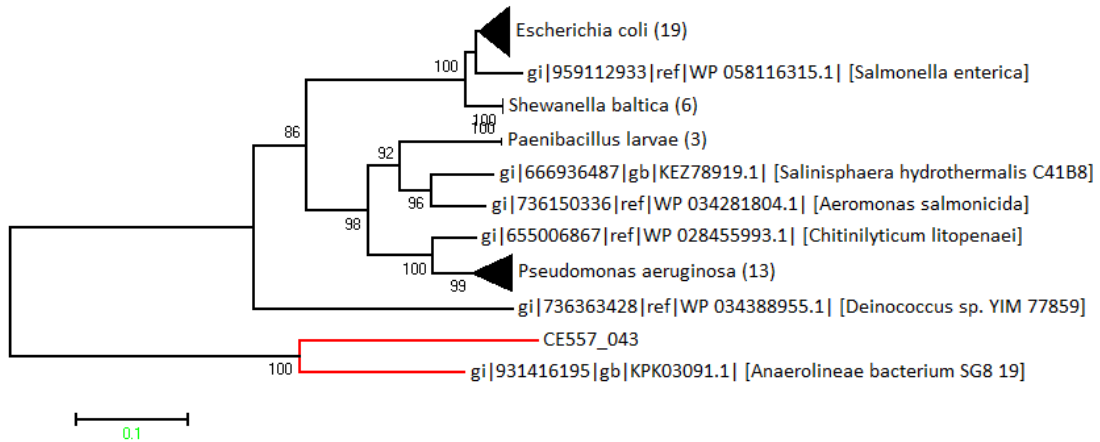
AB: CE557_153 (integrase core domain protein)



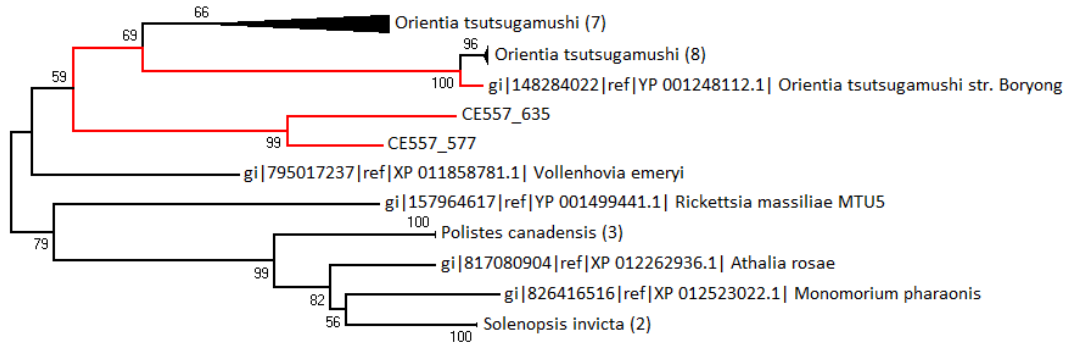
AC: CE557_354 (hypothetical protein)



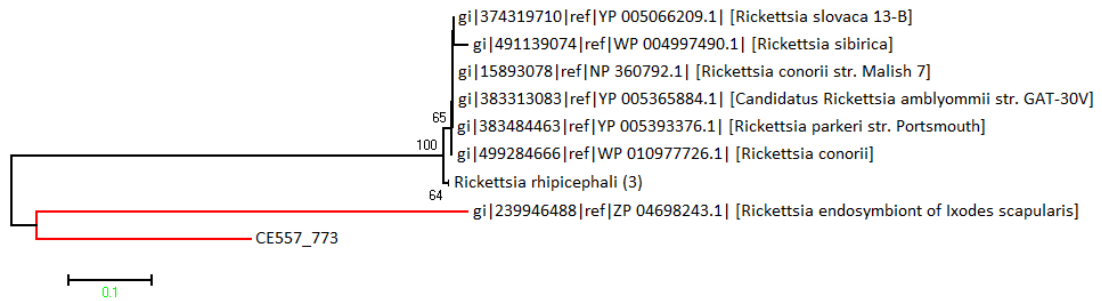
AD: CE557_043 (hypothetical protein)



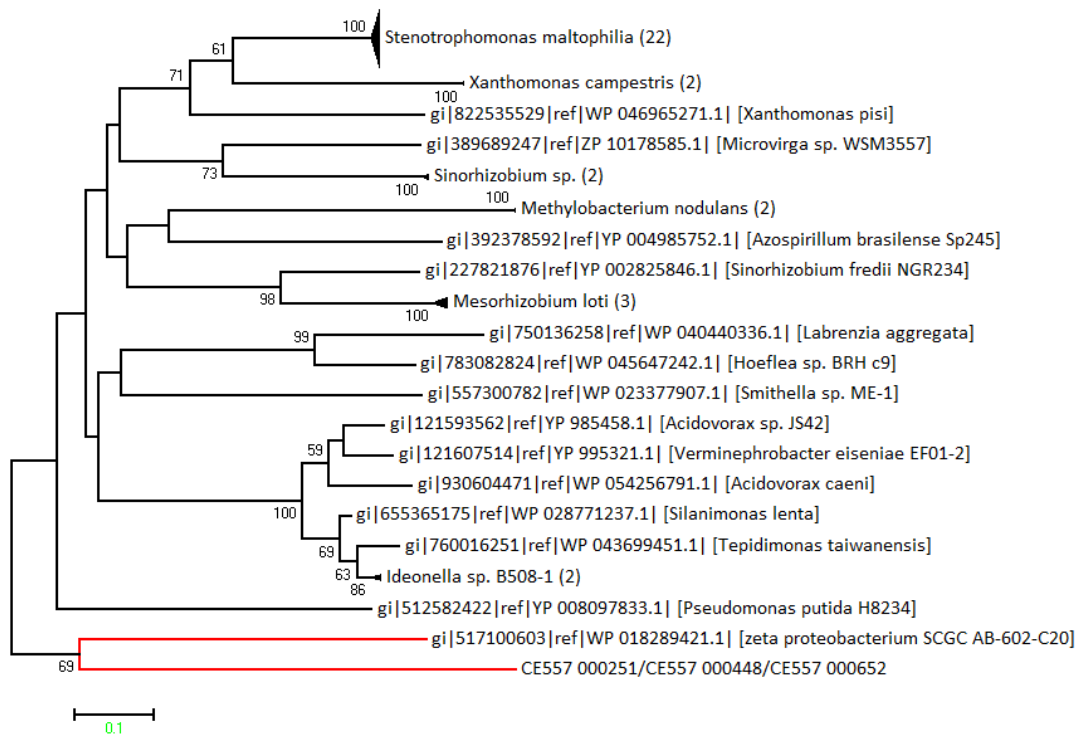
AE: CE557_635 (hypothetical protein)



AF: CE557_773 (hypothetical protein)



AG: CE557_251/CE557_448/CE557_652 (transposase)



AH: CE557_175/CE557_234/CE557_249/CE557_446/CE557_650/CE557_666
(hypothetical protein)

