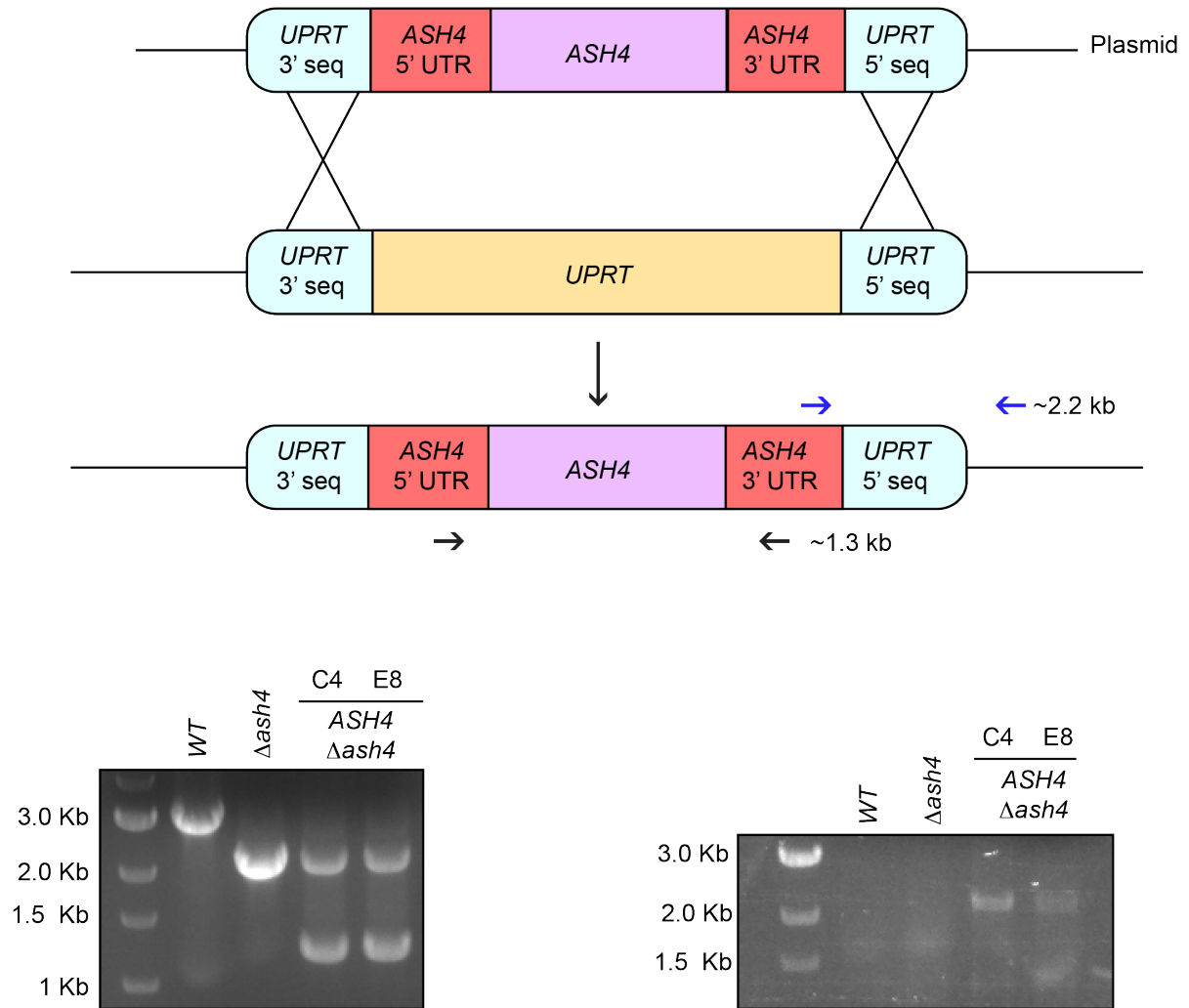


**A**

**Supplemental Figure 2:** Generation of the *ASH4* ( $\Delta ash4$  *ASH4*) rescue strain. Cartoon illustrating *ASH4* integration at the UPRT locus. Black arrows indicate primers for confirming the presence of *ASH4*. Primers lie both in the UTR regions of the rescue construct and the endogenous *ASH4* locus. Primers test for integration of the rescue construct and the  $\Delta ash4$  status. Blue arrows indicate location of UPRT integration check primers. Left gel shows PCR confirming integration of *ASH4* rescue construct. PCR on *ASH4* rescue strains generates both a 2kb band indicating  $\Delta ash4$ , and a 1.3kb band corresponding to the rescue construct. Two clones are shown for *ASH4* rescue, clone C4 was used for experiments in paper. Right gel shows successful integration of the rescue construct at the UPRT locus. Successful integration results in a PCR product of 2.2 kb.