

Supplementary figures and tables for

Anterior cruciate ligament-derived mesenchymal stromal cells have a propensity to differentiate propensity into the ligament lineage.

Authors

Yusuke Ogata, Yo Mabuchi, Kosuke Shinoda, Yuta Horiike, Mitsuru Mizuno, Koji Otabe, Eriko Grace Suto, Nobuharu Suzuki, Ichiro Sekiya & Chihiro Akazawa

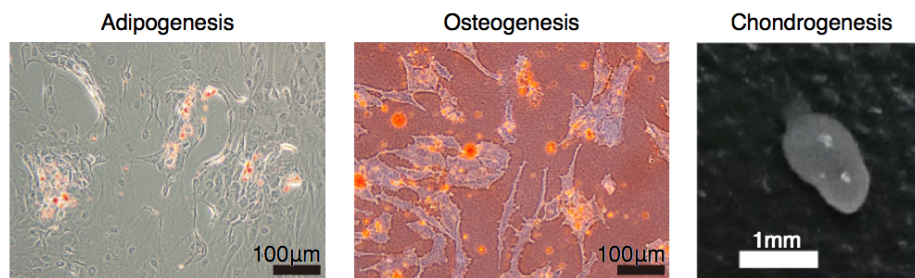
Supplementary Fig.S1: Differentiation ability of ACL-MSCs

Supplementary Fig.S2: Cell surface marker analysis of cultured ACL-MSCs

Supplementary Fig.S3: The location between ACL-MSCs and ligament markers

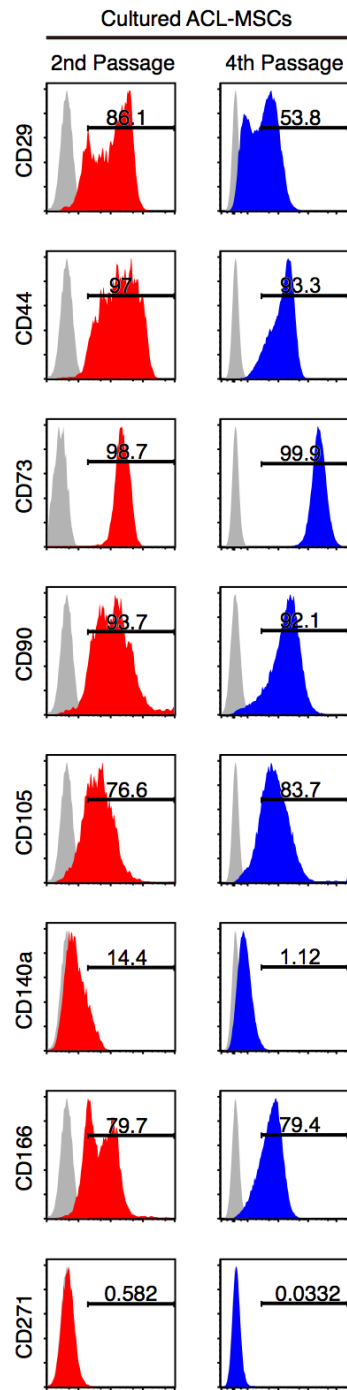
Supplementary Table.S1: Donors information

Supplementary Table.S2: Antibodies for FACS



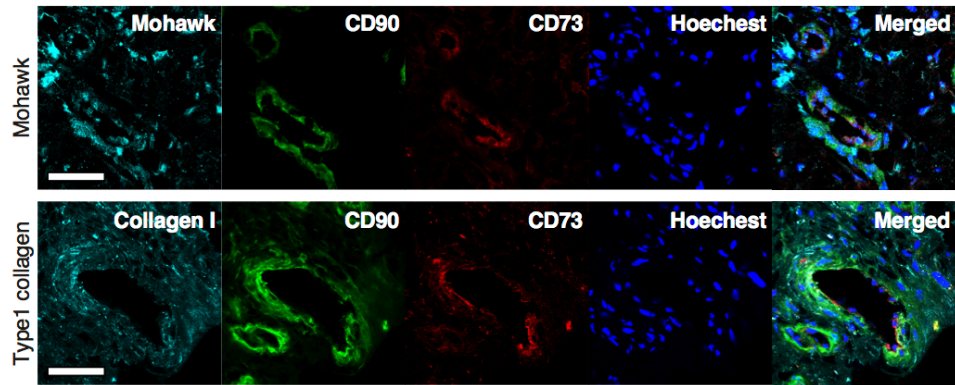
Supplementary Fig.S1 | Differentiation ability of ACL-MSCs.

Representative phase contrast micrographs of ACL-derived CD73+/90+ cells differentiated into adipocytes (left), osteoblasts (middle) and chondrocytes (right).



Supplementary Fig.S2 | Cell surface marker analysis of cultured ACL-MSCs.

Representative cell surface expression of CD29, 44, 73, 90, 105, 140a, 166 and 271 in cultured CD73⁺/90⁺ ACL-MSCs at 2nd (left, red) and 4th (right, blue) passage (gray; isotype control).



Supplementary Fig.S3 | The location between ACL-MSCs and ligament markers.

Immunofluorescent staining of human ACL tissue with anti-human Mohawk (cyan, upper), Type 1 collagen (cyan, bottom), CD90 (green), CD73 (red) and nuclei (blue) (Scale bars = 50 μ m)

Supplementary Table.S1 | Donors information

Donor #	Age	Gender	Operative Procedure	Primary Disease	Used tissue	
					ACL	BM
1	65	Female	TKA*	OA**	<input type="radio"/>	
2	67	Male			<input type="radio"/>	
3	83	Female			<input type="radio"/>	
4	73	Male			<input type="radio"/>	
5	79	Female			<input type="radio"/>	
6	70	Female			<input type="radio"/>	
7	75	Male			<input type="radio"/>	<input type="radio"/>
8	70	Female			<input type="radio"/>	<input type="radio"/>
9	73	Male			<input type="radio"/>	<input type="radio"/>
10	74	Female			<input type="radio"/>	<input type="radio"/>
11	69	Female			<input type="radio"/>	<input type="radio"/>
12	76	Male				<input type="radio"/>
13	74	Female				<input type="radio"/>
14	68	Female				<input type="radio"/>

*TKA: Total Knee Arthroplasty

**OA: Osteoarthritis of knee joint

Supplementary Table.S2 | Antibodies for FACS

Color	Antigen	Company
PE	CD29	BioLegend
	CD44	
	CD105	
	CD106	
	CD140a	
	CD146	
	CD166	
PE-Cy7	CD271	BD Pharmingen
	CD31	
	CD45	
	CD90	
FITC	CD235a	
APC	CD90	
	CD29	
	CD44	
	CD73	
	CD105	
	CD106	