

# Chemical Constituents from *Euphorbia kansui*

Qiao Zhang<sup>1</sup>, Qin-Rong Zhou<sup>1</sup>, Jian-Wei Lou<sup>1</sup>, Pei-Dong Chen<sup>1</sup>, Wei-Feng Yao<sup>1</sup>, Wei-Wei Tao<sup>1</sup>, Yu-Ping Tang<sup>2</sup>, Guan-Cheng Dai<sup>1</sup>, Kun Wang<sup>1</sup> and Li Zhang<sup>1,\*</sup>

<sup>1</sup> Jiangsu Key Laboratory for High Technology Research of TCM Formulae, National and Local Collaborative Engineering Center of Chinese Medicinal Resources Industrialization and Formulae Innovative Medicine and Jiangsu Collaborative Innovation Center of Chinese Medicinal Resources Industrialization, Nanjing University of Chinese Medicine, Nanjing 210023, China; 18700081184@163.com (Q.Z.); r790507807@gmail.com (Q.-R.Z.); trustlou@163.com (J.-W.L.); chenpeidong1970@163.com (P.-D.C.); yaowf@njucm.edu.cn (W.-F.Y.); tw845@163.com (W.-W.T.); 18260028211@163.com (G.-C.D.); 18260028237@163.com (K.W.)

<sup>2</sup> College of Pharmacy and Shaanxi Collaborative Innovation Center of Chinese Medicinal Resources Industrialization, Shaanxi University of Chinese Medicine, Xi'an 712046, China; 2051001@sntcm.edu.cn

\* Correspondence: zhangli@njucm.edu.cn; Tel.: +86-138-5147-2740; Fax: +86-025-8581-1524

## Compound 1

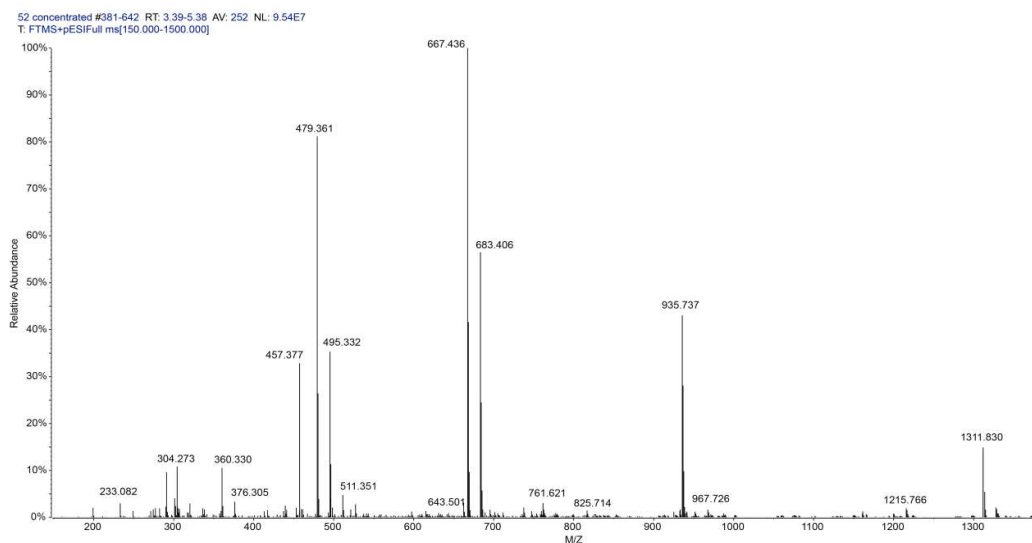


Figure 1-1. The HR-ESI-MS of tirucalla-8,23-diene-3 $\beta$ ,11 $\beta$ -diol-7-one

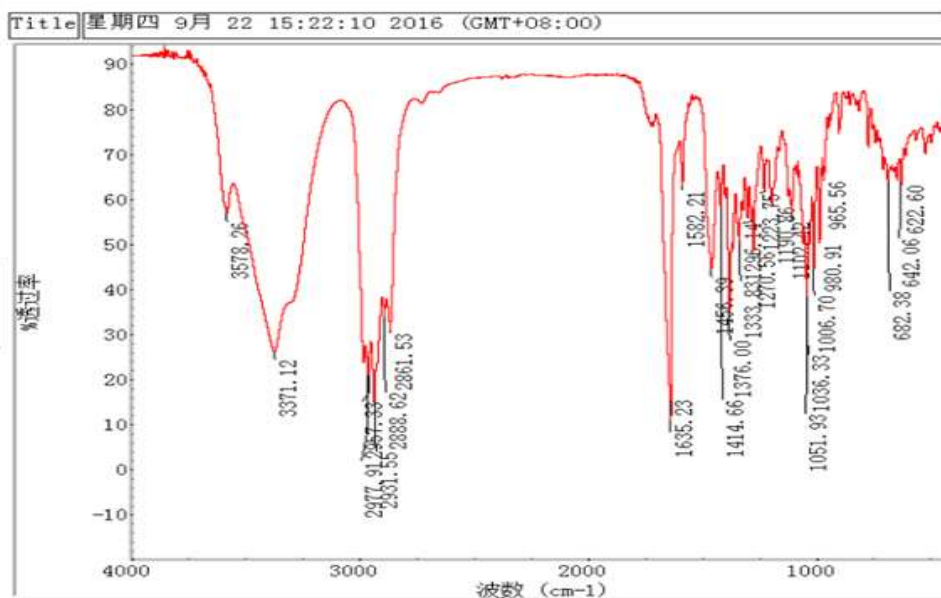


Figure 1-2. The IR of tirucalla-8,23-diene-3 $\beta$ ,11 $\beta$ -diol-7-one

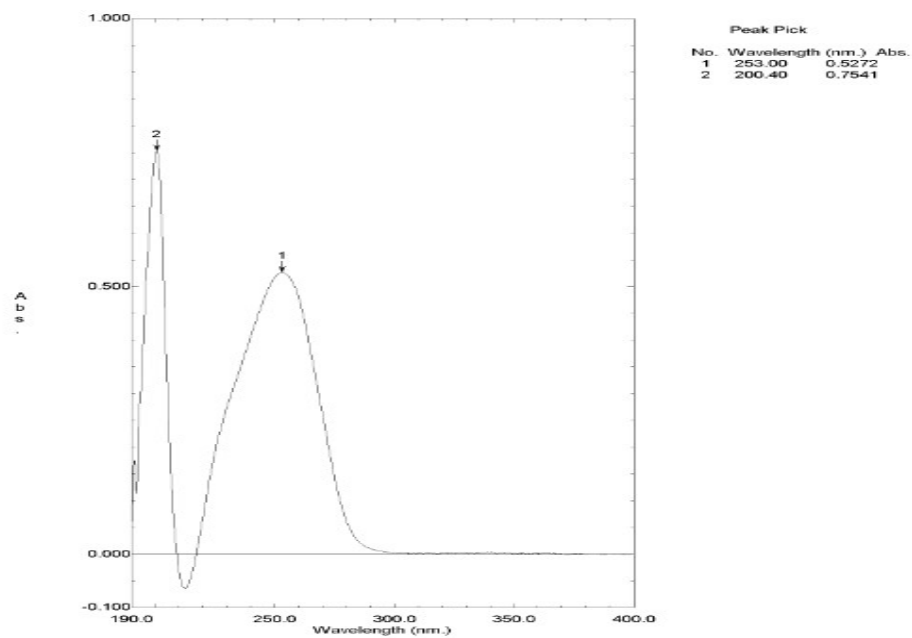


Figure 1-3. The UV of tirucalla-8,23-diene-3 $\beta$ ,11 $\beta$ -diol-7-one

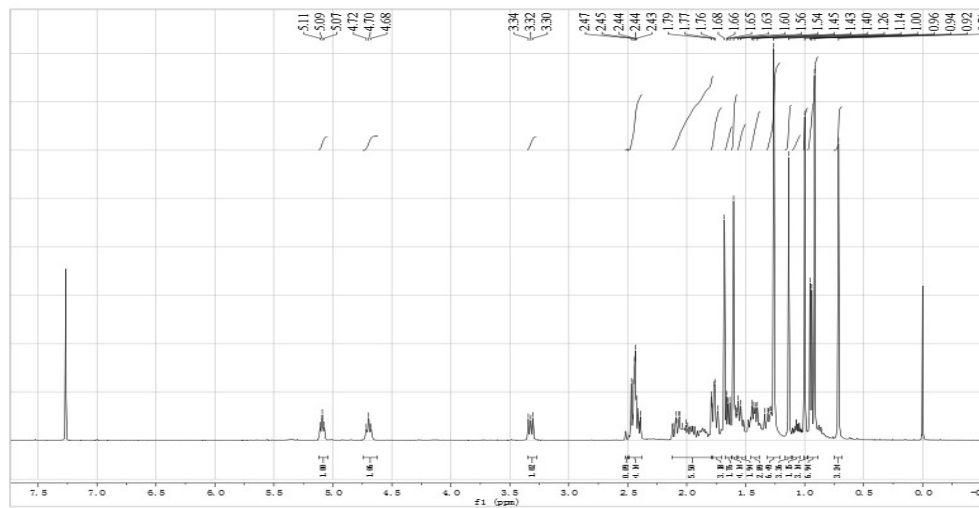


Figure 1-4. The  $^1\text{H}$ -NMR of tirucalla-8,23-diene-3 $\beta$ ,11 $\beta$ -diol-7-one

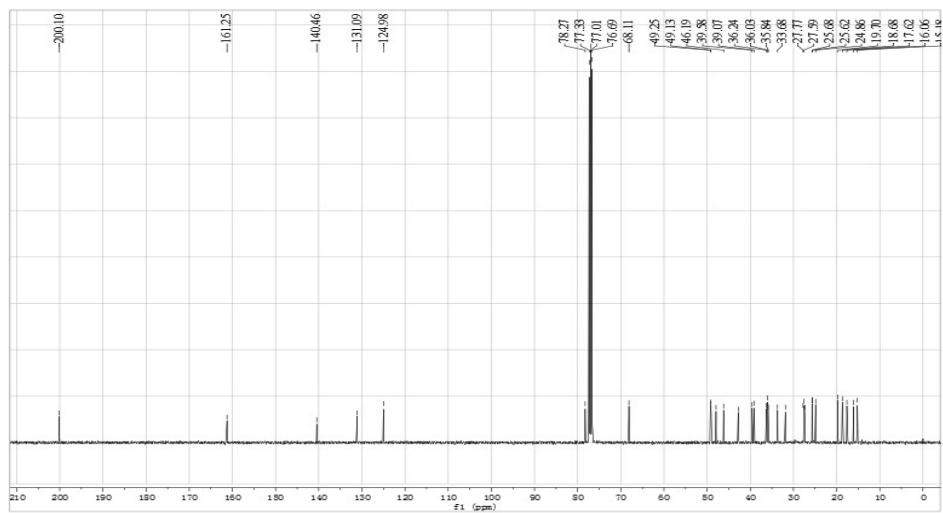


Figure 1-5. The  $^{13}\text{C}$ -NMR of tirucalla-8,23-diene-3 $\beta$ ,11 $\beta$ -diol-7-one

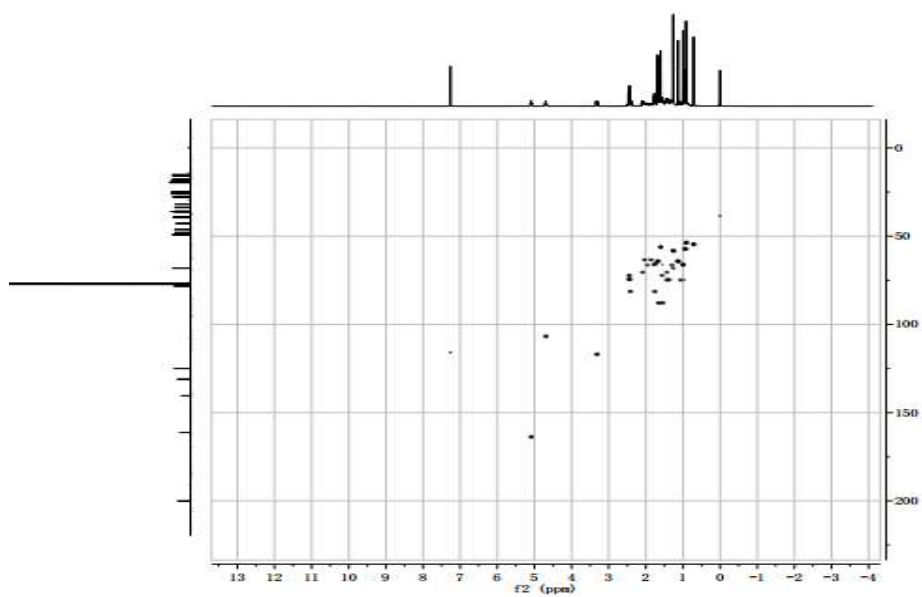


Figure 1-6. The 2D-HSQC of tirucalla-8,23-diene-3 $\beta$ ,11 $\beta$ -diol-7-one

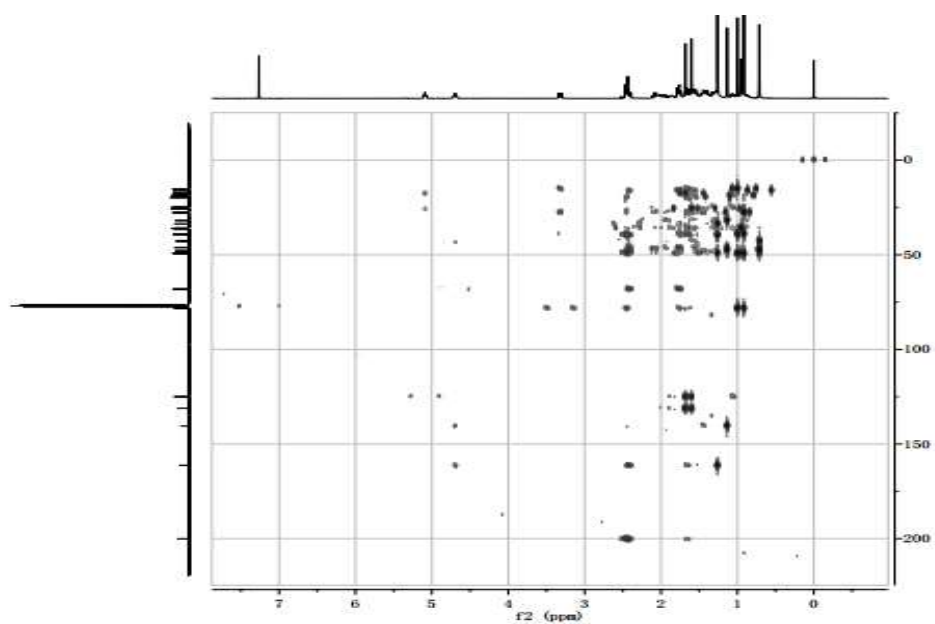


Figure 1-7. The 2D-HMBC of tirucalla-8,23-diene-3 $\beta$ ,11 $\beta$ -diol-7-one

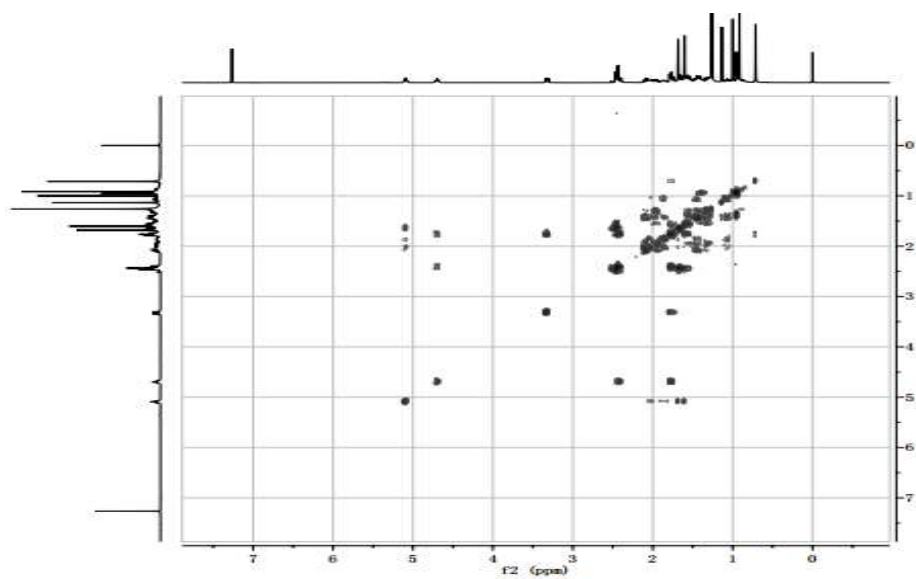


Figure 1-8. The 2D-COSY of tirucalla-8,23-diene-3 $\beta$ ,11 $\beta$ -diol-7-one

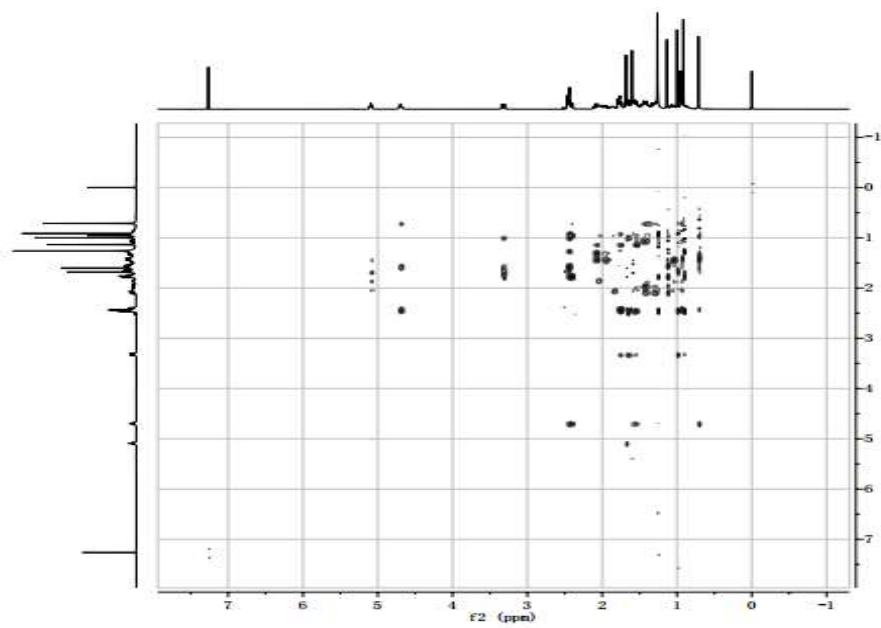


Figure 1-9. The 2D-NOESY of tirucalla-8,23-diene-3 $\beta$ ,11 $\beta$ -diol-7-one



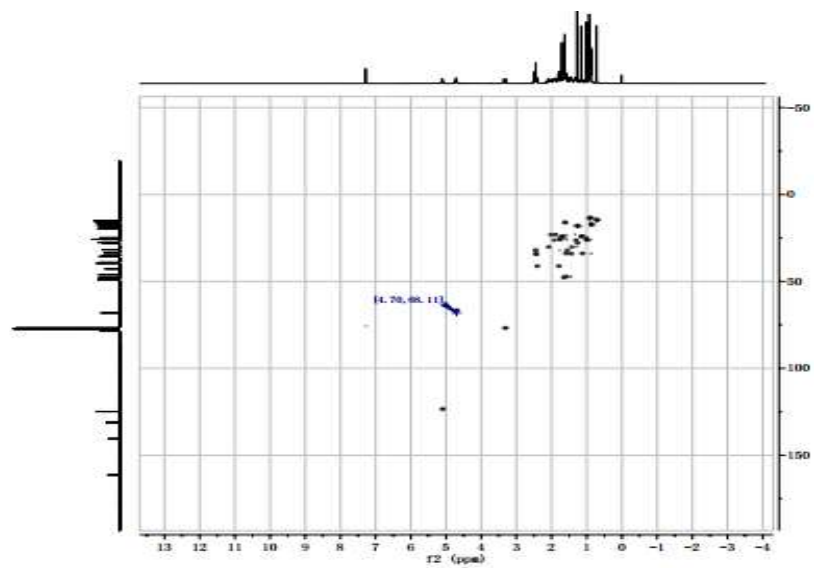


Figure 2-3. The 2D-HSQC of eupha-8,23-diene-3 $\beta$ ,11 $\beta$ -diol-7-one

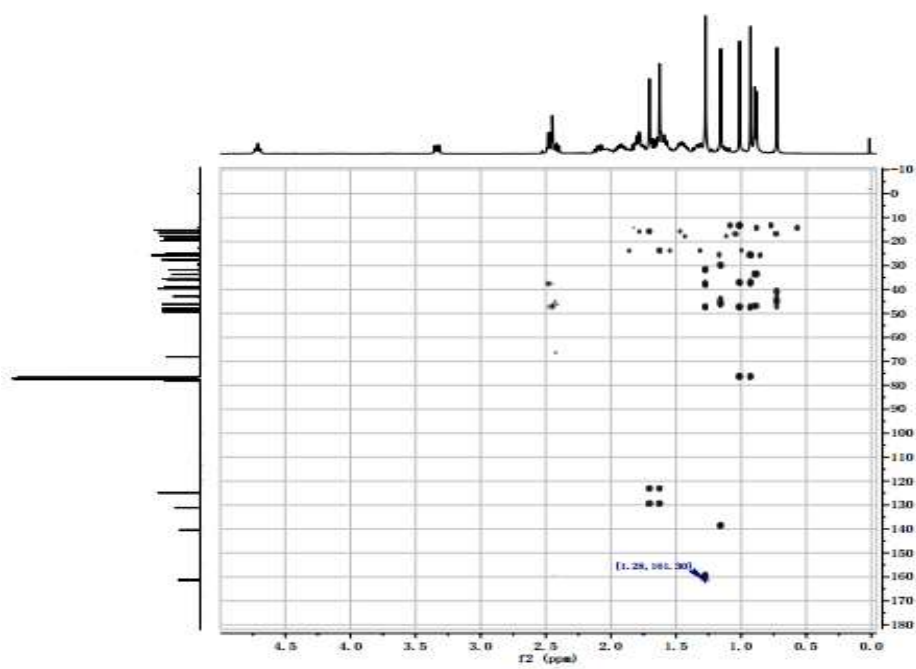


Figure 2-4. The 2D-HMBC of eupha-8,23-diene-3 $\beta$ ,11 $\beta$ -diol-7-one

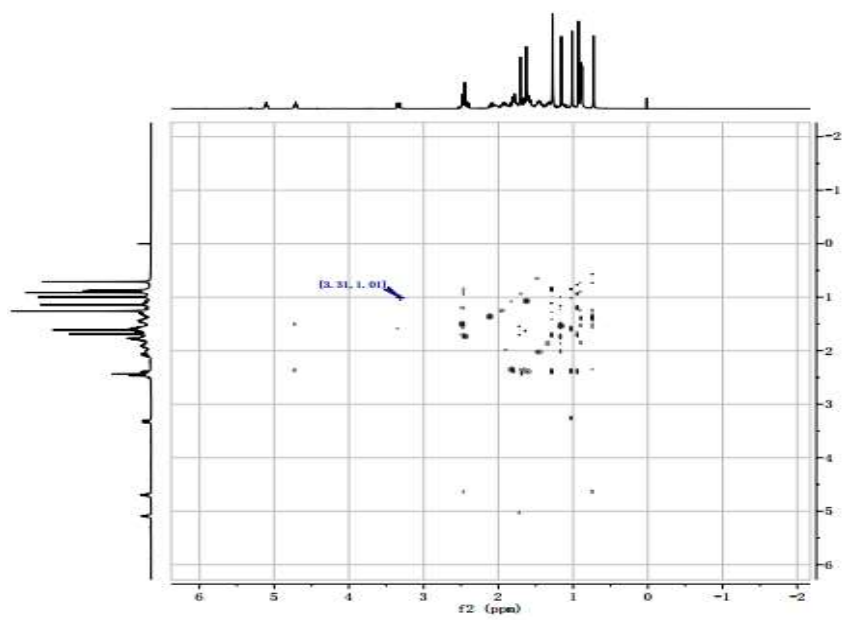
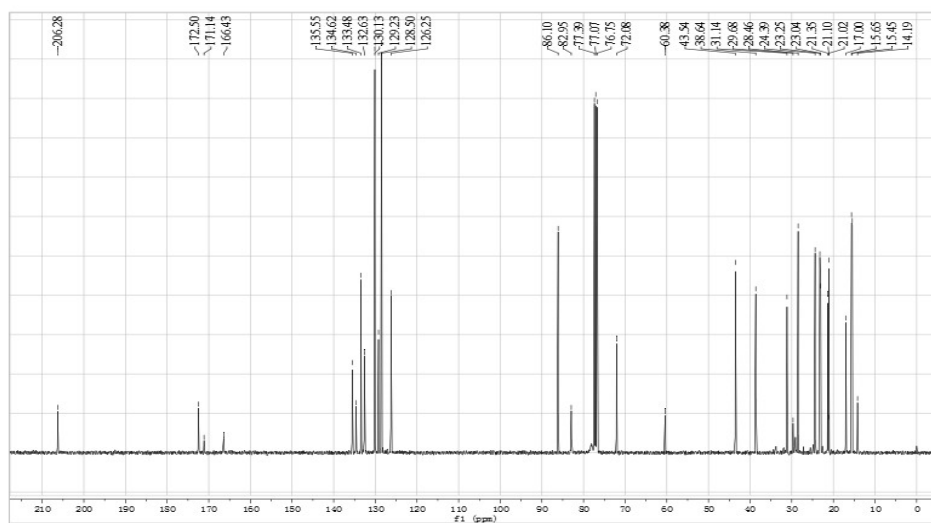
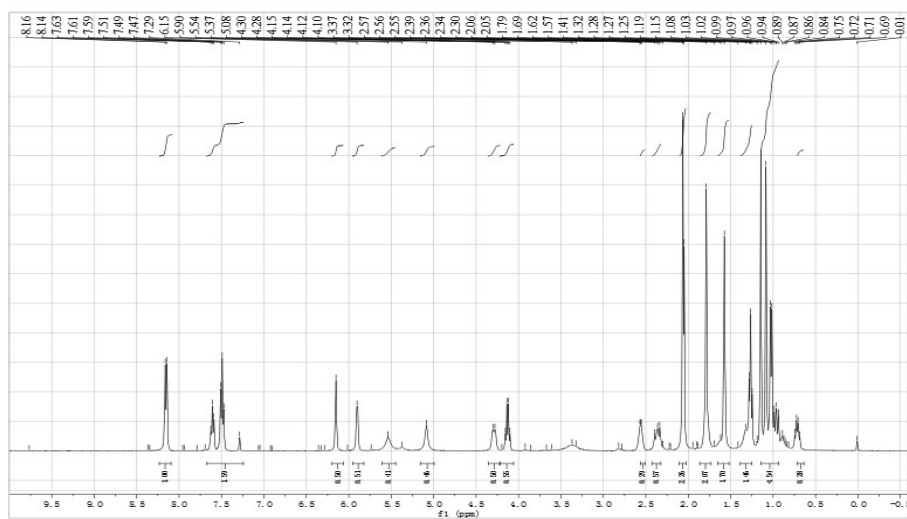


Figure 2-5. The 2D-NOESY of eupha-8,23-diene-3 $\beta$ ,11 $\beta$ -diol-7-one



### Compound 3



## Compound 4

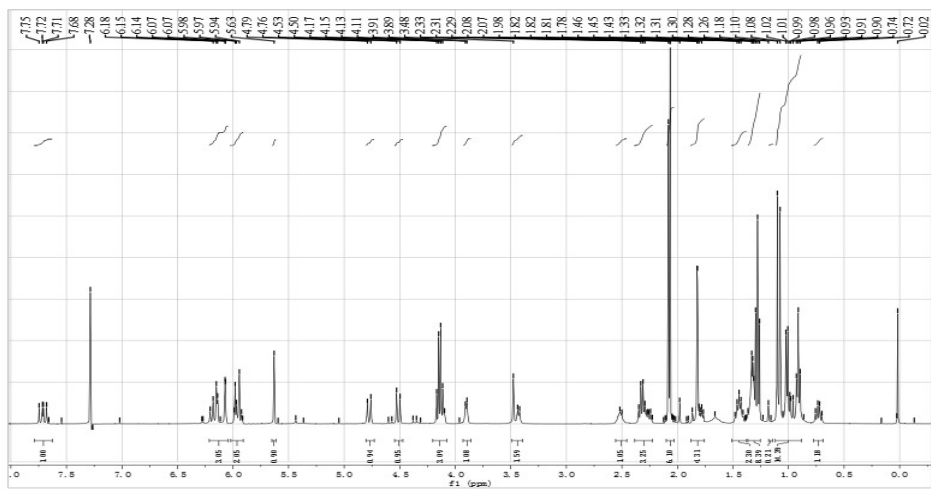


Figure 4-1. The <sup>1</sup>H-NMR of 3-O-(2'*E*,4'*Z*-decadienoyl)-20-O-acetylingenol

## Compound 5

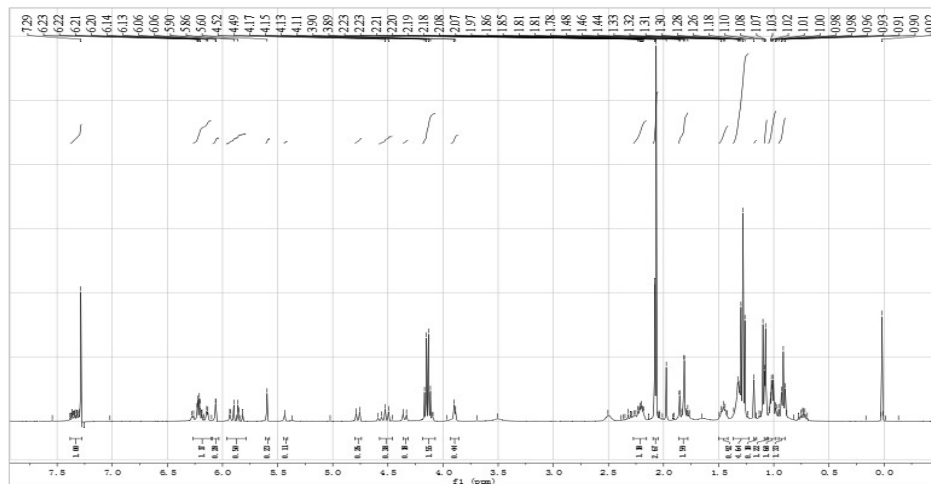


Figure 5-1. The <sup>1</sup>H-NMR of 3-O-(2'*E*,4'*E*-decadienoyl)-20-O-acetylingenol

## Compound 6

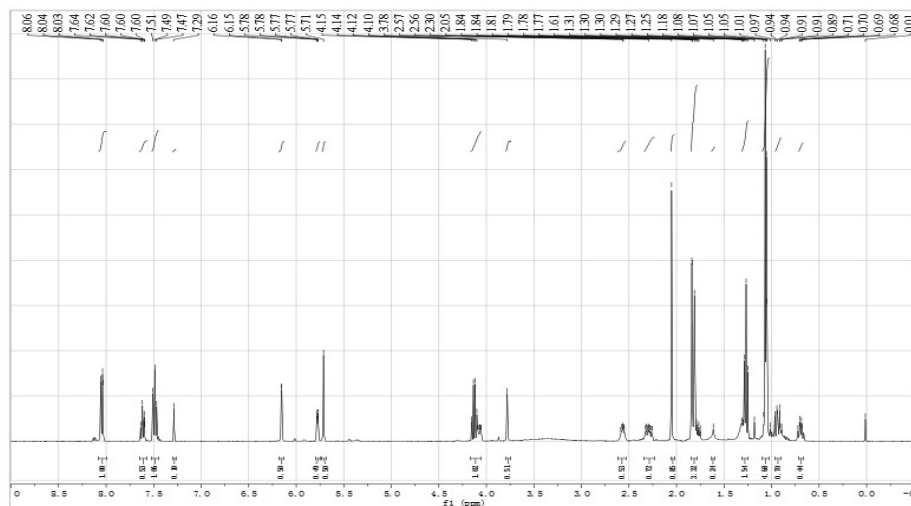


Figure 6-1. The <sup>1</sup>H-NMR of 3-O-benzoyl-20-deoxyingenol

## Compound 7

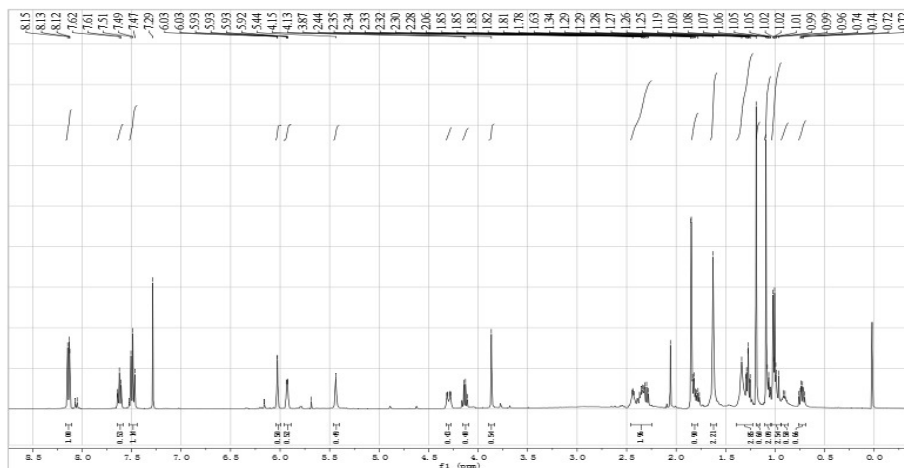


Figure 7-1. The <sup>1</sup>H-NMR of 5-O-benzoyl-20-deoxyingenol

## Compound 8

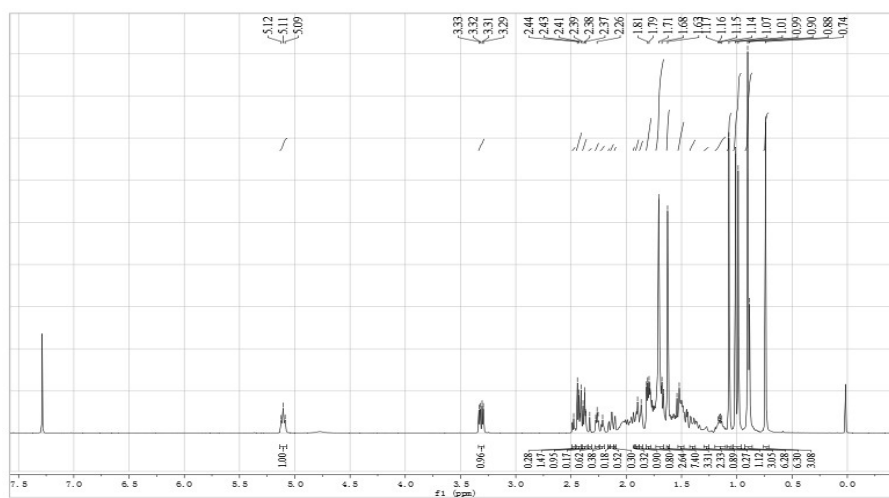


Figure 8-1. The  $^1\text{H-NMR}$  of kanseneone

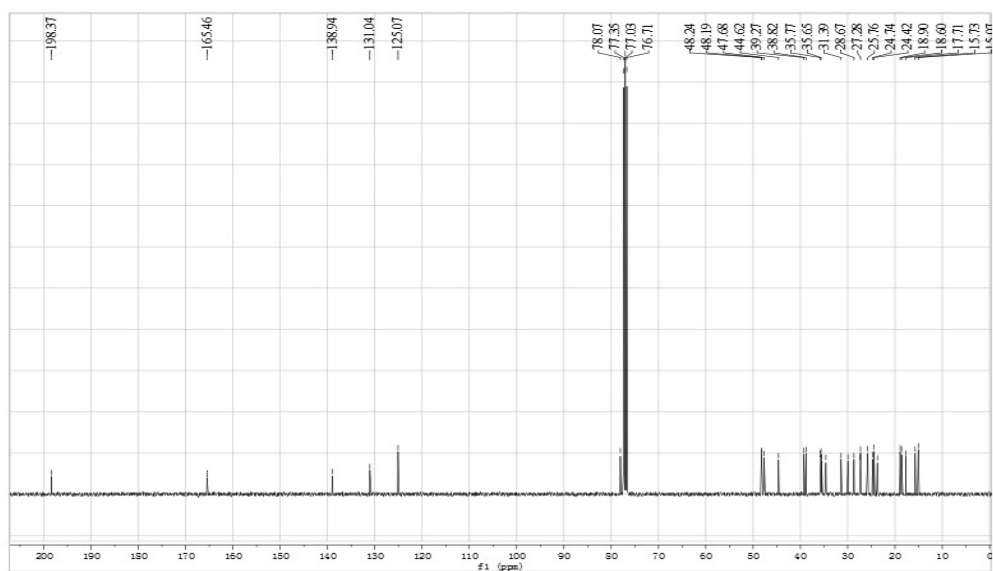


Figure 8-2. The  $^{13}\text{C-NMR}$  of kanseneone

## Compound 9

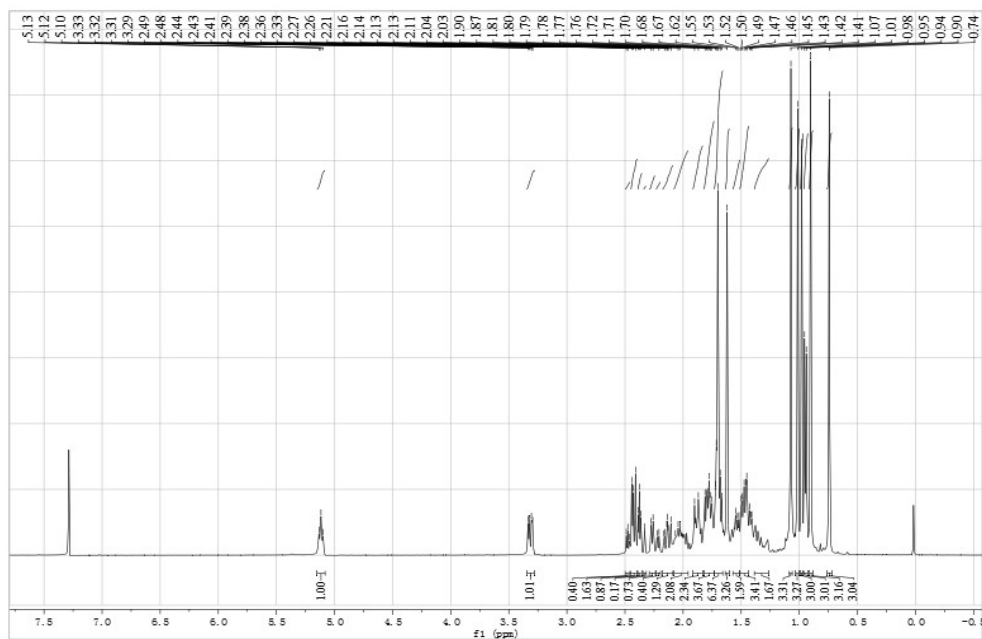


Figure 9-1. The  $^1\text{H}$ -NMR of *epi*-kansone

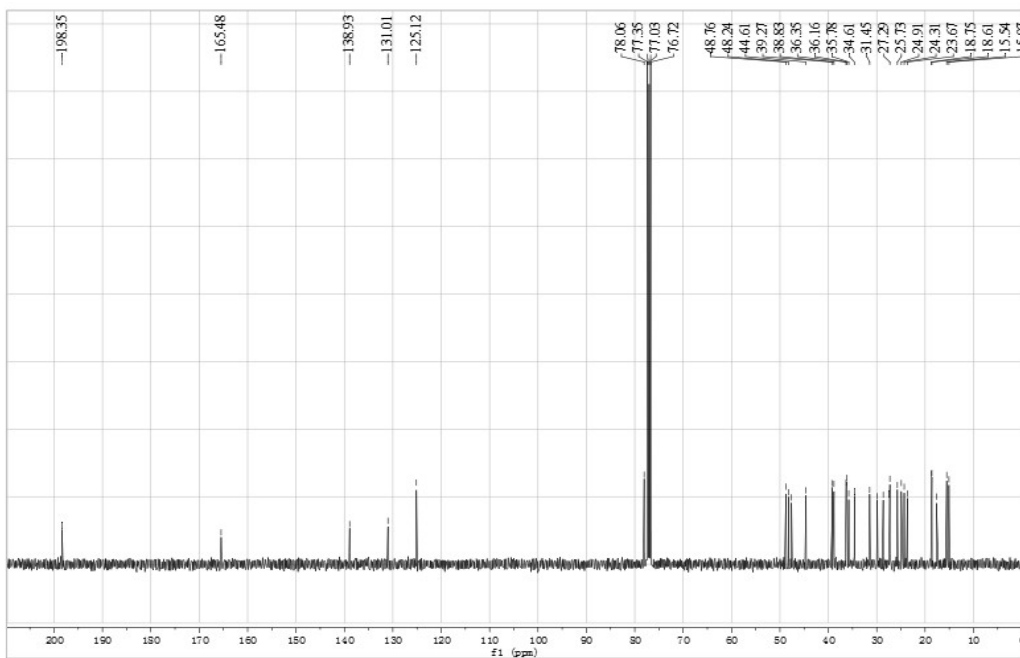


Figure 9-2. The  $^{13}\text{C}$ -NMR of *epi*-kansone

## Compound 10

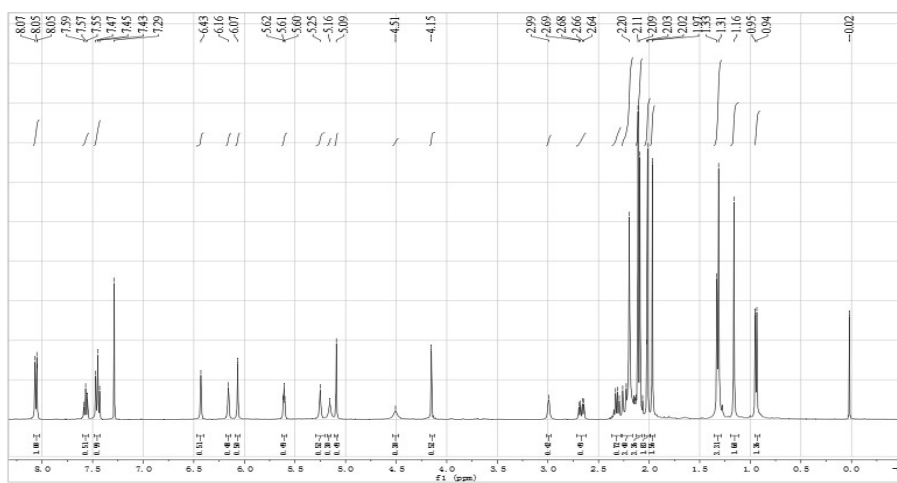


Figure 10-1. The <sup>1</sup>H-NMR of kansuinin A

## Compound 11

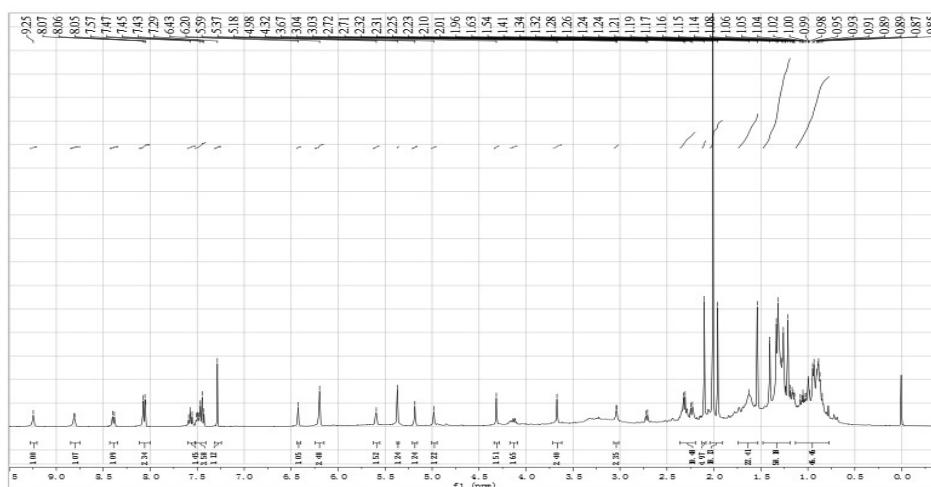


Figure 11-1. The <sup>1</sup>H-NMR of kansuinin D

## Compound 12

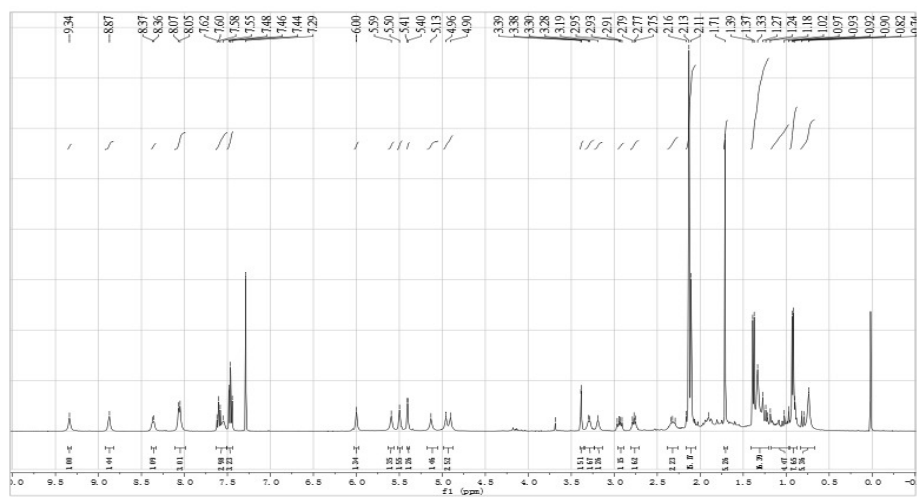


Figure 12-1. The <sup>1</sup>H-NMR of kansuinin E

## Compound 13

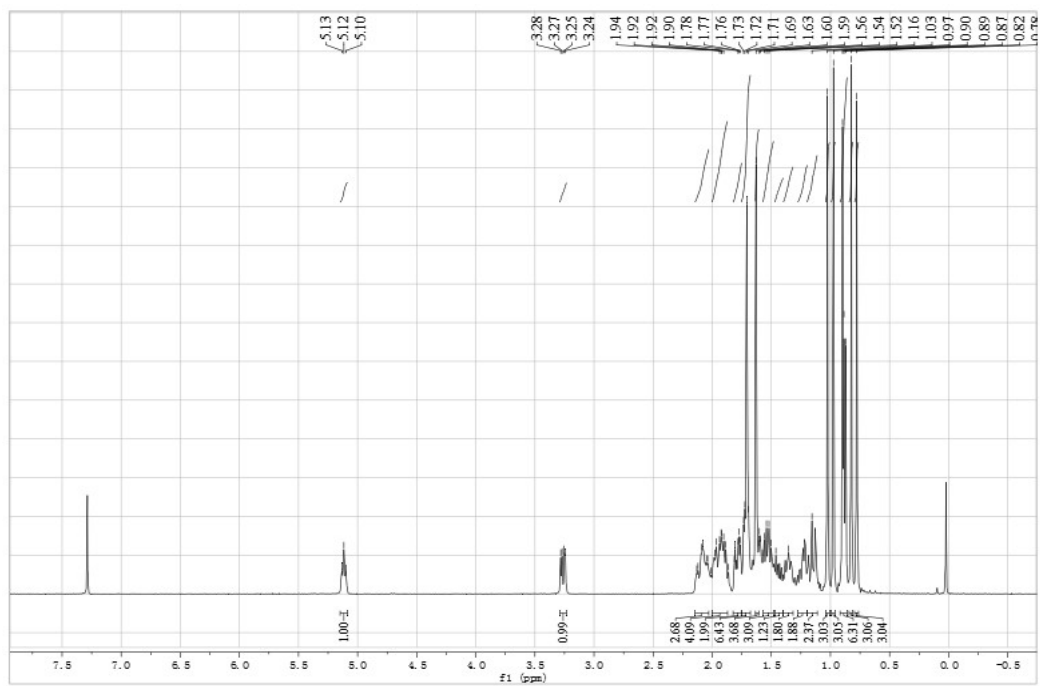


Figure 13-1. The  $^1\text{H-NMR}$  of euphol

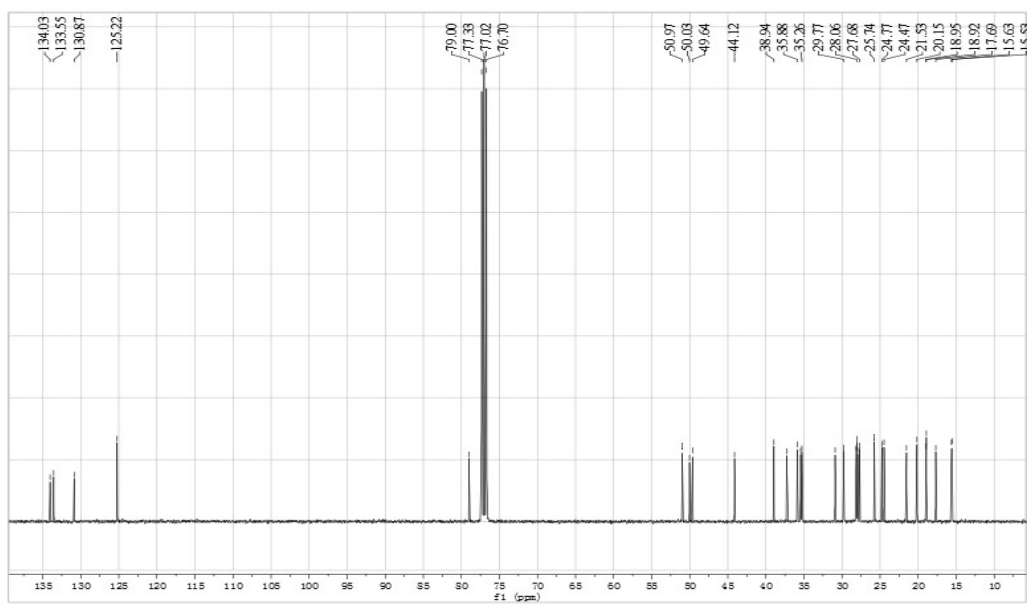


Figure 13-2. The  $^{13}\text{C-NMR}$  of euphol



## Compound 14

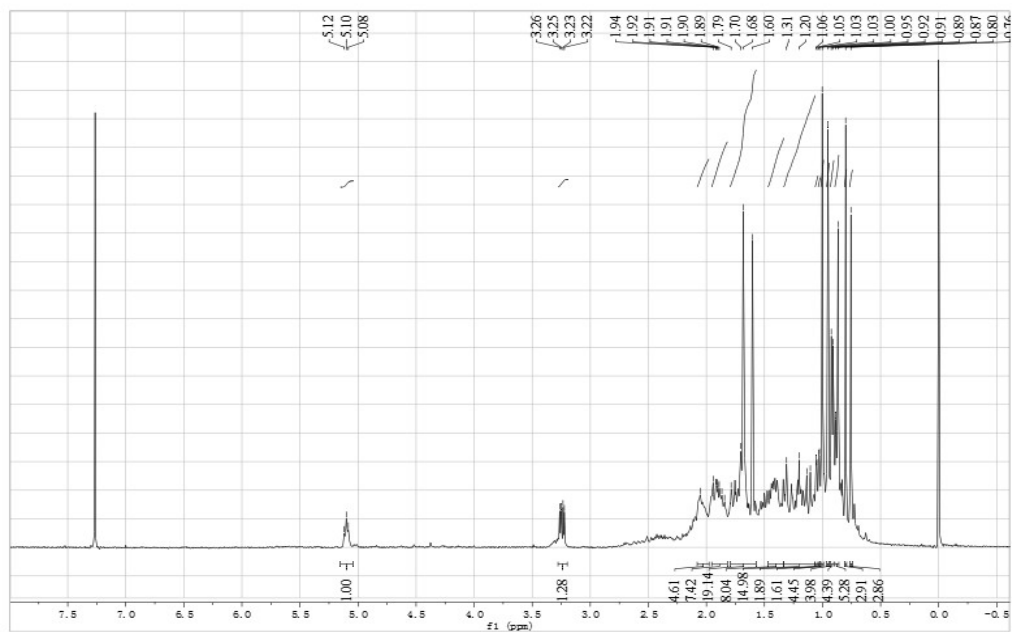


Figure 14-1. The  $^1\text{H-NMR}$  of tirucallosol

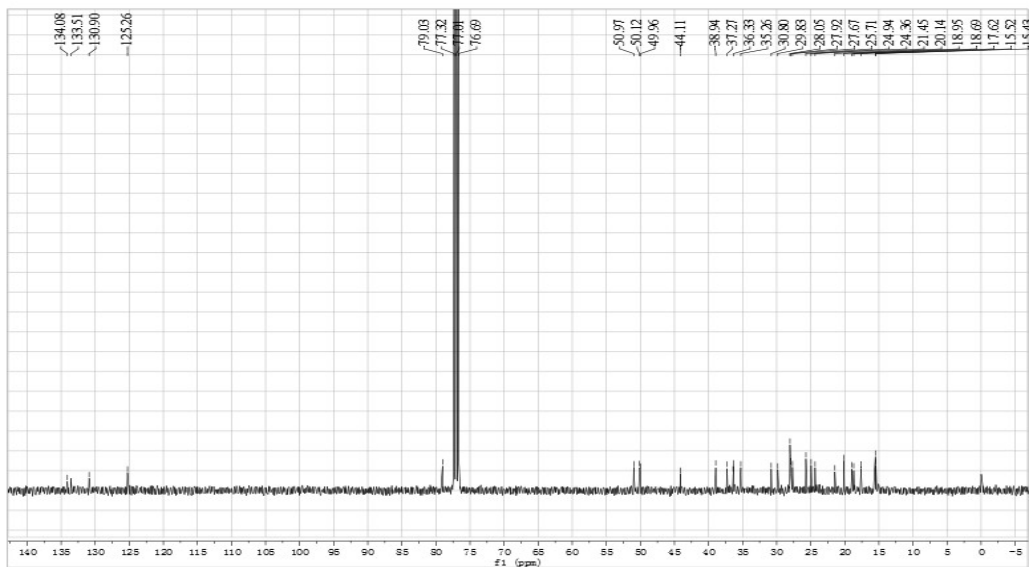


Figure 14-2. The  $^{13}\text{C-NMR}$  of tirucallosol