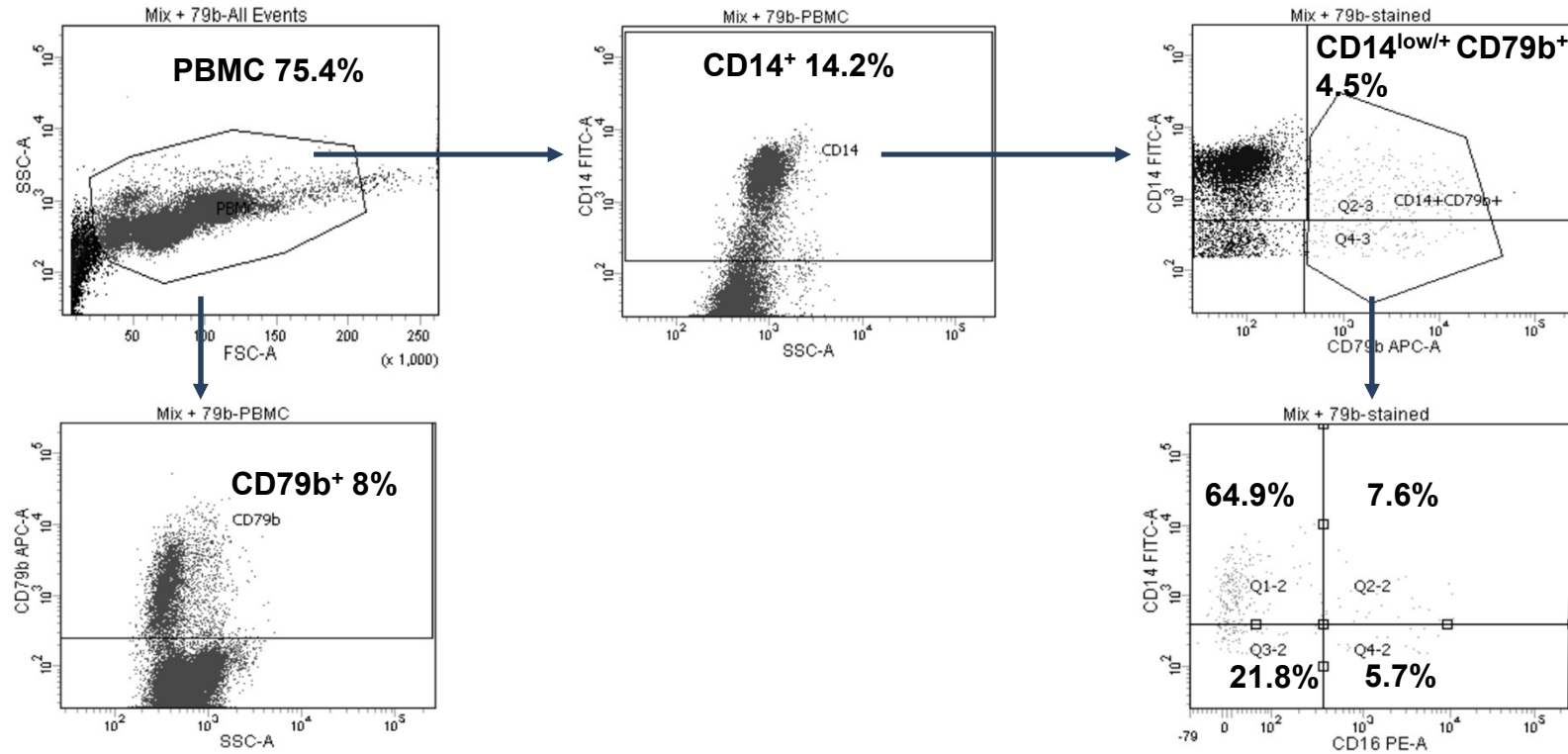


Figure S4



Analysis of the CD79b expression in PBMC by flow cytometry. Flow cytometry of freshly isolated PBMC representatively shown for one individual demonstrates the expression of CD79b in CD14^{+/low} monocytes. Note the diverse distribution of the CD79b expression in the three monocyte subgroups CD14⁺/CD16⁻ (classical monocytes; 64.9%); CD14⁺/CD16⁺ (intermediate monocytes; 7.6%) and CD14^{low/+}/CD16⁺ (non-classical monocytes; 5.7%). Using this surrogate marker for immunoglobulin expression suggests the classical monocytes as the main immunoglobulin producing subgroup.