

Figure S5A

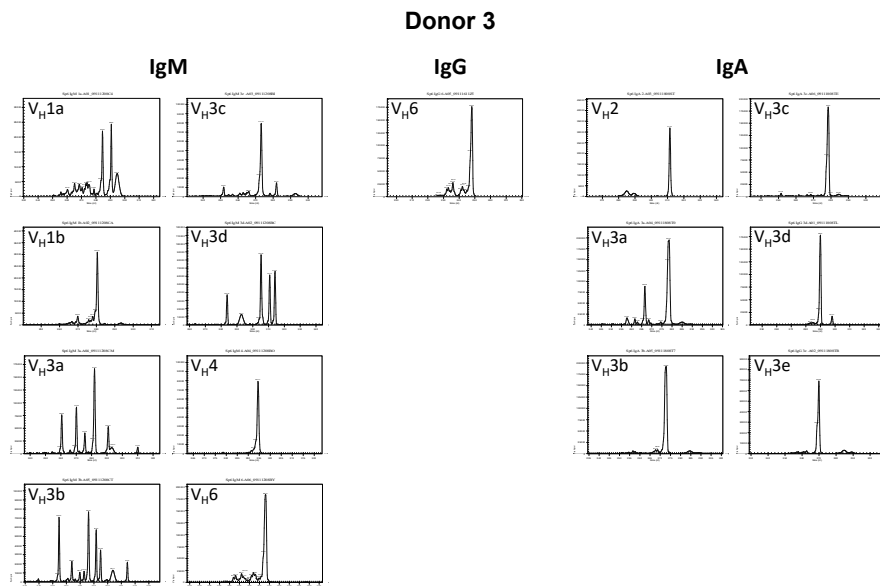
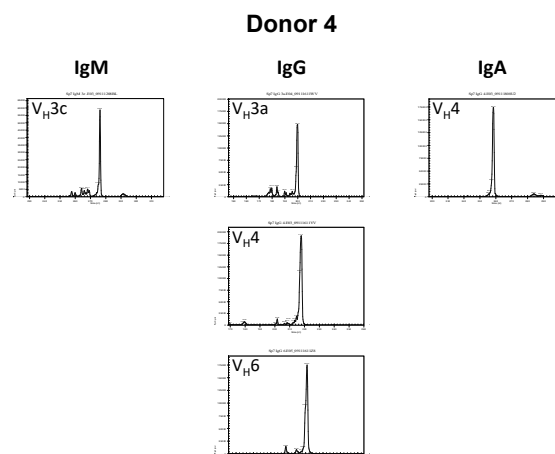


Figure S5B



**Quantitative length variant analysis of the antigen-binding CDR3 region of Donor 3 and 4.** Length variant analysis of the antigen-binding complementarity determining region 3 (CDR3) demonstrates the constitutive expression of individual-specific IgM, IgG and IgA variable heavy chain repertoires, respectively, by IFN $\gamma$  macrophages from two healthy donors (donor 3 and 4).  $V_H - C_{M/IgA}$  specific cDNA segments were amplified by RT-PCR and separated by capillary electrophoresis ("CDR3 spectratyping"). The detailed CDR3 length spectratypes for each expressed V chain are shown. Peak heights are indicated as fluorescence units.