

Figure S7A

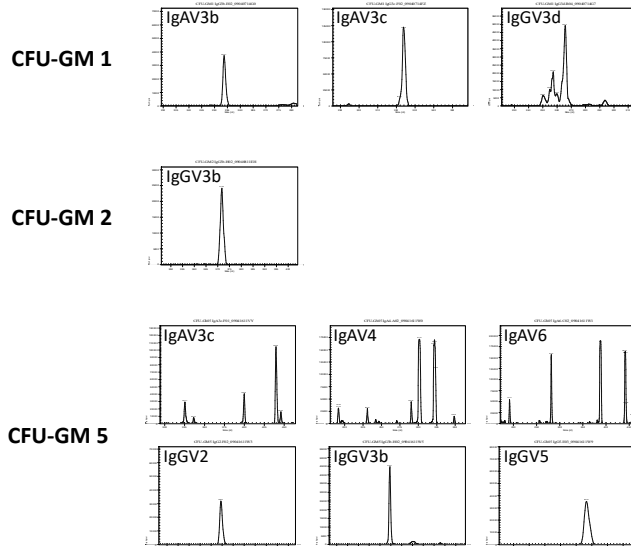
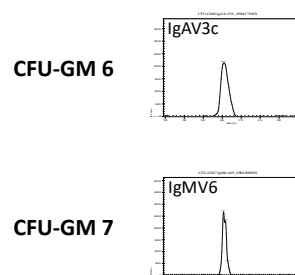


Figure S7B



Quantitative length variant analysis of the antigen-binding CDR3 region of granulocyte/ macrophage progenitor colonies (CFU-GM). Length variant analysis of the antigen-binding complementarity determining region 3 (CDR3) shows the expression of IgM, IgG and IgA variable heavy chain repertoires, respectively, by seven granulocyte/ macrophage progenitor colonies obtained from CD34⁺ progenitors of a healthy donor. V_H-C_{M/G/A} specific cDNA segments were amplified by RT-PCR and separated by capillary electrophoresis ("CDR3 spectratyping"). The detailed CDR3 length spectratypes for each expressed V chain are shown. Peak heights are indicated as fluorescence units.