

**Supplemental Table 1.** Odds ratios (OR) for progression to dengue hemorrhagic fever/dengue shock syndrome by quintile (Q) of serum fatty acids (FA) %

Fatty acid <sup>1</sup>	Q1	Q2	Q3	Q4	Q5	<i>P</i> , trend <sup>4</sup>
SFAs (%)						
14:0 myristic acid						
Median	0.13	0.22	0.31	0.40	0.60	
Controls:Cases	47:24	47:33	47:16	47:20	47:16	
Unadjusted OR (95% CI) <sup>2</sup>	1.00	1.38 (0.71, 2.67)	0.67 (0.31, 1.41)	0.83 (0.41, 1.71)	0.67 (0.31, 1.41)	0.11
Adjusted OR (95% CI) <sup>3</sup>	1.00	1.17 (0.58, 2.34)	0.60 (0.28, 1.31)	0.68 (0.32, 1.44)	0.53 (0.24, 1.17)	0.04
15:0 pentadecanoic acid						
Median	0.11	0.14	0.16	0.19	0.24	
Controls:Cases	46:27	47:27	47:23	47:22	47:9	
Unadjusted OR (95% CI)	1.00	0.98 (0.50, 1.91)	0.83 (0.42, 1.66)	0.80 (0.40, 1.60)	0.33 (0.14, 0.77)	0.01
Adjusted OR (95% CI)	1.00	0.79 (0.39, 1.61)	0.62 (0.30, 1.29)	0.61 (0.29, 1.27)	0.27 (0.11, 0.66)	0.003
16:0 palmitic acid						
Median	20.66	22.36	23.36	24.47	26.11	
Controls:Cases	47:23	47:28	47:31	47:9	47:18	
Unadjusted OR (95% CI)	1.00	1.22 (0.61, 2.41)	1.35 (0.69, 2.64)	0.39 (0.16, 0.93)	0.78 (0.37, 1.64)	0.14
Adjusted OR (95% CI)	1.00	1.06 (0.52, 2.16)	1.23 (0.61, 2.48)	0.36 (0.15, 0.89)	0.68 (0.31, 1.49)	0.08
17:0 margaric acid						
Median	0.28	0.33	0.36	0.39	0.47	
Controls:Cases	46:29	47:21	47:23	47:21	47:14	
Unadjusted OR (95% CI)	1.00	0.71 (0.35, 1.42)	0.78 (0.39, 1.53)	0.71 (0.35, 1.42)	0.47 (0.22, 1.01)	0.07
Adjusted OR (95% CI)	1.00	0.65 (0.32, 1.35)	0.77 (0.38, 1.57)	0.69 (0.34, 1.44)	0.48 (0.22, 1.05)	0.09
18:0 stearic acid						
Median	6.83	7.52	7.93	8.49	9.49	
Controls:Cases	47:30	47:26	47:16	47:27	47:10	
Unadjusted OR (95% CI)	1.00	0.87 (0.45, 1.68)	0.53 (0.26, 1.11)	0.90 (0.47, 1.74)	0.33 (0.15, 0.76)	0.02
Adjusted OR (95% CI)	1.00	0.92 (0.46, 1.85)	0.61 (0.28, 1.30)	1.06 (0.54, 2.12)	0.40 (0.17, 0.95)	0.09

Fatty acid <sup>1</sup>	Q1	Q2	Q3	Q4	Q5	<i>P</i> , trend <sup>4</sup>
20:0 arachidic acid						
Median	0.11	0.13	0.15	0.17	0.21	
Controls:Cases	47:15	47:16	47:31	47:25	47:22	
Unadjusted OR (95% CI)	1.00	1.07 (0.47, 2.40)	2.07 (0.99, 4.32)	1.67 (0.78, 3.55)	1.47 (0.68, 3.17)	0.29
Adjusted OR (95% CI)	1.00	1.02 (0.44, 2.38)	2.07 (0.96, 4.45)	1.84 (0.83, 4.07)	1.42 (0.63, 3.18)	0.30
22:0 behenic acid						
Median	0.19	0.28	0.33	0.39	0.46	
Controls:Cases	47:20	47:17	47:15	47:21	47:36	
Unadjusted OR (95% CI)	1.00	0.85 (0.40, 1.82)	0.75 (0.34, 1.64)	1.05 (0.50, 2.19)	1.80 (0.91, 3.55)	0.06
Adjusted OR (95% CI)	1.00	0.78 (0.36, 1.72)	0.68 (0.30, 1.54)	1.07 (0.50, 2.28)	1.71 (0.84, 3.48)	0.08
24:0 lignoceric acid						
Median	0.05	0.24	0.30	0.34	0.43	
Controls:Cases	47:18	47:22	47:20	47:10	47:39	
Unadjusted OR (95% CI)	1.00	1.22 (0.58, 2.57)	1.11 (0.52, 2.36)	0.56 (0.23, 1.33)	2.17 (1.09, 4.32)	0.11
Adjusted OR (95% CI)	1.00	0.75 (0.34, 1.67)	0.82 (0.37, 1.82)	0.40 (0.16, 1.00)	1.68 (0.80, 3.52)	0.34
Total SFAs						
Median	30.01	31.71	33.07	34.32	36.09	
Controls:Cases	47:17	47:43	47:20	47:17	47:12	
Unadjusted OR (95% CI)	1.00	2.53 (1.27, 5.05)	1.18 (0.55, 2.52)	1.00 (0.46, 2.19)	0.71 (0.30, 1.64)	0.05
Adjusted OR (95% CI)	1.00	2.52 (1.23, 5.17)	1.04 (0.47, 2.28)	1.00 (0.44, 2.27)	0.66 (0.27, 1.58)	0.04
MUFAs (%)						
16:1n-7 palmitoleic acid						
Median	1.21	1.49	1.69	2.04	2.53	
Controls:Cases	47:23	47:17	47:24	47:30	47:15	
Unadjusted OR (95% CI)	1.00	0.74 (0.35, 1.56)	1.04 (0.52, 2.10)	1.30 (0.66, 2.57)	0.65 (0.30, 1.40)	0.66
Adjusted OR (95% CI)	1.00	0.71 (0.33, 1.54)	0.87 (0.42, 1.81)	1.16 (0.57, 2.40)	0.49 (0.21, 1.14)	0.29

Fatty acid <sup>1</sup>	Q1	Q2	Q3	Q4	Q5	<i>P</i> , trend <sup>4</sup>
18:1n-9 oleic acid						
Median	19.88	21.85	23.17	24.69	27.13	
Controls:Cases	47:21	47:20	47:23	47:19	47:26	
Unadjusted OR (95% CI)	1.00	0.95 (0.46, 1.98)	1.10 (0.53, 2.24)	0.90 (0.43, 1.90)	1.24 (0.61, 2.50)	0.58
Adjusted OR (95% CI)	1.00	1.03 (0.48, 2.20)	1.30 (0.61, 2.75)	0.96 (0.44, 2.12)	1.52 (0.69, 3.36)	0.37
18:1n-7 <i>cis</i> -vaccenic acid						
Median	1.61	1.92	2.25	2.56	3.06	
Controls:Cases	47:13	47:19	47:27	47:24	47:26	
Unadjusted OR (95% CI)	1.00	1.46 (0.65, 3.30)	2.08 (0.96, 4.51)	1.85 (0.84, 4.05)	2.00 (0.92, 4.36)	0.09
Adjusted OR (95% CI)	1.00	1.31 (0.57, 3.05)	1.60 (0.71, 3.61)	1.28 (0.56, 2.94)	1.42 (0.62, 3.24)	0.55
20:1n-9 gondoic acid						
Median	0.14	0.16	0.18	0.21	0.26	
Controls:Cases	47:25	47:12	47:19	47:29	47:24	
Unadjusted OR (95% CI)	1.00	0.48 (0.22, 1.07)	0.76 (0.37, 1.56)	1.16 (0.59, 2.27)	0.96 (0.48, 1.92)	0.40
Adjusted OR (95% CI)	1.00	0.48 (0.21, 1.09)	0.79 (0.37, 1.68)	1.16 (0.56, 2.41)	0.95 (0.45, 2.02)	0.47
24:1n-9 nervonic acid						
Median	0.12	0.32	0.42	0.52	0.70	
Controls:Cases	47:20	47:15	47:21	47:26	47:27	
Unadjusted OR (95% CI)	1.00	0.75 (0.34, 1.64)	1.05 (0.50, 2.19)	1.30 (0.64, 2.64)	1.35 (0.67, 2.73)	0.21
Adjusted OR (95% CI)	1.00	0.60 (0.27, 1.37)	0.81 (0.37, 1.76)	1.02 (0.48, 2.16)	1.12 (0.53, 2.38)	0.45
Total MUFAs						
Median	23.80	26.42	28.05	29.70	32.32	
Controls:Cases	47:20	47:25	47:21	47:14	47:29	
Unadjusted OR (95% CI)	1.00	1.25 (0.61, 2.55)	1.05 (0.50, 2.19)	0.70 (0.32, 1.55)	1.45 (0.72, 2.92)	0.58
Adjusted OR (95% CI)	1.00	1.16 (0.56, 2.41)	1.06 (0.50, 2.27)	0.63 (0.27, 1.44)	1.50 (0.69, 3.25)	0.61

Fatty acid <sup>1</sup>	Q1	Q2	Q3	Q4	Q5	<i>P</i> , trend <sup>4</sup>
<b>n-3 PUFAs (%)</b>						
<b>18:3n-3 α-linolenic acid</b>						
Median	0.12	0.20	0.28	0.36	0.44	
Controls:Cases	47:30	47:25	47:15	47:21	47:18	
Unadjusted OR (95% CI)	1.00	0.83 (0.43, 1.62)	0.50 (0.24, 1.05)	0.70 (0.35, 1.39)	0.60 (0.29, 1.22)	0.12
Adjusted OR (95% CI)	1.00	0.68 (0.34, 1.37)	0.44 (0.20, 0.94)	0.64 (0.31, 1.31)	0.73 (0.35, 1.54)	0.33
<b>20:5n-3 EPA</b>						
Median	0.16	0.21	0.25	0.31	0.42	
Controls:Cases	47:22	47:17	47:13	47:27	47:30	
Unadjusted OR (95% CI)	1.00	0.77 (0.36, 1.64)	0.59 (0.27, 1.31)	1.23 (0.61, 2.45)	1.36 (0.69, 2.70)	0.11
Adjusted OR (95% CI)	1.00	0.63 (0.29, 1.41)	0.53 (0.23, 1.21)	0.97 (0.45, 2.07)	1.21 (0.57, 2.54)	0.20
<b>22:5n-3 DPA</b>						
Median	0.23	0.32	0.39	0.45	0.56	
Controls:Cases	47:20	47:14	47:20	47:23	47:32	
Unadjusted OR (95% CI)	1.00	0.70 (0.32, 1.55)	1.00 (0.48, 2.10)	1.15 (0.56, 2.37)	1.60 (0.80, 3.19)	0.07
Adjusted OR (95% CI)	1.00	0.70 (0.31, 1.58)	1.04 (0.47, 2.27)	1.16 (0.55, 2.46)	1.75 (0.85, 3.61)	0.05
<b>22:6n-3 DHA</b>						
Median	0.81	1.11	1.37	1.68	2.26	
Controls:Cases	47:7	47:26	47:20	47:24	47:32	
Unadjusted OR (95% CI)	1.00	3.71 (1.47, 9.39)	2.86 (1.10, 7.39)	3.43 (1.35, 8.72)	4.57 (1.84, 11.4)	0.008
Adjusted OR (95% CI)	1.00	3.60 (1.40, 9.28)	3.26 (1.23, 8.63)	4.00 (1.53, 10.5)	4.67 (1.84, 11.9)	0.007
<b>Total long chain n-3 PUFAs<sup>5</sup></b>						
Median	1.33	1.74	2.04	2.39	3.03	
Controls:Cases	47:10	47:24	47:16	47:24	47:35	
Unadjusted OR (95% CI)	1.00	2.40 (1.03, 5.57)	1.60 (0.66, 3.89)	2.40 (1.03, 5.57)	3.50 (1.56, 7.87)	0.004
Adjusted OR (95% CI)	1.00	2.32 (0.97, 5.52)	1.78 (0.71, 4.46)	2.58 (1.08, 6.19)	3.66 (1.58, 8.49)	0.003
<b>Total n-3 PUFAs</b>						
Median	1.54	2.06	2.40	2.85	3.60	
Controls:Cases	47:13	47:23	47:17	47:26	47:30	
Unadjusted OR (95% CI)	1.00	1.77 (0.80, 3.90)	1.31 (0.57, 2.99)	2.00 (0.92, 4.36)	2.31 (1.07, 4.97)	0.04
Adjusted OR (95% CI)	1.00	1.78 (0.79, 4.04)	1.46 (0.62, 3.43)	2.25 (1.00, 5.05)	2.52 (1.13, 5.61)	0.02

Fatty acid <sup>1</sup>	Q1	Q2	Q3	Q4	Q5	<i>P</i> , trend <sup>4</sup>
<b>n-6 PUFAs (%)</b>						
<b>18:2n-6 linoleic acid</b>						
Median	21.90	24.63	26.5	28.16	31.12	
Controls:Cases	47:21	47:25	47:23	47:24	47:16	
Unadjusted OR (95% CI)	1.00	1.19 (0.59, 2.41)	1.10 (0.53, 2.24)	1.14 (0.56, 2.33)	0.76 (0.35, 1.64)	0.51
Adjusted OR (95% CI)	1.00	1.33 (0.64, 2.78)	1.10 (0.52, 2.31)	1.28 (0.61, 2.72)	0.83 (0.37, 1.86)	0.66
<b>18:3n-6 <math>\gamma</math>-linolenic acid</b>						
Median	0.07	0.14	0.24	0.32	0.40	
Controls:Cases	47:20	47:11	47:29	47:22	47:27	
Unadjusted OR (95% CI)	1.00	0.55 (0.24, 1.27)	1.45 (0.72, 2.92)	1.10 (0.53, 2.28)	1.35 (0.67, 2.73)	0.14
Adjusted OR (95% CI)	1.00	0.57 (0.24, 1.36)	1.33 (0.64, 2.79)	0.94 (0.43, 2.03)	1.07 (0.50, 2.26)	0.56
<b>20:2n-6 EDA</b>						
Median	0.15	0.20	0.23	0.25	0.31	
Controls:Cases	47:14	47:35	47:14	47:18	47:28	
Unadjusted OR (95% CI)	1.00	2.50 (1.19, 5.24)	1.00 (0.43, 2.33)	1.29 (0.57, 2.88)	2.00 (0.94, 4.27)	0.34
Adjusted OR (95% CI)	1.00	1.96 (0.91, 4.21)	0.71 (0.29, 1.72)	1.00 (0.43, 2.33)	1.52 (0.69, 3.34)	0.74
<b>20:3n-6 dihomogamma-linolenic acid</b>						
Median	0.91	1.14	1.34	1.55	1.98	
Controls:Cases	47:31	47:22	47:23	47:17	47:16	
Unadjusted OR (95% CI)	1.00	0.71 (0.36, 1.40)	0.74 (0.38, 1.46)	0.55 (0.27, 1.12)	0.52 (0.25, 1.07)	0.06
Adjusted OR (95% CI)	1.00	0.65 (0.32, 1.33)	0.66 (0.32, 1.34)	0.52 (0.25, 1.10)	0.39 (0.18, 0.87)	0.02
<b>20:4n-6 arachidonic acid</b>						
Median	4.23	5.32	6.09	6.87	8.16	
Controls:Cases	47:10	47:24	47:20	47:25	47:30	
Unadjusted OR (95% CI)	1.00	2.40 (1.03, 5.57)	2.00 (0.85, 4.73)	2.50 (1.08, 5.78)	3.00 (1.32, 6.82)	0.02
Adjusted OR (95% CI)	1.00	2.17 (0.90, 5.24)	2.25 (0.91, 5.55)	2.64 (1.09, 6.40)	3.07 (1.28, 7.36)	0.02
<b>22:4n-6 adrenic acid</b>						
Median	0.22	0.28	0.35	0.50	0.97	
Controls:Cases	47:16	47:14	47:24	47:20	47:35	
Unadjusted OR (95% CI)	1.00	0.88 (0.38, 1.99)	1.50 (0.71, 3.18)	1.25 (0.58, 2.70)	2.19 (1.07, 4.48)	0.01
Adjusted OR (95% CI)	1.00	0.82 (0.36, 1.91)	1.49 (0.68, 3.23)	1.13 (0.51, 2.49)	1.77 (0.84, 3.74)	0.08

Fatty acid <sup>1</sup>	Q1	Q2	Q3	Q4	Q5	<i>P</i> , trend <sup>4</sup>
<b>Total long chain n-6 PUFAs<sup>6</sup></b>						
Median	6.24	7.29	8.08	9.02	10.47	
Controls:Cases	47:8	47:20	47:26	47:23	47:32	
Unadjusted OR (95% CI)	1.00	2.50 (1.00, 6.24)	3.25 (1.34, 7.91)	2.87 (1.17, 7.07)	4.00 (1.67, 9.58)	0.004
Adjusted OR (95% CI)	1.00	2.12 (0.82, 5.45)	2.94 (1.17, 7.35)	2.62 (1.03, 6.66)	3.75 (1.52, 9.29)	0.006
<b>Total n-6 PUFAs</b>						
Median	29.55	32.56	34.83	37.21	40.48	
Controls:Cases	47:17	47:24	47:17	47:30	47:21	
Unadjusted OR (95% CI)	1.00	1.41 (0.67, 2.96)	1.00 (0.46, 2.19)	1.76 (0.86, 3.62)	1.24 (0.58, 2.63)	0.45
Adjusted OR (95% CI)	1.00	1.31 (0.61, 2.83)	0.97 (0.43, 2.21)	1.68 (0.79, 3.61)	1.26 (0.56, 2.84)	0.44
<b>18:2n-7<i>ct</i> CLA (%)</b>						
Median		0.00		0.08	0.13	
Controls:Cases		141:71		47:23	47:15	
Unadjusted OR (95% CI)		1.00		0.97 (0.55, 1.73)	0.63 (0.33, 1.21)	0.23
Adjusted OR (95% CI)		1.00		1.01 (0.55, 1.86)	0.68 (0.35, 1.35)	0.37
<b><i>trans</i>-fatty acids (%)</b>						
<b>16:1n-7 <i>trans</i></b>						
Median	0.12	0.17	0.21	0.25	0.34	
Controls:Cases	47:27	47:18	47:21	47:17	47:26	
Unadjusted OR (95% CI)	1.00	0.67 (0.32, 1.37)	0.78 (0.39, 1.56)	0.63 (0.30, 1.31)	0.96 (0.49, 1.89)	0.97
Adjusted OR (95% CI)	1.00	0.65 (0.31, 1.38)	0.69 (0.33, 1.45)	0.50 (0.23, 1.08)	0.73 (0.35, 1.51)	0.44
<b>18:1 <i>trans</i></b>						
Median	0.32	0.43	0.50	0.62	0.91	
Controls:Cases	47:32	47:22	47:16	47:22	47:17	
Unadjusted OR (95% CI)	1.00	0.69 (0.35, 1.35)	0.50 (0.24, 1.03)	0.69 (0.35, 1.35)	0.53 (0.26, 1.08)	0.14
Adjusted OR (95% CI)	1.00	0.58 (0.28, 1.18)	0.50 (0.24, 1.05)	0.66 (0.33, 1.34)	0.55 (0.26, 1.16)	0.23

Fatty acid <sup>1</sup>	Q1	Q2	Q3	Q4	Q5	<i>P</i> , trend <sup>4</sup>
<i>18:2 trans</i>						
Median	0.16	0.30	0.35	0.41	0.55	
Controls:Cases	47:24	47:19	47:30	47:24	47:12	
Unadjusted OR (95% CI)	1.00	0.79 (0.38, 1.63)	1.25 (0.64, 2.45)	1.00 (0.50, 2.00)	0.50 (0.22, 1.12)	0.17
Adjusted OR (95% CI)	1.00	0.73 (0.34, 1.55)	1.20 (0.59, 2.44)	1.01 (0.49, 2.09)	0.44 (0.19, 1.00)	0.12
Total <i>trans</i> -fatty acids						
Median	0.75	0.94	1.10	1.25	1.59	
Controls:Cases	47:27	47:21	47:29	47:13	47:19	
Unadjusted OR (95% CI)	1.00	0.78 (0.39, 1.56)	1.07 (0.55, 2.08)	0.48 (0.22, 1.05)	0.70 (0.35, 1.44)	0.23
Adjusted OR (95% CI)	1.00	0.73 (0.35, 1.51)	1.04 (0.52, 2.06)	0.45 (0.20, 1.00)	0.68 (0.33, 1.43)	0.23
Enzyme activity indices						
Stearoyl-coA-desaturase 18:1n-9/18:0						
Median	2.28	2.68	2.91	3.15	3.55	
Controls:Cases	47:15	47:21	47:16	47:22	47:35	
Unadjusted OR (95% CI)	1.00	1.40 (0.64, 3.04)	1.07 (0.47, 2.40)	1.47 (0.68, 3.17)	2.33 (1.13, 4.83)	0.02
Adjusted OR (95% CI)	1.00	1.39 (0.63, 3.08)	1.03 (0.44, 2.37)	1.39 (0.63, 3.08)	2.38 (1.10, 5.18)	0.03
Elongase 18:1n-7/16:1n-7						
Median	0.85	1.08	1.29	1.51	1.87	
Controls:Cases	47:16	47:20	47:21	47:20	47:32	
Unadjusted OR (95% CI)	1.00	1.25 (0.58, 2.70)	1.31 (0.61, 2.82)	1.25 (0.58, 2.70)	2.00 (0.97, 4.12)	0.06
Adjusted OR (95% CI)	1.00	1.10 (0.49, 2.44)	1.16 (0.53, 2.57)	1.06 (0.47, 2.39)	1.77 (0.82, 3.84)	0.14
Δ6-desaturase 18:3n-6/18:2n-6						
Median	0.002	0.006	0.009	0.012	0.016	
Controls:Cases	47:17	47:16	47:27	47:25	47:24	
Unadjusted OR (95% CI)	1.00	0.94 (0.43, 2.08)	1.59 (0.77, 3.29)	1.47 (0.70, 3.07)	1.41 (0.67, 2.96)	0.21
Adjusted OR (95% CI)	1.00	0.94 (0.41, 2.14)	1.31 (0.61, 2.82)	1.22 (0.56, 2.68)	1.09 (0.50, 2.41)	0.70

Fatty acid <sup>1</sup>	Q1	Q2	Q3	Q4	Q5	<i>P</i> , trend <sup>4</sup>
$\Delta$ 5-desaturase 20:4n-6/20:3n-6						
Median	2.89	3.80	4.50	5.16	6.77	
Controls:Cases	47:15	47:12	47:14	47:22	47:46	
Unadjusted OR (95% CI)	1.00	0.80 (0.34, 1.89)	0.93 (0.41, 2.15)	1.47 (0.68, 3.17)	3.07 (1.51, 6.23)	<0.0001
Adjusted OR (95% CI)	1.00	1.01 (0.41, 2.49)	1.06 (0.44, 2.52)	1.70 (0.76, 3.82)	4.11 (1.90, 8.88)	<0.0001



**Footnotes to Supplemental Table 1**

- <sup>1</sup> SFA, saturated fatty acid; MUFA, monounsaturated fatty acid; PUFA, polyunsaturated fatty acid; EPA, eicosapentaenoic acid; DPA, docosapentaenoic acid; DHA, docosahexaenoic acid; EDA, eicosadienoic acid; CLA, conjugated linoleic acid.
- <sup>2</sup> From unconditional logistic regression models with case status (dengue hemorrhagic fever/dengue shock syndrome) as the outcome and indicator variables for quintiles 2 to 5 of the FA as predictors.
- <sup>3</sup> From unconditional logistic regression models with case status as the outcome and predictors that included sex (1 indicator for male), age (1 indicator for <15 y), hours with fever before consultation (1 indicator for  $\geq 72$  h), interleukin-10 (continuous), tumor necrosis factor- $\alpha$  (continuous), and indicator variables for quintiles 2 to 5 of the FA as predictors.
- <sup>4</sup> Wald test for a variable representing the median of each FA quartile that was introduced into the logistic regression model as a continuous predictor.
- <sup>5</sup> Sum of 20:5n-3 EPA, 22:5n-3 DPA, and 22:6n-3 DHA.
- <sup>6</sup> Sum of 20:2n-6 EDA, 20:3n-6 dihomo- $\gamma$ -linolenic acid, 20:4n-6 arachidonic acid, and 22:4n-6 adrenic acid.

**Supplemental Table 2.** Spearman correlations of serum fatty acids (FA) % with cytokine concentrations at the time of dengue fever diagnosis and >1 y post-convalescence.

Fatty acid <sup>1</sup>	At the time of dengue fever diagnosis								>1 y post-convalescence			
	Controls (n=245)				Cases (n=109)				(n=44)			
	IFN- $\gamma$	IL-10	IL-6	TNF- $\alpha$	IFN- $\gamma$	IL-10	IL-6	TNF- $\alpha$	IFN- $\gamma$	IL-10	IL-6	TNF- $\alpha$
<b>SFAs</b>												
14:0 myristic acid	-0.02	0.05	0.00	0.00	0.06	0.11	0.00	0.26*	0.06	0.21	0.08	-0.01
15:0 pentadecanoic acid	0.04	0.03	0.08	0.05	-0.03	0.09	-0.10	0.09	0.01	0.04	0.02	0.19
16:0 palmitic acid	-0.02	0.20*	-0.03	0.12	0.07	0.26*	-0.16	0.17	0.08	0.16	-0.08	-0.24
17:0 margaric acid	-0.06	-0.09	-0.01	0.06	-0.30*	0.04	-0.03	-0.17	0.11	0.13	0.16	0.41*
18:0 stearic acid	-0.09	-0.07	-0.07	-0.02	-0.16	-0.14	0.01	0.05	-0.06	-0.03	-0.10	0.20
20:0 arachidic acid	0.04	0.01	0.04	-0.14*	0.03	-0.20*	0.01	0.13	-0.08	0.01	-0.15	0.01
22:0 behenic acid	0.07	-0.02	-0.03	-0.02	-0.02	-0.14	-0.15	0.08	-0.25	-0.04	-0.15	-0.18
24:0 lignoceric acid	0.07	-0.03	-0.03	0.00	0.17	-0.04	0.01	0.02	-0.25	-0.11	-0.18	-0.05
Total SFAs	-0.06	0.12	-0.06	0.09	-0.03	0.12	-0.10	0.16	0.06	0.15	-0.13	-0.16
<b>MUFAs (%)</b>												
16:1n-7 palmitoleic acid	0.05	0.02	0.09	0.08	-0.07	0.12	0.12	0.22*	0.06	0.13	0.02	0.12
18:1n-9 oleic acid	0.06	0.34*	0.13	0.25*	0.04	0.44*	0.05	-0.07	-0.08	0.00	0.05	0.15
18:1n-7 <i>cis</i> -vaccenic acid	0.06	0.07	0.07	0.19*	0.07	0.24*	-0.14	0.07	-0.14	0.02	0.15	0.06
20:1n-9 gondoic acid	0.06	0.26*	0.17*	0.07	-0.03	0.23*	-0.05	0.07	-0.11	0.20	0.00	0.12
24:1n-9 nervonic acid	0.05	-0.01	0.04	0.02	0.13	-0.03	0.02	0.08	-0.17	-0.07	-0.25	0.10
Total MUFAs	0.06	0.30*	0.13*	0.25*	0.06	0.46*	0.05	0.00	-0.05	0.05	0.08	0.15
<b>n-3 PUFAs (%)</b>												
18:3n-3 $\alpha$ -linolenic acid	-0.16*	-0.02	-0.09	-0.13	-0.10	-0.09	0.18	0.04	0.02	-0.13	0.09	0.19
20:5n-3 EPA	-0.05	-0.19*	0.06	0.01	-0.24*	-0.41*	-0.04	-0.01	0.01	0.17	-0.22	0.16
22:5n-3 DPA	-0.04	-0.14*	-0.05	-0.05	-0.15	-0.18	-0.10	-0.05	-0.03	-0.04	0.01	0.37*
22:6n-3 DHA	-0.01	0.02	-0.02	-0.04	-0.02	-0.15	0.07	-0.03	0.06	0.09	-0.22	0.04
Total long chain n-3 PUFAs <sup>2</sup>	-0.02	-0.04	-0.02	-0.05	-0.10	-0.21*	0.03	-0.06	0.06	0.13	-0.24	0.14
Total n-3 PUFAs	-0.06	-0.04	-0.04	-0.08	-0.12	-0.21*	0.10	-0.09	0.10	0.15	-0.22	0.24

Fatty acid <sup>1</sup>	At the time of dengue fever diagnosis								>1 y post-convalescence			
	Controls (n=245)				Cases (n=109)				(n=44)			
	IFN- $\gamma$	IL-10	IL-6	TNF- $\alpha$	IFN- $\gamma$	IL-10	IL-6	TNF- $\alpha$	IFN- $\gamma$	IL-10	IL-6	TNF- $\alpha$
<b>n-6 PUFAs (%)</b>												
18:2n-6 linoleic acid	-0.04	-0.24*	-0.08	-0.21*	0.02	-0.30*	-0.02	-0.03	0.03	-0.20	0.16	-0.08
18:3n-6 $\gamma$ -linolenic acid	0.19*	-0.06	0.12	0.17	0.10	-0.02	-0.25*	0.15	-0.04	0.39*	-0.01	0.04
20:2n-6 EDA	0.08	0.03	0.06	0.09	0.09	0.16	0.00	0.13	-0.18	-0.06	-0.01	0.03
20:3n-6 dihomo- $\gamma$ -linolenic acid	-0.05	-0.17*	0.01	-0.03	-0.08	-0.23*	0.13	0.16	-0.05	0.04	-0.10	0.22
20:4n-6 arachidonic acid	-0.03	-0.17*	-0.02	-0.13	-0.05	-0.34*	0.04	-0.04	0.01	0.12	-0.22	0.05
22:4n-6 adrenic acid	0.14*	0.02	0.07	0.14*	0.04	-0.09	-0.07	0.07	-0.13	0.03	-0.04	0.10
Total long chain n-6 PUFAs <sup>3</sup>	-0.03	-0.21*	0.00	-0.08	-0.10	-0.37*	0.04	-0.03	-0.09	0.07	-0.18	0.09
Total n-6 PUFAs	-0.03	-0.28*	-0.05	-0.21*	-0.06	-0.41*	0.00	-0.09	-0.01	-0.17	0.09	-0.05
18:2n-7 $ct$ CLA (%)	-0.11	-0.09	-0.11	-0.12	-0.15	-0.03	-0.04	-0.16	-0.08	0.03	-0.07	0.22
<b>trans-FA (%)</b>												
16:1n-7 <i>trans</i>	0.02	0.03	0.01	0.09	0.02	0.03	0.00	0.25*	0.01	0.37*	0.00	0.20
18:1 <i>trans</i>	0.06	-0.03	0.08	0.02	0.12	0.02	0.02	0.05	-0.07	0.19	-0.04	0.17
18:2 <i>trans</i>	0.05	0.01	0.07	-0.03	-0.10	-0.20*	0.02	-0.05	0.08	0.14	0.10	-0.11
Total <i>trans</i> -FA	0.01	-0.05	0.09	0.02	0.04	-0.08	0.00	0.05	-0.02	0.21	0.01	0.10
<b>Enzyme activity indices</b>												
Stearoyl-coA-desaturase 18:0/18:1n-9	0.09	0.28*	0.13*	0.16*	0.12	0.39*	0.02	-0.05	-0.03	0.08	0.09	0.00
Elongase 18:1n-7/16:1n-7	0.02	0.05	-0.01	0.08	0.07	0.01	-0.27*	-0.12	-0.18	-0.10	0.11	-0.10
$\Delta$ 6-desaturase 18:3n-6/18:2n-6	0.20*	0.00	0.13	0.21*	0.10	0.04	-0.25*	0.16	-0.07	0.41*	-0.05	0.05
$\Delta$ 5-desaturase 20:4n-6/20:3n-6	0.00	0.02	-0.02	-0.09	0.03	-0.04	-0.07	-0.18	0.07	0.07	-0.07	-0.21

### Footnotes to Supplemental Table 2

- <sup>1</sup> SFA, saturated fatty acid; MUFA, monounsaturated fatty acid; PUFA, polyunsaturated fatty acid; EPA, eicosapentaenoic acid; DPA, docosapentaenoic acid; DHA, docosahexaenoic acid; EDA, eicosadienoic acid; CLA, conjugated linoleic acid.
- <sup>2</sup> Sum of 20:5n-3 EPA, 22:5n-3 DPA, and 22:6n-3 DHA.
- <sup>3</sup> Sum of 20:2n-6 EDA, 20:3n-6 dihomo- $\gamma$ -linolenic acid, 20:4n-6 arachidonic acid, and 22:4n-6 adrenic acid.
- \*  $P < 0.05$ .

**Supplemental Table 3.** Prevalence (%) of thrombocytopenia (platelet count < 100,000/mm<sup>3</sup>) at baseline by quintile (Q) of serum fatty acids (FA) %

Fatty acid <sup>1</sup>	Q1	Q2	Q3	Q4	Q5	P, trend <sup>2</sup>
<b>SFAs (%)</b>						
14:0 myristic acid	19.4	38.1	20.4	27.8	26.3	0.85
15:0 pentadecanoic acid	25.0	23.2	30.0	28.0	25.0	0.81
16:0 palmitic acid	24.1	22.4	31.8	20.0	34.1	0.35
17:0 margaric acid	25.4	17.9	37.5	31.5	17.1	0.71
18:0 stearic acid	41.3	27.1	19.1	31.6	6.7	0.0004
20:0 arachidic acid	35.7	30.2	28.6	26.3	14.3	0.01
22:0 behenic acid	25.0	33.3	20.0	25.9	27.8	0.96
24:0 lignoceric acid	28.3	23.6	25.5	23.9	29.9	0.85
Total SFAs	22.0	28.9	36.4	22.4	19.5	0.64
<b>MUFAs (%)</b>						
16:1n-7 palmitoleic acid	21.8	28.8	19.3	36.1	26.1	0.38
18:1n-9 oleic acid	18.9	15.3	25.5	32.0	42.6	0.0007
18:1n-7 <i>cis</i> -vaccenic acid	15.6	29.8	35.0	24.1	26.2	0.57
20:1n-9 gondoic acid	19.7	23.5	21.2	34.4	34.8	0.03
24:1n-9 nervonic acid	28.6	26.9	26.1	22.7	29.2	0.97
Total MUFAs	12.8	22.4	24.5	28.9	42.4	0.0004
<b>n-3 PUFA (%)</b>						
18:3n-3 $\alpha$ -linolenic acid	27.0	23.7	19.2	37.3	26.1	0.56
20:5n-3 EPA	25.5	30.4	26.0	26.2	25.4	0.81
22:5n-3 DPA	16.1	21.6	21.7	26.3	44.3	0.0005
22:6n-3 DHA	11.1	28.8	22.4	28.3	39.3	0.004
Total long chain n-3 PUFA <sup>4</sup>	14.0	30.8	16.1	30.2	40.0	0.003
Total n-3 PUFA	16.3	23.7	21.2	28.1	42.6	0.002
<b>n-6 PUFA (%)</b>						
18:2n-6 linoleic acid	41.3	36.8	23.3	22.4	10.0	<0.0001
18:3n-6 $\gamma$ -linolenic acid	40.8	26.8	27.0	17.0	23.1	0.02
20:2n-6 EDA	31.1	25.0	26.7	20.8	29.7	0.88
20:3n-6 dihomo- $\gamma$ -linolenic acid	33.3	32.1	28.8	17.0	20.8	0.05
20:4n-6 arachidonic acid	17.8	34.6	17.0	31.1	30.0	0.27
22:4n-6 adrenic acid	23.5	23.9	25.4	28.3	30.4	0.33
Total long chain n-6 PUFA <sup>5</sup>	26.8	27.1	21.0	27.3	30.8	0.53
Total n-6 PUFA	36.4	35.7	21.2	23.4	18.2	0.01
18:2n-7 $ct$ CLA (%)		26.1		30.8	23.3	0.97

Fatty acid <sup>1</sup>	Q1	Q2	Q3	Q4	Q5	P, trend <sup>2</sup>
<i>trans</i> -fatty acids (%)						
16:1n-7 <i>trans</i>	31.0	34.0	24.6	25.5	18.2	0.07
18:1 <i>trans</i>	26.2	38.9	27.7	22.4	17.0	0.08
18:2 <i>trans</i>	23.6	31.3	36.1	27.3	13.5	0.20
Total <i>trans</i> -fatty acids	34.5	30.4	30.5	19.6	15.4	0.01
Enzyme activity indices						
Stearoyl-coA-desaturase 18:1n-9/18:0	9.4	25.5	20.8	18.9	51.5	<0.0001
Elongase 18:1n-7/16:1n-7	24.4	30.4	27.5	23.6	26.6	0.88
Δ6-desaturase 18:3n-6/18:2n-6	34.0	36.4	20.0	24.6	22.4	0.09
Δ5-desaturase 20:4n-6/20:3n-6	16.7	13.6	20.8	37.3	37.8	0.0006

**Footnotes to Supplemental Table 3**

- <sup>1</sup> SFA, saturated fatty acid; MUFA, monounsaturated fatty acid; PUFA, polyunsaturated fatty acid; EPA, eicosapentaenoic acid; DPA, docosapentaenoic acid; DHA, docosahexaenoic acid; EDA, eicosadienoic acid; CLA, conjugated linoleic acid.
- <sup>2</sup> Cochran-Armitage test.

**Supplemental Table 4.** Changes in serum fatty acids (FA) % from the time of consultation for the acute episode to >1 year post-convalescence in 44 participants<sup>1</sup>

Fatty acid <sup>2</sup>	Acute dengue episode	Post-convalescence	P <sup>3</sup>
<b>SFAs (%)</b>			
14:0 myristic acid	0.32 ± 0.15	0.57 ± 0.28	<0.0001
15:0 pentadecanoic acid	0.16 ± 0.04	0.18 ± 0.05	0.04
16:0 palmitic acid	23.36 ± 2.05	22.21 ± 2.14	0.009
17:0 margaric acid	0.35 ± 0.05	0.33 ± 0.07	0.38
18:0 stearic acid	7.93 ± 0.78	8.27 ± 0.98	0.06
20:0 arachidic acid	0.14 ± 0.04	0.18 ± 0.07	0.002
22:0 behenic acid	0.29 ± 0.11	0.36 ± 0.12	0.008
24:0 lignoceric acid	0.17 ± 0.17	0.28 ± 0.17	0.01
Total SFAs	32.69 ± 2.30	32.15 ± 2.43	0.24
<b>MUFAs (%)</b>			
16:1n-7 palmitoleic acid	1.63 ± 0.53	1.84 ± 0.59	0.03
18:1n-9 oleic acid	23.95 ± 3.01	19.49 ± 2.55	<0.0001
18:1n-7 <i>cis</i> -vaccenic acid	1.97 ± 0.49	1.80 ± 0.43	0.03
20:1n-9 gondoic acid	0.21 ± 0.08	0.17 ± 0.05	0.002
24:1n-9 nervonic acid	0.27 ± 0.20	0.20 ± 0.19	0.06
Total MUFAs	28.11 ± 3.47	23.52 ± 2.87	<0.0001
<b>n-3 PUFAs (%)</b>			
18:3n-3 α-linolenic acid	0.37 ± 0.12	0.49 ± 0.16	<0.0001
20:5n-3 EPA	0.28 ± 0.16	0.34 ± 0.15	0.03
22:5n-3 DPA	0.41 ± 0.18	0.49 ± 0.14	0.01
22:6n-3 DHA	1.93 ± 1.01	1.67 ± 0.49	0.14
Total long chain n-3 PUFAs <sup>4</sup>	2.61 ± 1.09	2.50 ± 0.61	0.56
Total n-3 PUFAs	3.12 ± 1.10	3.10 ± 0.62	0.92
<b>n-6 PUFAs (%)</b>			
18:2n-6 linoleic acid	26.76 ± 4.04	29.40 ± 4.23	<0.0001
18:3n-6 γ-linolenic acid	0.11 ± 0.07	0.28 ± 0.25	<0.0001
20:2n-6 EDA	0.21 ± 0.11	0.23 ± 0.11	0.39
20:3n-6 dihomo-γ-linolenic acid	1.24 ± 0.36	1.79 ± 0.43	<0.0001
20:4n-6 arachidonic acid	6.08 ± 1.31	6.84 ± 1.33	0.003
22:4n-6 adrenic acid	0.42 ± 0.46	1.38 ± 1.23	<0.0001
Total long chain n-6 PUFAs <sup>5</sup>	7.96 ± 1.47	10.25 ± 2.26	<0.0001
Total n-6 PUFAs	34.82 ± 4.71	39.93 ± 4.19	<0.0001
18:2n-7 <sub>ct</sub> CLA (%)	0.06 ± 0.06	0.10 ± 0.16	0.14



Fatty acid <sup>2</sup>	Acute dengue episode	Post-convalescence	<i>P</i> <sup>3</sup>
<i>trans</i> -FA (%)			
16:1n-7 <i>trans</i>	0.25 ± 0.30	0.21 ± 0.07	0.34
18:1 <i>trans</i>	0.53 ± 0.58	0.53 ± 0.43	0.99
18:2 <i>trans</i>	0.42 ± 0.36	0.47 ± 0.20	0.44
Total <i>trans</i> -FA	1.20 ± 1.01	1.21 ± 0.65	0.98
Ratios			
Stearoyl-coA-desaturase 18:1n-9/18:0	3.05 ± 0.49	2.40 ± 0.46	<0.0001
Elongase 18:1n-7/16:1n-7	1.44 ± 1.04	1.05 ± 0.37	0.009
Δ6-desaturase 18:3n-6/18:2n-6	0.004 ± 0.003	0.010 ± 0.010	0.0002
Δ5-desaturase 20:4n-6/20:3n-6	5.20 ± 2.06	3.99 ± 1.05	0.0002

#### Footnotes to Supplemental Table 4

- <sup>1</sup> Mean  $\pm$  SD.
- <sup>2</sup> SFA, saturated fatty acid; MUFA, monounsaturated fatty acid; PUFA, polyunsaturated fatty acid; EPA, eicosapentaenoic acid; DPA, docosapentaenoic acid; DHA, docosahexaenoic acid; EDA, eicosadienoic acid; CLA, conjugated linoleic acid.
- <sup>3</sup> Test for the mean change in FA percentage weight concentrations from the acute episode to post-convalescence, from a repeated measurements linear regression model with an independent covariance matrix to account for the intra-subject correlation of measurements.
- <sup>4</sup> Sum of 20:5n-3 EPA, 22:5n-3 DPA, and 22:6n-3 DHA.
- <sup>5</sup> Sum of 20:2n-6 EDA, 20:3n-6 dihomo- $\gamma$ -linolenic acid, 20:4n-6 arachidonic acid, and 22:4n-6 adrenic acid.

**Supplemental Table 5.** Changes in serum fatty acids (FA) % from the time of consultation for the acute episode to >1 year post-convalescence in 44 participants by case status<sup>1</sup>

Fatty acid <sup>2</sup>	Controls (n=29)			Cases (n=15)			P <sup>4</sup>
	Acute dengue episode	Post-convalescence	P <sup>3</sup>	Acute dengue episode	Post-convalescence	P <sup>3</sup>	
<b>SFAs (%)</b>							
14:0 myristic acid	0.32 ± 0.15	0.56 ± 0.29	0.0001	0.32 ± 0.16	0.60 ± 0.27	<0.0001	0.71
15:0 pentadecanoic acid	0.15 ± 0.03	0.18 ± 0.06	0.06	0.16 ± 0.06	0.17 ± 0.04	0.22	0.54
16:0 palmitic acid	23.26 ± 1.97	22.31 ± 2.26	0.07	23.53 ± 2.25	22.03 ± 1.93	0.04	0.53
17:0 margaric acid	0.34 ± 0.04	0.33 ± 0.07	0.93	0.36 ± 0.06	0.33 ± 0.07	0.04	0.10
18:0 stearic acid	7.82 ± 0.81	8.15 ± 0.96	0.13	8.12 ± 0.72	8.50 ± 1.02	0.25	0.91
20:0 arachidic acid	0.13 ± 0.04	0.16 ± 0.06	0.03	0.15 ± 0.03	0.21 ± 0.09	0.01	0.33
22:0 behenic acid	0.27 ± 0.10	0.35 ± 0.14	0.01	0.32 ± 0.12	0.36 ± 0.10	0.29	0.40
24:0 lignoceric acid	0.19 ± 0.15	0.25 ± 0.18	0.22	0.14 ± 0.19	0.33 ± 0.13	0.005	0.11
Total SFAs	32.49 ± 2.32	32.12 ± 2.49	0.53	33.07 ± 2.31	32.19 ± 2.41	0.25	0.59
<b>MUFAs (%)</b>							
16:1n-7 palmitoleic acid	1.56 ± 0.59	1.82 ± 0.59	0.04	1.77 ± 0.38	1.88 ± 0.60	0.42	0.43
18:1n-9 oleic acid	23.61 ± 2.73	19.80 ± 2.58	<0.0001	24.62 ± 3.48	18.89 ± 2.46	<0.0001	0.08
18:1n-7 <i>cis</i> -vaccenic acid	1.91 ± 0.49	1.70 ± 0.40	0.03	2.08 ± 0.49	1.99 ± 0.43	0.52	0.45
20:1n-9 gondoic acid	0.20 ± 0.09	0.17 ± 0.05	0.04	0.23 ± 0.06	0.18 ± 0.04	0.005	0.39
24:1n-9 nervonic acid	0.30 ± 0.19	0.23 ± 0.22	0.14	0.20 ± 0.21	0.13 ± 0.09	0.20	0.97
Total MUFAs	27.67 ± 3.23	23.75 ± 2.99	<0.0001	28.95 ± 3.86	23.08 ± 2.65	<0.0001	0.12
<b>n-3 PUFAs (%)</b>							
18:3n-3 $\alpha$ -linolenic acid	0.37 ± 0.13	0.47 ± 0.17	0.005	0.37 ± 0.10	0.54 ± 0.14	0.0003	0.27
20:5n-3 EPA	0.24 ± 0.12	0.34 ± 0.15	0.02	0.34 ± 0.21	0.35 ± 0.15	0.76	0.16
22:5n-3 DPA	0.37 ± 0.13	0.46 ± 0.12	0.01	0.49 ± 0.22	0.55 ± 0.15	0.35	0.61
22:6n-3 DHA	1.95 ± 1.16	1.66 ± 0.52	0.22	1.87 ± 0.66	1.67 ± 0.44	0.37	0.79
Total long chain n-3 PUFAs <sup>5</sup>	2.56 ± 1.23	2.46 ± 0.64	0.69	2.71 ± 0.79	2.57 ± 0.56	0.61	0.93
Total n-3 PUFAs	3.09 ± 1.25	3.05 ± 0.65	0.88	3.18 ± 0.77	3.20 ± 0.57	0.94	0.88

Fatty acid <sup>2</sup>	Controls (n=29)			Cases (n=15)			P <sup>4</sup>
	Acute dengue episode	Post-convalescence	P <sup>3</sup>	Acute dengue episode	Post-convalescence	P <sup>3</sup>	
<b>n-6 PUFAs (%)</b>							
18:2n-6 linoleic acid	27.33 ± 4.01	29.68 ± 4.18	0.0004	25.65 ± 4.00	28.85 ± 4.42	0.02	0.56
18:3n-6 $\gamma$ -linolenic acid	0.10 ± 0.06	0.26 ± 0.23	0.0006	0.12 ± 0.09	0.32 ± 0.30	0.005	0.65
20:2n-6 EDA	0.21 ± 0.13	0.22 ± 0.12	0.78	0.20 ± 0.07	0.25 ± 0.09	0.18	0.44
20:3n-6 dihomo- $\gamma$ -linolenic acid	1.24 ± 0.38	1.80 ± 0.41	<0.0001	1.24 ± 0.34	1.78 ± 0.48	<0.0001	0.90
20:4n-6 arachidonic acid	6.11 ± 1.32	6.77 ± 1.47	0.04	6.04 ± 1.34	6.99 ± 1.06	0.01	0.53
22:4n-6 adrenic acid	0.35 ± 0.23	1.15 ± 1.18	0.0007	0.56 ± 0.71	1.84 ± 1.24	0.0005	0.23
Total long chain n-6 PUFAs <sup>6</sup>	7.92 ± 1.42	9.93 ± 2.29	0.0002	8.03 ± 1.61	10.86 ± 2.15	<0.0001	0.22
Total n-6 PUFAs	35.35 ± 4.65	39.88 ± 4.48	<0.0001	33.8 ± 4.83	40.03 ± 3.72	0.0001	0.32
18:2n-7 <sub>ct</sub> CLA (%)	0.07 ± 0.07	0.07 ± 0.07	0.68	0.05 ± 0.03	0.14 ± 0.25	0.14	0.18
<b>trans-FA (%)</b>							
16:1n-7 <i>trans</i>	0.29 ± 0.36	0.20 ± 0.06	0.21	0.19 ± 0.11	0.22 ± 0.09	0.36	0.12
18:1 <i>trans</i>	0.59 ± 0.70	0.48 ± 0.19	0.40	0.41 ± 0.18	0.62 ± 0.70	0.26	0.16
18:2 <i>trans</i>	0.46 ± 0.44	0.44 ± 0.12	0.87	0.34 ± 0.13	0.52 ± 0.30	0.05	0.13
Total <i>trans</i> -FA	1.34 ± 1.20	1.13 ± 0.28	0.34	0.94 ± 0.33	1.36 ± 1.05	0.15	0.09
<b>Enzyme activity indices</b>							
Stearoyl-coA-desaturase 18:1n-9/18:0	3.05 ± 0.47	2.47 ± 0.48	<0.0001	3.06 ± 0.54	2.26 ± 0.40	<0.0001	0.25
Elongase 18:1n-7/16:1n-7	1.57 ± 1.25	1.01 ± 0.38	0.01	1.21 ± 0.30	1.13 ± 0.32	0.37	0.04
$\Delta$ 6-desaturase 18:3n-6/18:2n-6	0.004 ± 0.002	0.009 ± 0.009	0.003	0.005 ± 0.003	0.012 ± 0.012	0.01	0.59
$\Delta$ 5-desaturase 20:4n-6/20:3n-6	5.27 ± 2.39	3.90 ± 1.05	0.003	5.08 ± 1.24	4.16 ± 1.06	0.0002	0.36

**Footnotes to Supplemental Table 5**

- <sup>1</sup> Mean  $\pm$  SD.
- <sup>2</sup> SFA, saturated fatty acid; MUFA, monounsaturated fatty acid; PUFA, polyunsaturated fatty acid; EPA, eicosapentaenoic acid; DPA, docosapentaenoic acid; DHA, docosahexaenoic acid; EDA, eicosadienoic acid; CLA, conjugated linoleic acid.
- <sup>3</sup> Wald test for the mean change in FA percentage weight concentrations from the acute episode to post-convalescence, from a repeated measurements linear regression model with an independent covariance matrix to account for the intra-subject correlation of measurements.
- <sup>4</sup> Wald test for case-control differences in mean change in FA percentage weight concentrations from the acute episode to post-convalescence.
- <sup>5</sup> Sum of 20:5n-3 EPA, 22:5n-3 DPA, and 22:6n-3 DHA.
- <sup>6</sup> Sum of 20:2n-6 EDA, 20:3n-6 dihomo- $\gamma$ -linolenic acid, 20:4n-6 arachidonic acid, and 22:4n-6 adrenic acid.

**Supplemental Table 6.** Distribution of serum fatty acids (FA) % according to dengue virus (DENV) serotype<sup>1</sup>

Fatty acid <sup>2</sup>	DENV Serotype				<i>P</i> <sup>3</sup>
	1 n = 20	2 n = 13	3 n = 29	4 n = 15	
SFAs (%)					
14:0 myristic acid	0.29±0.10	0.32±0.23	0.32±0.17	0.30±0.17	0.92
15:0 pentadecanoic acid	0.16±0.06	0.16±0.06	0.16±0.05	0.15±0.06	0.84
16:0 palmitic acid	22.70±1.82	23.44±1.64	23.26±2.18	23.16±1.20	0.52
17:0 margaric acid	0.35±0.07	0.36±0.05	0.36±0.07	0.34±0.05	0.64
18:0 stearic acid	7.68±0.63	8.02±0.83	8.02±1.26	8.15±1.12	0.39
20:0 arachidic acid	0.15±0.05	0.17±0.03	0.17±0.08	0.15±0.05	0.44
22:0 behenic acid	0.31±0.14	0.40±0.11	0.40±0.12	0.29±0.10	0.001
24:0 lignoceric acid	0.25±0.17	0.39±0.09	0.37±0.14	0.20±0.17	0.001
Total SFAs	31.87±2.07	33.26±2.15	33.04±2.65	32.73±1.49	0.25
MUFAs (%)					
16:1n-7 palmitoleic acid	1.63±0.59	1.77±0.43	1.82±0.53	1.83±0.83	0.24
18:1n-9 oleic acid	22.56±3.64	22.05±2.48	23.33±2.79	23.18±2.36	0.40
18:1n-7 cis-vaccenic acid	1.91±0.44	2.59±0.41	2.41±0.53	2.00±0.58	0.0002
20:1n-9 gondoic acid	0.21±0.15	0.17±0.08	0.20±0.05	0.20±0.07	0.58
24:1n-9 nervonic acid	0.38±0.17	0.60±0.15	0.48±0.30	0.32±0.24	0.008
Total MUFAs	26.76±4.07	27.42±2.89	28.34±3.10	27.68±2.67	0.31
n-3 PUFAs (%)					
18:3n-3 α-linolenic acid	0.35±0.10	0.19±0.10	0.22±0.14	0.31±0.09	0.0002
20:5n-3 EPA	0.31±0.11	0.33±0.10	0.28±0.19	0.30±0.09	0.08
22:5n-3 DPA	0.47±0.14	0.42±0.10	0.41±0.18	0.40±0.13	0.15
22:6n-3 DHA	1.73±0.51	1.48±0.52	1.45±0.64	2.00±0.89	0.02
Total long chain n-3 PUFAs <sup>4</sup>	2.51±0.60	2.24±0.60	2.15±0.78	2.70±0.91	0.04
Total n-3 PUFAs	3.01±0.66	2.42±0.63	2.42±0.89	3.14±0.94	0.006

n-6 PUFAs (%)					
18:2n-6 linoleic acid	28.34±4.87	25.95±2.22	26.82±3.76	26.25±2.35	0.06
18:3n-6 $\gamma$ -linolenic acid	0.16±0.10	0.33±0.10	0.24±0.09	0.15±0.12	<0.0001
20:2n-6 EDA	0.17±0.07	0.25±0.06	0.24±0.05	0.20±0.12	0.001
20:3n-6 dihomo- $\gamma$ -linolenic acid	1.21±0.41	1.44±0.54	1.27±0.49	1.38±0.48	0.43
20:4n-6 arachidonic acid	6.86±1.43	6.93±1.57	6.06±1.25	6.91±1.29	0.08
22:4n-6 adrenic acid	0.51±0.63	0.96±0.92	0.52±0.36	0.42±0.20	0.009
Total long chain n-6 PUFAs <sup>5</sup>	8.75±1.87	9.58±2.44	8.08±1.48	8.91±1.47	0.11
Total n-6 PUFAs	37.25±5.48	35.86±3.23	35.14±4.23	35.31±2.86	0.14
18:2n-7ct CLA (%)					
	0.07±0.11	0.01±0.02	0.05±0.12	0.07±0.07	0.003
trans-FA (%)					
16:1n-7 trans	0.19±0.07	0.24±0.05	0.24±0.11	0.28±0.34	0.06
18:1 trans	0.46±0.26	0.49±0.15	0.49±0.18	0.43±0.17	0.56
18:2 trans	0.38±0.17	0.30±0.15	0.28±0.13	0.36±0.08	0.32
Total trans-FA	1.04±0.43	1.03±0.30	1.00±0.29	1.06±0.31	0.93
Enzyme activity indices					
Stearoyl-coA-desaturase 18:1n-9/18:0	2.95±0.50	2.78±0.46	2.97±0.54	2.88±0.37	0.48
Elongase 18:1n-7/16:1n-7	1.41±1.07	1.53±0.36	1.50±0.90	1.51±1.30	0.03
$\Delta$ 6-desaturase 18:3n-6/18:2n-6	0.006±0.005	0.013±0.004	0.009±0.004	0.006±0.005	0.0001
$\Delta$ 5-desaturase 20:4n-6/20:3n-6	6.06±2.53	5.19±1.62	5.40±2.66	5.48±2.80	0.40

### Footnotes to Supplemental Table 6

<sup>1</sup> Mean  $\pm$  SD.

<sup>2</sup> SFA, saturated fatty acid; MUFA, monounsaturated fatty acid; PUFA, polyunsaturated fatty acid; EPA, eicosapentaenoic acid; DPA, docosapentaenoic acid; DHA, docosahexaenoic acid; EDA, eicosadienoic acid; CLA, conjugated linoleic acid.

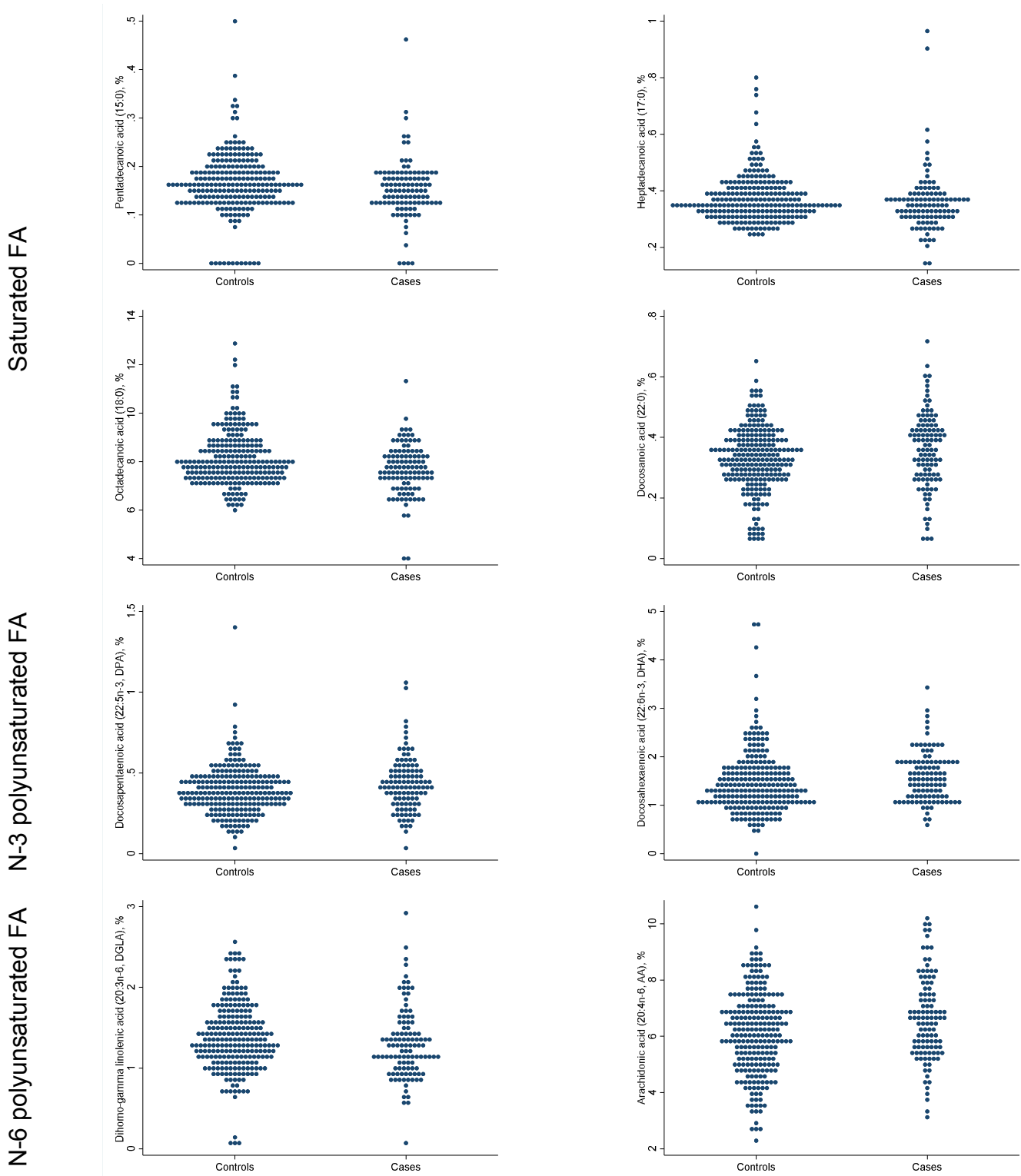
<sup>3</sup> Wilcoxon rank-sum test.

<sup>4</sup> Sum of 20:5n-3 EPA, 22:5n-3 DPA, and 22:6n-3 DHA.

<sup>5</sup> Sum of 20:2n-6 EDA, 20:3n-6 dihomo- $\gamma$ -linolenic acid, 20:4n-6 arachidonic acid, and 22:4n-6 adrenic acid.



Supplemental Figure 1. Distribution of serum fatty acids (FA) % in dengue fever controls and dengue hemorrhagic fever/dengue shock syndrome cases



Supplemental Figure 1 (continued).

Enzyme activity indices

