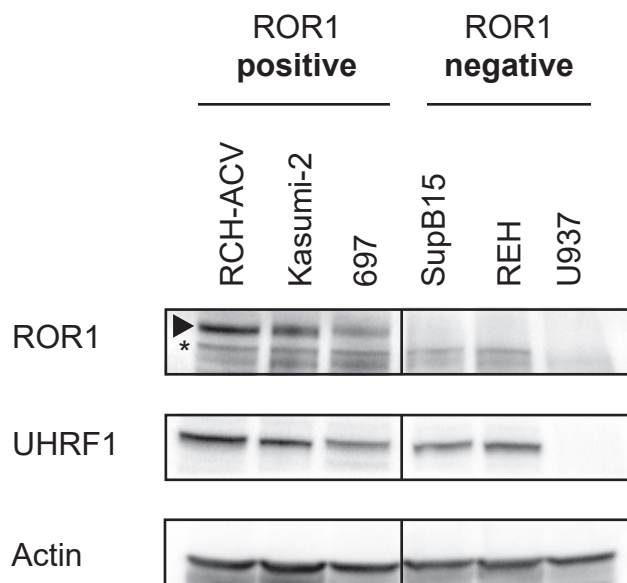


## Supplementary Figure 5



**Supplementary Figure 5. Detection of ROR1 protein is also associated with a non-specific band.** Full-length ROR1 (arrowhead) is detectable in ROR1-expressing cell lines (ROR1-positive). However, a lower band (asterisk) is also observed, but this is consistent in non-ROR1-expressing (ROR1-negative) cell lines, suggesting that this lower band is non-specific.