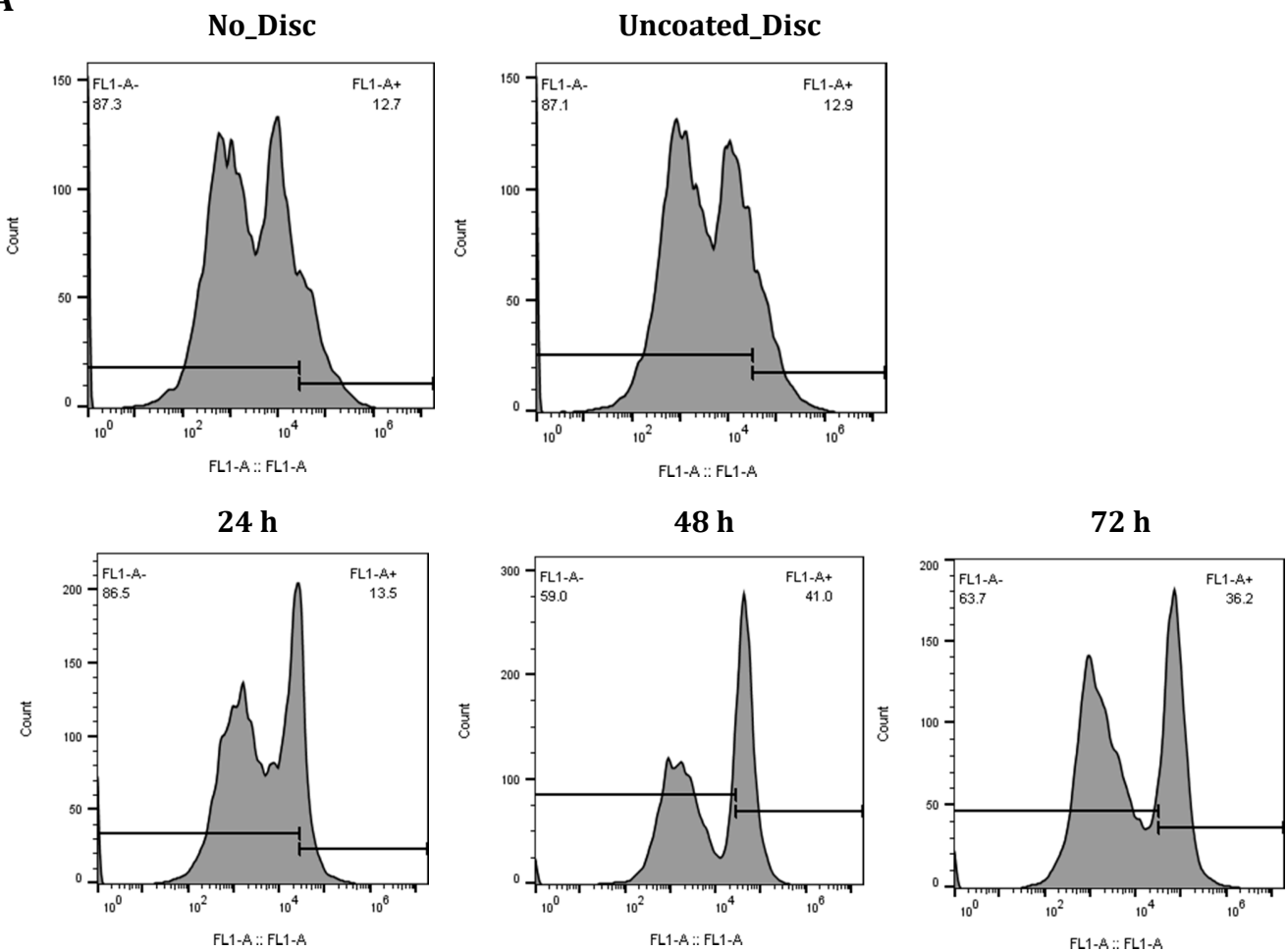


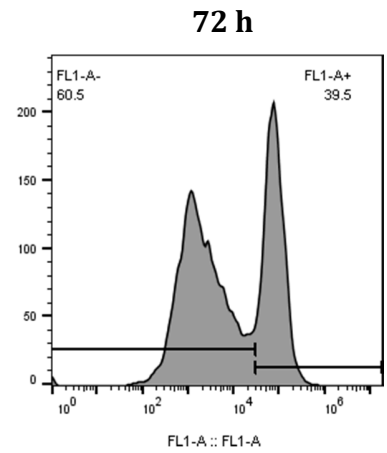
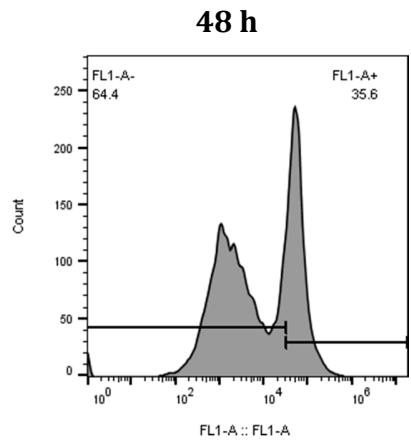
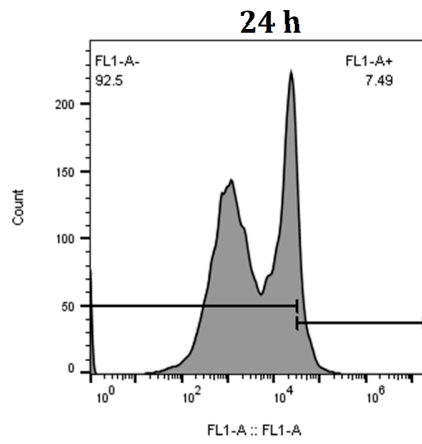
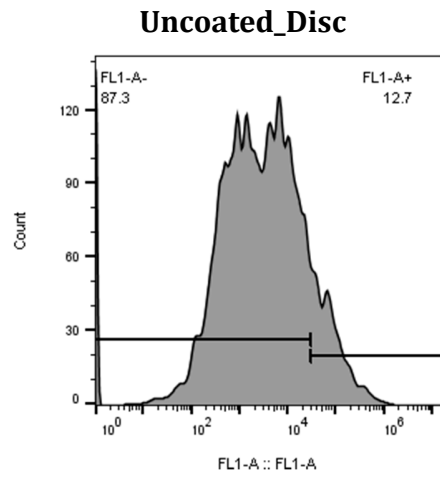
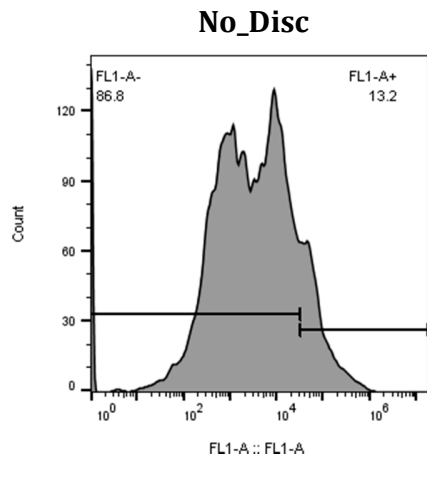
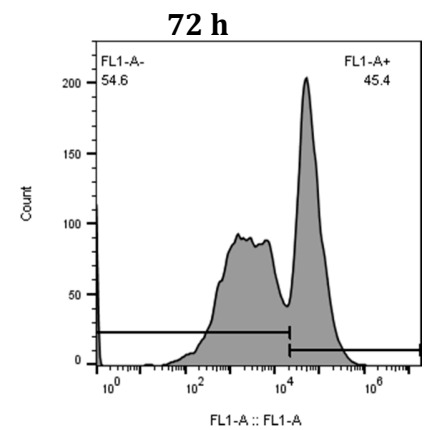
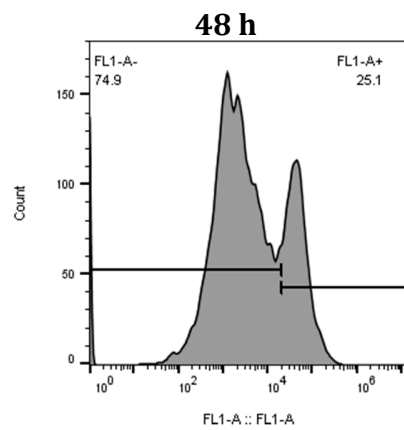
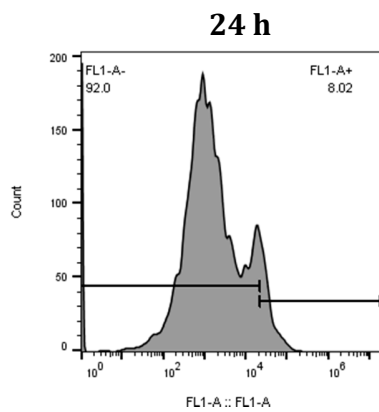
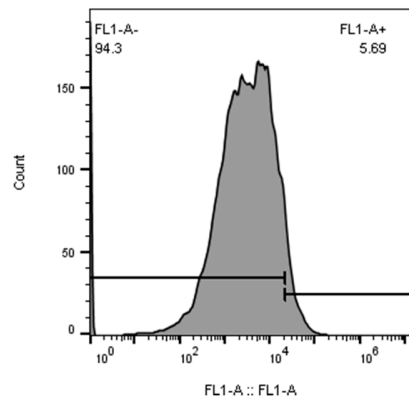
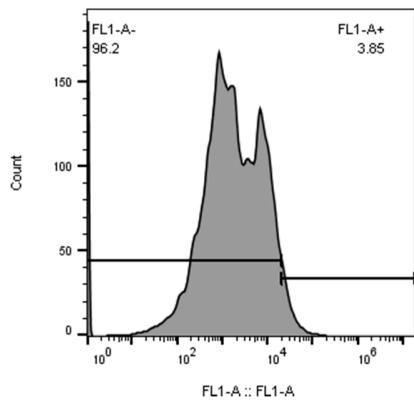
Silver oxide coatings with high silver-ion elution rates and characterization of bactericidal activity

Sarah S. Goderecci ^{1†}, Eric Kaiser^{2†}, Michael Yanakas², Zachary Norris², Jeffrey Scaturro², Robert Oszust², Clarence D. Medina¹, Fallon Waechter¹, Min Heon⁶, Lei Yu¹, Samuel E. Lofland², Renee M. Demarest⁴, Robert R. Krchnavek ³, Gregory A. Caputo ^{1,5*} and Jeffrey D. Hettinger ^{2,5*}

Supplemental Figures and Tables

A



B**No_Disc****Uncoated_Disc****C**

Supplemental Figure 1 - Histograms from flow cytometric analysis used to generate graphs in Figure 7. Panels A, B, and C are the three separate replicates used.

Supplemental Table 1

Table S1			
Elution rate of Ag ions in different media types			
Media Type	Elution Rate (ppm/min) ^a		R ² Value ^a
Water	7.55E-02	± 0.0071	0.998
PBS	3.34E-02	± 0.0058	1.000
LB Broth	4.55E-03	± 0.0011	0.995
DMEM	3.65E-03	± 0.0006	0.996

a – Rates and R² values presented are the average of the rates R² values of each individual replicate of elution experiments (3-6 replicates).