

Dihydrochalcones and Diterpenoids from *Pteris ensiformis* and their Bioactivities

Supplementary Materials

List of Contents

Fig. S1 The IR Spectrum of **1**

Fig. S2 The ^1H NMR Spectrum of **1** in $\text{MeOH-}d_4$ (600 MHz)

Fig. S3 The ^{13}C NMR Spectrum of **1** in $\text{MeOH-}d_4$ (150MHz)

Fig. S4 The gHSQC Spectrum of **1** in $\text{MeOH-}d_4$ (600 MHz)

Fig. S5 The gHMBC Spectrum of **1** in $\text{MeOH-}d_4$ (600 MHz)

Fig. S6 The gCOSY Spectrum of **1** in $\text{MeOH-}d_4$ (600 MHz)

Fig. S7 HRESIMS spectrum of **1**

Fig. S8 The ^1H NMR Spectrum of (+)-**1** in $\text{MeOH-}d_4$ (600 MHz)

Fig. S9 The ^1H NMR Spectrum of (-)-**1** in $\text{MeOH-}d_4$ (600 MHz)

Fig. S10 The CD Spectra of (+)-**1** (blue) and (-)-**1** (black).

Fig. S11 $^1\text{H-}^1\text{H}$ COSY and HMBC correlations of **1**

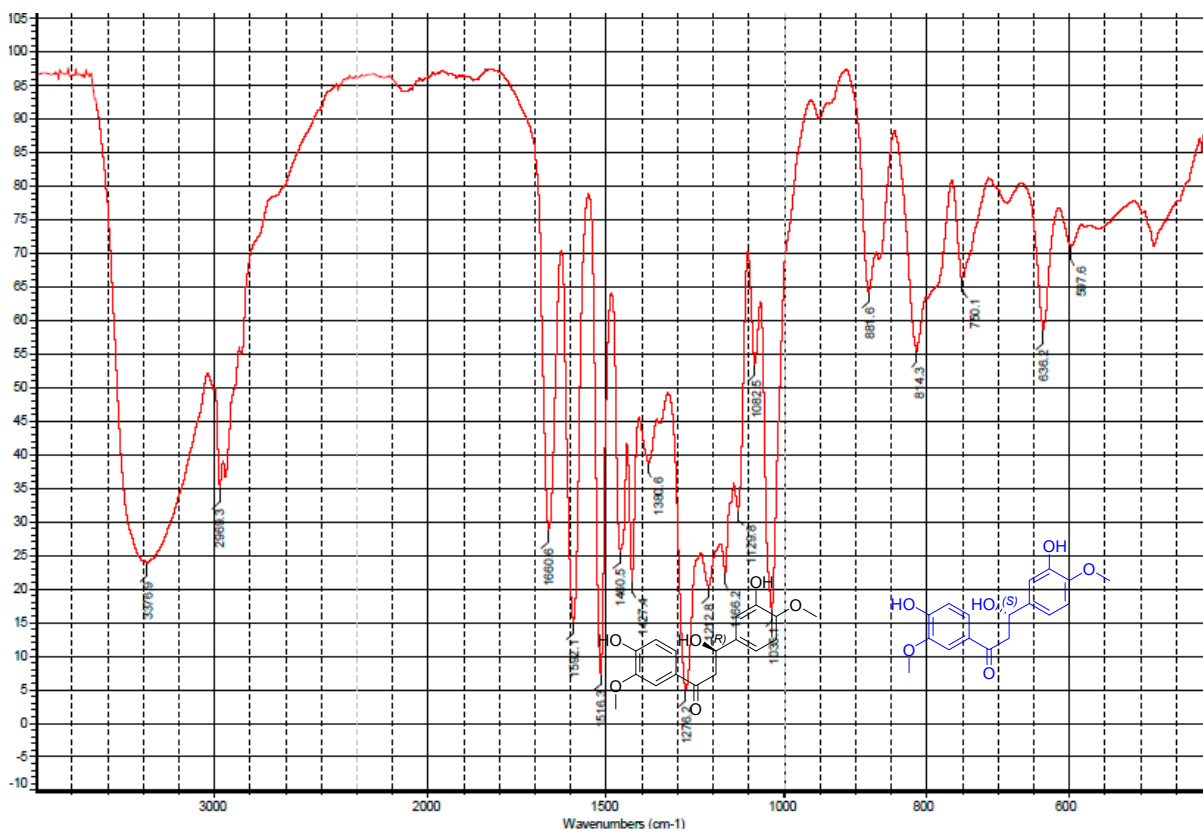


Fig. S1 IR spectrum of compound 1

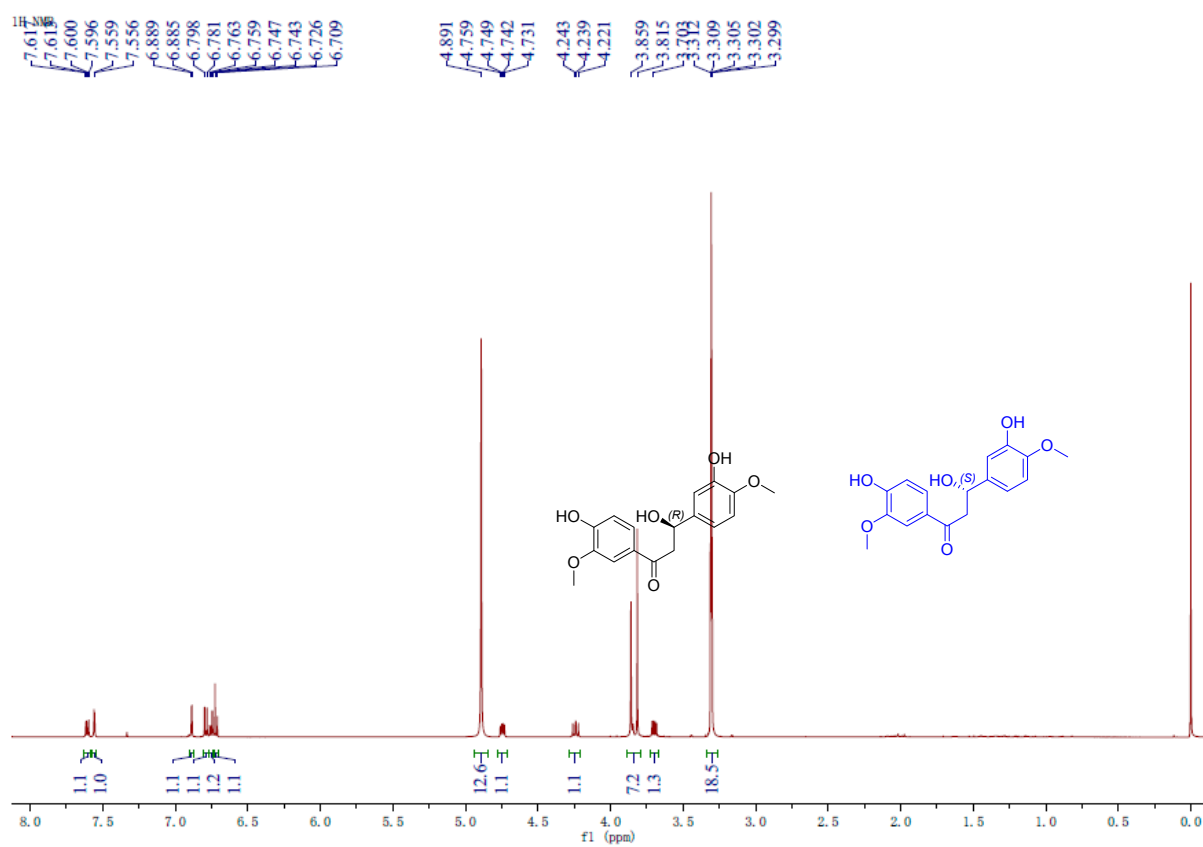


Fig. S2 ¹H-NMR spectrum of compound 1 in MeOH-d₄ (600 MHz)

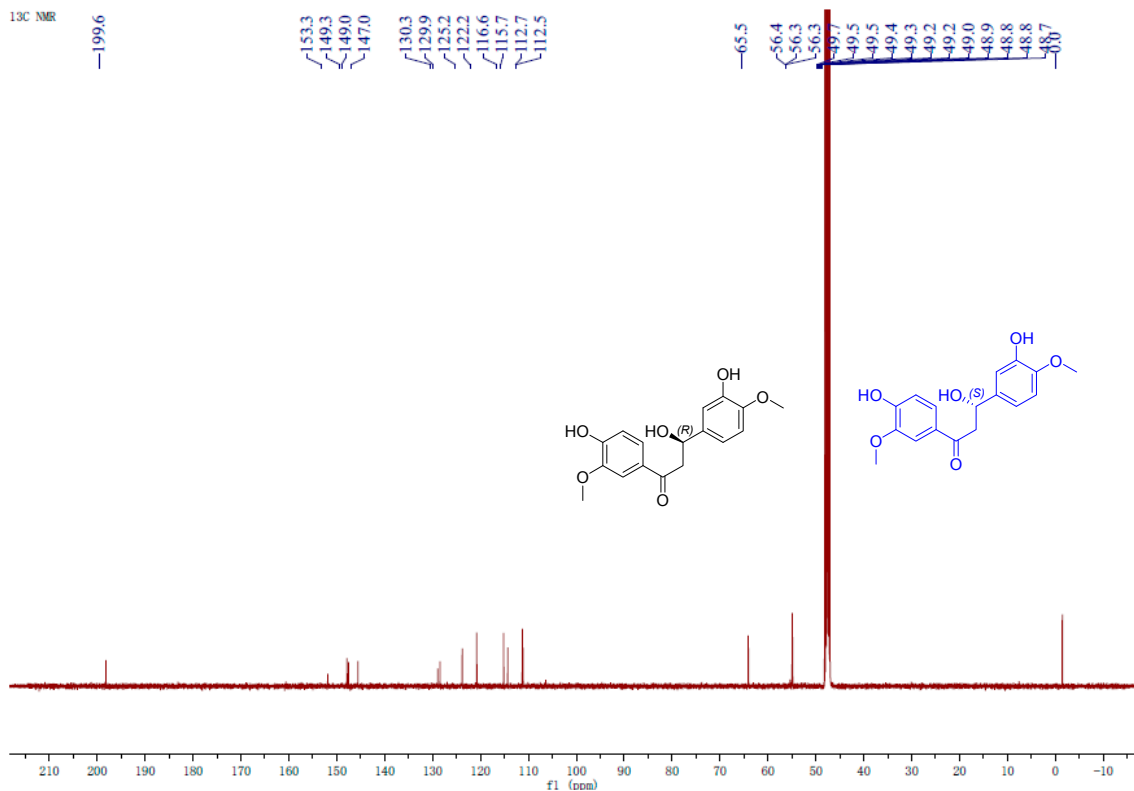


Fig. S3 ¹³C-NMR spectrum of compound **1** in MeOH-*d*₄ (150 MHz)

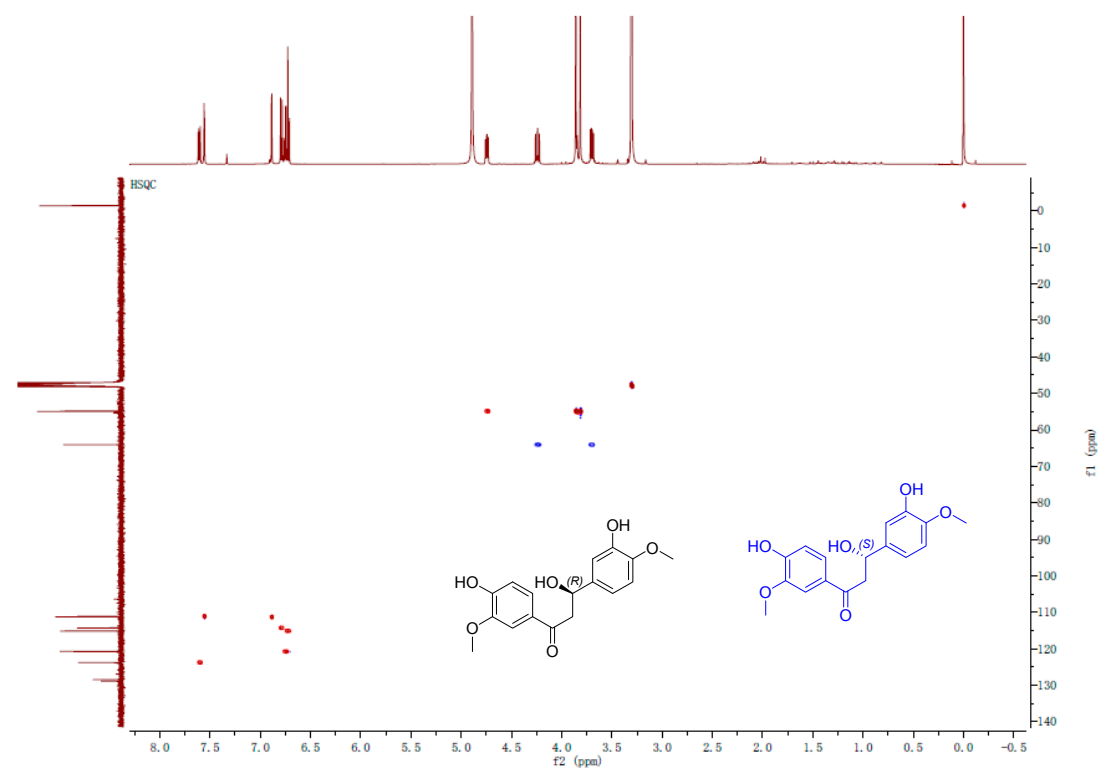


Fig. S4 HSQC spectrum of compound **1** in MeOH-*d*₄ (600 MHz)

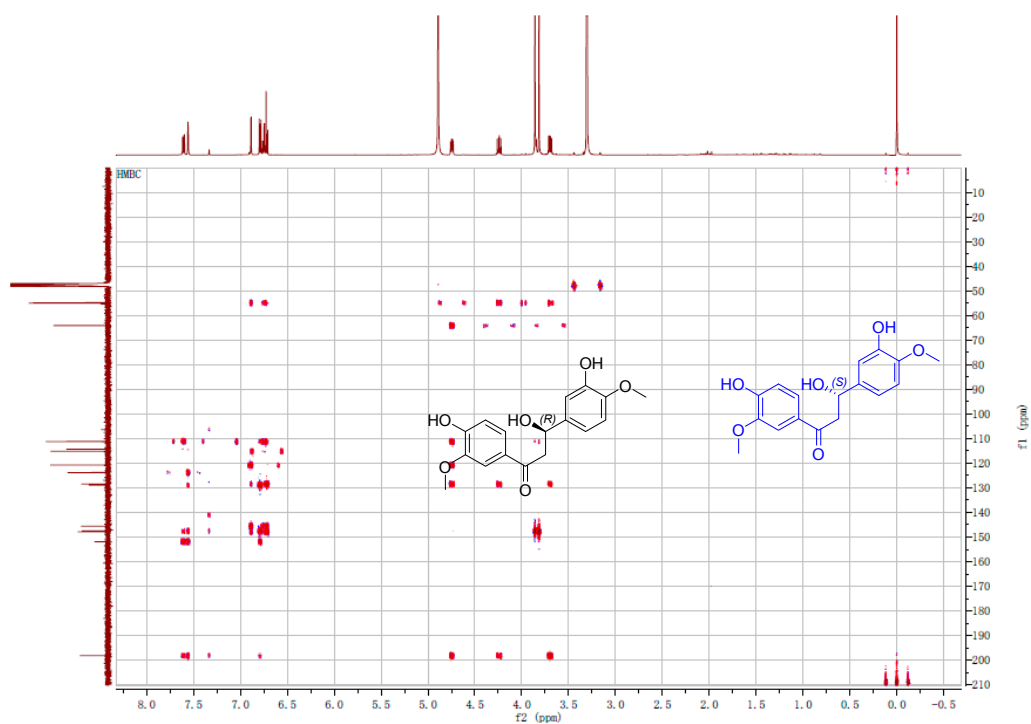


Fig. S5 HMBC spectrum of compound **1** in MeOH-*d*₄ (600 MHz)

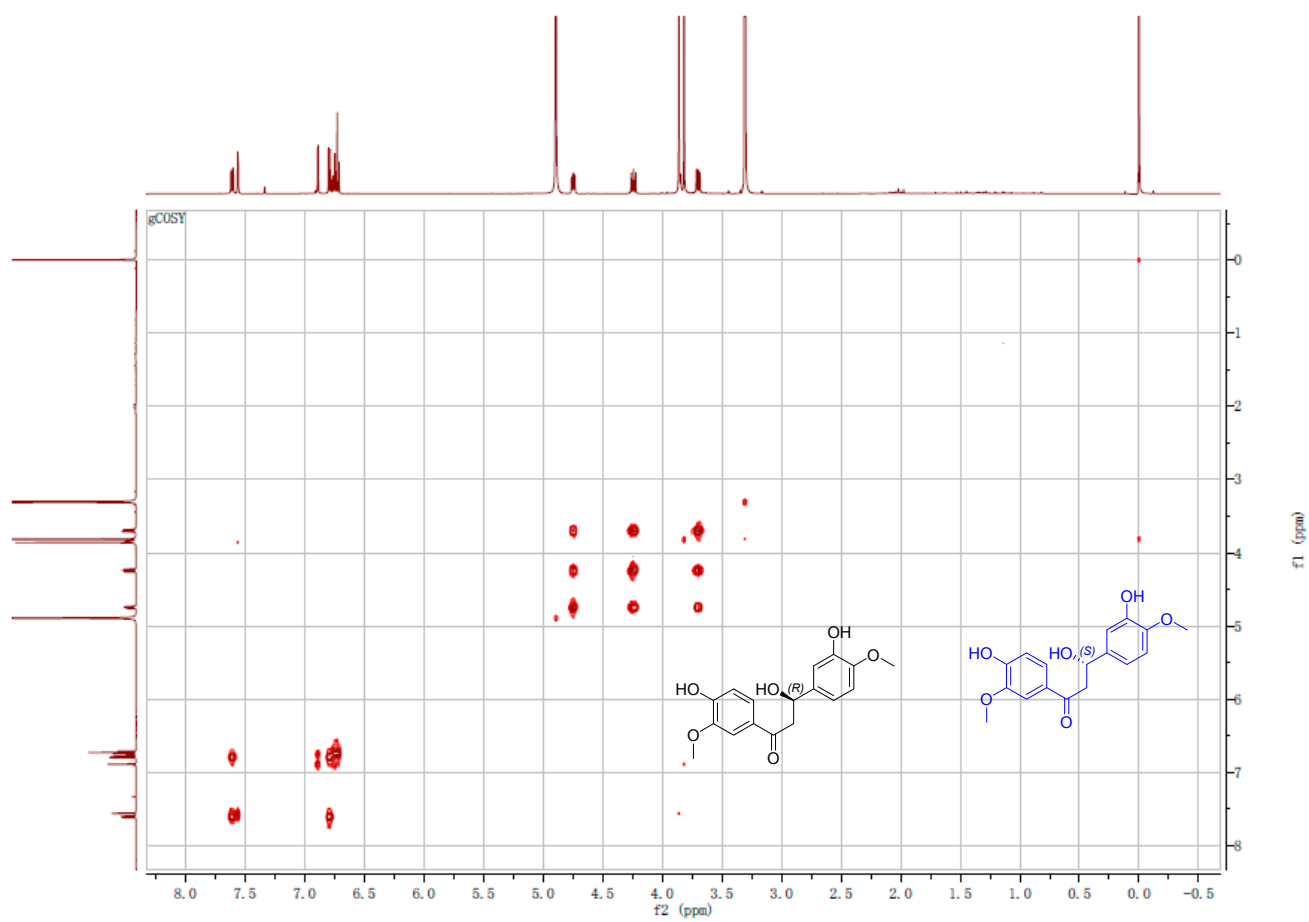


Fig. S6 ¹H-¹H COSY spectrum of compound **1** in MeOH-*d*₄ (600 MHz)

MS Formula Results: + Scan (4.752 min) Sub (2015101201.d)

m/z	Ion	Formula	Abundance
318.1177	(M+H) ⁺	C17H18O6	1124030

Best	Formula (M)	Ion Formula	Score	Cross Sco	Mass	Calc Mass	Calc m/z	Diff (ppm)	Abs Diff (ppm)	Mass Match	Abund Match	Spacing Match	DBE
✓	C17H18O6	C17H19O6	99.99		318.1104	318.1103	319.1176	-0.27	0.27	100	99.97	99.99	9
	C18H14N4O2	C18H15N4O2	99.58		318.1104	318.1117	319.119	3.92	3.92	99.52	99.36	99.58	14

Fig. S7 HRESIMS spectrum of compound 1

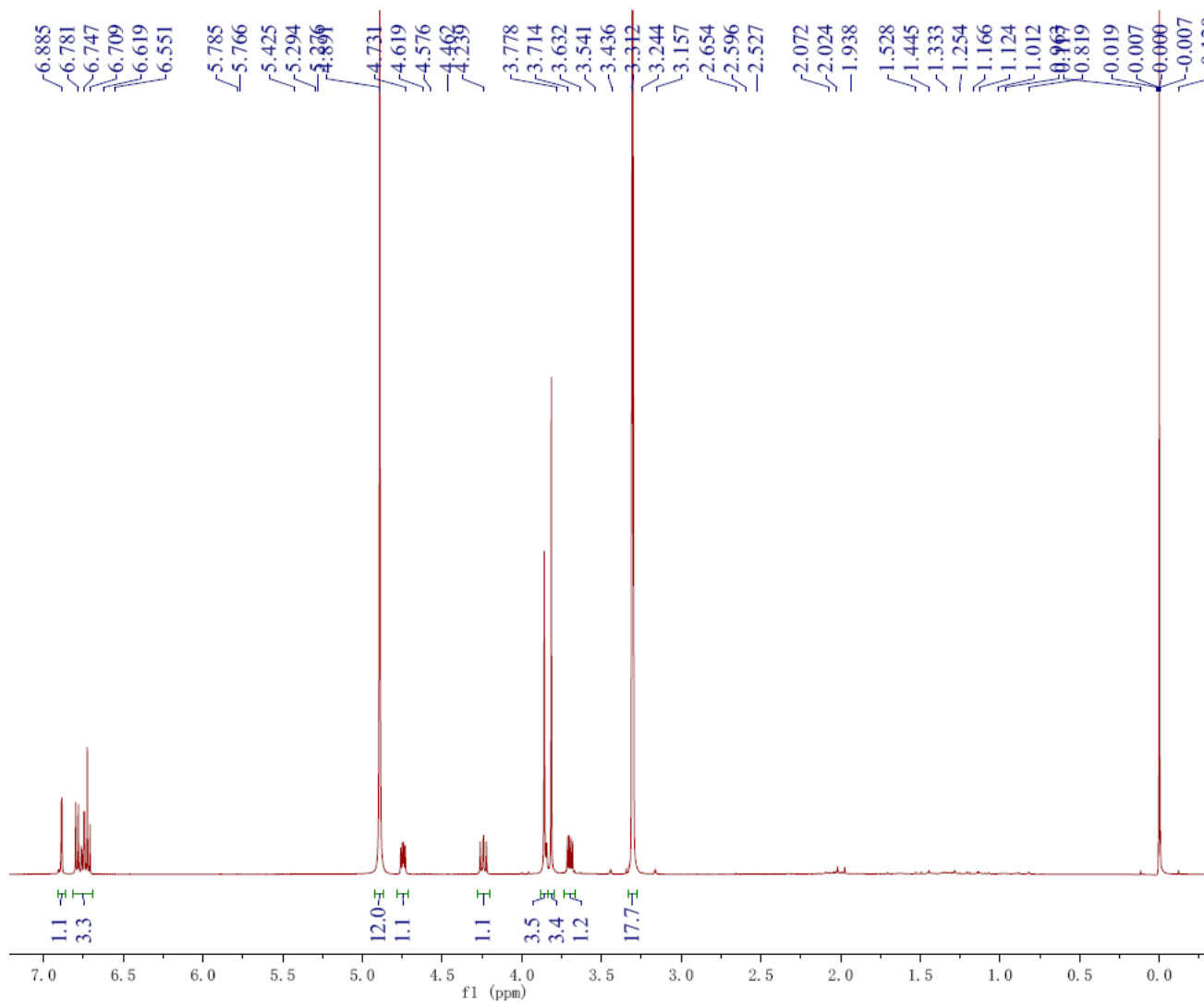
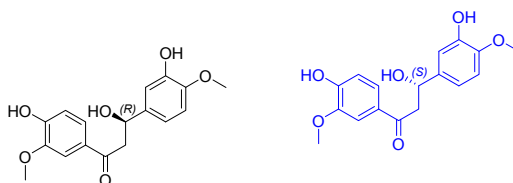


Fig. S8 The 1H NMR Spectrum of (+)-1 in MeOH-d₄ (600 MHz)

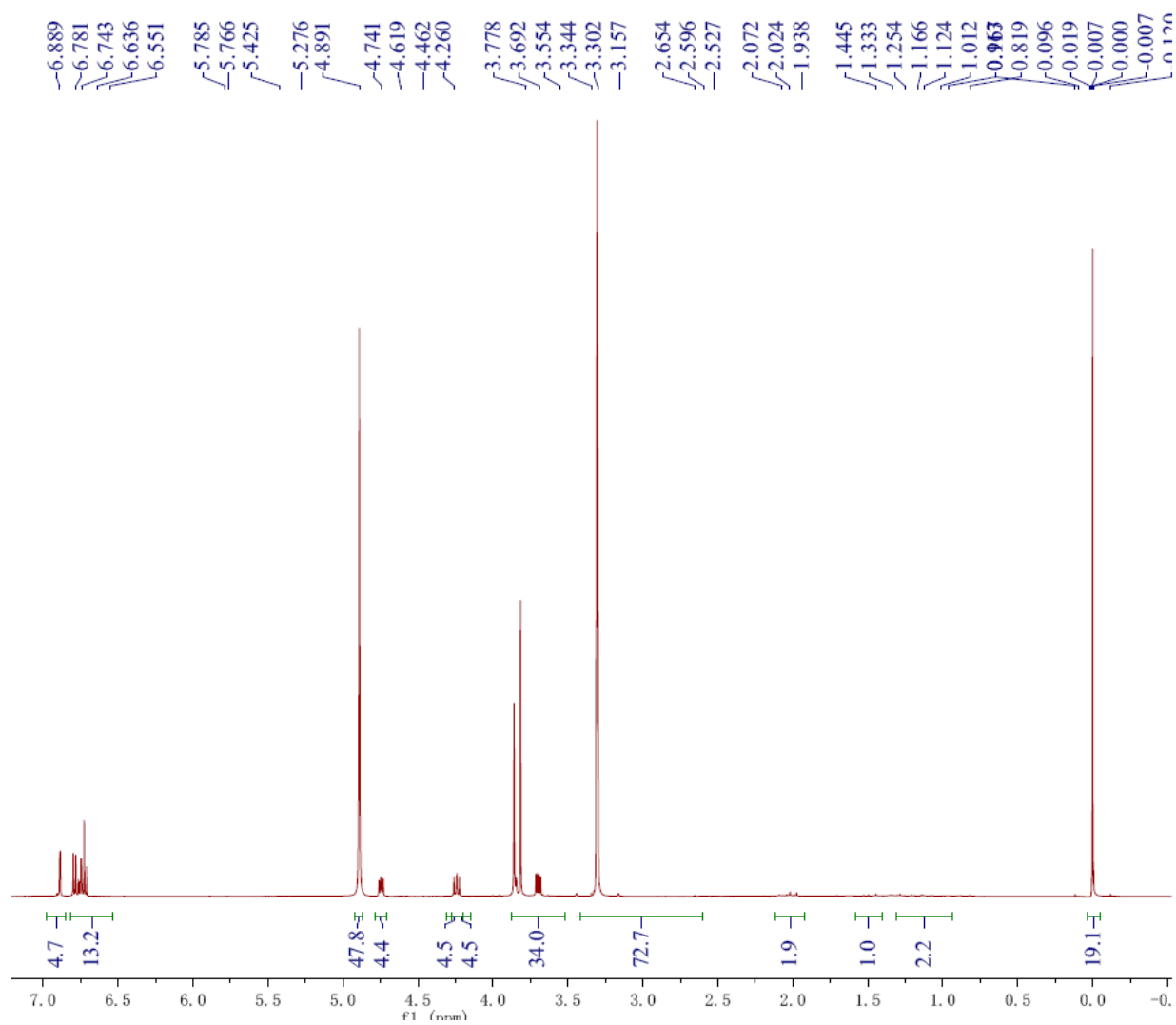


Fig. S9 The ^1H NMR Spectrum of (-)-**1** in $\text{MeOH-}d_4$ (600 MHz)

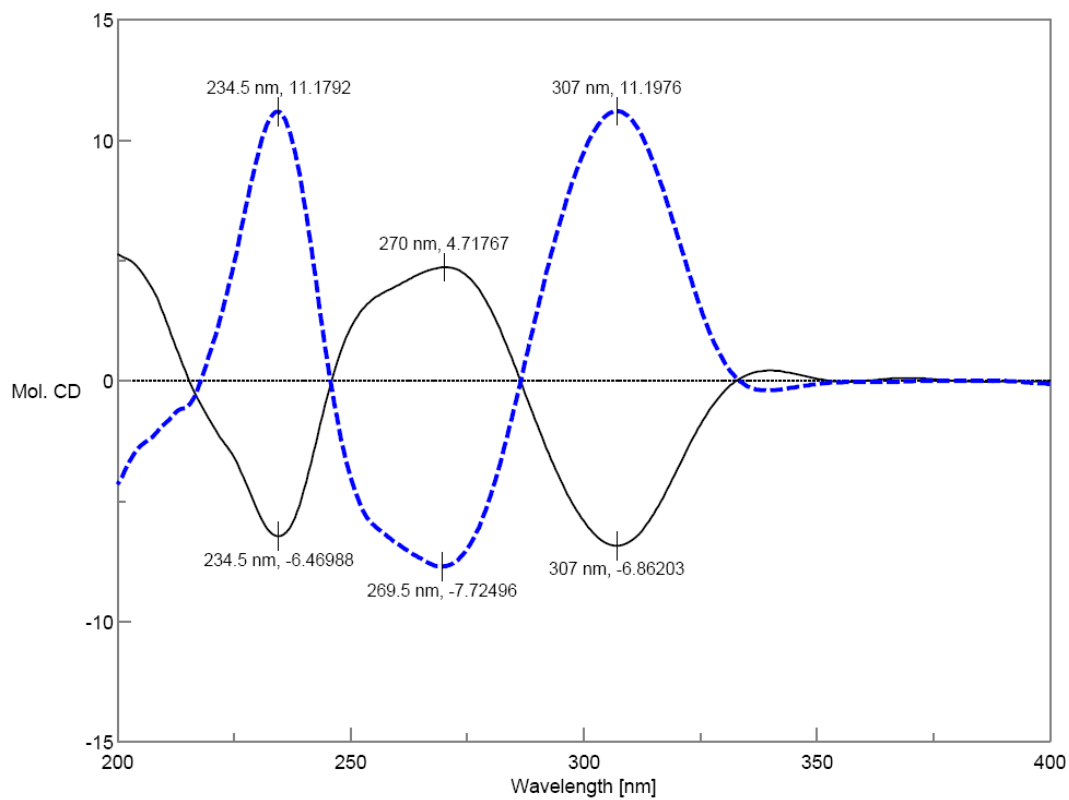


Fig. S10 The CD Spectra of (+)-**1** (blue) and (-)-**1** (black).

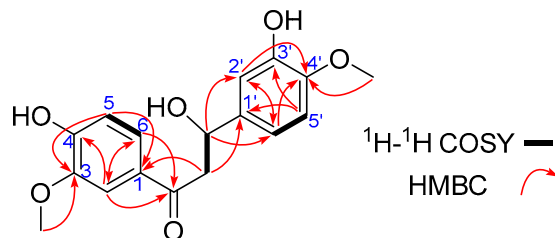


Fig. S11 $^1\text{H}-^1\text{H}$ COSY and HMBC correlations of **1**