

Figure S1.

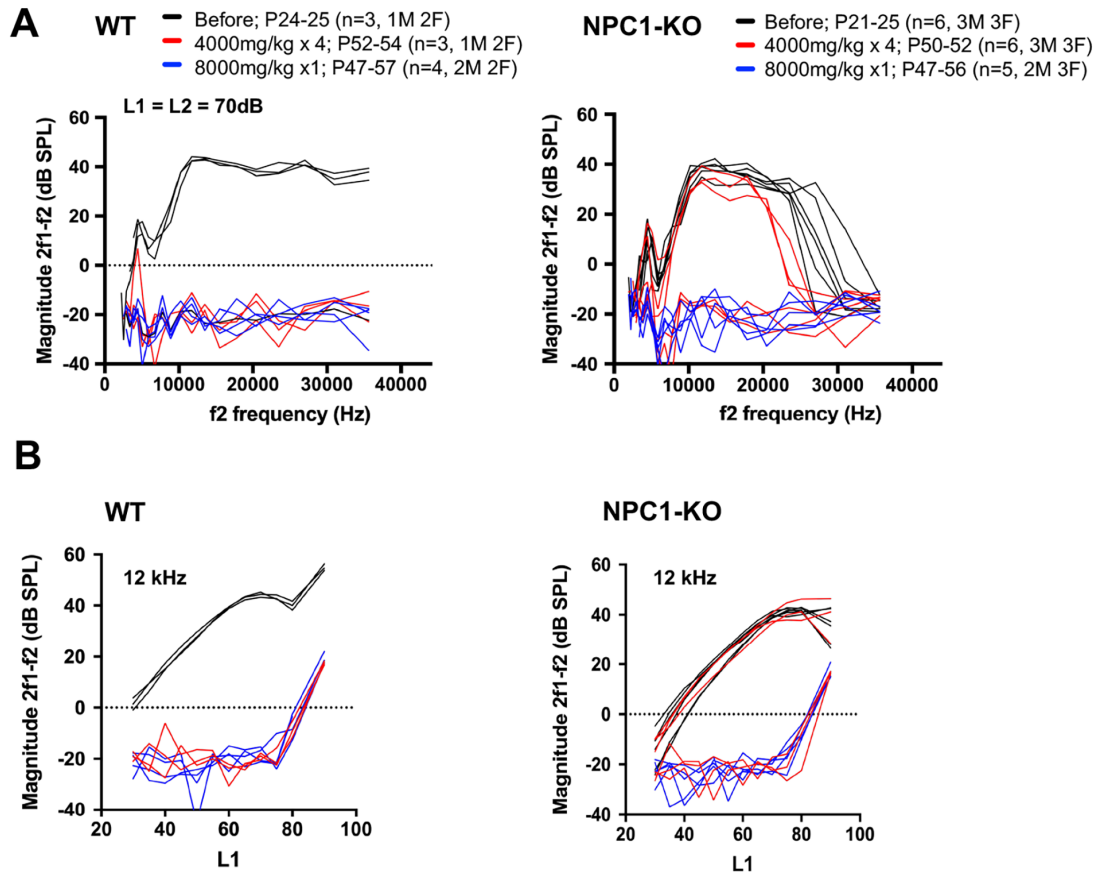


Figure S1. A. DP-grams for 2f1-f2 at high (L1=L2 =70 dB) stimulus levels for the same WT and NPC1-KO mice shown in Figure 4A. Black lines show before and red lines after four weekly injections of 4000 mg/kg HP β CD treatments. Blue lines show responses of mice receiving a single administration of 8000 mg/kg HP β CD. **B.** DPOAE input-output functions of the same mice in **A** and **B**, showing responses for f2=12 kHz (f2/f1=1.2).

Figure S2.

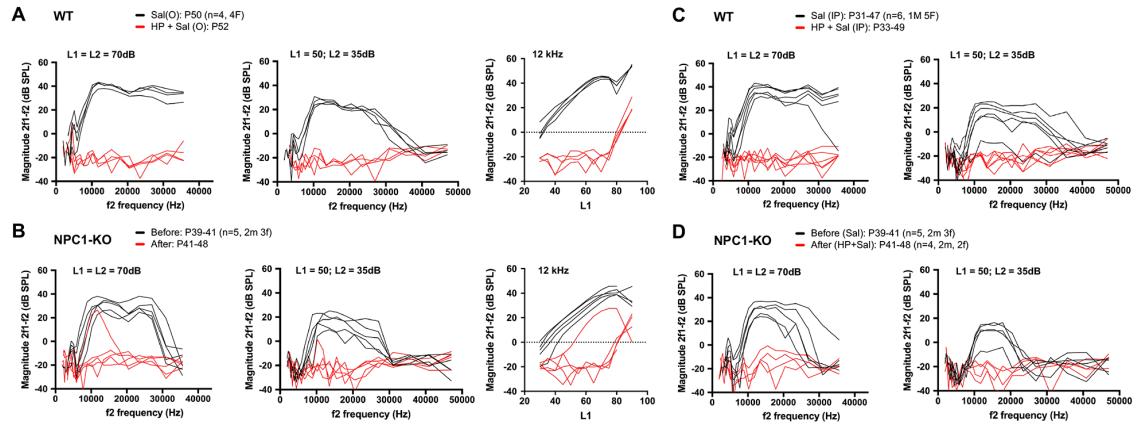


Figure S2. Salicylate treatment of WT and NPC1-KO mice did not mitigate HP β CD-induced hearing impairment. **A-B.** DP-grams and input-output functions of Sal (O) and HP + Sal (O) groups from Figure 5A, C-D are shown in **A**. WT. **B.** NPC1-KOs. **C-D.** DP-grams of Sal (IP) and HP + Sal (IP) groups from Fig. 5B, C-D are shown. **C.** WT. **D.** NPC1-KOs.