

# Analytical Techniques and Pharmacokinetics of *Gastrodia elata* Blume and Its Constituents

Jinyi Wu, Bingchu Wu, Chunlan Tang\* and Jinshun Zhao\*

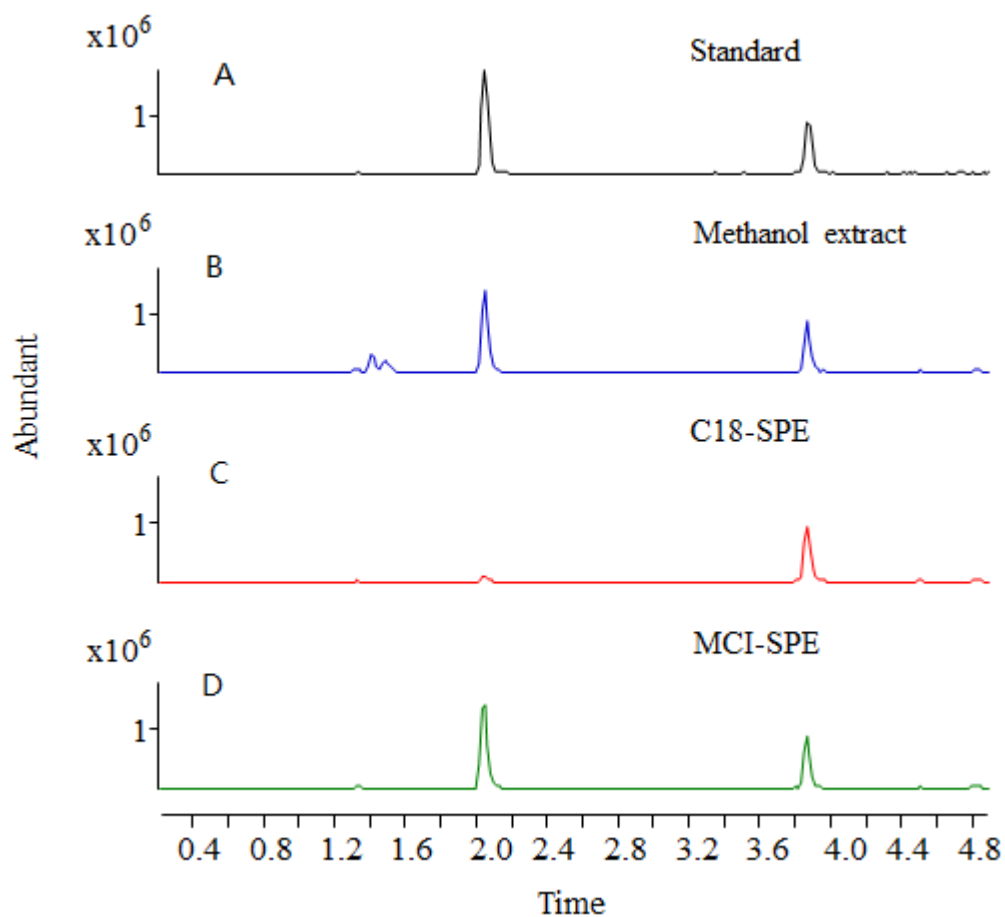


Fig.S1: The total ion chromatograms of gastrodin and parishin in 10% methanol-water (A), gastrodin and parishin in rat plasma extracted with methanol (B), gastrodin and parishin in rat plasma extracted with C18-SPE (C), gastrodin and parishin in rat plasma extracted with MCI-SPE (D) by UPLC-QTOF MS.