

Supplemental Material

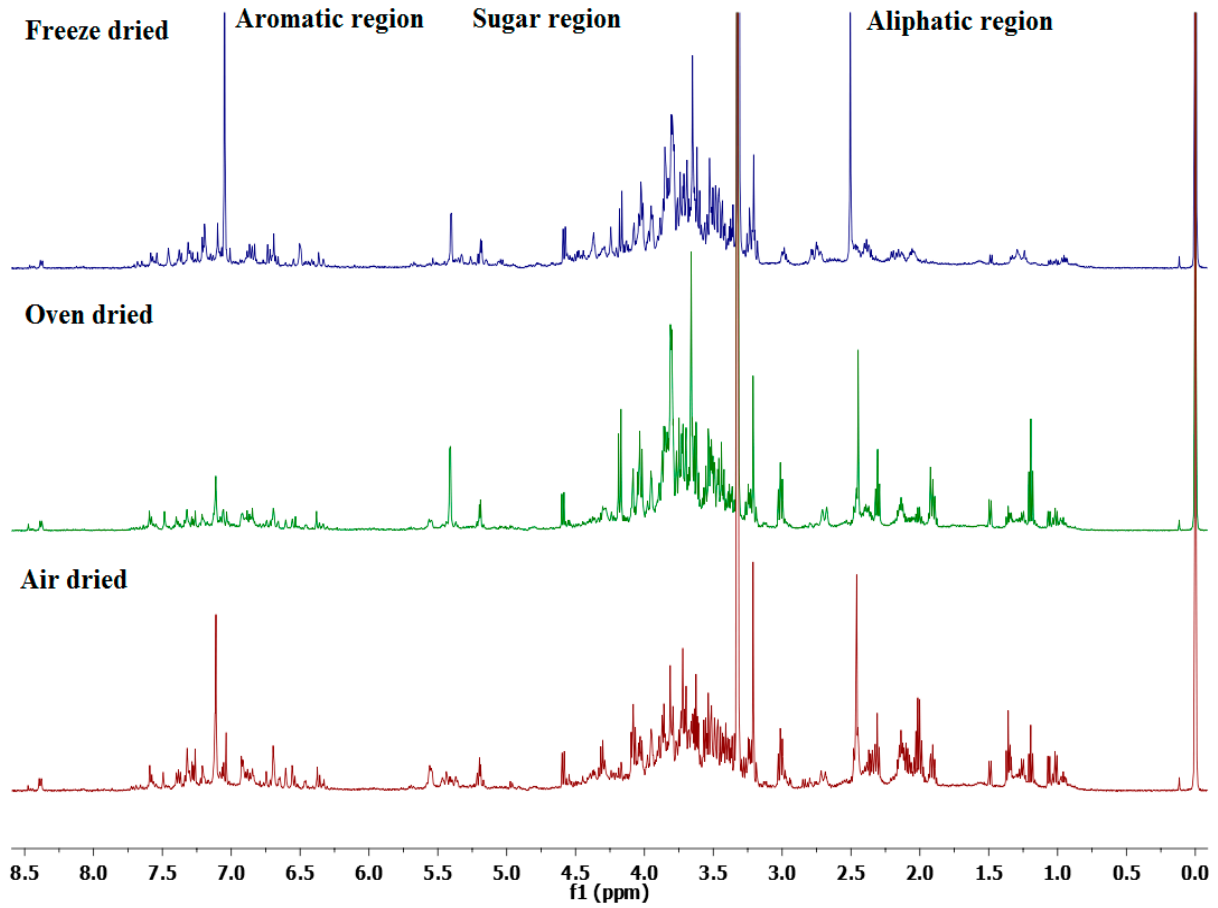


Figure S1. Overlay ¹H NMR spectra of the three dried *P. niruri* extracts

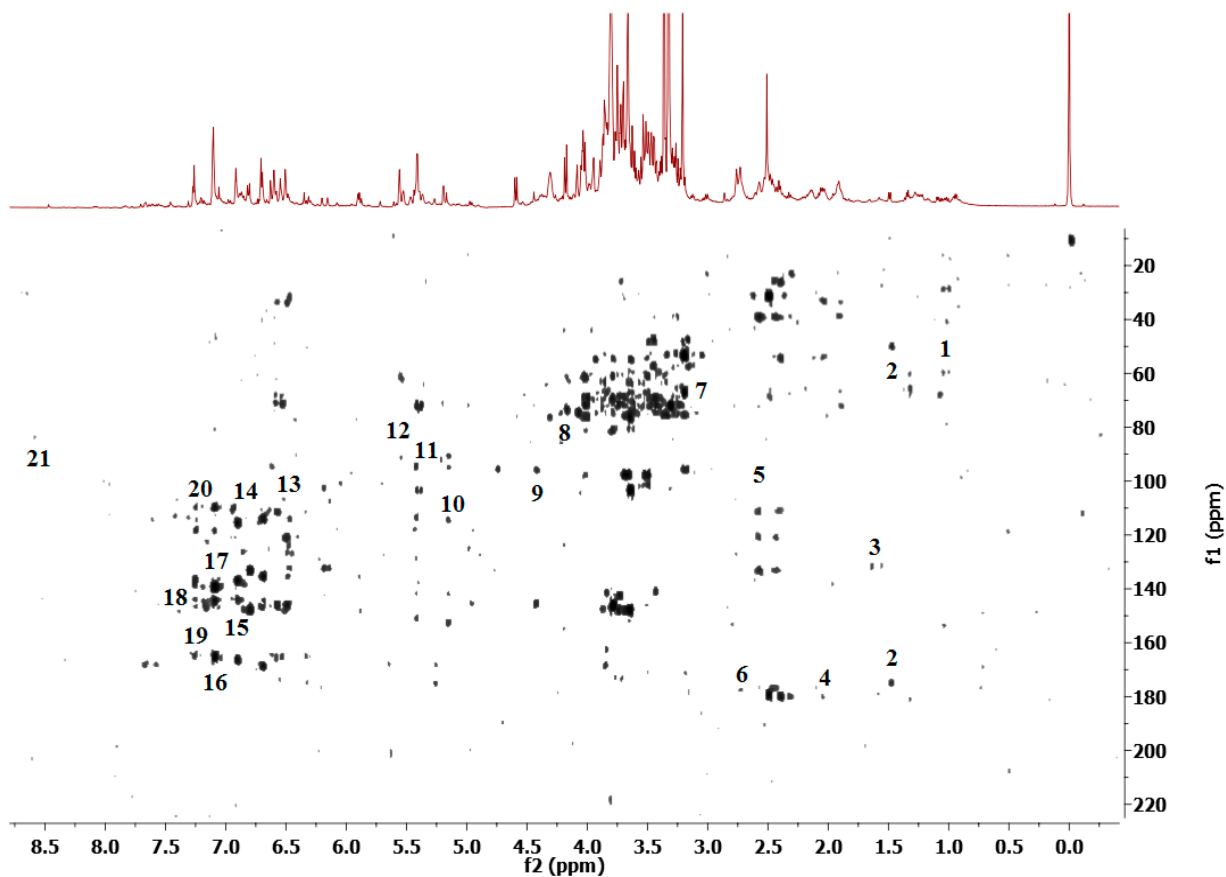
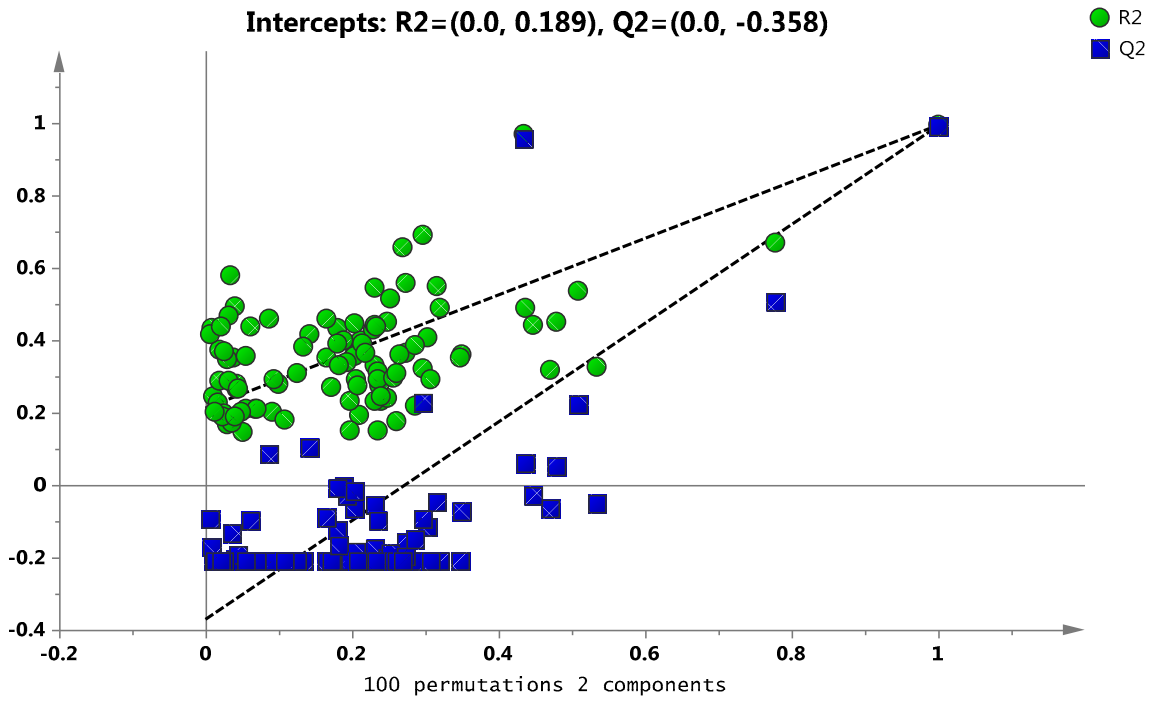


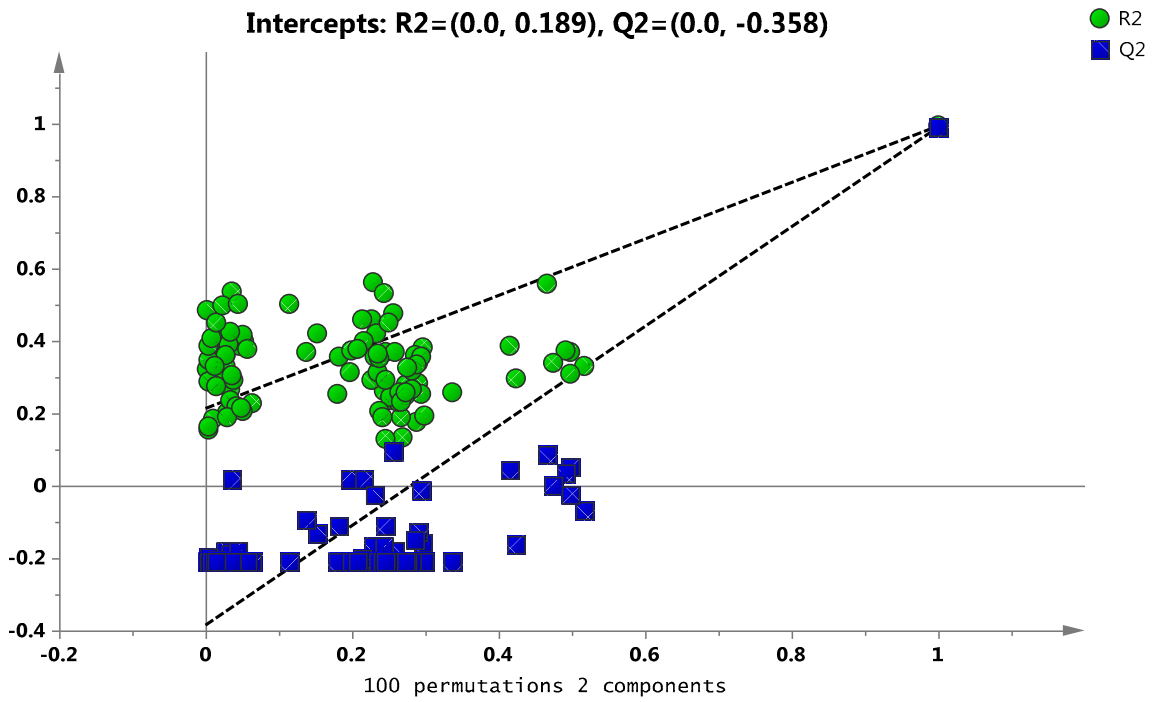
Figure S2. Representative HMBC spectra of *P. niruri* extract

Assignments: 1, Leucine; 2, alanine; 3, valine; 4, acetic acid; 5, catechin; 6, malic acid; 7, choline; 8, fructose; 9, β -glucose; 10, α -glucose; 11, sucrose; 12, hypophyllanthin; 13, rutin; leucine; 14, phyllanthin; 15, epicatechin; 16, caffeic acid; 17, quercetin derivatives; 18, ellagic acid; 19, gallic acid; 20, chlorogenic acid; and 21, formic acid

DPPH



FRAP



Alpha glucosidase

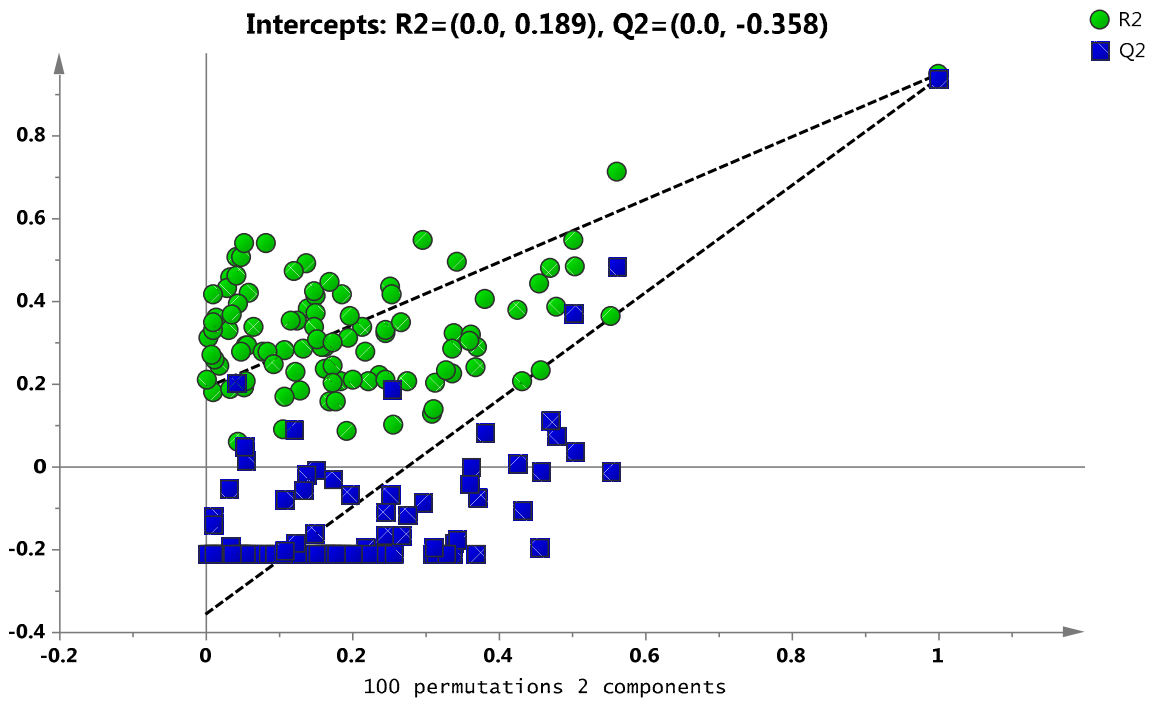
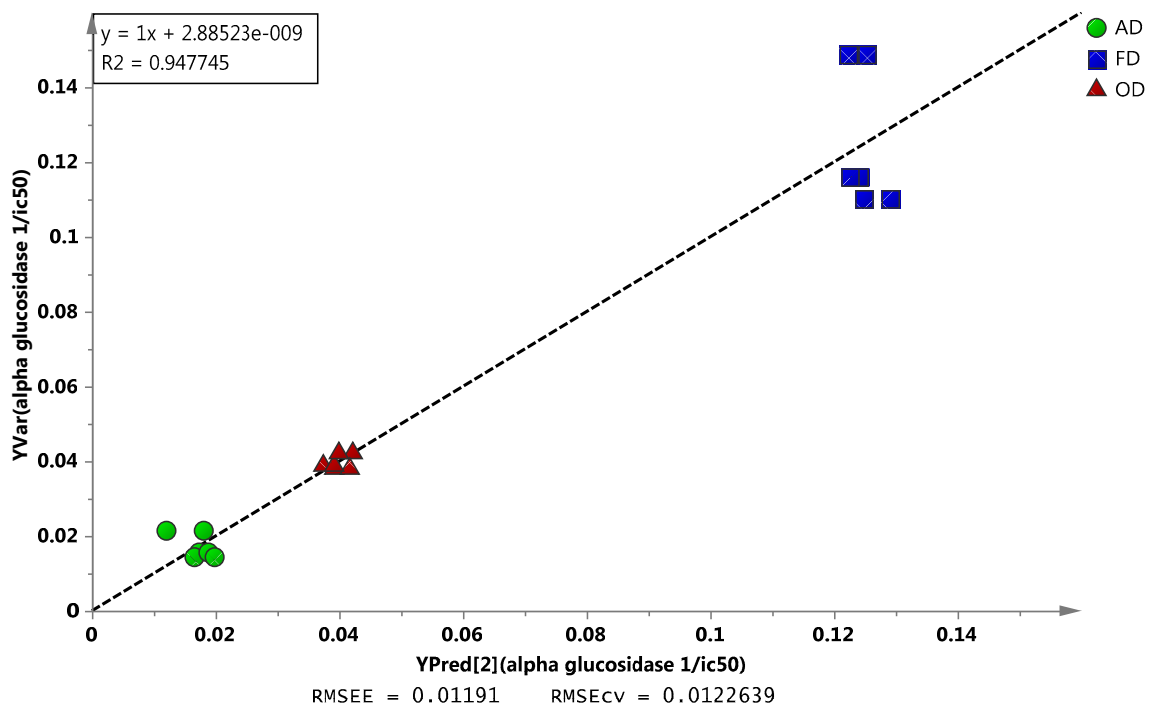
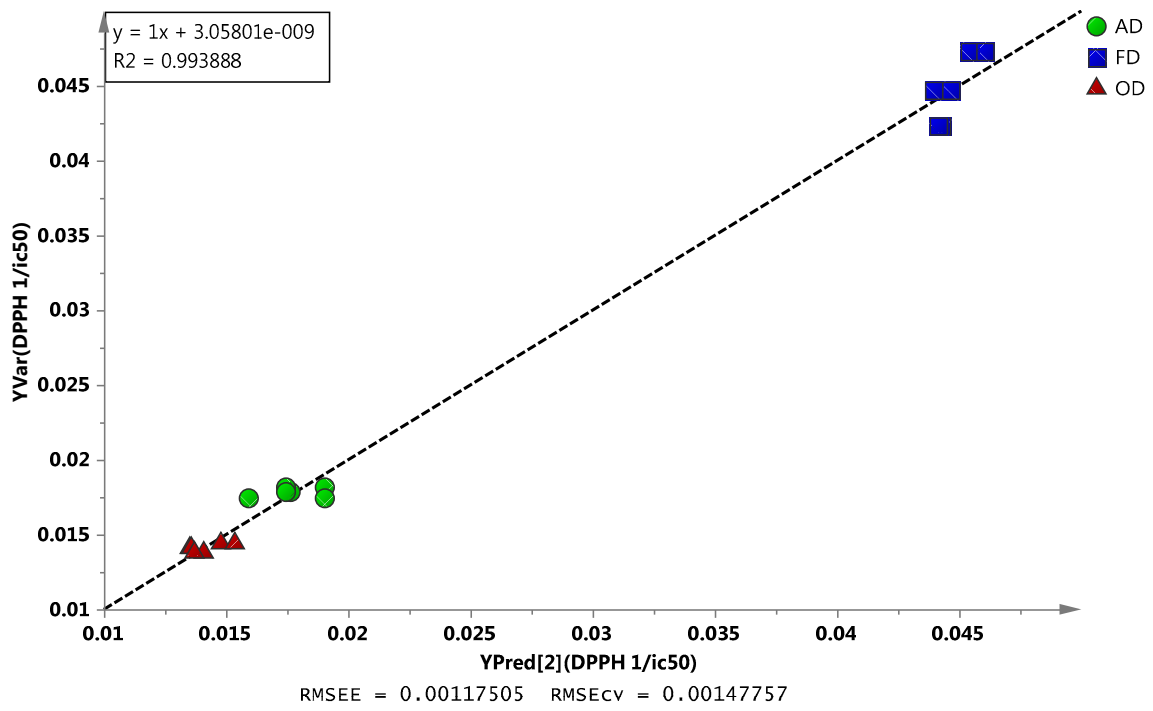
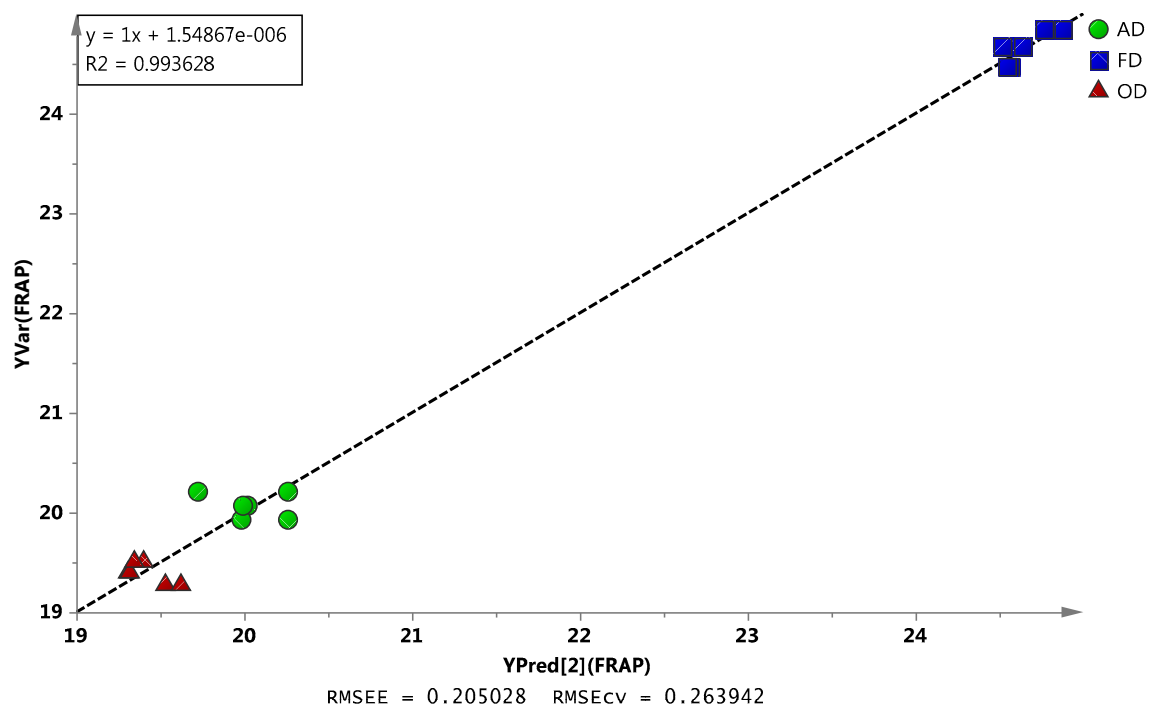


Figure S3. The permutations for validation of partial least square (PLS) model





AD – Air drying; OD – Oven drying; FD – Freeze drying

Figure S4. Observed versus predicted plots of partial least square (PLS) model