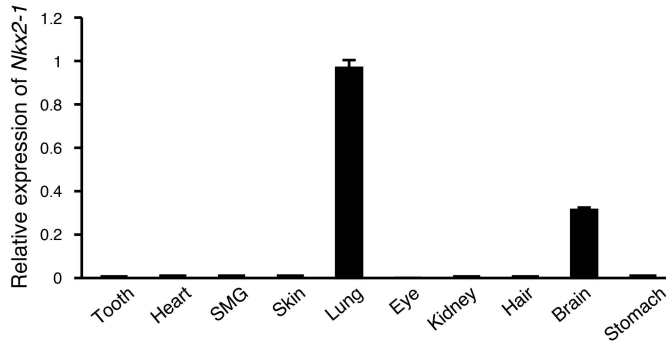
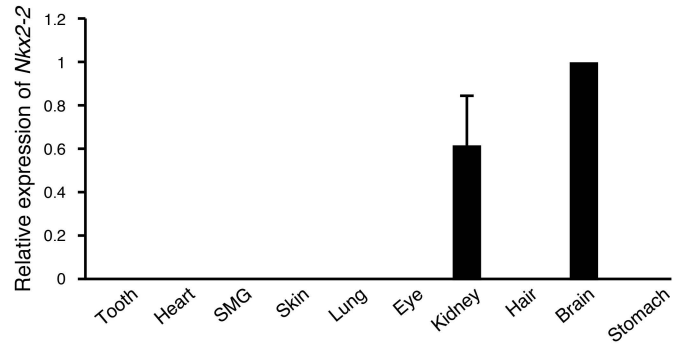


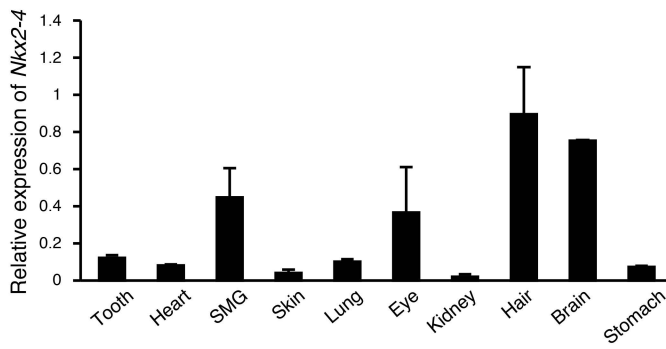
A



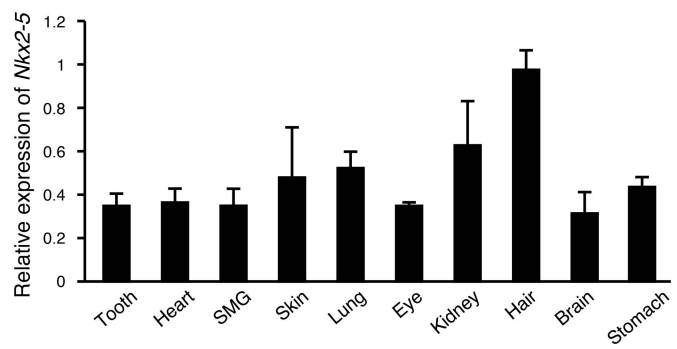
B



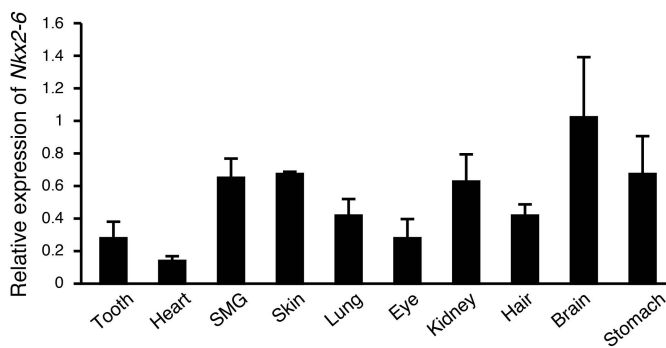
C



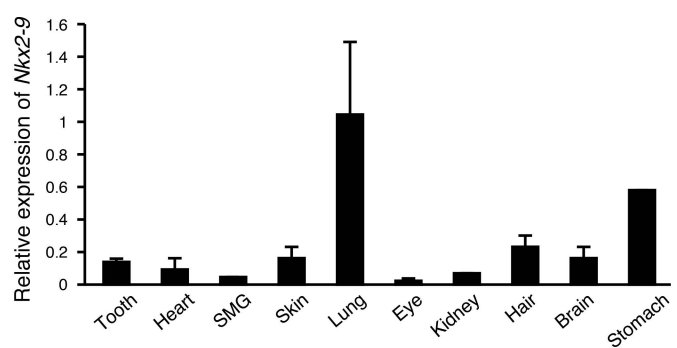
D



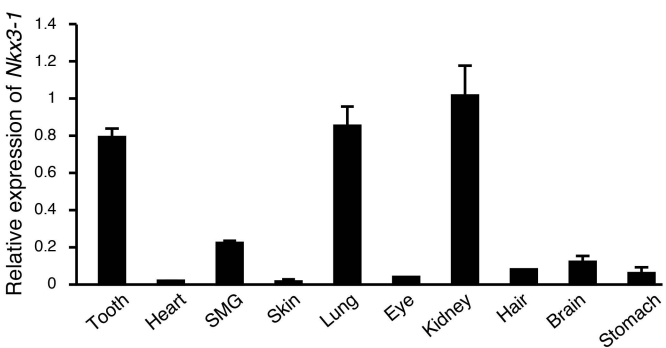
E



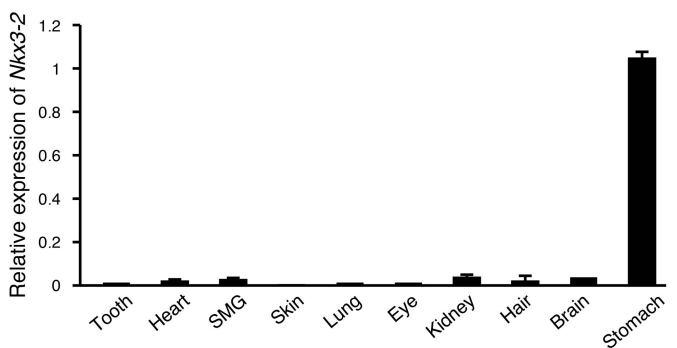
F



G



H



Supplemental Figure legends

Supplemental Figure 1. Expression of NKX-homeodomain factors in different organs. (A) *Nkx2-1*, (B) *Nkx2-2*, (C) *Nkx2-4*, (D) *Nkx2-5*, (E) *Nkx2-6*, (F) *Nkx2-9*, (G) *Nkx3-1*, and (H) *Nkx3-2* expressions were determined in tooth, heart, submandibular gland, skin, lung, eye, kidney, hair, brain, and stomach samples obtained from E14 embryos, with normalization to *Gapdh* mRNA expression. The primers were used as follows: *Nkx2-1*, 5'- cttatggtcggacctggtg -3' and 5'- aaaaagtagaagcgcgtgga -3'; *Nkx2-2*, 5'- ccccatccttccttaaa -3' and 5'- tttgtgttggtcagcgacat -3'; *Nkx2-4*, 5'- cgcttaagcagcagaagta -3' and 5'- ttggcctgctcttcatctt -3'; *Nkx2-5*, 5'- tatggctacaacgcctaccc -3' and 5'- gttcacgaagttgctgttg -3'; *Nkx2-6*, 5'- ctattctcccaggeccaagt -3' and 5'- agatcttgacctgcgtggac -3'; *Nkx2-9*, 5'- tctggtctcctggaactggt -3' and 5'- acctcctgactttggtgtgg -3'; *Nkx3-1*, 5'- ctggcatccatctttctggt -3' and 5'- cttgcttccgactccttgac -3'; and *Nkx3-2*, 5'- tcagaaccgtcgctacaaga -3' and 5'- tctccggcaaatactgtct -3'. Error bars represent the mean \pm S.D.