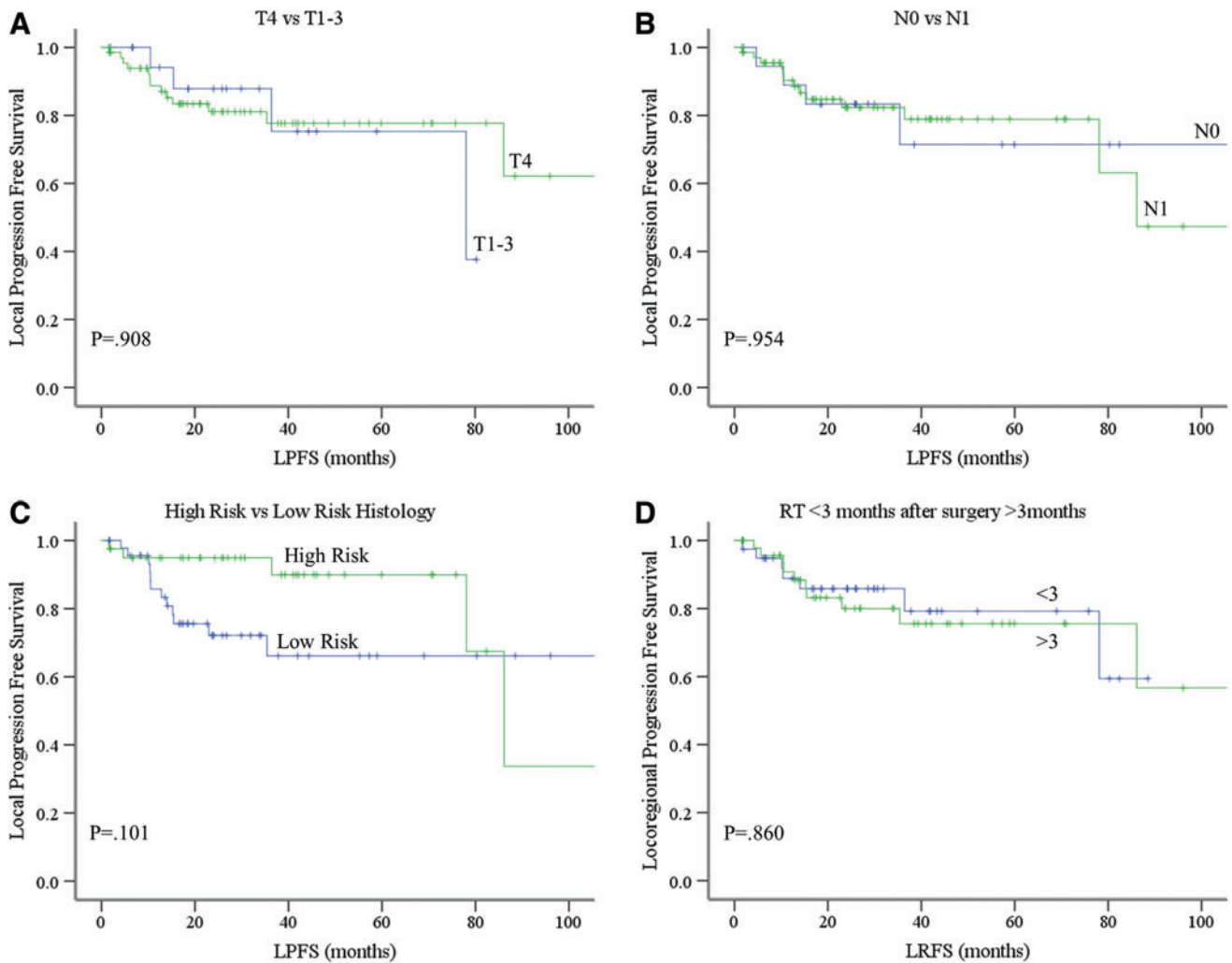


Supplementary Data



SUPPLEMENTARY FIG. S1. Kaplan-Meier estimates of locoregional progression free survival. (A) Kaplan-Meier estimate of locoregional progression free survival based on T1–T3 versus T4 tumor stage status. Blue line represents T1-3 status and green line T4 status ($p=0.908$). (B) Kaplan-Meier estimate of locoregional progression free survival based on N0 node status versus N1 status. Blue line represents N0 status and green line N1 status ($p=0.954$). (C) Kaplan-Meier estimate of locoregional progression free survival based on low risk versus high risk pathology status. Blue line represents low risk and green line high risk status ($p=0.101$). (D) Kaplan-Meier estimate of locoregional progression free survival based on RT ≤ 3 months versus >3 months. Blue line represents ≤ 3 months and green line >3 months ($p=0.795$).