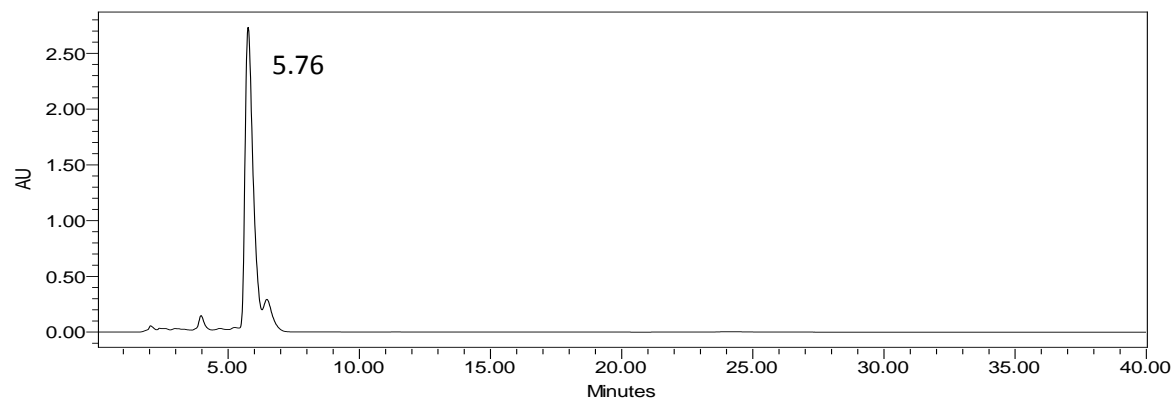
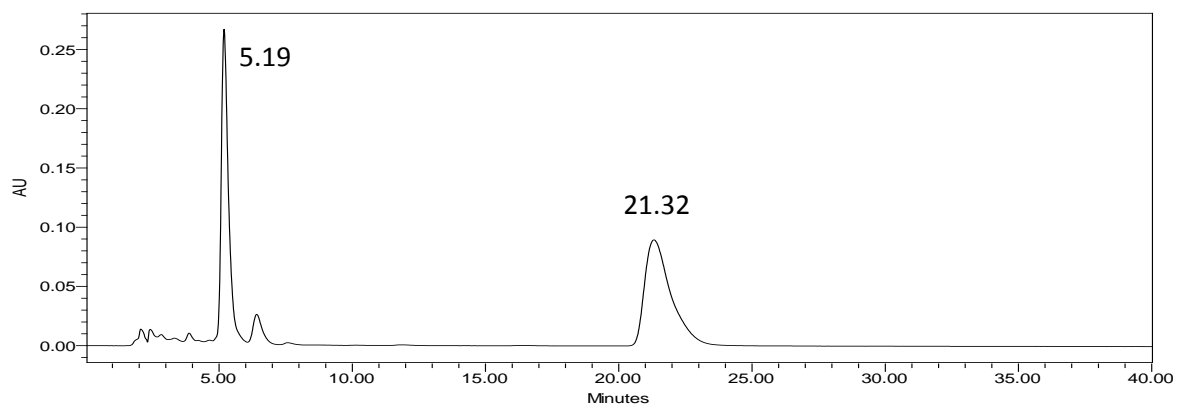


Figure S1: HPLC chromatograms at 270 nm of extracts displaying an anti-biofilm activity.

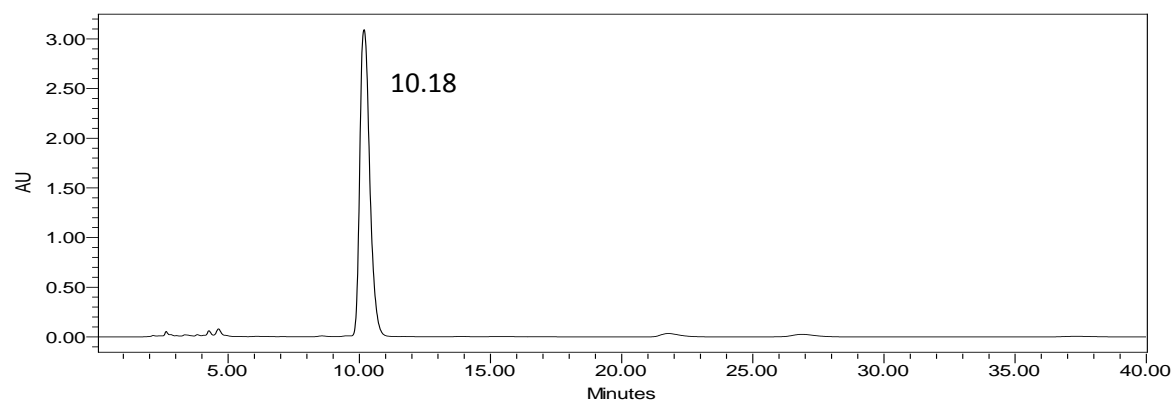
A- Cladonia ramulosa acetone extract



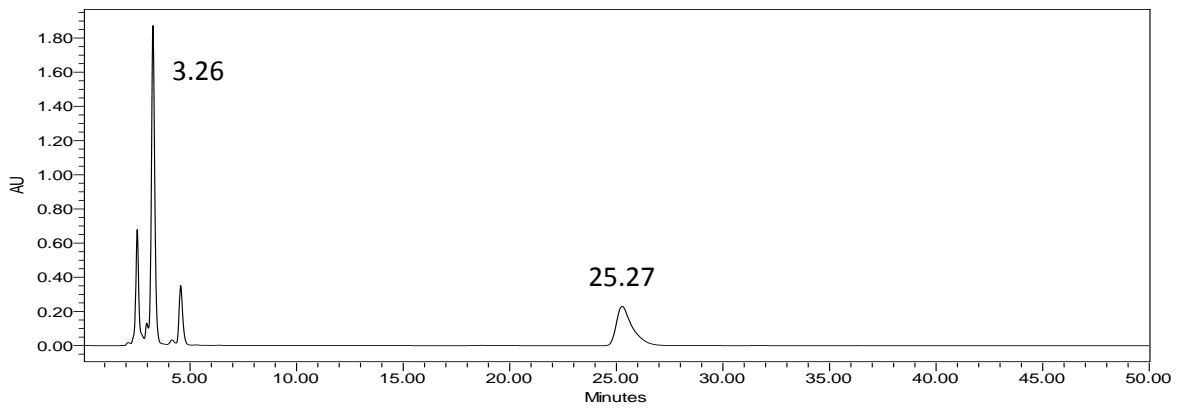
B- Cladonia uncialis acetone extract



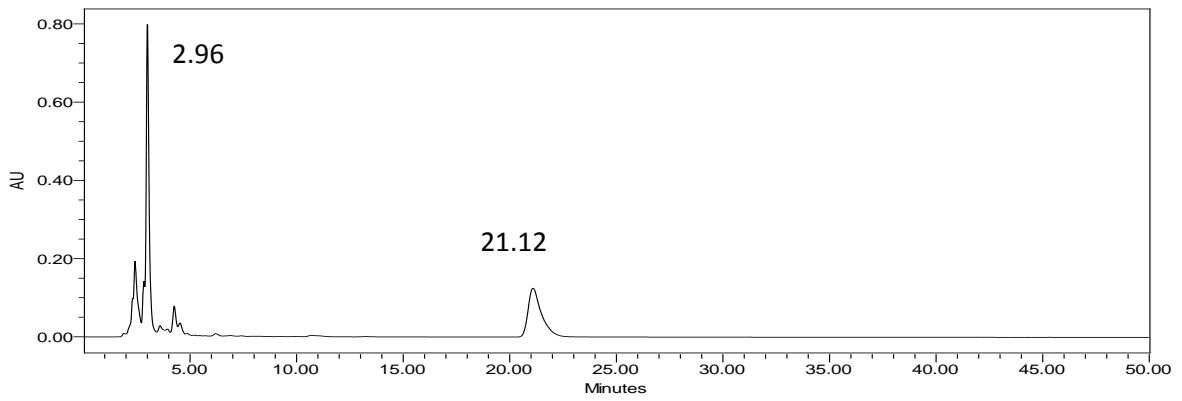
C- Evernia prunastri acetone extract



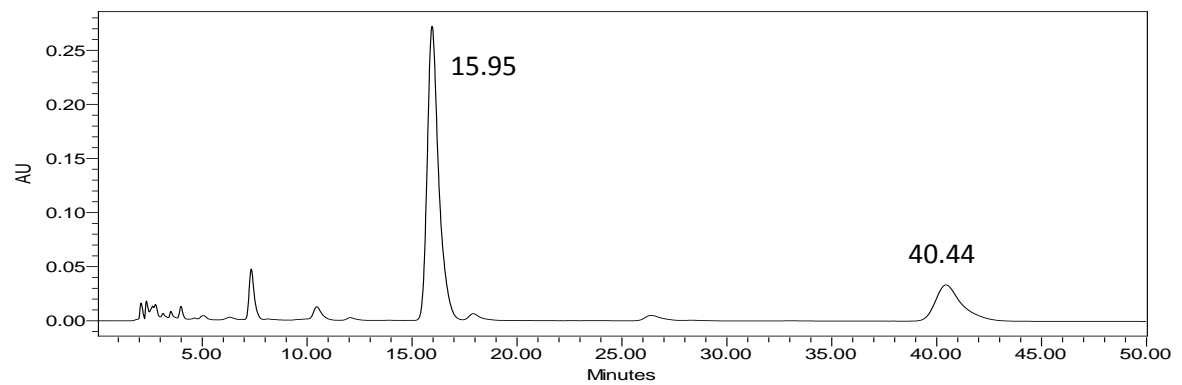
D- Xanthoparmelia conspersa acetone extract



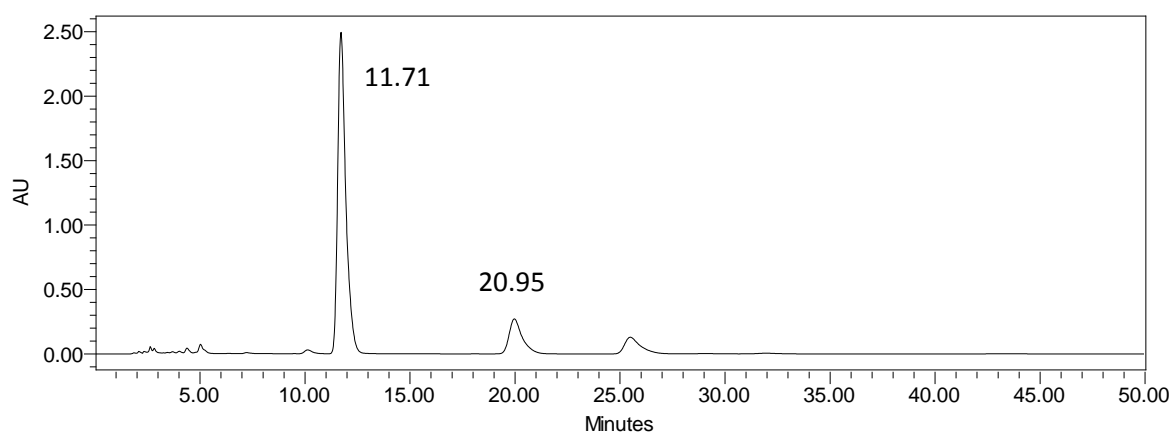
E- Xanthoparmelia tinctoria acetone extract



F- Peltigera hymenina acetone extract



G- *Ramalina fastigiata* acetone extract



Experimental – Supplementary Information

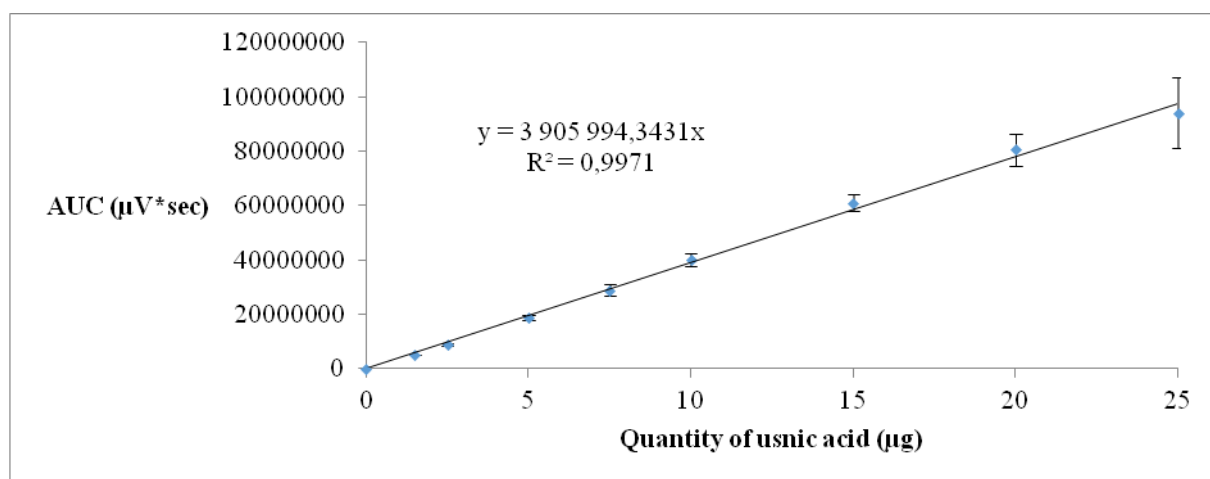


Figure S2: Usnic acid dosage by HPLC.

A calibration curve using usnic acid has been prepared in acetone in order to obtain concentrations ranging between 0.15 and 2.5 mg/mL. Ten microliters of the standard solution have been injected in triplicate.

Extracts have been solubilized in acetone in order to obtain a concentration of 1 mg/mL and 10µL have been injected. The area under the curve (AUC) has been taking to calculate the quantity of usnic acid in the *Usnea florida* and *Flavoparmelia caperata* extracts.

Table S1: Voucher reference number, date and place of collection of lichens.

Extract number	Lichens	Reference Herbarium	Date of collection	Place for collect City (Department)
1	<i>Anaptychia ciliaris</i>	HL-L04/14-01	05/04/2014	Cieux (87)
2	<i>Bryoria fuscescens</i>	HL-L10/09-10	06/10/2009	Peyrol (87)
3	<i>Cetraria islandica</i>	HL-L08/12-03	15/08/2012	L'Echo (73)
4	<i>Cetrelia olivetorum</i>	HL-L10/09-02	06/10/2009	Gouron-Murat (19)
5	<i>Cladonia fimbriata</i>	HL-L04/14-03	05/04/2014	Le Chatenet (87)
6	<i>Cladonia furcata</i>	HL-L10/11-29	17/10/2011	Les Roumilloux (19)
7	<i>Cladonia glauca</i>	HL-L10/11-08	20/10/2011	St Angel (19)
8	<i>Cladonia gracilis</i>	HL-L10/11-06	03/10/2011	Bussi ère-Boffy (87)
9	<i>Cladonia incrassata</i>	HL-L09/11-02	06/09/2011	Verneuil/Vienne (87)
10	<i>Cladonia parasitica</i>	HL-L09/11-15	15/09/2011	Verneuil/Vienne (87)
11	<i>Cladonia ramulosa</i>	HL-L10/11-03	03/10/2011	Bussi ère-Boffy (87)
12	<i>Cladonia rangiferina</i>	HL-L10/11-13	17/10/2011	Les Roumilloux (19)
13	<i>Cladonia scabriuscula</i>	HL-L10/11-02	03/10/2011	Landes de Frochet (87)
14	<i>Cladonia squamosa</i>	HL-L09/11-16	15/09/2011	Verneuil/Vienne (87)
15	<i>Cladonia subulata</i>	HL-L03/14-01	04/03/2014	Limoges (87)
16	<i>Cladonia uncialis</i>	HL-L10/11-11	18/10/2011	Soudeilles (19)
17	<i>Evernia prunastri</i>	HL-L01/14-01	05/01/2014	Verneuil/Vienne (87)
18	<i>Flavoparmelia caperata</i>	HL-L10/11-01	18/10/2011	Soudeilles (19)
19	<i>Hypogymnia physodes</i>	HL-L10/09-07	05/10/2009	Serandon (19)
20	<i>Lasallia pustullata</i>	HL-L10/11-09	03/10/2011	Bussi ère-Boffy (87)
21	<i>Lepraria membranacea</i>	HL-L10/11-12	17/10/2011	Les Rouchilloux (19)
22	<i>Leprocaulon microscopicum</i>	HL-L10/09-05	05/10/2009	S érandon (19)
23	<i>Neofuscellia pulla</i>	HL-L04/14-12	07/04/2014	Limoges (87)
24	<i>Nephroma parile</i>	HL-L12/09-02a	06/12/2009	Masl ón (87)
25	<i>Parmelia saxatilis</i>	HL-L07/10-02	12/07/2010	Crozat (87)
26	<i>Parmelia sulcata</i>	HL-L04/14-10	07/04/2014	Limoges (87)
27	<i>Platismatia glauca</i>	HL-L10/09-11	06/10/2009	Gourdon-Murat (87)
28	<i>Pleurosticta acetabulum</i>	HL-L10/11-26	20/11/2011	Les Ullis (91)
29	<i>Peltigera collina</i>	HL L10/14-01	03/10/2014	Soudeilles (19)
30	<i>Peltigera horizontalis</i>	HL-L05/14-02	10/05/2014	Largillat (25)
31	<i>Peltigera hymenina</i>	HL-L10/11-25	20/10/2011	St Angel (19)
32	<i>Peltigera rufescens</i>	HL-L06/12-01	24/06/2012	La Roque Gageac (24)
33	<i>Peseudevernia furfuracea</i>	HL-L05/14-01	10/05/2014	Largillat (25)
34	<i>Ramalina fastigiata</i>	HL-L04/14-09	05/04/2014	Cieux (87)
35	<i>Usnea florida</i>	HL-L10/11-31	19/10/2011	St Merd les Oussines (19)
36	<i>Xanthoparmelia conspersa</i>	HL-L04/14-11	07/04/2014	Limoges (87)
37	<i>Xanthoparmelia tinctina</i>	HL-L04/14-13	07/04/2014	Limoges (87)
38	<i>Xanthoria parietina</i>	HL-L03/14-04	14/03/2014	Limoges (87)