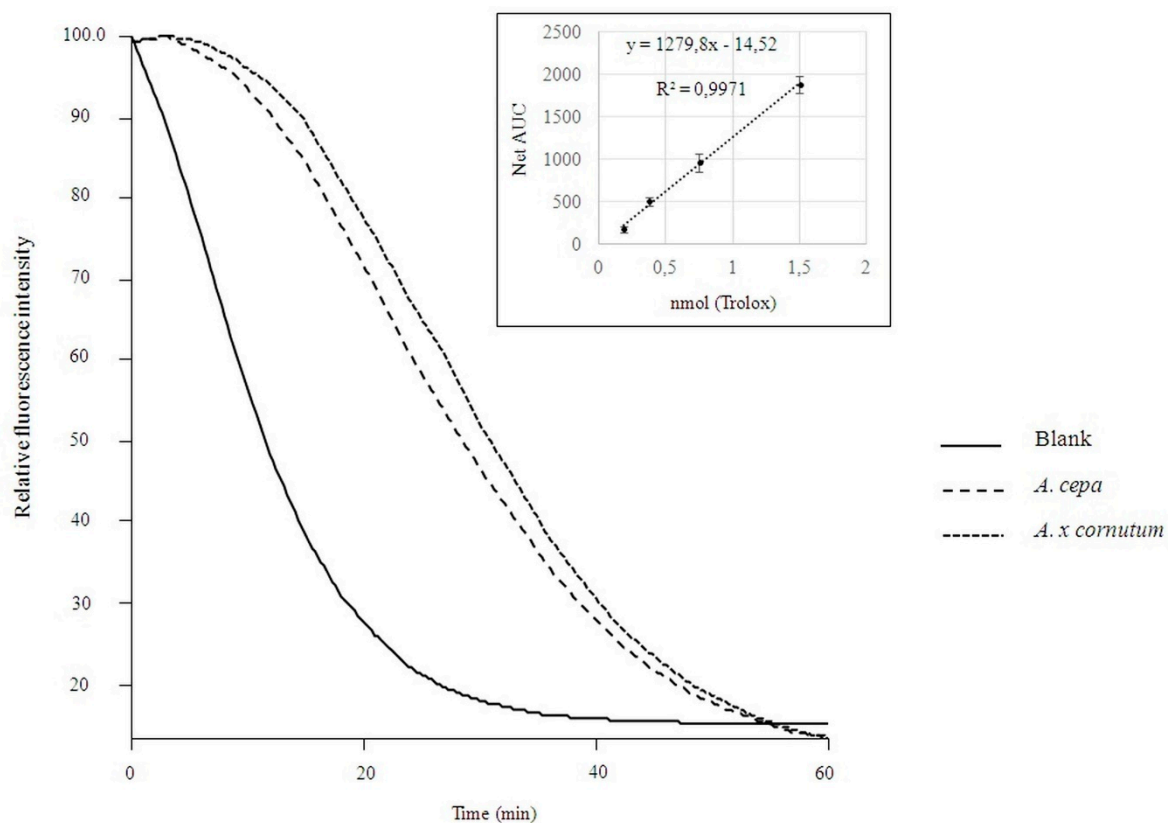
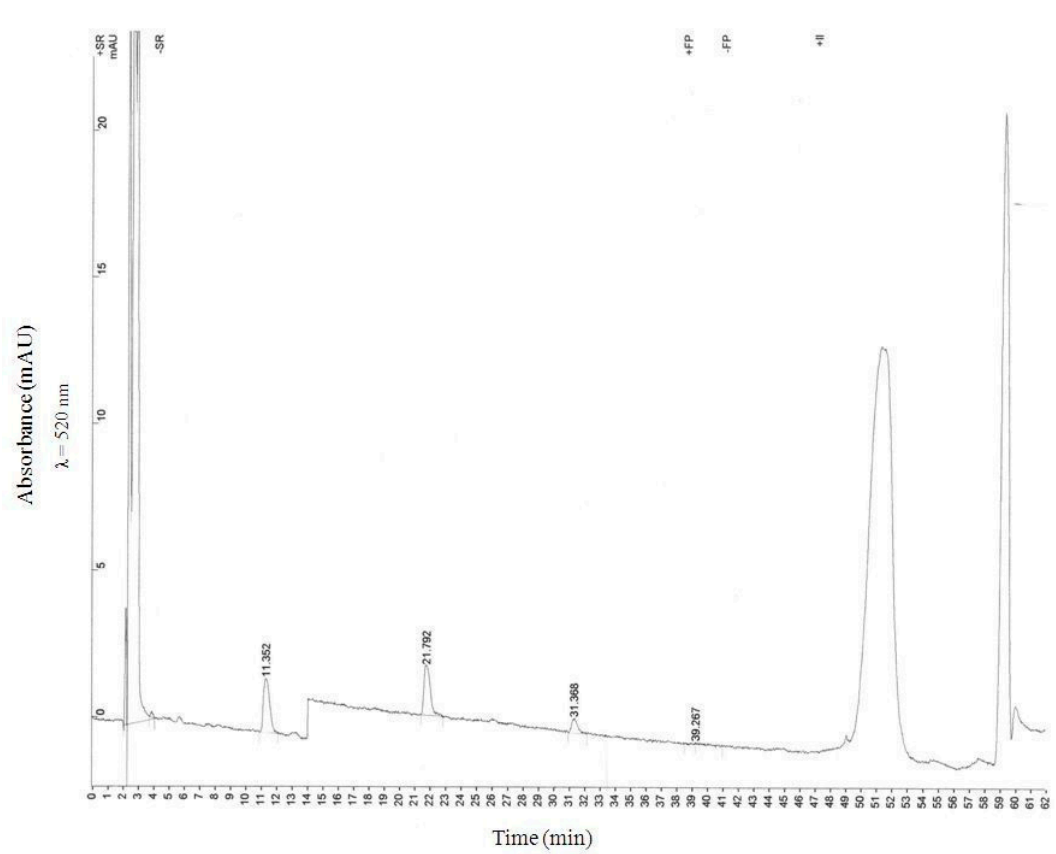


# Chemical Composition and Biological Activity of *Allium cepa* L. and *Allium × cornutum* (Clementi ex Visiani 1842) Methanolic Extracts

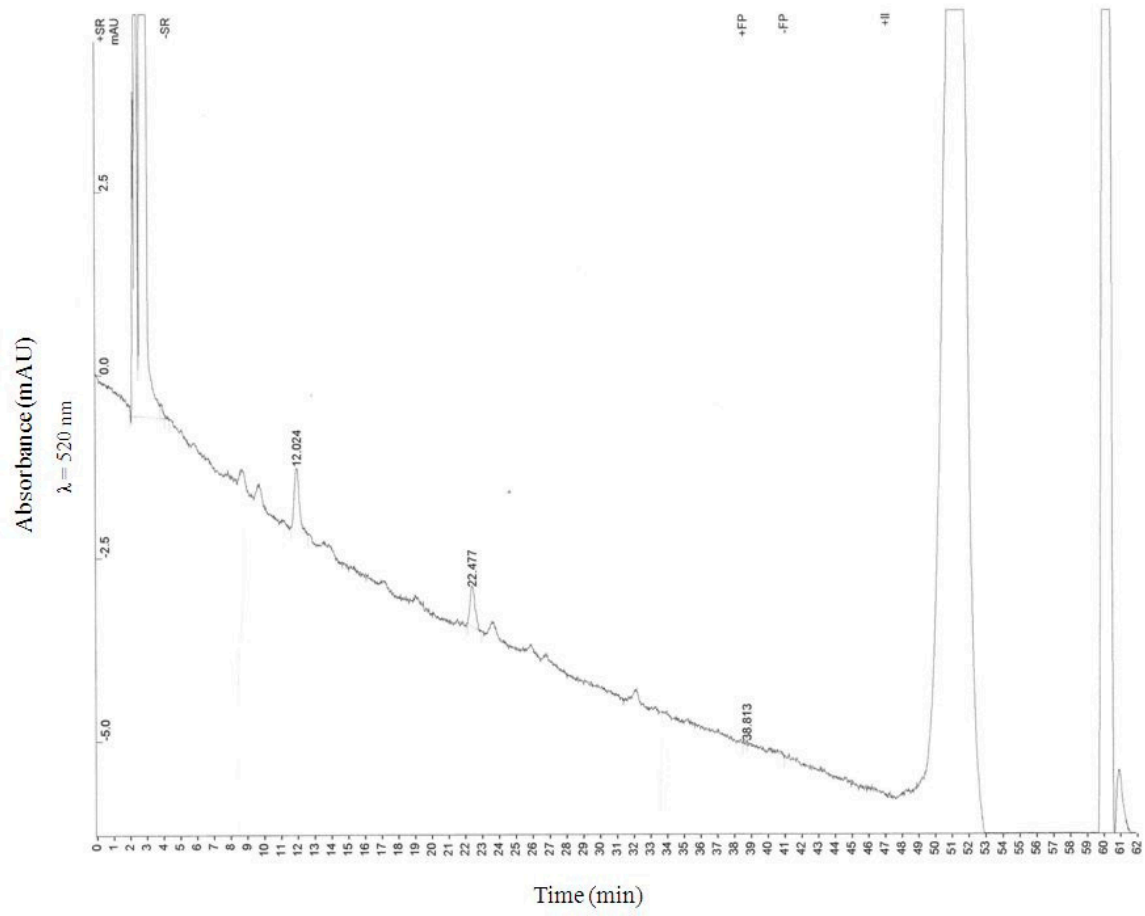
Željana Fredotović, Matilda Šprung, Barbara Soldo, Ivica Ljubenković, Irena Budić-Leto, Tea Bilušić, Vedrana Čikeš-Čulić and Jasna Puizina



**Figure S1.** Fluorescence decay curve of methanolic extracts of *A. cepa* (- - -), *A. × cornutum* (-·-) and blank (—).



**Figure S2.** High-performance liquid chromatography (HPLC) chromatogram of *A. x cornutum* anthocyanins at 520 nm. Depicted are peaks: peonidine 3'-glucoside, petunidin 3'-glucoside, delphinidin 3'-glucoside and malvidin 3'-glucoside.



**Figure S3.** High-performance liquid chromatography chromatogram of *A. cepa* anthocyanins at 520 nm. Depicted are peaks: peonidine 3'-glucoside, petunidin 3'-glucoside and malvidin 3'-glucoside.