

## *Supplementary Data*

# **Metabolomic Approach for Discrimination of Red Ginseng Root Parts and Targeted Validation**

### **Contents**

Figure S1. Selected ion intensity trend plot and EIC for ion <b>a</b>	2
Figure S2. Selected ion intensity trend plot and EIC for ion <b>b</b>	3
Figure S3. Selected ion intensity trend plot and EIC for ion <b>c</b>	4
Figure S4. Selected ion intensity trend plot and EIC for ion <b>d</b>	5
Figure S5. Selected ion intensity trend plot and EIC for ion <b>e</b>	6
Figure S6. Selected ion intensity trend plot and EIC for ion <b>f</b>	7
Figure S7. Selected ion intensity trend plot and EIC for ion <b>g</b>	8
Figure S8. Selected ion intensity trend plot and EIC for ion <b>h</b>	9
Figure S9. Selected ion intensity trend plot and EIC for ion <b>i</b>	10
Figure S10. Selected ion intensity trend plot and EIC for ion <b>j</b>	11
Figure S11. Selected ion intensity trend plot and EIC for ion <b>k</b>	12
Figure S12. Selected ion intensity trend plot and EIC for ion <b>l</b>	13
Figure S13. PCA score plot (main root, lateral roots, and fine root)	14
Figure S14. OPLS-DA score plot (main root and fine root)	14
Figure S15. The <sup>1</sup> H NMR spectrum of compound <b>1</b> (marker 6)	15
Figure S16. The <sup>13</sup> C NMR spectrum of compound <b>1</b> (marker 6)	16

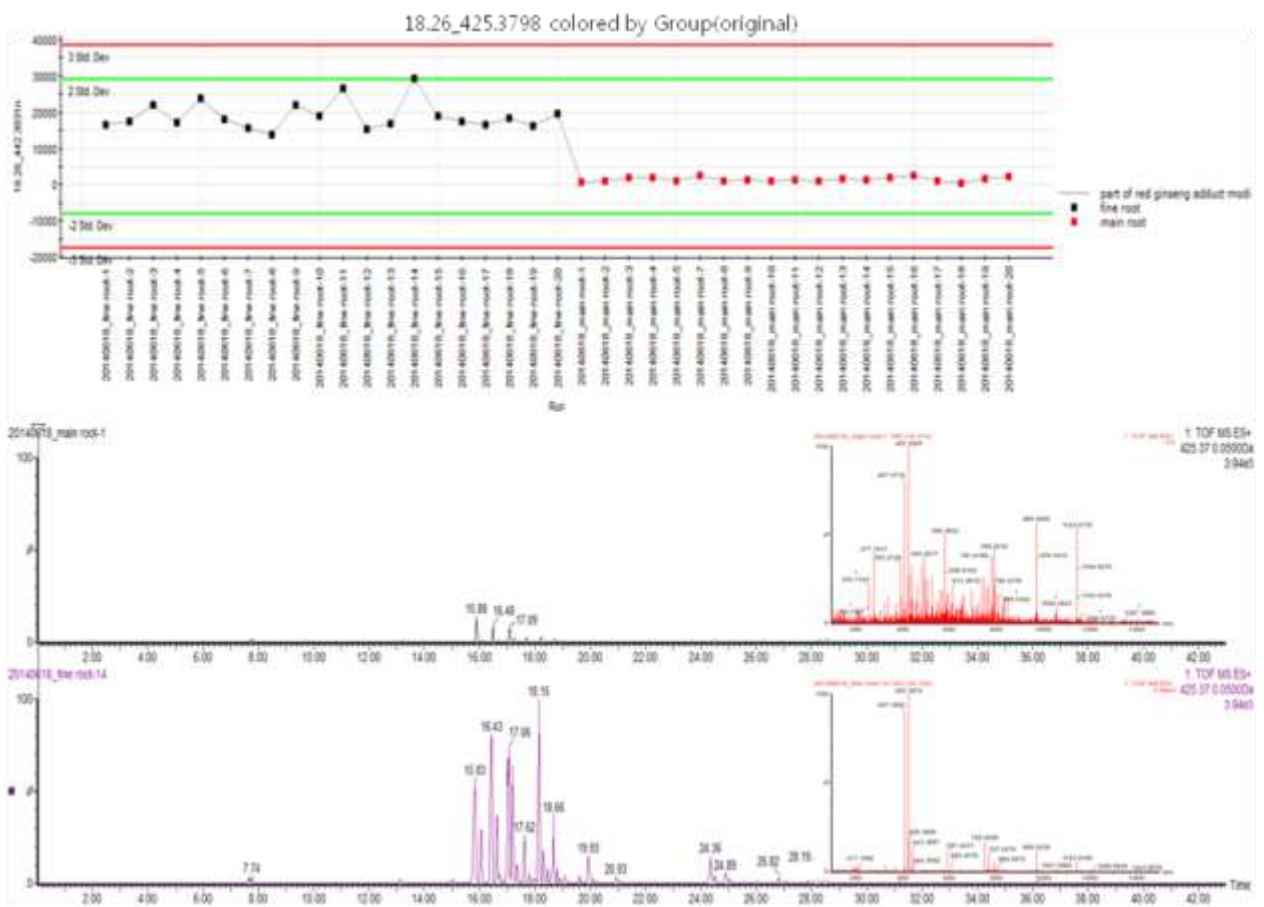


Figure S1. Selected ion intensity trend plot & EIC for ion a

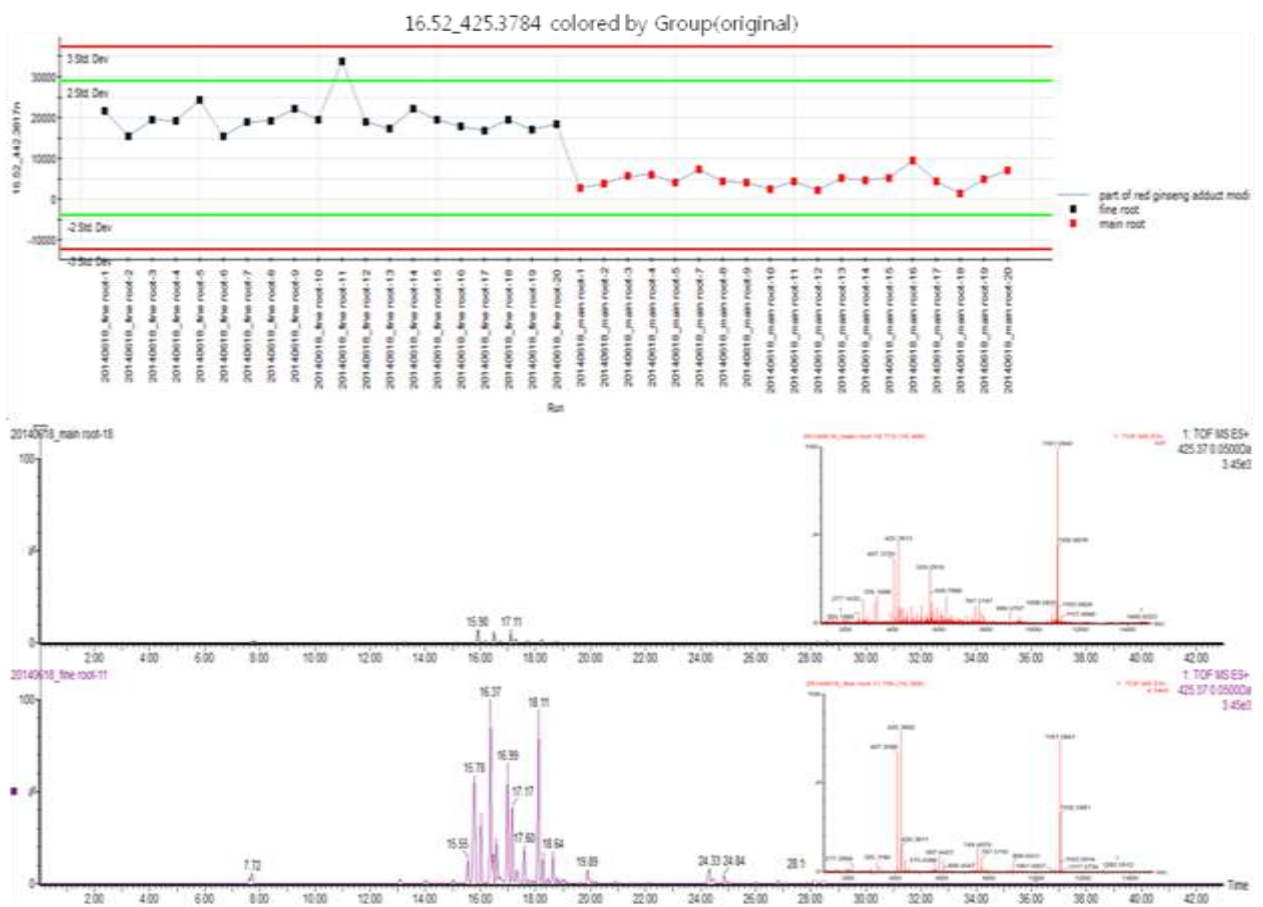


Figure S2. Selected ion intensity trend plots & EIC for ion **b**

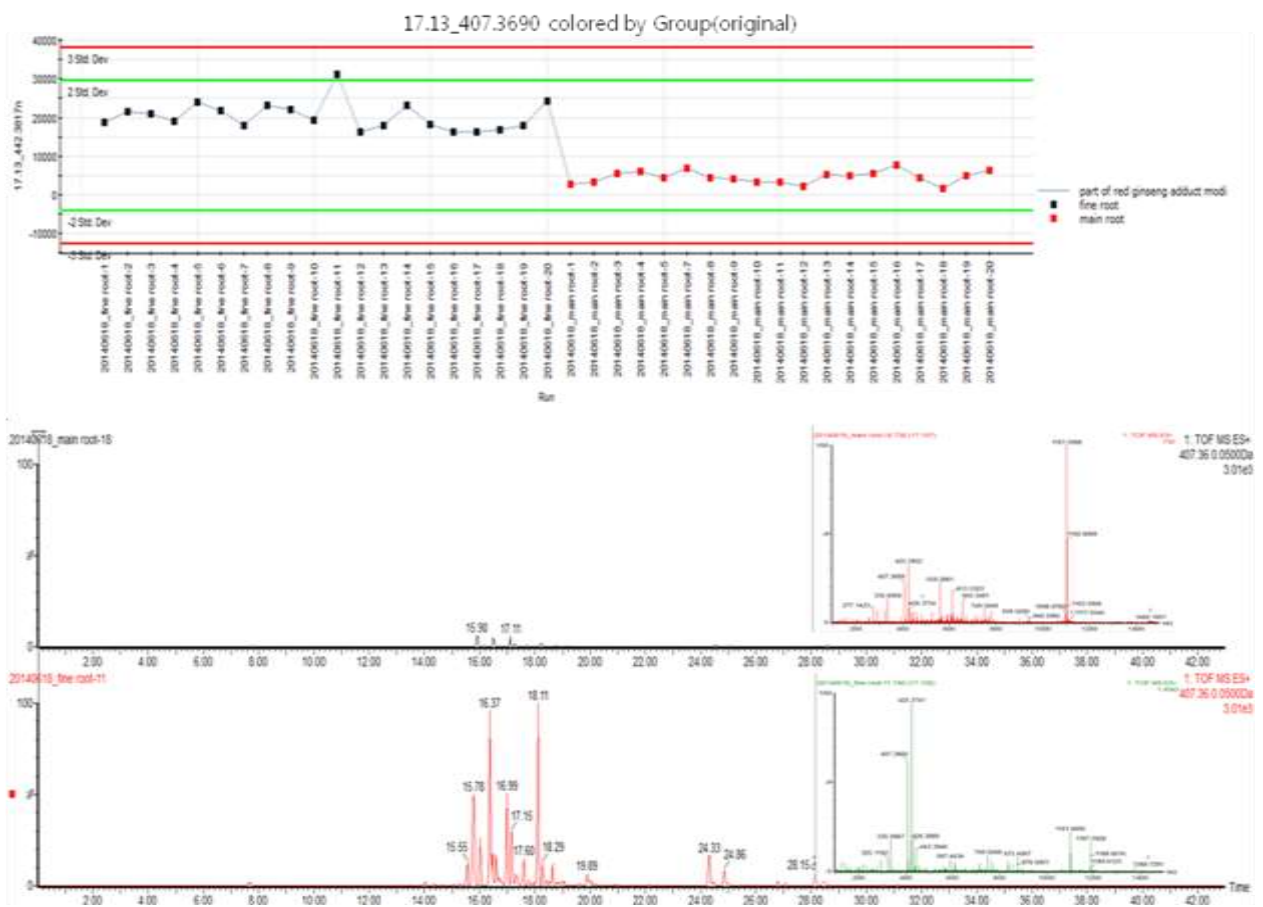


Figure S3. Selected ion intensity trend plots & EIC for ion c

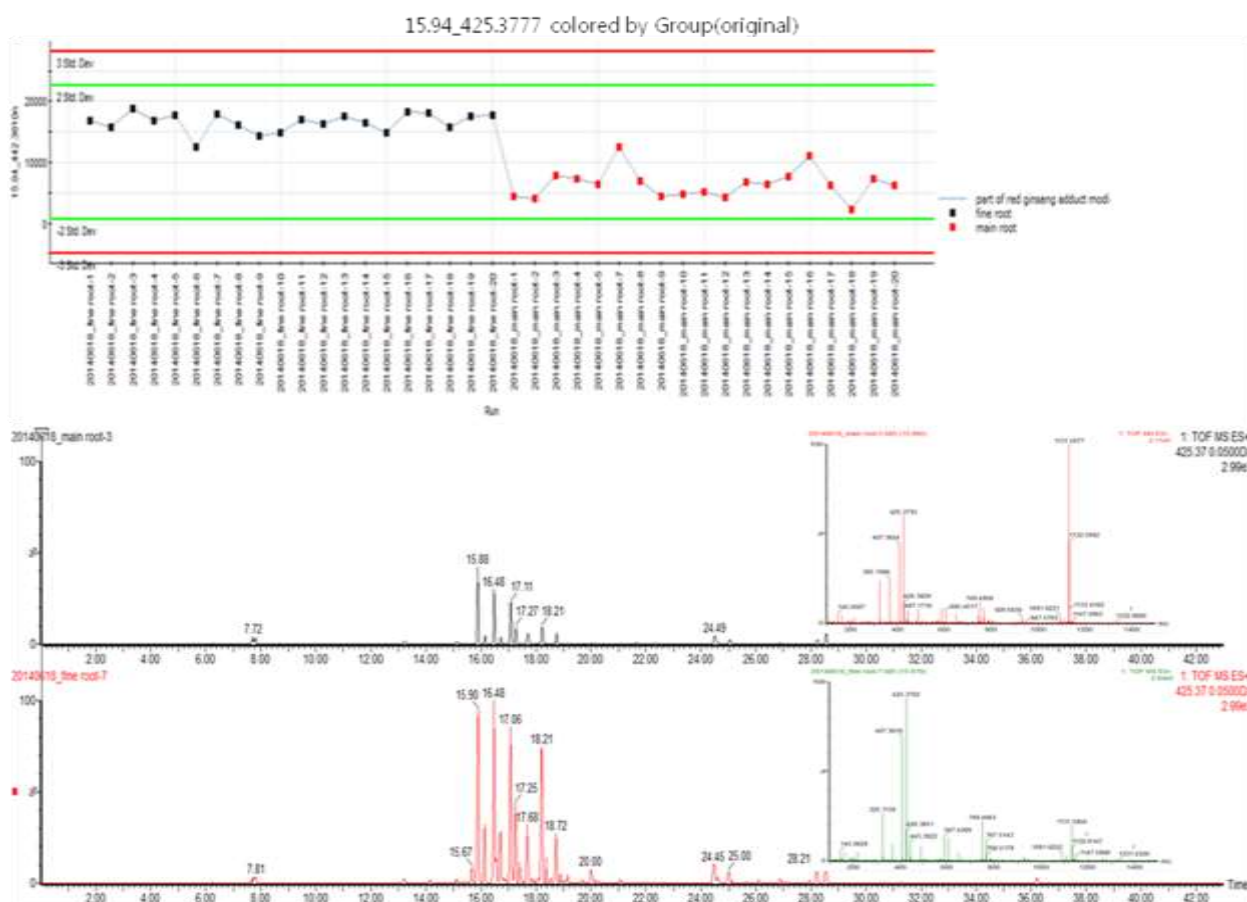


Figure S4. Selected ion intensity trend plots & EIC for ion **d**

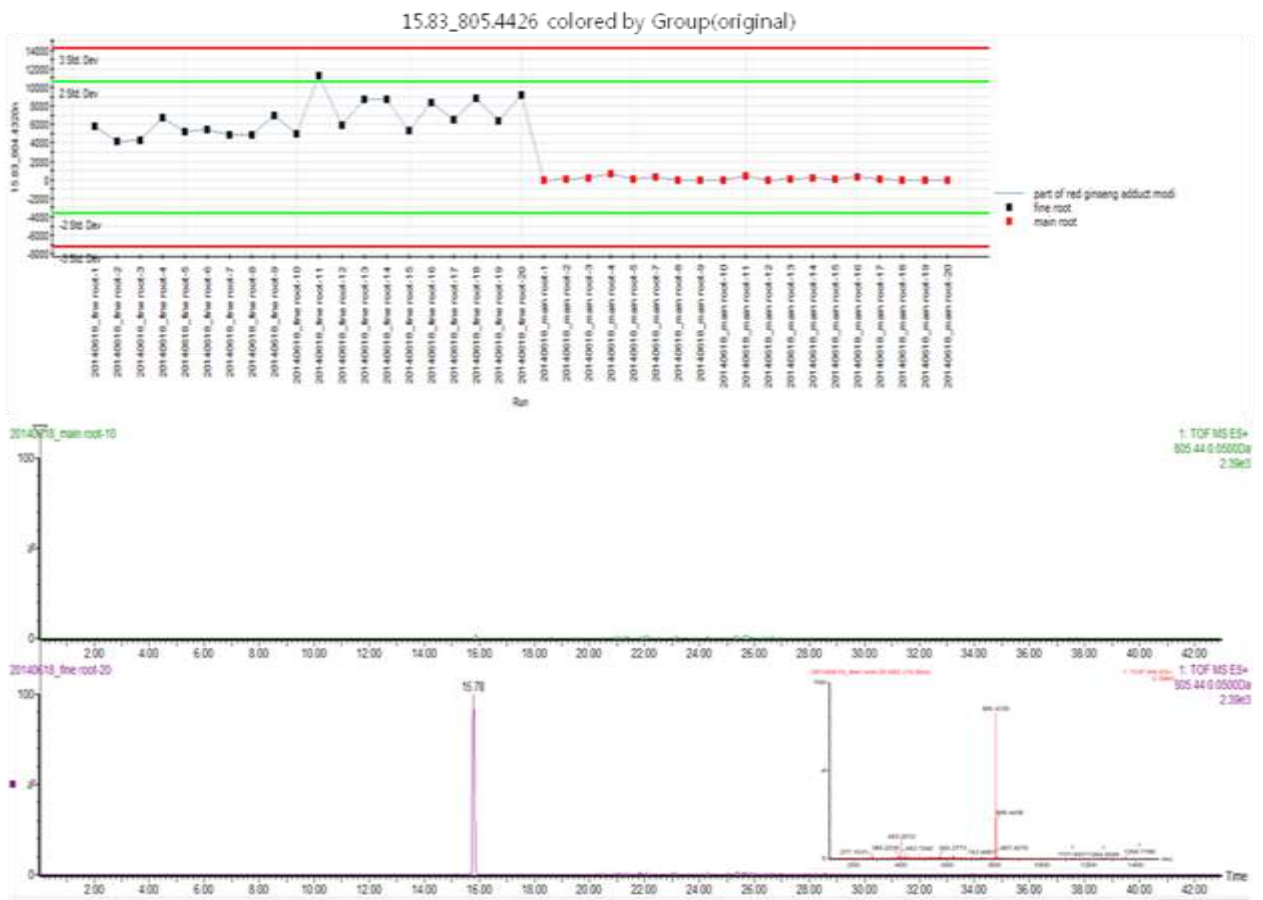


Figure S5. Selected ion intensity trend plots & EIC for ion e

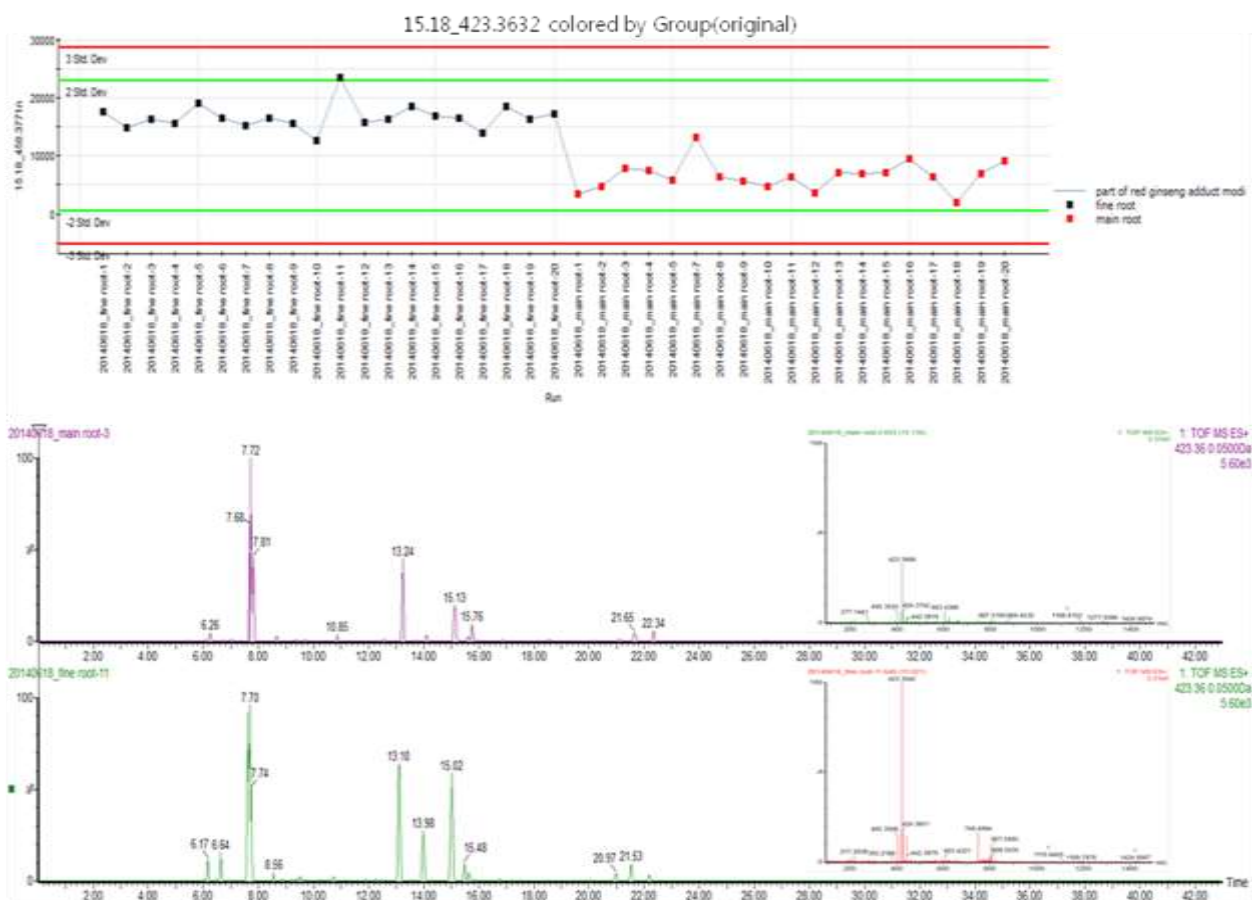


Figure S6. Selected ion intensity trend plots & EIC for ion f

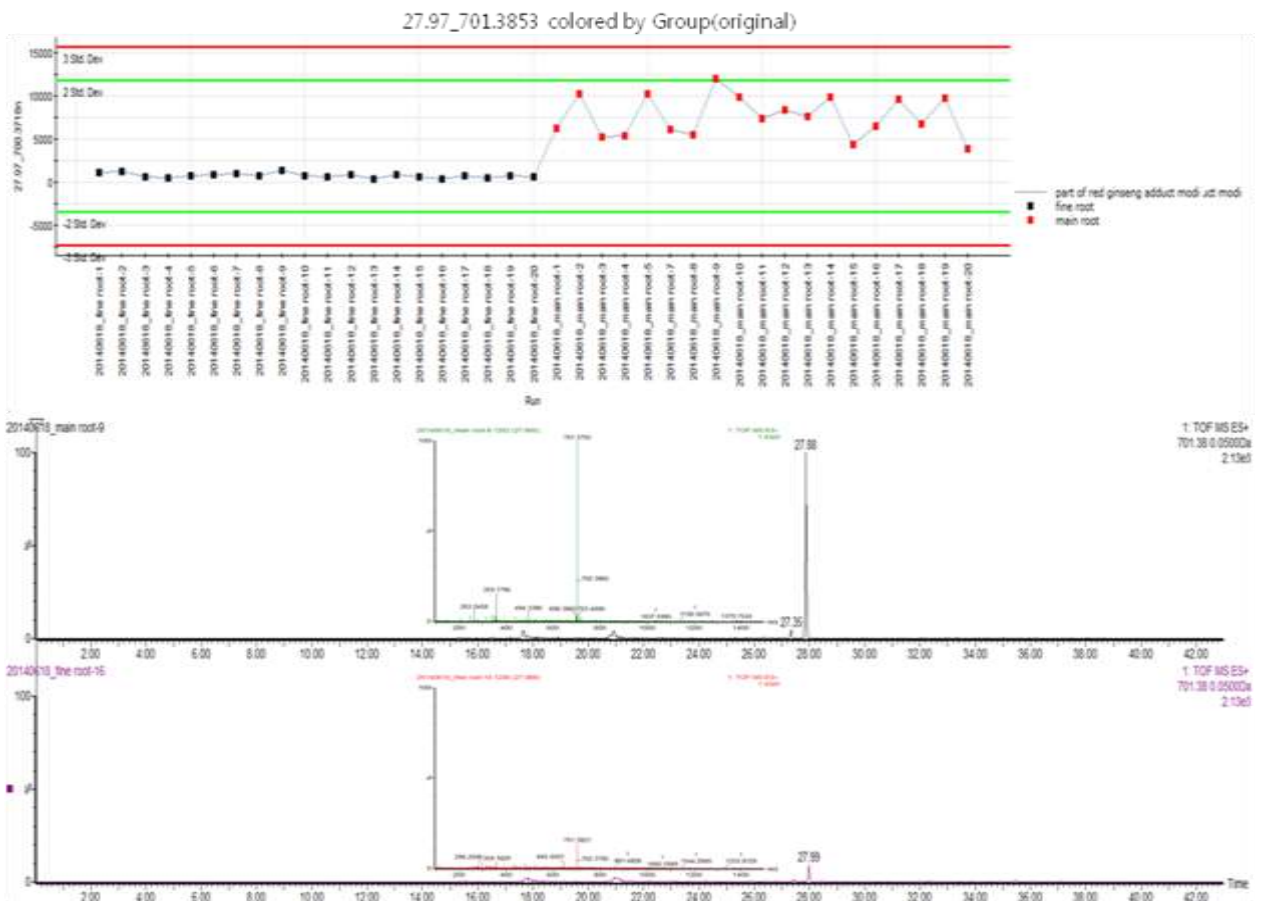


Figure S7. Selected ion intensity trend plots & EIC for ion g





Figure S8. Selected ion intensity trend plots & EIC for ion **h**

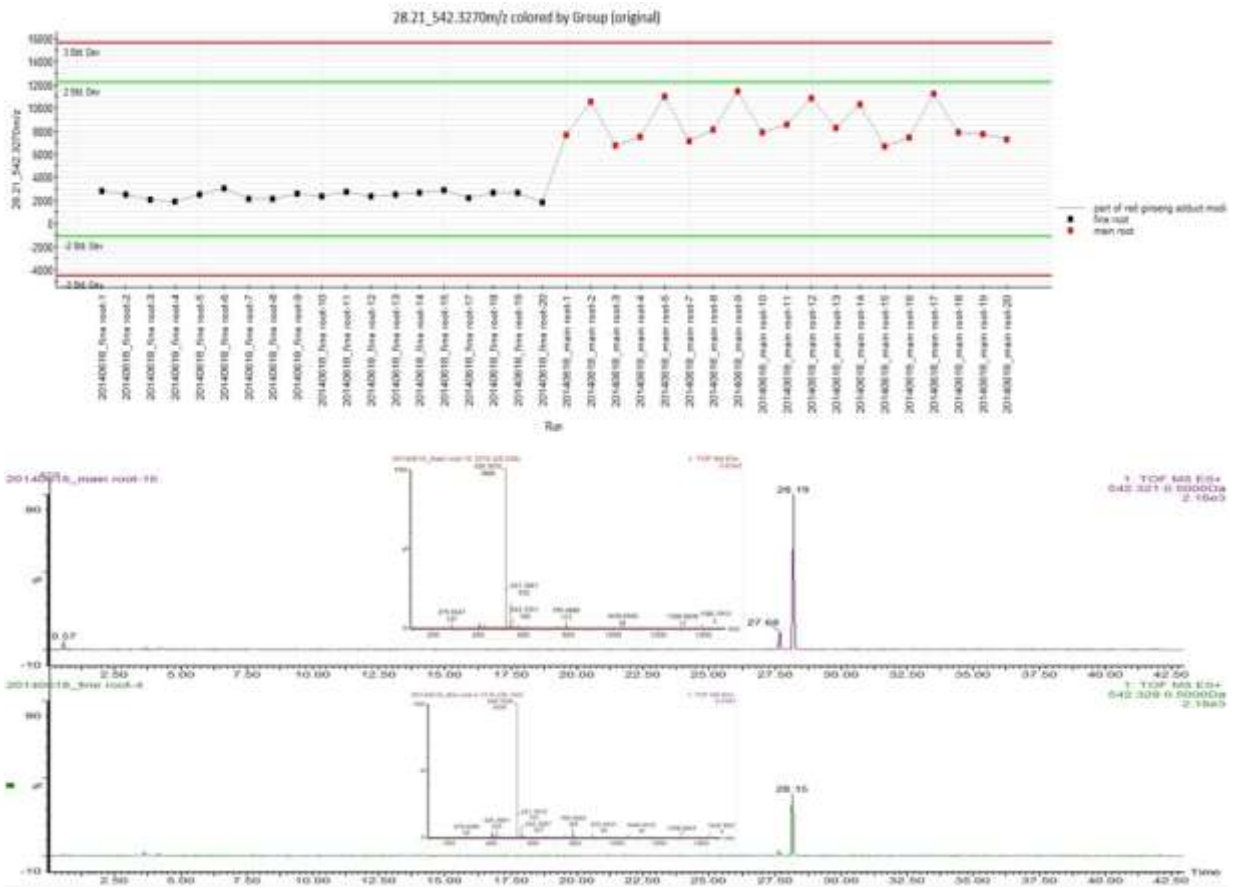


Figure S9. Selected ion intensity trend plots & EIC for ion i

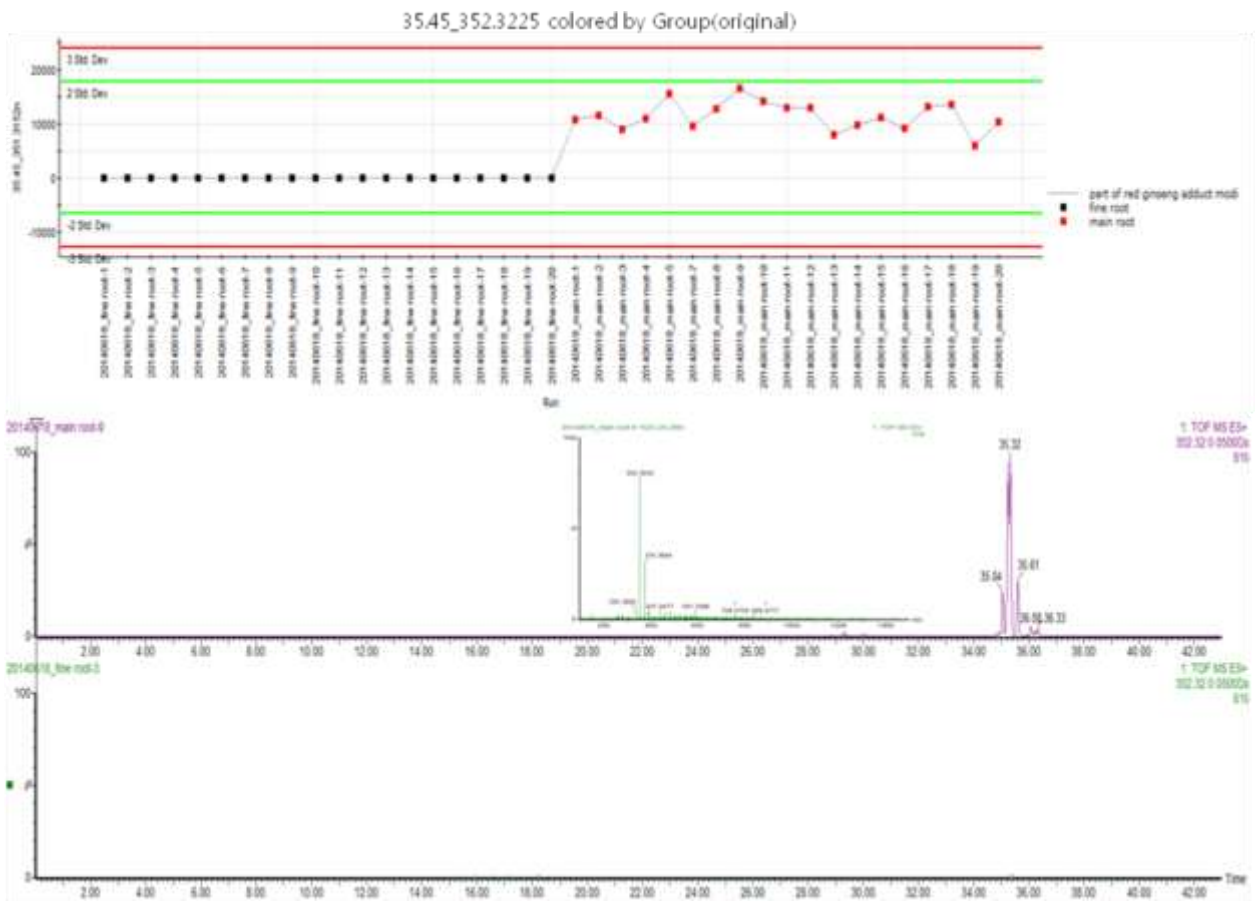


Figure S10. Selected ion intensity trend plots & EIC for ion j

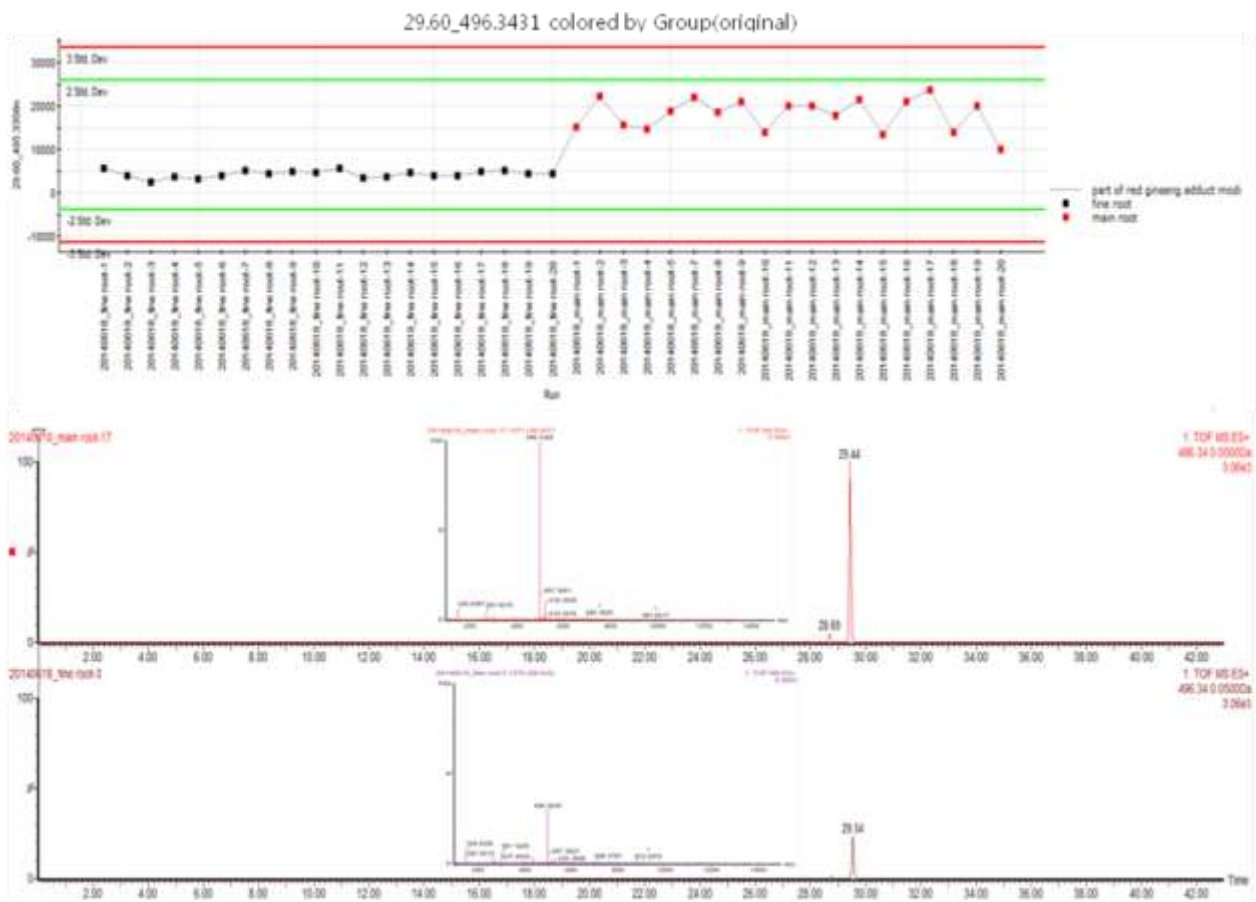


Figure S11. Selected ion intensity trend plots & EIC for ion k

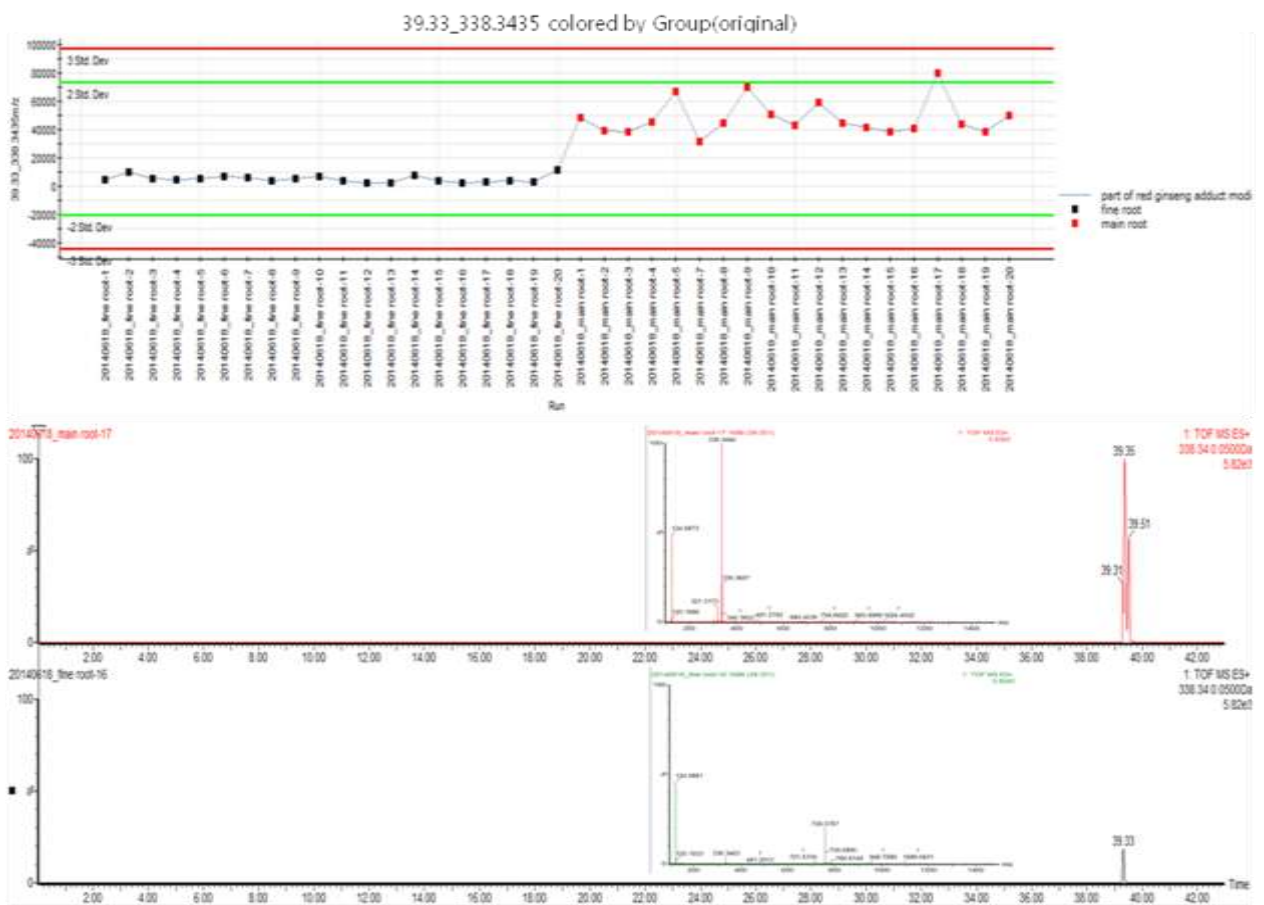


Figure S12. Selected ion intensity trend plots & EIC for ion 1

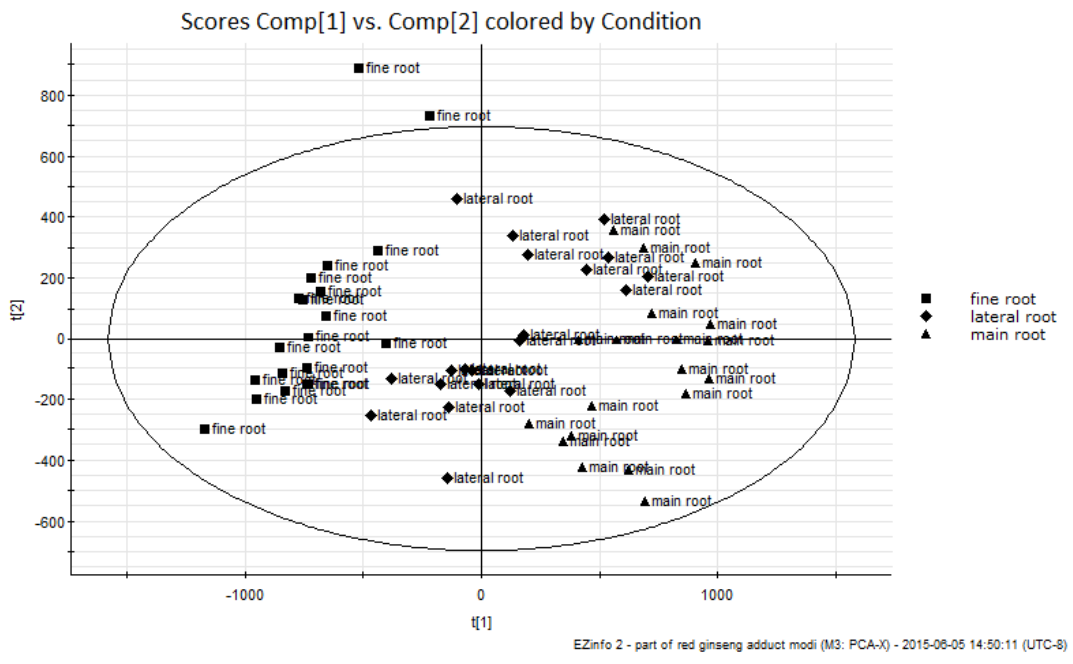


Figure S13. PCA score plot (main root, lateral root, and fine root)

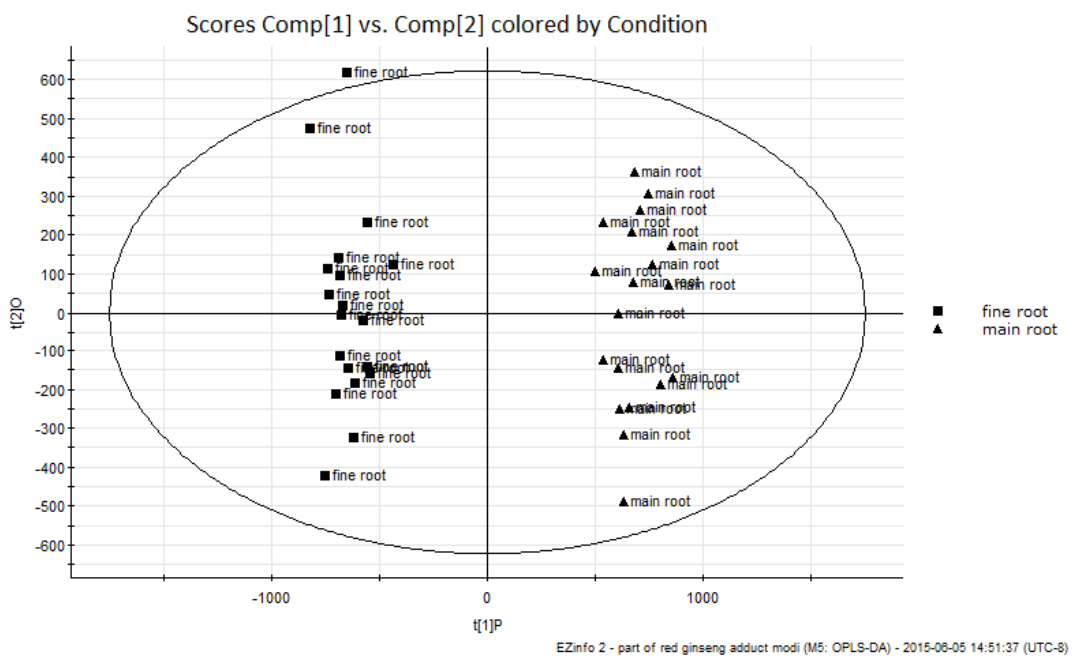


Figure S14. OPLS-DA score plot (main root and fine root)

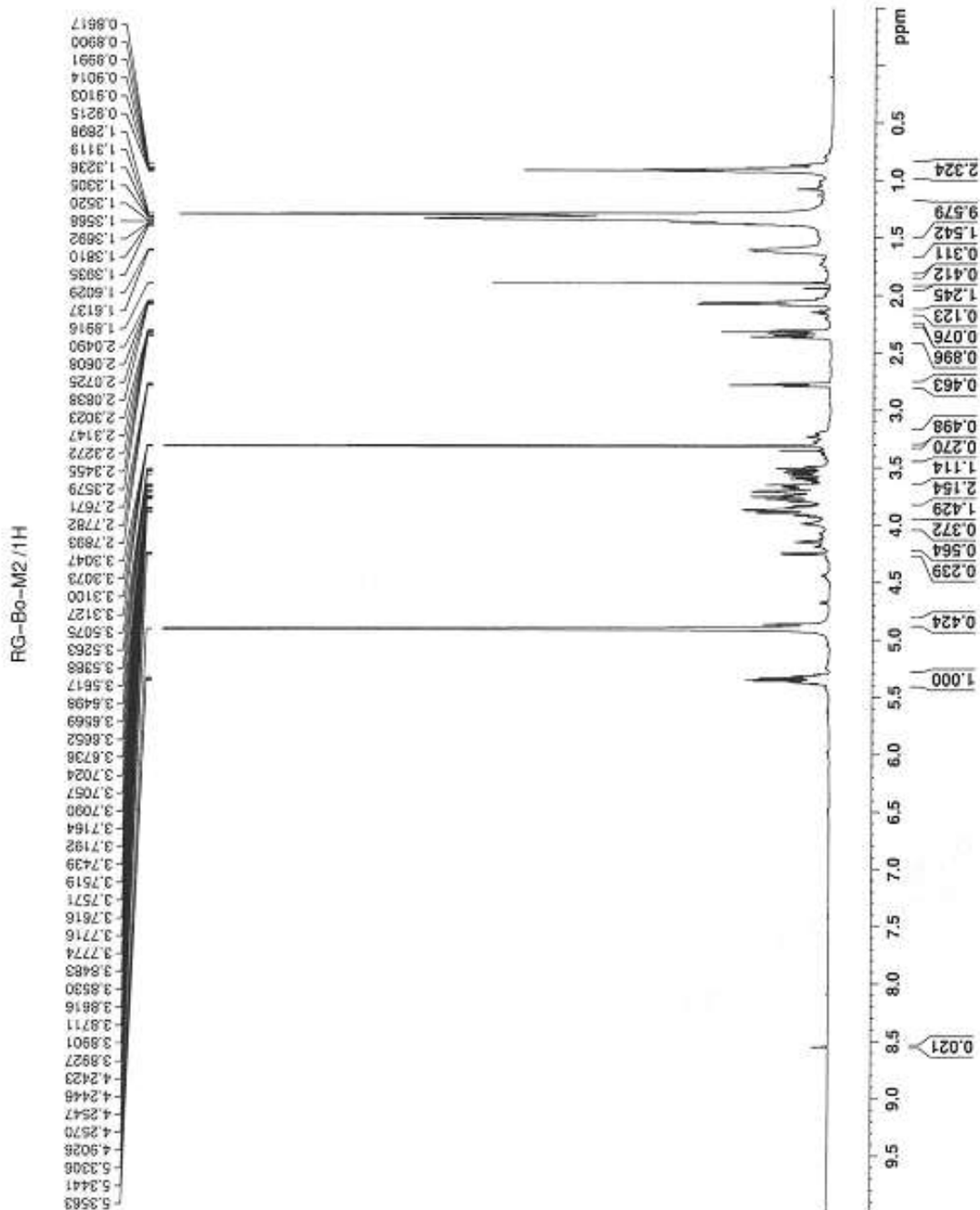
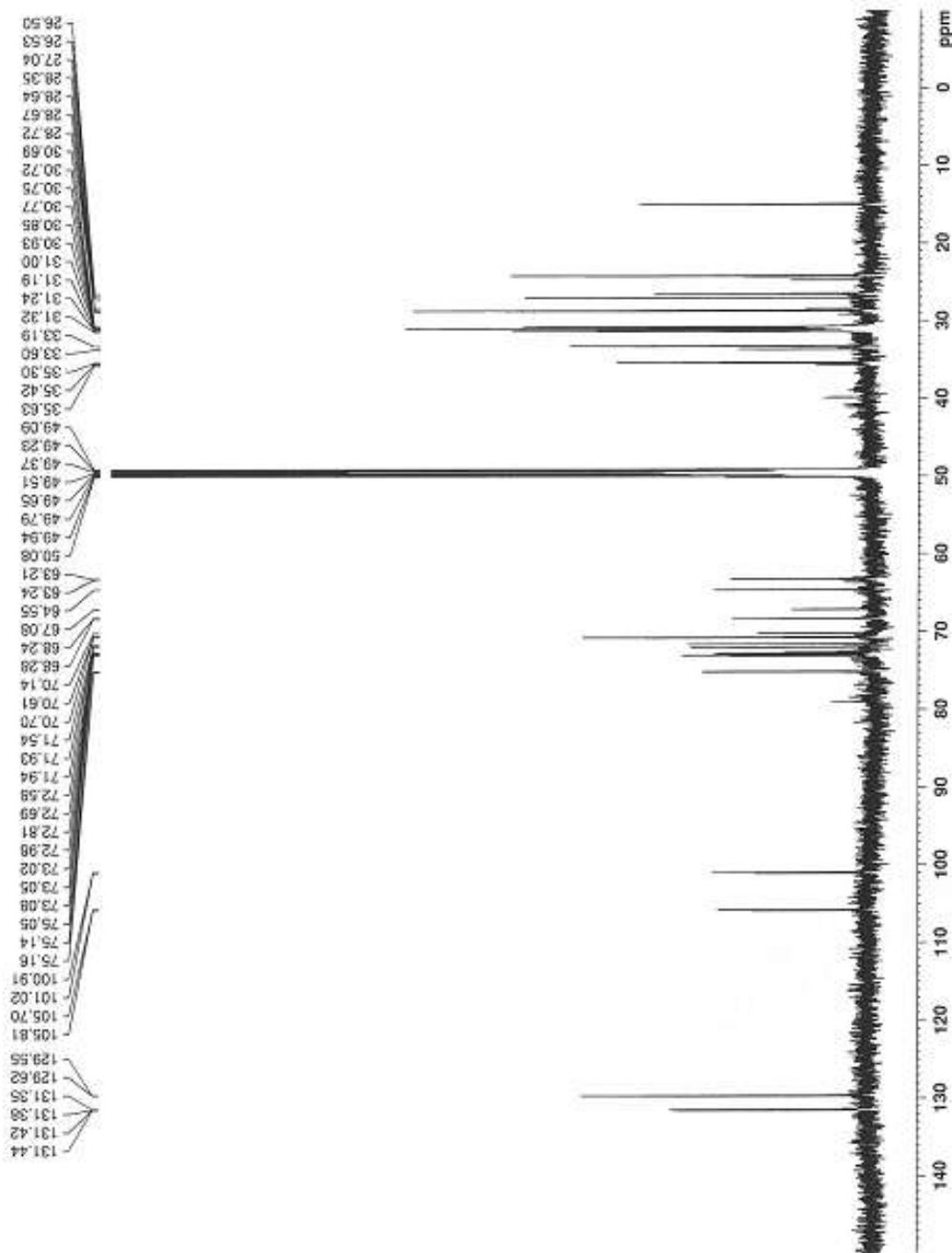


Figure S15. The <sup>1</sup>H NMR spectrum of compound 1 (ion g)

RG-Bo-M2/13C



Current Data Parameters  
 NAME nar24-Kgc-jgh  
 EXPNO 6  
 PROCNO 1

F2 - Acquisition Parameters  
 Date\_ 20150325  
 Time 9.06  
 INSTRUM spect  
 PROBHD 5 mm TXI 13C X  
 PULPROG zgpg30  
 TD 83536  
 SOLVENT MeOD  
 NS 11264  
 DS 4  
 SFO1 42613.637 Hz  
 FIDRES 0.650232 Hz  
 AQ 0.7689557 sec  
 RG 512  
 DW 11.733 usec  
 DE 30.00 usec  
 TE 298.0 K  
 D1 1.00000000 sec  
 D11 0.01000000 sec  
 TD0 1

===== CHANNEL f1 =====  
 SFO1 150.9194083 MHz  
 NUC1 13C  
 P1 14.20 usec  
 PL1 100.0000000 W

===== CHANNEL f2 =====  
 SFO2 600.1342009 MHz  
 NUC2 1H  
 CFPDPRG12 waltz16  
 PCPD2 70.00 usec  
 PL12 4.00000000 W  
 PL13 0.07558200 W  
 PL14 0.03500000 W

F2 - Processing parameters  
 SI 32768  
 SF 150.9028211 MHz  
 RGW 0  
 SSB 0  
 AB 1.00 Hz  
 GB 0  
 PC 1.00

Figure S16. The <sup>13</sup>C NMR spectrum of compound 1 (ion g)