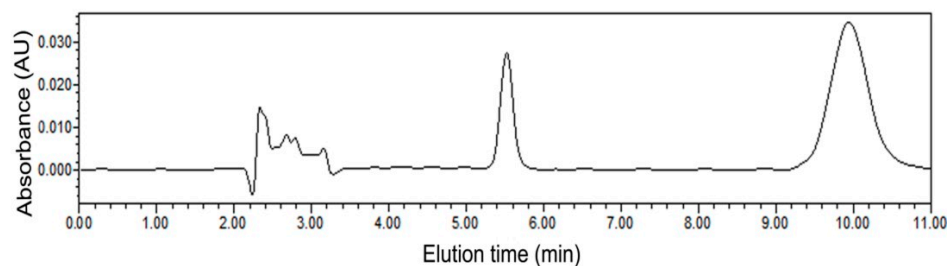
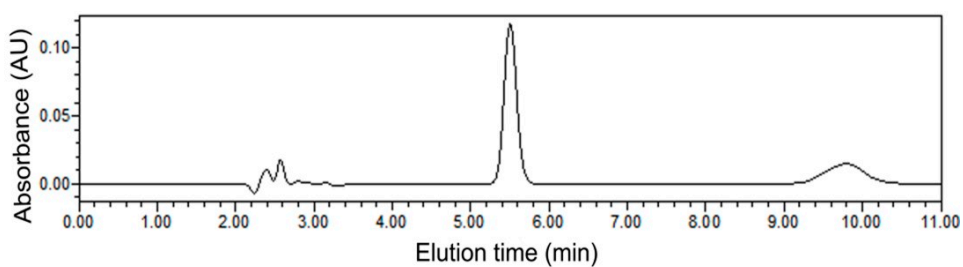
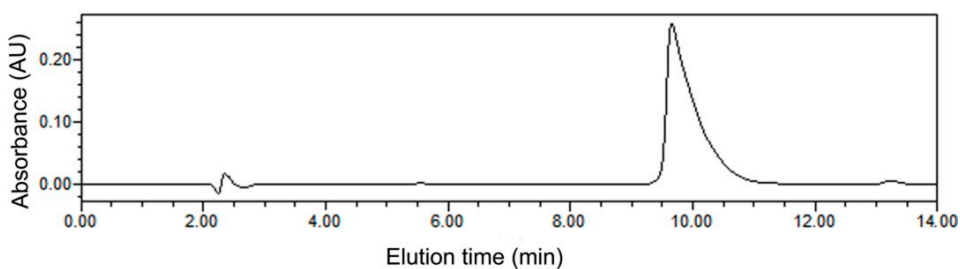
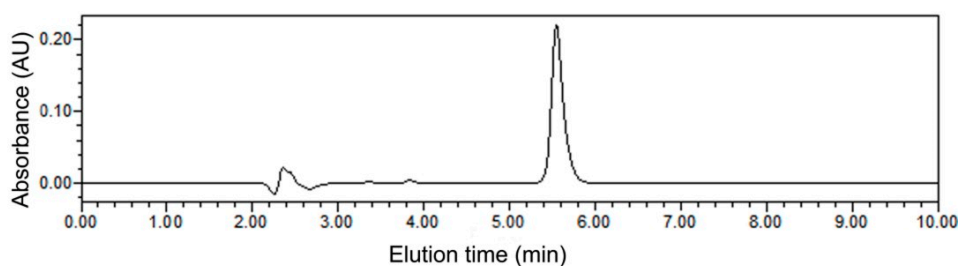
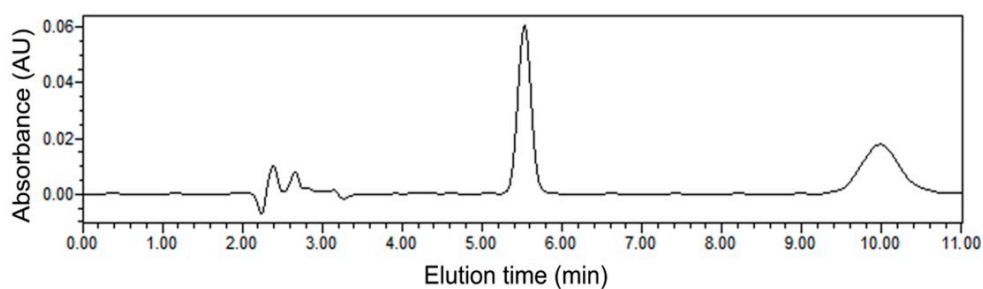


Supplementary Materials: A Novel Antihypertensive Derived from Adlay (*Coix lachryma-jobi* L. var. *mayuen Stapf*) Glutelin

Bin Li, Liansheng Qiao, Lingling Li, Yanling Zhang, Kai Li, Lingzhi Wang and Yanjiang Qiao

The peaks of HA and HHL standard eluted out of C₁₈ column were showed in Figure S1A,B, respectively. The negative control peak of borate buffer was showed in Figure S1 and the positive control of Captopril demonstrated a significant ACE inhibitory ratio of 86.43% at a concentration of 2×10^{-8} mol·L⁻¹ (Figure 1D). The HA concentration of the CGH (Figure 1E) sharply decreased compared with the negative control.





(E)

Figure S1. RP-HPLC chromatograms of (A) HA standard; (B) HHL standard; (C) blank control; (D) captopril of $2 \times 10^{-8} \text{ mol}\cdot\text{L}^{-1}$; and (E) the CGH ($\leq 3 \text{ kDa}$) obtained under 0.1 Mpa UF pressure (final concentration of $0.02 \text{ mg}\cdot\text{L}^{-1}$).

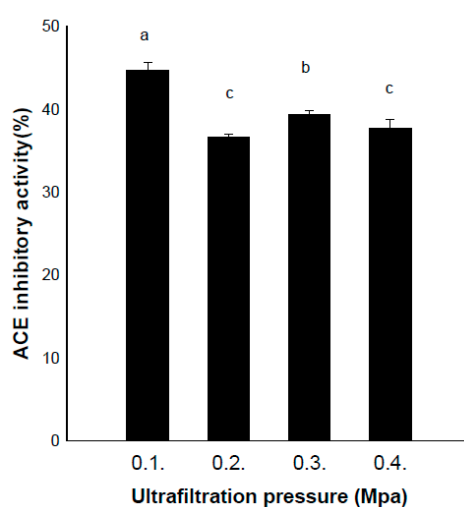


Figure S2. The ACE inhibitory activity of CGH ($\leq 3 \text{ kDa}$) obtained under different pressure. The samples were measured at the final concentration of $0.02 \text{ mg}\cdot\text{L}^{-1}$. Different letters above the column indicated the percentage of ACE-inhibitory activity were significantly different ($p < 0.05$).

The ACE Inhibitory Activity of Fractions F1–F5

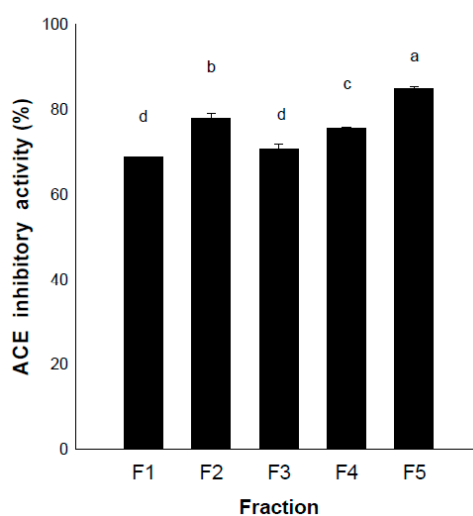


Figure S3. The ACE inhibitory activity of fractions separated by GFC. Different letters above the column indicated the percentage of ACE-inhibitory activity were significantly different ($p < 0.05$).

Sequence Profile of the Peptides VGQLGGAAGGAF

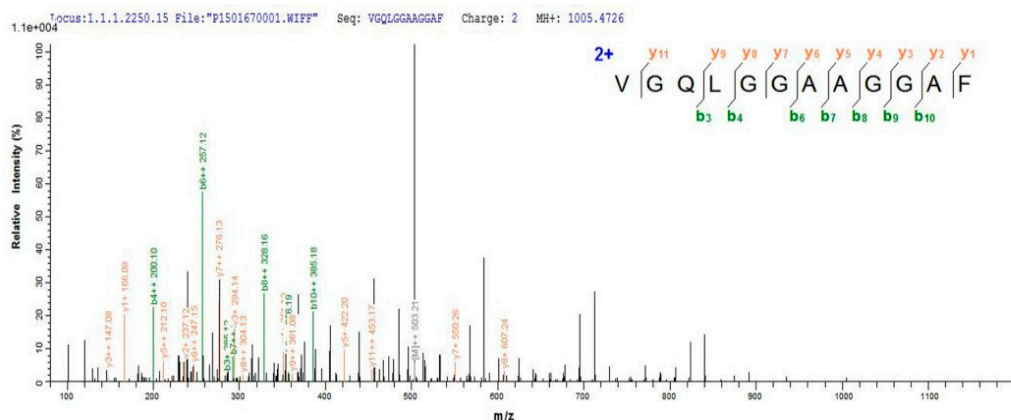


Figure S4. The ESI-MS/MS spectrum of VGQLGGAAGGAF.

The ACE Inhibitory Activity of Fractions F5-1–F5-9

Table S1. ACE inhibition rate of sub-fractions separated by RP-HPLC.

Fractions	ACE Inhibitory Rate (%)
F5-1	42.14 ± 0.48 ^c
F5-2	50.42 ± 1.81 ^b
F5-3	60.06 ± 0.72 ^a
F5-4	3.39 ± 2.07 ^g
F5-5	31.22 ± 0.71 ^d
F5-6	30.18 ± 2.01 ^d
F5-7	14.91 ± 2.73 ^e
F5-8	41.10 ± 1.26 ^c
F5-9	9.61 ± 3.21 ^f

The final sample concentration was 0.01 mg·mL⁻¹. The data were expressed as mean ± standard deviation ($n = 3$). Different letters (the superscript words a–g) indicated above the percentage of ACE inhibitory activity were significantly different ($p < 0.05$).