

**The plasminogen binding protein PbsP is required
for brain invasion by hypervirulent CC17 Group B streptococci**

Germana Lentini^{1*}, Angelina Midiri^{1*}, Arnaud Firon², Roberta Galbo³,
Giuseppe Mancuso¹, Carmelo Biondo¹, Emanuela Mazzon⁴, Annamaria Passantino⁵, Letizia
Romeo⁴, Patrick Trieu-Cuot², Giuseppe Teti^{1,6§} and Concetta Beninati^{1,7}

¹*Metchnikoff Laboratory, Departments of Human Pathology and Medicine, University of Messina, Messina, Italy;* ²*Institut Pasteur, Unité de Biologie des Bactéries Pathogènes à Gram Positif, CNRS ERL3526, 75015 Paris, France;* ³*Department of Chemical, Biological, Pharmaceutical and Environmental Sciences, University of Messina, Messina, Italy;* ⁴*IRCCS Centro Neurolesi Bonino Pulejo, Messina;* ⁵*Department of Veterinary Sciences, University of Messina, Messina, Italy;* ⁶*Charybdis Vaccines Srl, Messina, Italy;* ⁷*Scylla Biotech Srl, Messina, Italy*

Figure-S1 (Teti)

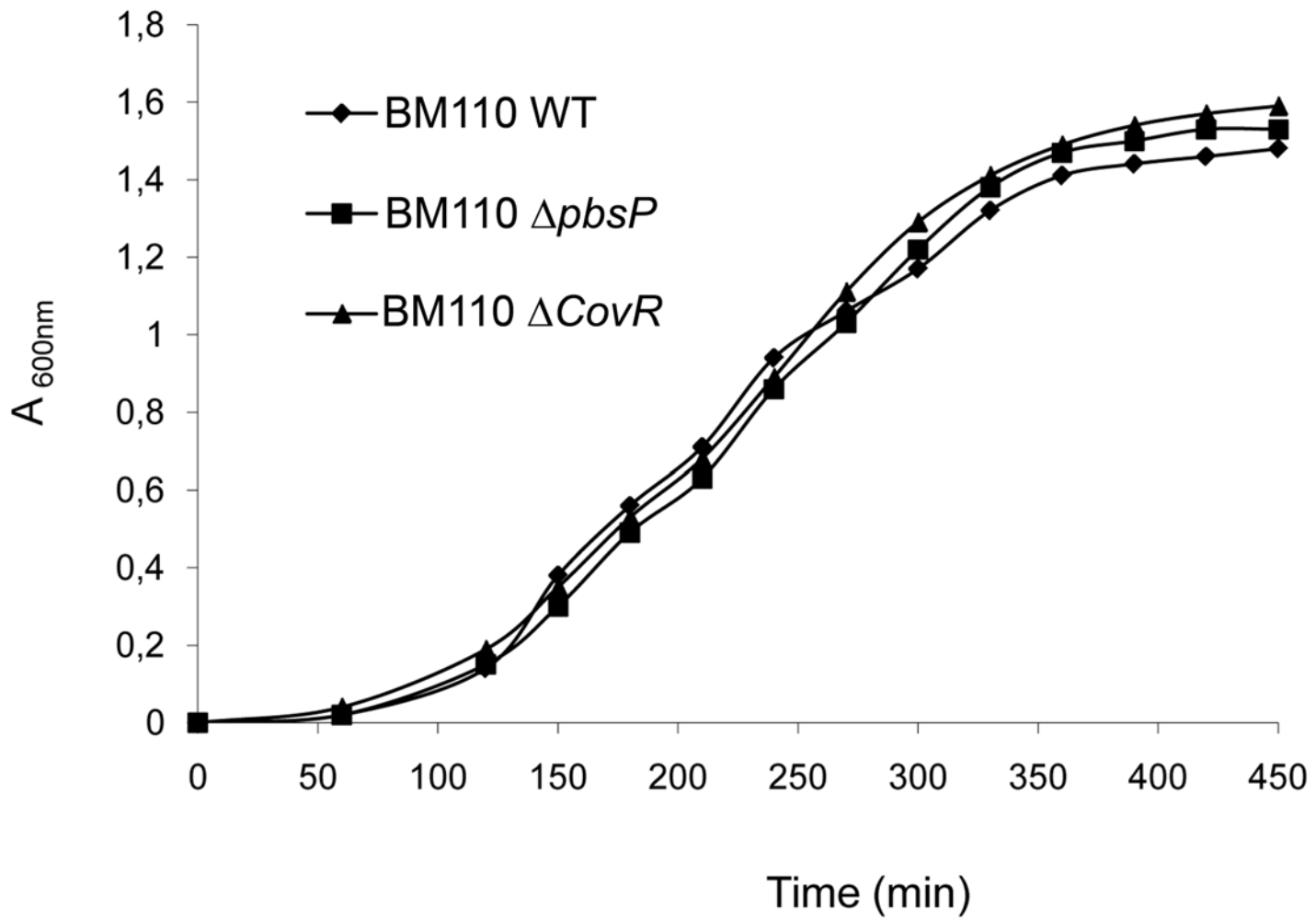
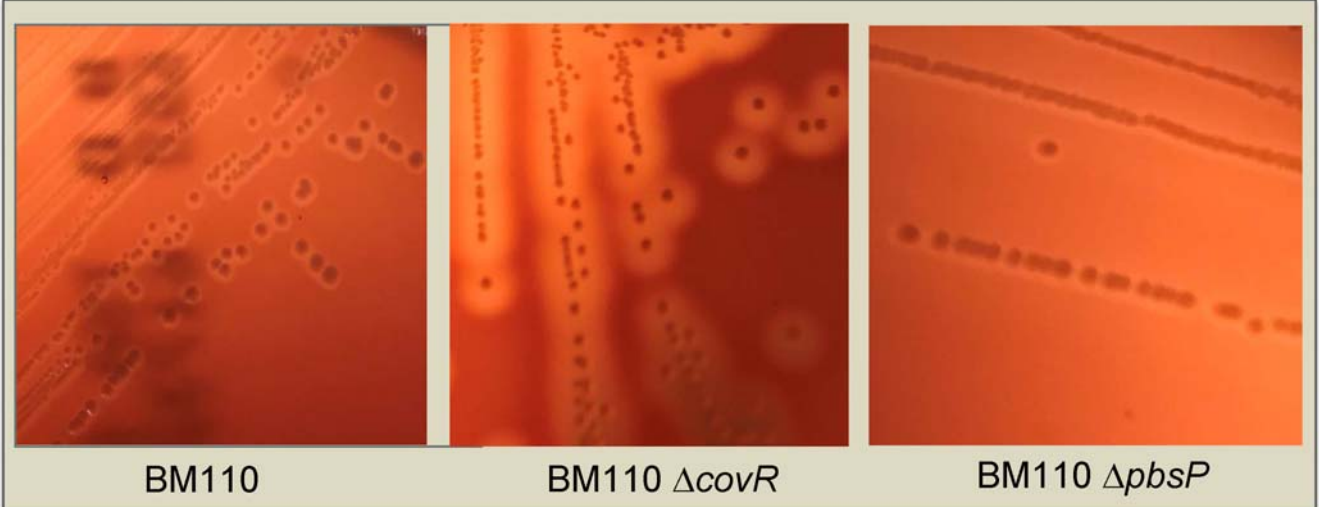


Fig. S2 (Teti)

A



B

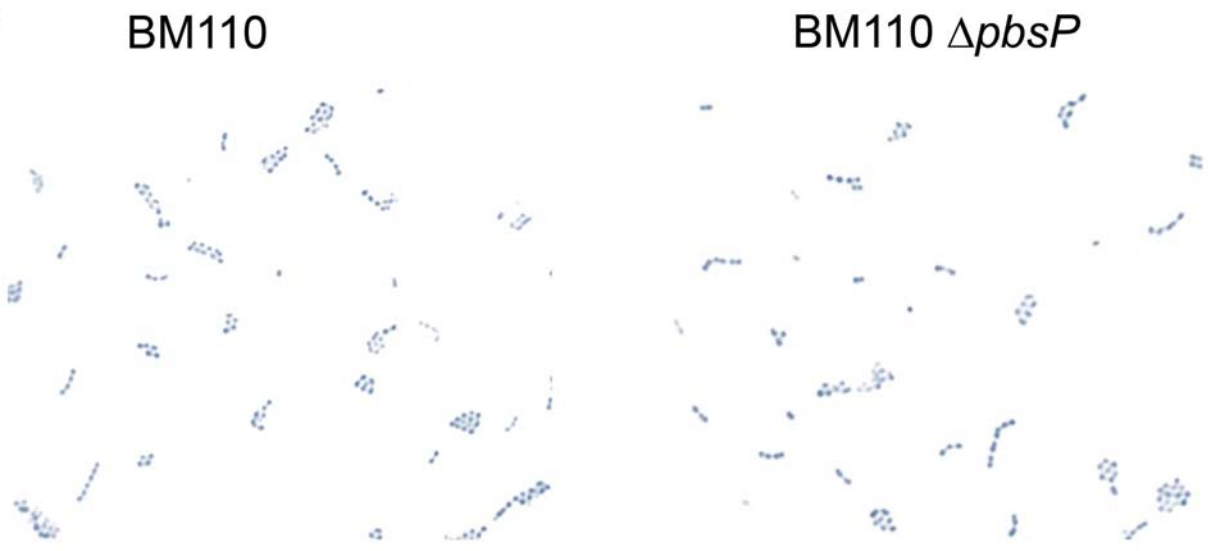


Fig. S3 (Teti)

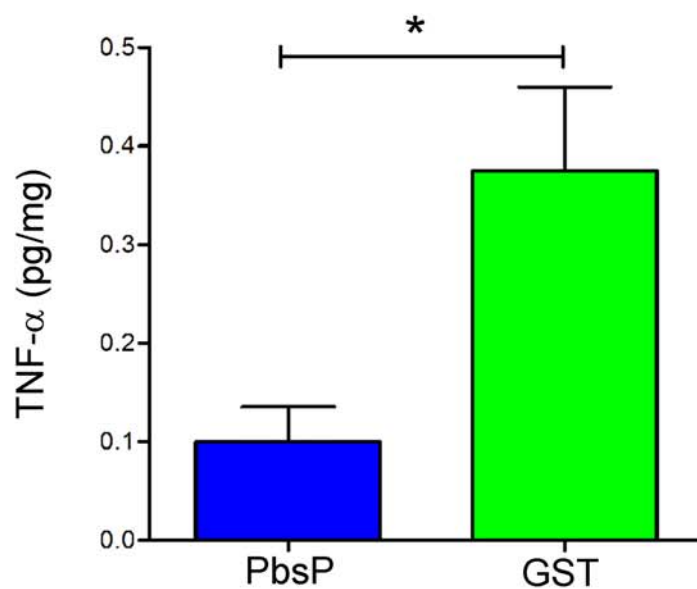
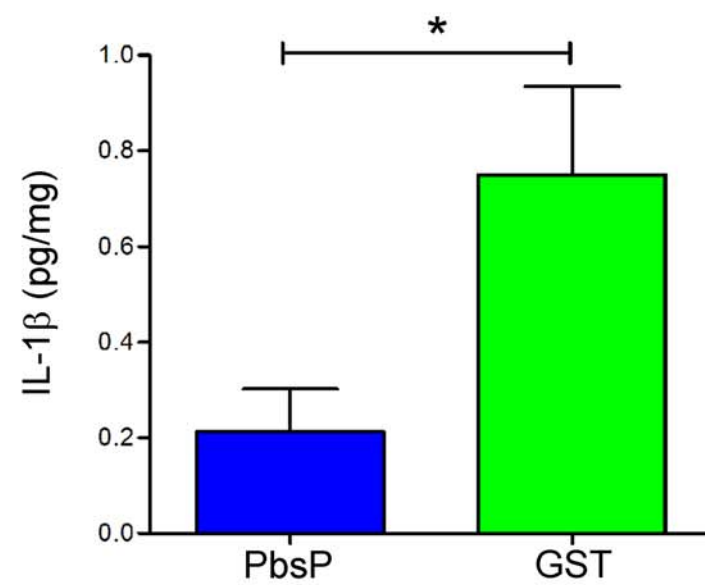
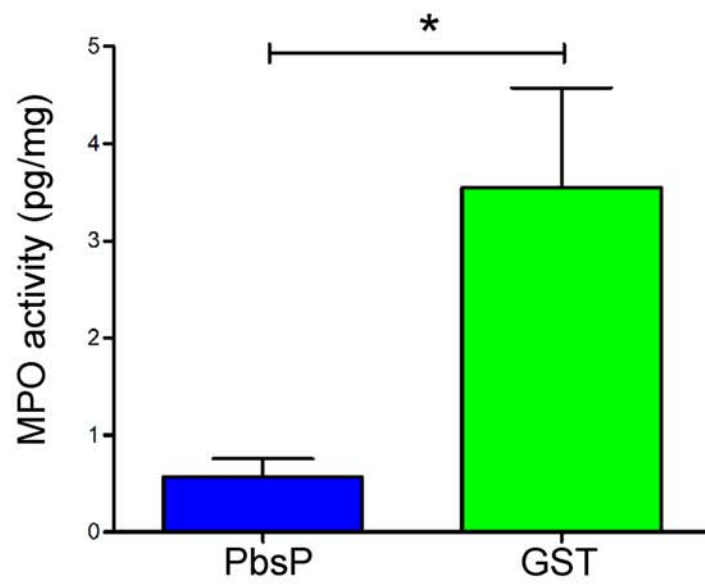


Figure-S4 (Teti)

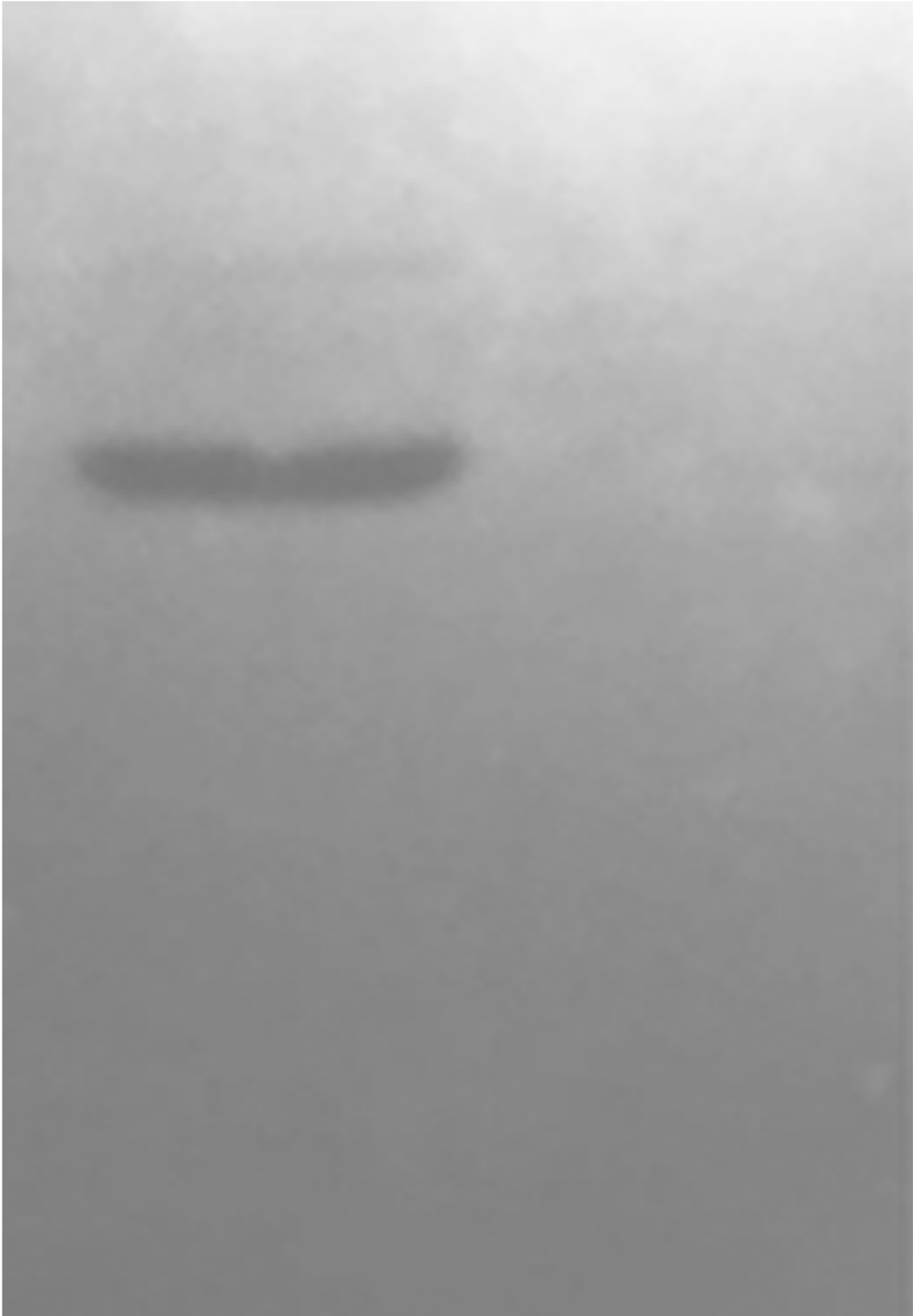


Figure S1. Growth in Todd-Hewitt broth of GBS BM110 mutants.

Growth curves of BM110 (WT, diamonds), *pbsP* deletion mutant (BM110 Δ *pbsP*, squares) and *CovR* deletion mutant (BM110 Δ *CovR*, triangles) GBS strains in Todd-Hewitt broth.

Fig. S2. Colony morphology and microscopic appearance of GBS BM110 mutants.

(A) Colony morphology of wild-type BM110 strain (BM110) and its *CovR* or *pbsP* deletion mutants (BM110 Δ *CovR* or BM110 Δ *pbsP*, respectively) on blood agar. (B) Cell morphology after Gram stain of wild-type BM110 strain (BM110) and its *pbsP* deletion mutant (BM110 Δ *pbsP*).

Fig. S3. PbsP-based immunization prevents GBS-induced encephalitis. MPO, IL-1 β and TNF- α protein levels were measured in organ homogenates from mice immunized with recombinant PbsP fused to glutathione-S-transferase (GST-PbsP) or with GST as a control. Data are expressed as means \pm standard deviations of three duplicate observations, each conducted with a different animal, in the course of a single experiment. *, $p < 0.05$ by one way ANOVA.

Figure S4. Image from the same blot shown in Fig 1, obtained with a higher exposure

#

Table S1

RT-PCR primer and probe sequences

pbsp_up	TGATGGTGGCTACCTCTGTTAGAA
pbsp_low	AGTCGTTTTGGTCATCGCTACA
gyr_up	AACTGGGAAGGGATCAATTGTCT
gyr_low	CTTCCCATTGGAAGTTGTTTCAA
FAM-pbsp_probe	ATGGCAACGCCGACAC
VIC-gyr_probe	ACGTTCACGGACTGAA