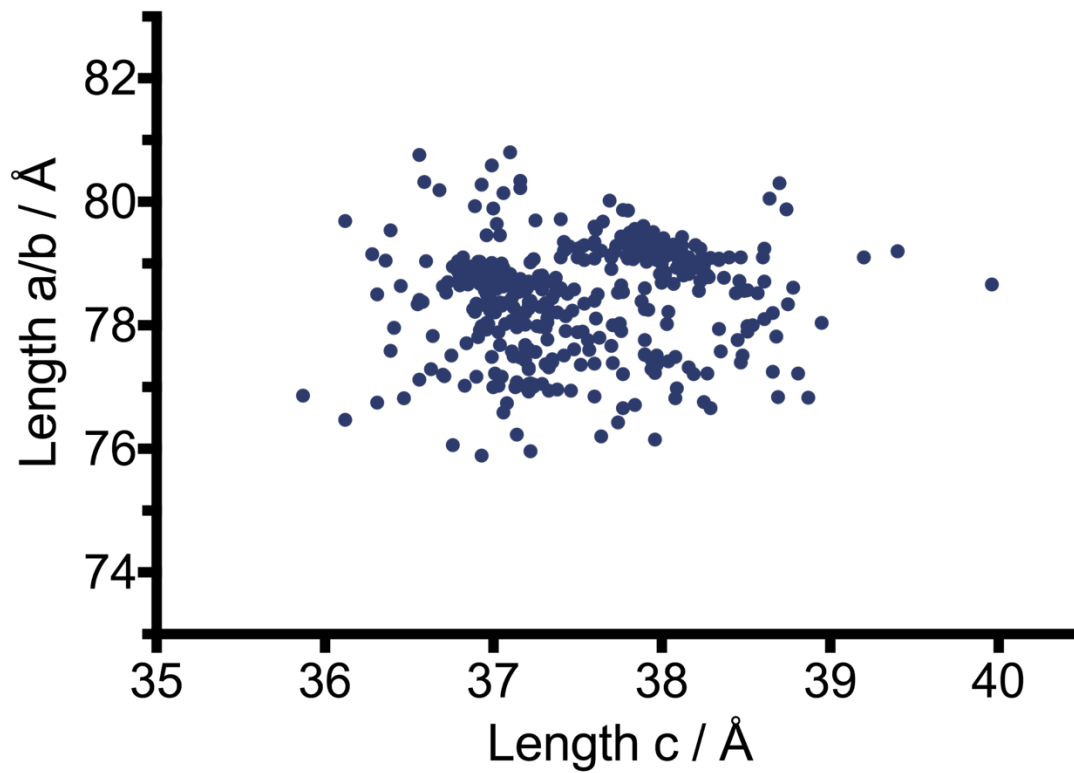


## **Machining protein microcrystals for structure determination by electron diffraction**

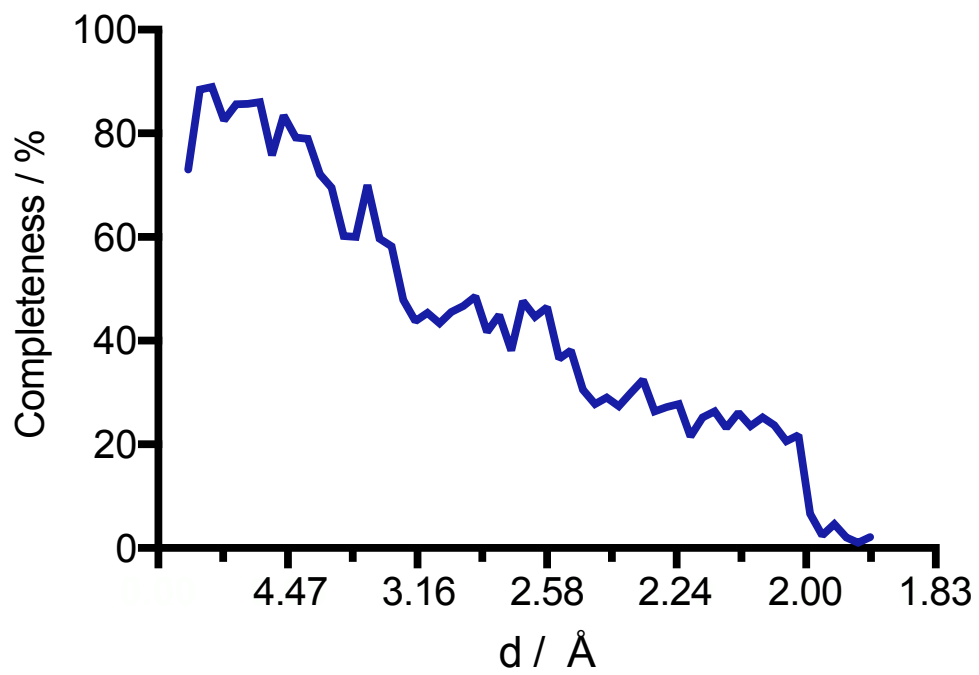
Helen M.E. Duyvesteyn, Abhay Kotecha, Helen M. Ginn, Corey W. Hecksel, Emma V. Beale, Felix de Haas, Gwyndaf Evans, Peijun Zheng, Wah Chiu, David I. Stuart

### **Supplementary Information**

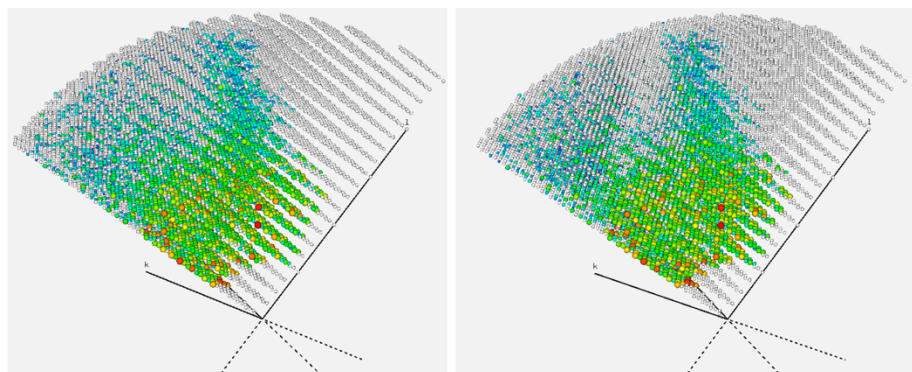
SI Appendix, Fig. S1. Variation in tetragonal hen egg white lysozyme unit cell spacings (a, b and c) reported in the PDB. Note that the two distinct clusters represent data collected at 100 K (left) and 298 K (right).



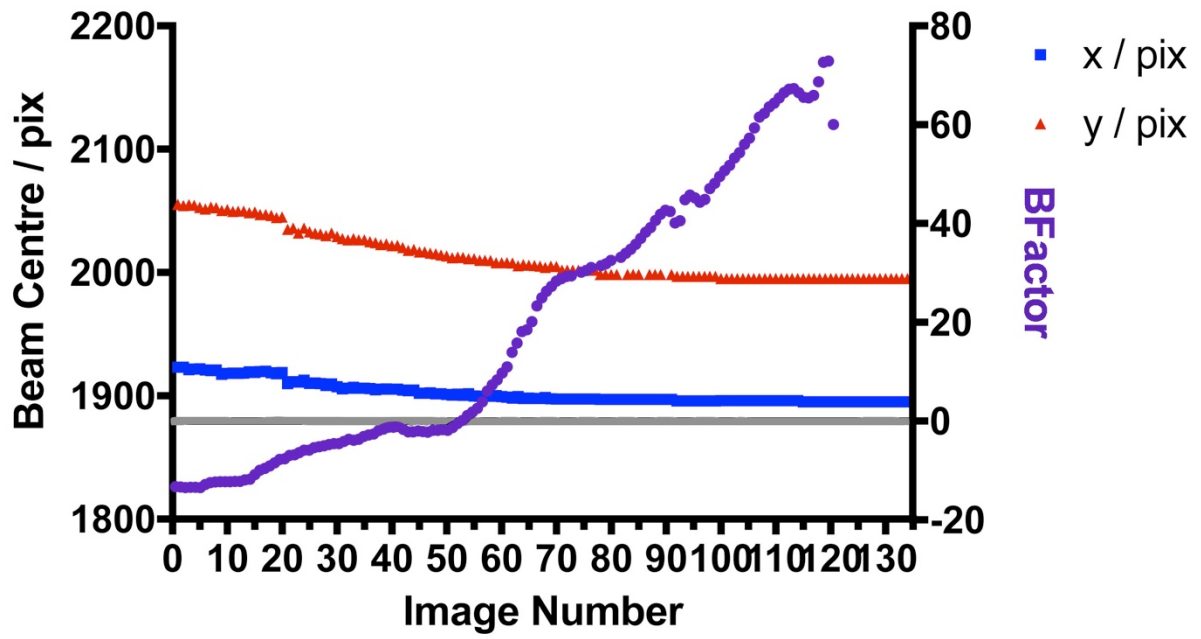
SI Appendix, Fig. S2. Data completeness



**SI Appendix, Fig. S3. Stereo diagram of data completeness. Measured reflections are coloured according to amplitudes from red (high) to blue (low).**



SI Appendix, Fig. S4. Shift in beam position and increase in effective B factor during data collection.



**SI Appendix, Supplementary Video 1. Electron diffraction patterns of milled lysosome crystal across entire tilt series. All 134 patterns collected are displayed in sequence from the first to the last. The full area of the detector is shown.**