

**Figure S-4** HSQC NMR spectra of fungal-treated wheat straw. *Cs12* (a,b), *Pe3* (c,d), *Pe6* (e,f) *Le8* (g, h) *Le10* (i,j). a,c,e,g,i: aliphatic ( $\delta_C/\delta_H$  50-90/2.5-6.0) region, b,d,f,h,j: aromatic/unsaturated ( $\delta_C/\delta_H$  90-160/6.0-8.0) region. Structures of annotated correlation peaks are presented in Figure 5.  $G_{mod}$  and  $S_{mod}$  are presented in a lighter colour of G and S, respectively. Carbohydrate and unassigned signals are presented in gray. u: unassigned signal overlapping  $A_\alpha/A'_\alpha$ .

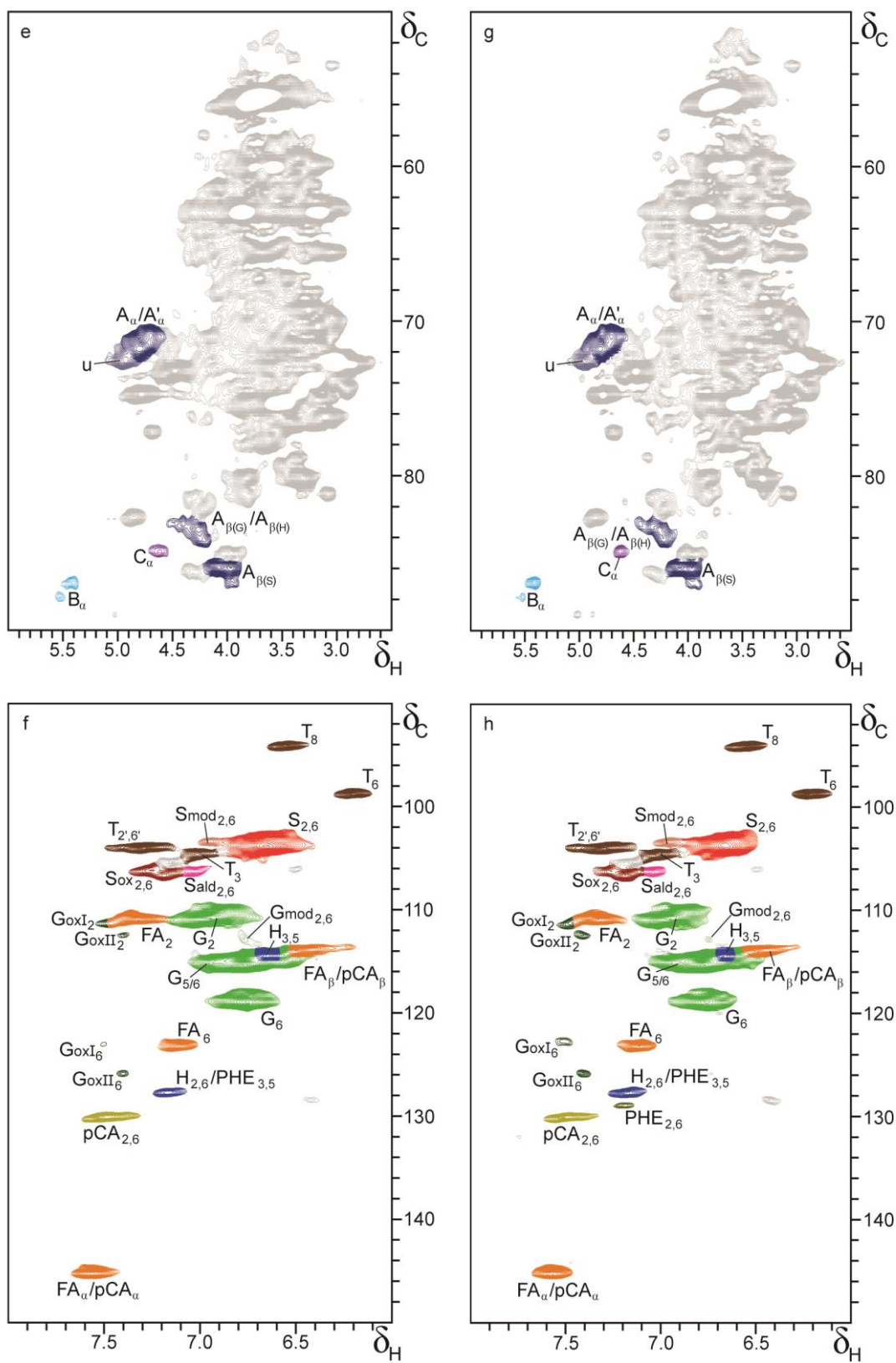


Figure S-4 (continued)

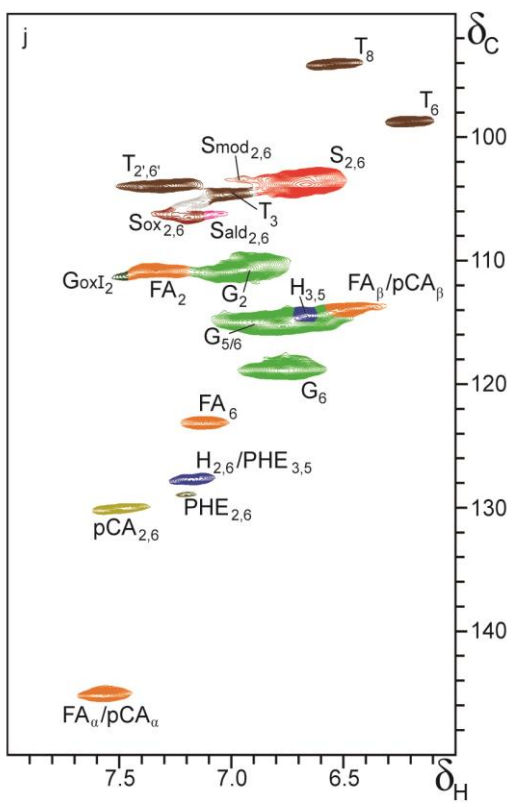
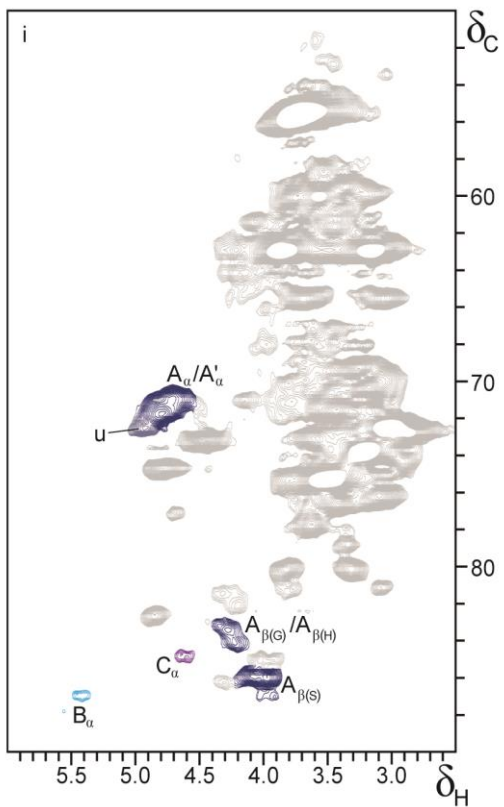


Figure S-4 (continued)