

**Paraoxonase 1 knockout rats have impaired T cell development at the CD4/CD8
double-negative to double-positive transition stage**

**Lin bai¹, Guiying Shi¹, Yuanwu Ma¹, Li Zhang¹, Feifei Guan¹, Xu Zhang¹, Yanfeng Xu¹,
Houzao Chen² and Lianfeng Zhang^{1*}**

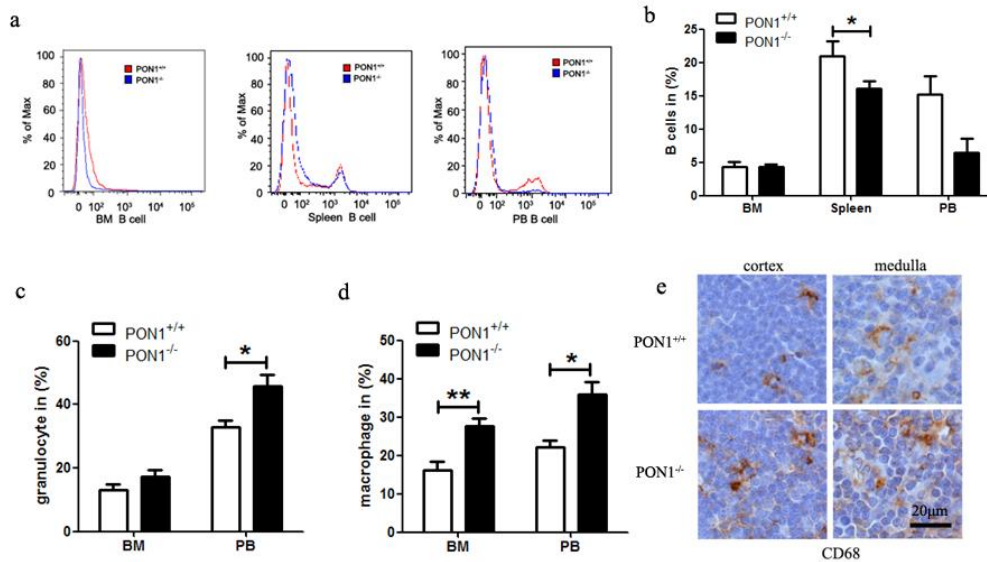


Figure S1. **a** Representative histograms of B cells in the bone marrow (BM), spleen, and peripheral blood (PB) from $PON1^{-/-}$ and $PON1^{+/+}$ rats aged 2 months. **b** Flow cytometric analysis of the percentage of B cells in the BM, spleen, and PB of $PON1^{-/-}$ and $PON1^{+/+}$ rats aged 2 months. **c**, **d** Flow cytometric analysis of the percentages of granulocytes and macrophages in the BM and peripheral PB from $PON1^{-/-}$ and $PON1^{+/+}$ rats aged 2 months. **e** Immunohistochemical analysis of CD68+ cells in the cortex and medulla of the thymus from $PON1^{-/-}$ and $PON1^{+/+}$ rats aged 2 months. Scale bar = 20 μ m. Data represent the mean \pm SD of three independent experiments ($n = 5$ per group). * $P < 0.05$; ** $P < 0.01$.

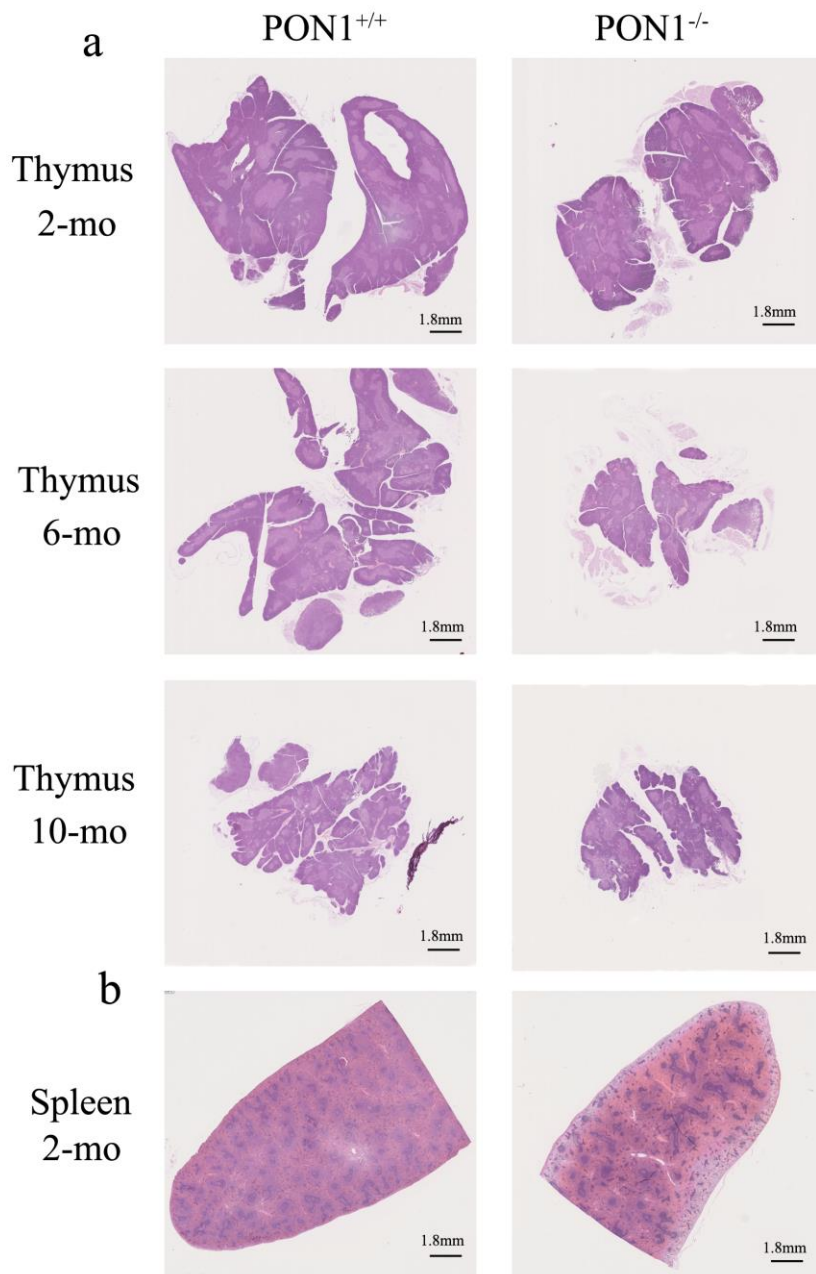


Figure S2. a Histopathological analyses of whole-mounts of thymus sections from PON1^{+/+} and PON1^{-/-} rats aged 2, 6 and 10 months. **b** Histopathological analyses of whole-mounts of spleen sections from PON1^{+/+} and PON1^{-/-} rats aged 2 months. Scale bar = 1.8 mm.