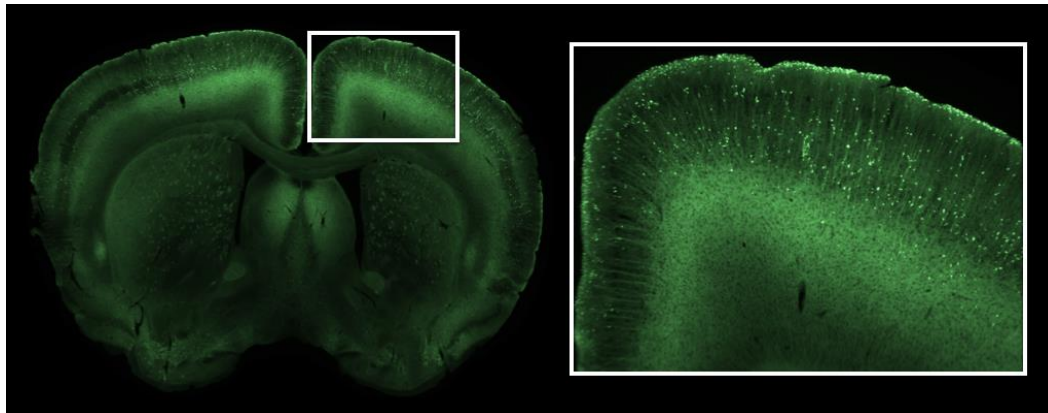
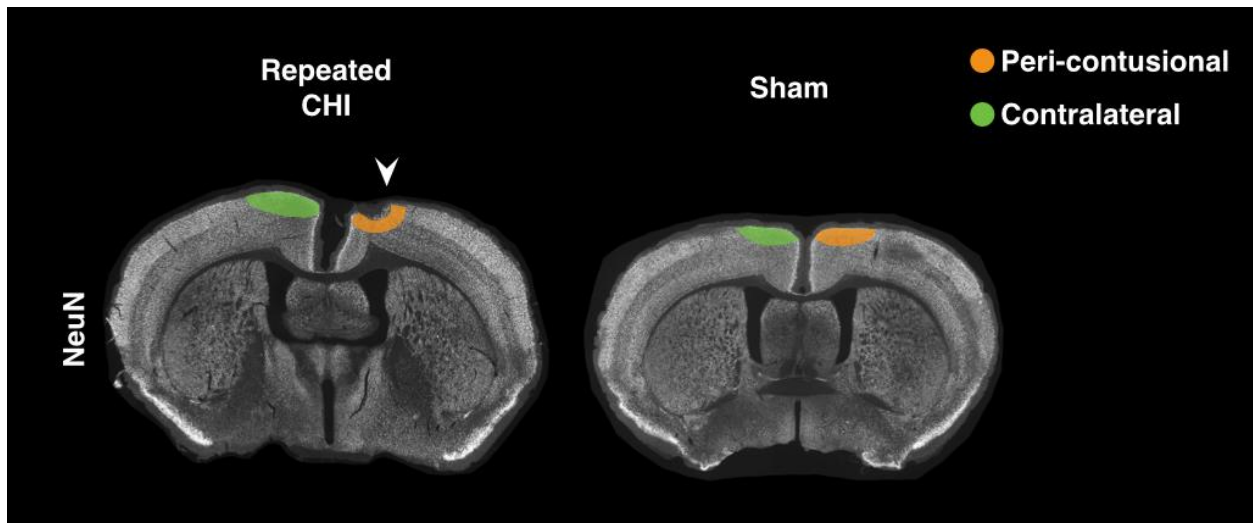


# Neurogliovascular dysfunction in a model of repeated Traumatic Brain Injury

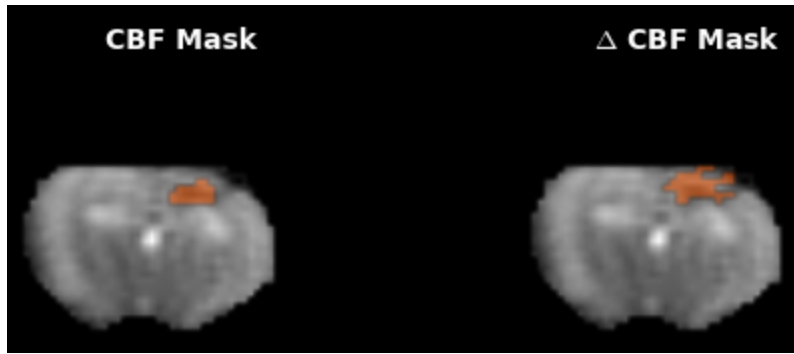
## Supplementary Material:



**Figure S1:** *ChR2-YFP expression in Thy1-ChR2 mouse. (LEFT) Coronal section showing expression of ChR2-YFP, with white rectangle specifying the inset region. (RIGHT) Zoomed-in view of right S1FL expression of ChR2-YFP.*



**Figure S2:** *Examples of IHC ROIs identified on NeuN immunofluorescence: (LEFT) Peri-contusional ROI (orange) and contralateral ROI (green) in a repeated CHI mouse brain section stained for NeuN. These ROIs were used for all stains (NeuN, GFAP, MAP2, Neurofilament). (RIGHT) Similarly for a mouse having undergone sham preparation.*



**Figure S3: Examples of pCASL ROI identification based on logistic regression: (LEFT)** Mask of peri-contusional voxels selected via logistic regression of multi-PLD pCASL data on resting perfusion. **(RIGHT)** Mask of peri-contusional voxels selected via logistic regression of pCASL signal changes in response to hypercapnic challenge.